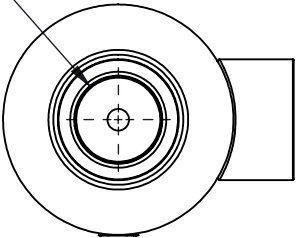


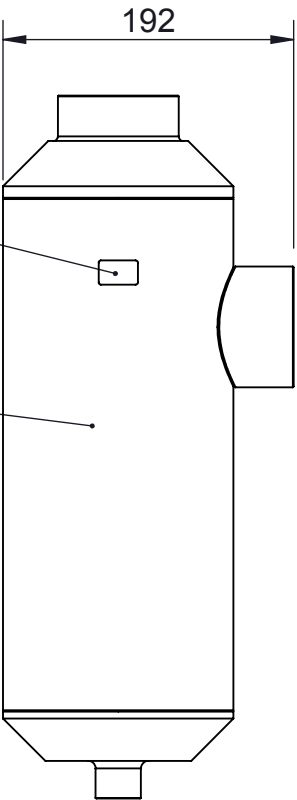
IN9001

2 - 11.5 NPTF  
INLET PORT



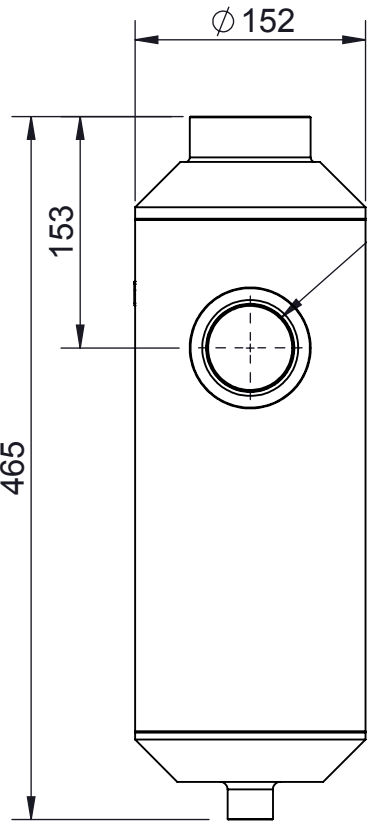
2

1

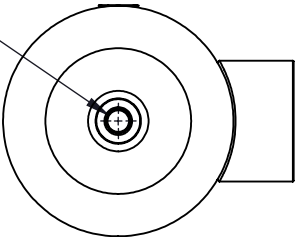


Ø 152

2 - 11.5 NPTF  
OUTLET PORT



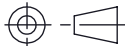

3/8 - 18 NPTF  
DRAIN PORT



NOTE: INSTALL LABEL (ITEM 2 ) AS SHOWN

REV.	ECN	DESCRIPTION	DATE	BY
1	C	ADDED C06 PRODUCT LABEL TO BOM	12/6/2012	J.D.H
2	F	CHANGED PROOF PRESSURE SPEC	5/27/2014	J.D.H
3	H	UPDATE DRAWING TEMPLATE	8/31/2018	BB

SPECIFICATIONS	
MAXIMUM WORKING PRESSURE	1.0 MPa (150 psig)
PROOF PRESSURE	1.56 MPa (227 psig)
MATERIAL	PLAIN CARBON STEEL

2	FAPP-T20-C06-DUP01537	PRODUCT LABEL	1
1	FAPP-T20-A01-DUP01537	2 NPTF DRIP LEG ASSEMBLY	1
ITEM NO	PART NUMBER	DESCRIPTION	QTY
UNITS mm		SCALE FREE	 <b>SMC. SMC Corporation of America</b> <small>THIS DRAWING CONTAINS CONFIDENTIAL INFORMATION PROPRIETARY TO SMC CORPORATION OF AMERICA. IT MUST NOT BE REPRODUCED OR DISCLOSED TO OTHERS OR USED IN ANY OTHER WAY, IN PART OR IN WHOLE, EXCEPT AS AUTHORIZED IN WRITING BY SMC CORPORATION OF AMERICA.</small>
DRAWN BY D. SHULER		DATE 7/13/2011	
APPROVED BY		DESCRIPTION	
REFER TO EDM SYSTEM		2 NPTF DRIP LEG	
PRINTED DOCUMENTS ARE UNCONTROLLED REFER TO EDM SYSTEM FOR CONTROLLED DOCUMENT			
CAD FILE FAPP-T20-DUP01537		SIZE B	DRAWING/PART No.  FAPP-T20-DUP01537
		SHEET 1 OF 1	REVISION <div>3</div>

REFERENCE NUMBER: US95229