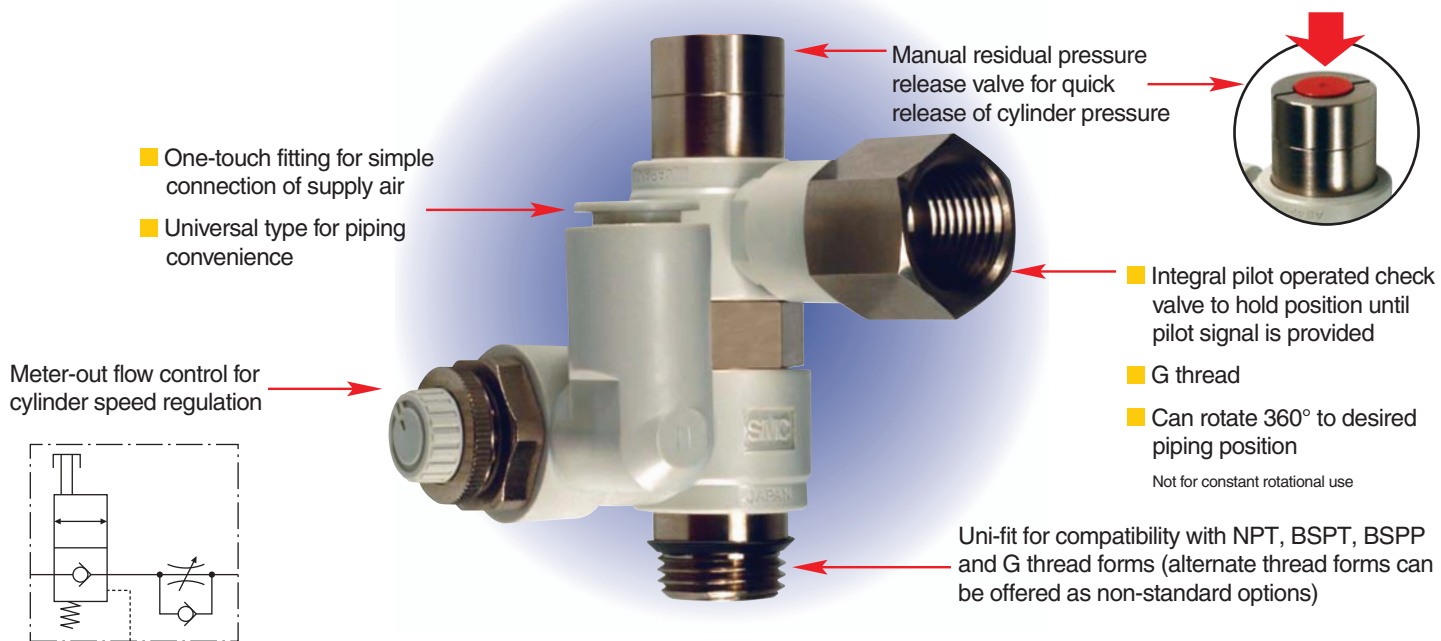
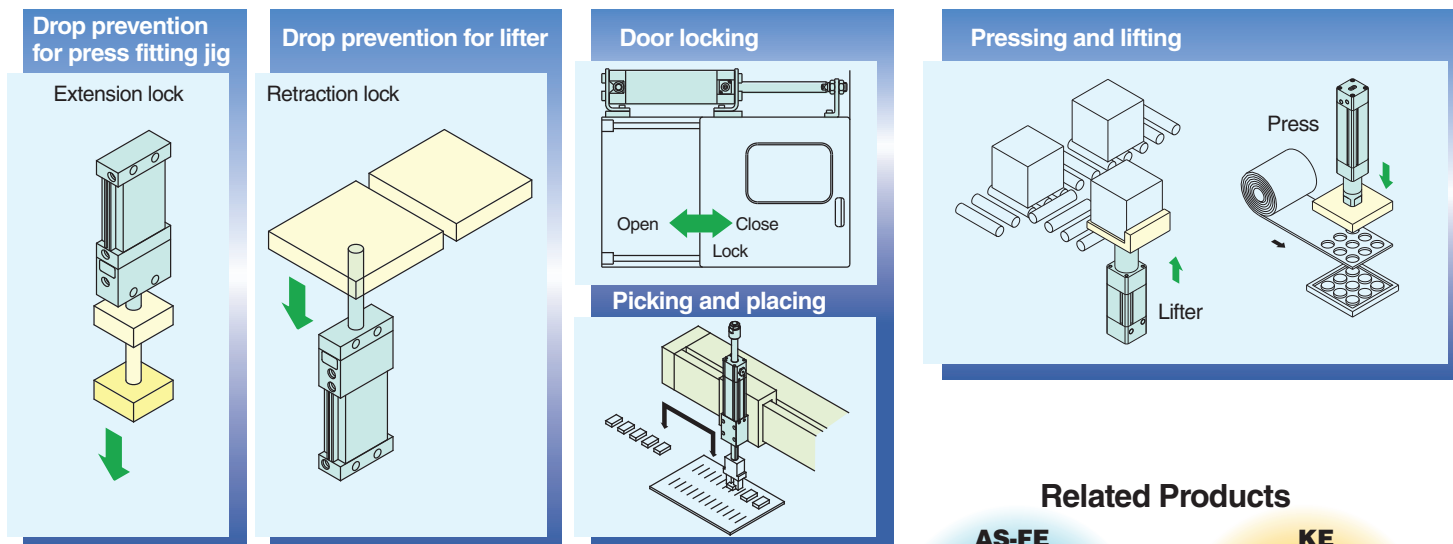




## ASP-X352 Speed Control Valve with Manual Override Pilot Operated Check Valve



### APPLICATIONS



### Specifications

|                                      |                                     |
|--------------------------------------|-------------------------------------|
| Fluid                                | Air                                 |
| Proof pressure                       | 217.5 psi (1.5MPa)                  |
| Operating pressure range             | 14.5 to 145psi (0.1 to 1 MPa)       |
| Pilot check valve operating pressure | More than 50% of operating pressure |
| Number of needle rotations           | 10 turns                            |
| Applicable tubing material           | Nylon, Soft nylon, Polyurethane     |

### Related Products



Flow control  
w/residual pressure relief

Residual pressure relief Valve

## How to Order

**AS P 3 3 0 F — U 01 — 07 — X352**

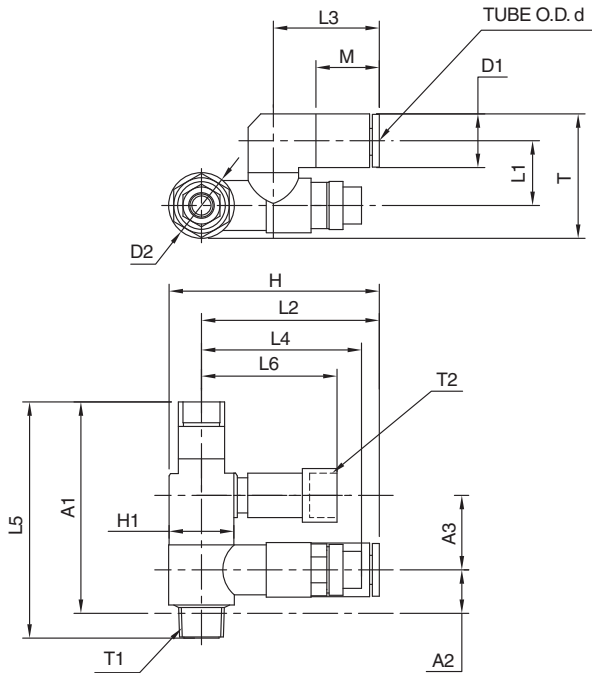
- Flow control**
- With pilot check valve**
- Body size**

|   |     |
|---|-----|
| 3 | 1/8 |
| 4 | 1/4 |
| 5 | 3/8 |
| 6 | 1/2 |
- Universal type**
- With One-touch fitting**
- Uni-fit thread form**
- With residual pressure relief valve (manual), G thread pilot port**
- Applicable tubing O.D.**

| Metric size |       | Inch size |        |
|-------------|-------|-----------|--------|
| 06          | ø6mm  | 07        | ø1/4"  |
| 08          | ø8mm  | 09        | ø5/16" |
| 10          | ø10mm | 11        | ø3/8"  |
| 12          | ø12mm | 13        | ø1/2"  |
- Thread size**

|    |     |
|----|-----|
| 01 | 1/8 |
| 02 | 1/4 |
| 03 | 3/8 |
| 04 | 1/2 |

## Dimensions



## Models

| Model number       | Piping thread | Pilot port | Applicable tubing O.D. |            |     |     |           |       |       |
|--------------------|---------------|------------|------------------------|------------|-----|-----|-----------|-------|-------|
|                    |               |            | Metric size            |            |     |     | Inch size |       |       |
|                    |               |            | ø6                     | ø8 (5/16") | ø10 | ø12 | ø1/4"     | ø3/8" | ø1/2" |
| ASP330F-U01-□-X352 | 1/8" Uni-fit  | G 1/8"     | ●                      |            |     |     | ●         |       |       |
| ASP430F-U02-□-X352 | 1/4" Uni-fit  | G 1/4"     |                        | ●          |     |     | ●         |       |       |
| ASP530F-U03-□-X352 | 3/8" Uni-fit  | G 3/8"     |                        |            | ●   |     |           | ●     |       |
| ASP630F-U04-□-X352 | 1/2" Uni-fit  | G 1/2"     |                        |            |     | ●   |           |       | ●     |

Note) Additional models are possible (i.e. thread form/tubing size combinations), please contact your SMC representative for availability.



| Model number        | Applicable tubing diameter ød | A1   | A2   | A3   | D1    | D2    | H    | H1 | L1   | L2   | L3   | L4           | L5   | L6   | M    | T    | T1       | T2     |
|---------------------|-------------------------------|------|------|------|-------|-------|------|----|------|------|------|--------------|------|------|------|------|----------|--------|
| ASP330F-U01-06-X352 | 6mm                           | 45.7 | 9.4  | 16.1 | ø11.6 | ø14.2 | 45.5 | 14 | 14   | 38.4 | 22.9 | 34.6 to 39.6 | 51.1 | 29.3 | 13.7 | 26.9 | 1/8" Uni | G 1/8" |
| ASP330F-U01-07-X352 | 1/4"                          |      |      |      |       |       |      |    |      |      |      |              |      |      |      |      |          |        |
| ASP430F-U02-07-X352 | 1/4"                          | 63.6 | 10.4 | 23   | ø15.2 | ø18.5 | 58   | 21 | 17.9 | 46.4 | 28.2 | 36.7 to 41.7 | 70.4 | 41.7 | 18.7 | 34.7 | 1/4" Uni | G 1/4" |
| ASP430F-U02-08-X352 | 8mm (5/16")                   |      |      |      |       |       |      |    |      |      |      |              |      |      |      |      |          |        |
| ASP530F-U03-10-X352 | 10mm                          | 70.5 | 13.2 | 25   | ø18.5 | ø23   | 66.1 | 24 | 23.1 | 54.1 | 32.6 | 41.9 to 46.9 | 77.9 | 44   | 20.8 | 43.9 | 3/8" Uni | G 3/8" |
| ASP530F-U03-11-X352 | 3/8"                          |      |      |      |       |       |      |    |      |      |      |              |      |      |      |      |          |        |
| ASP630F-U04-12-X352 | 12mm                          | 79.4 | 18.7 | 29.8 | ø20.9 | ø28.6 | 80.3 | 24 | 25.9 | 66   | 34.3 | 57.3 to 64.8 | 87.5 | 52.2 | 21.8 | 50.7 | 1/2" Uni | G 1/2" |
| ASP630F-U04-13-X352 | 1/2"                          |      |      |      |       |       |      |    |      |      |      |              |      |      |      |      |          |        |



**SMC Corporation of America**  
 10100 SMC Boulevard, Noblesville, Indiana  
 46060, U.S.A.  
 Phone: 317-762-7621 Fax: 317-899-3102  
[www.smcusa.com](http://www.smcusa.com)

**SMC Pneumatics (Canada) Ltd.**  
 2715 Bristol Circle, Oakville, Ontario  
 L6H 6X5 Canada  
 Phone: 800-762-7621 Fax: 905-812-8686  
[www.smcpcanada.com](http://www.smcpcanada.com)