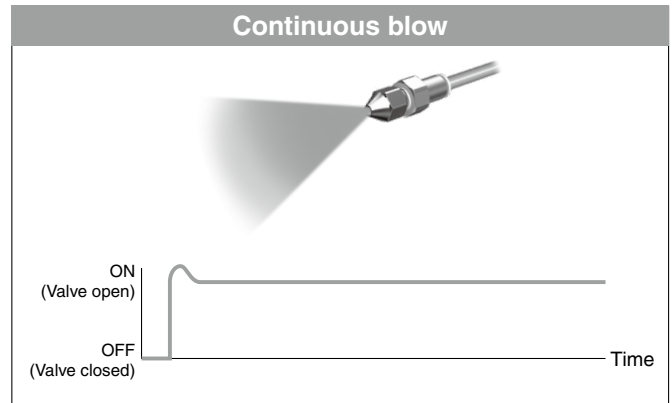
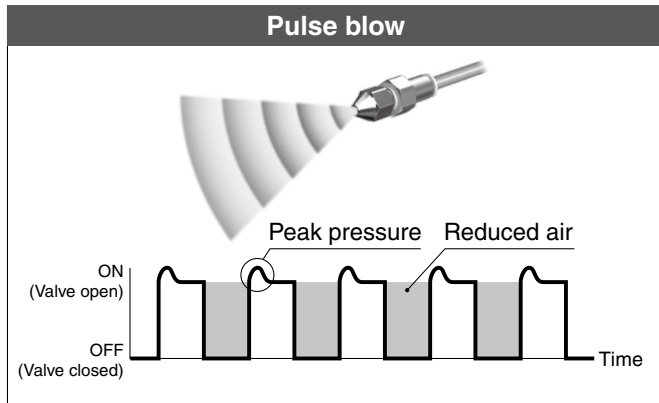


Pulse Blow Valve

RoHS

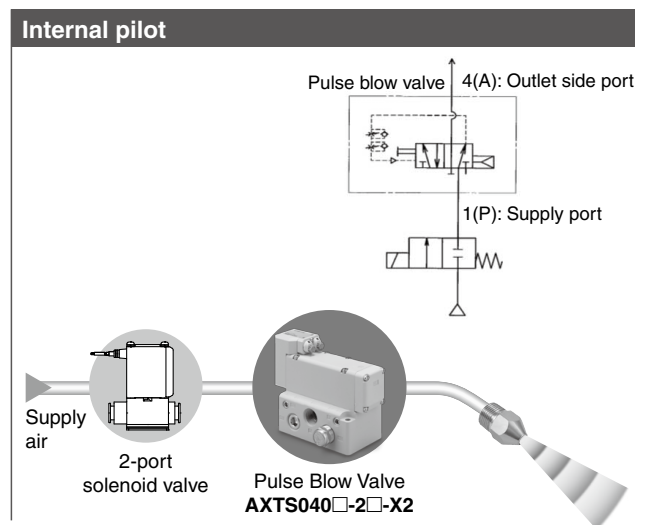
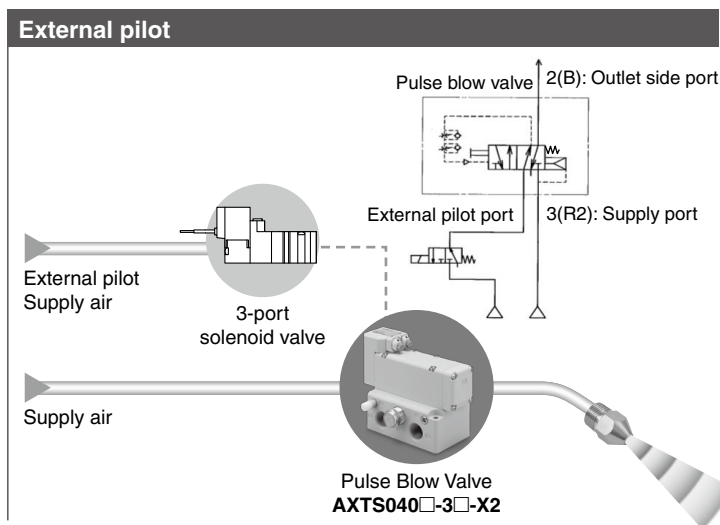
The peak pressure of repeatedly colliding air permits efficient blowing.

■ Air consumption: Reduced by 50% or more



■ Control for pulse generation is not required.

Pulse blow can be used by simply supplying air.



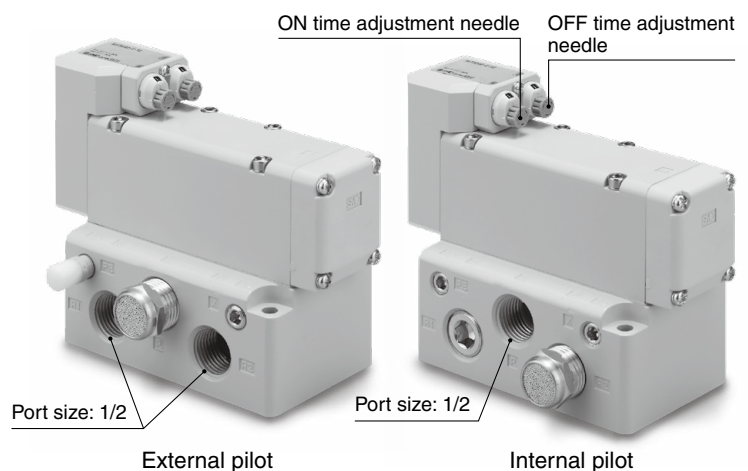
■ Long service life
(200 million cycles or more)

■ Flow rate characteristics

Type of actuation	C [dm ³ /(s·bar)]	b	Cv
External pilot	14	0.18	3.4
Internal pilot	12	0.14	2.9

■ ON/OFF time adjustable individually

■ Operating pressure range:
0.2 to 1.0 MPa



AXTS040□-□□-X2

20-E751

AXTS040□-□□-***X2***

How to Order

AXTS 040 - 3 -X2

Body size

040	1/2
-----	-----

Thread type

Nil	Rc
F	G
N	NPT
T	NPTF

- **Direct manual override**

Nil	None
B	Locking type

- Type of actuation

2	Internal pilot
3	External pilot

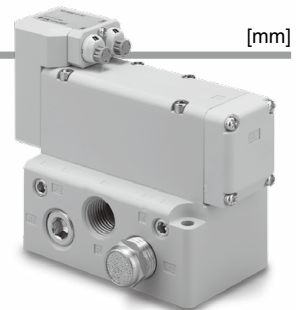
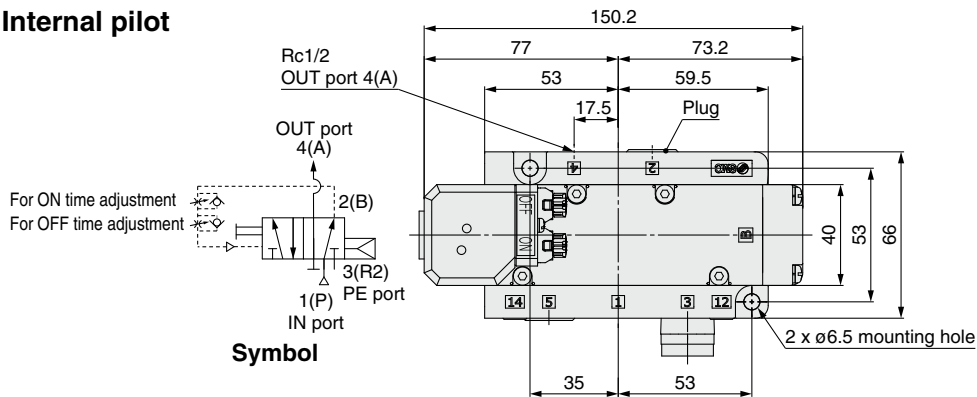
Specifications

Model		AXTS040□-2□-X2	AXTS040□-3□-X2
Type of actuation		Internal pilot	External pilot
Valve construction		Metal seal	
Fluid		Air	
Operating pressure range		0.2 to 1.0 MPa	0 to 1.0 MPa
External pilot air pressure		—	0.2 to 1.0 MPa*1
Frequency adjustment range		1 to 5 Hz	1 to 8 Hz
Proof pressure		1.5 MPa	
Ambient and fluid temperatures		-10 to 50°C	
Lubrication		Not required	
Flow rate characteristics (IN port → OUT port)	C [dm³/(s·bar)]	12	14
	b	0.14	0.18
	Cv	2.9	3.4

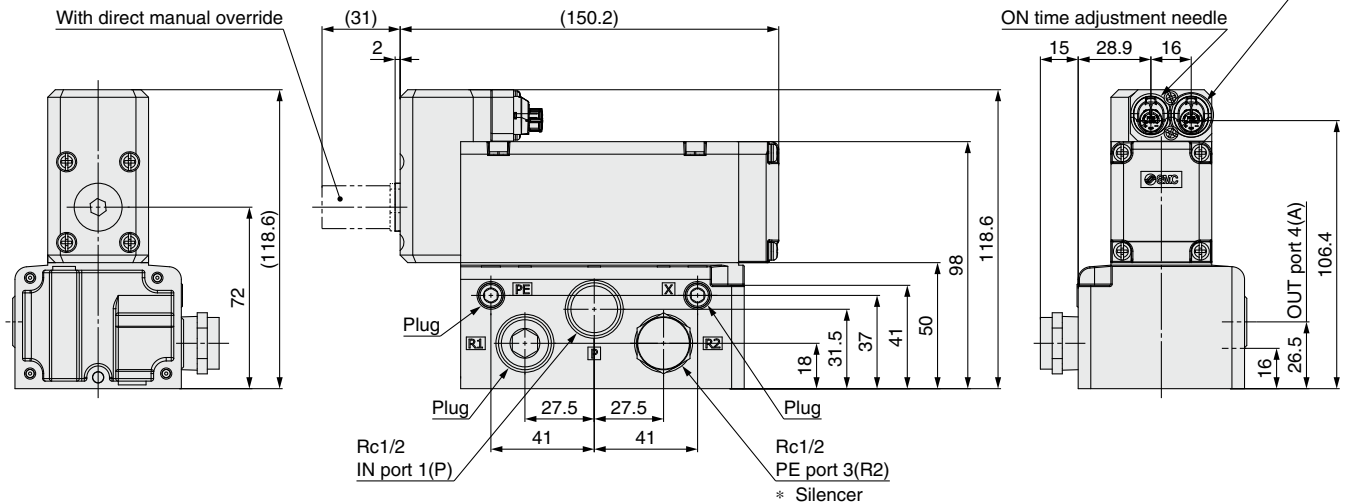
*1 Set the external pilot pressure higher than the operating pressure.

Dimensions

Internal pilot



[mm]



Dimensions

External pilot

