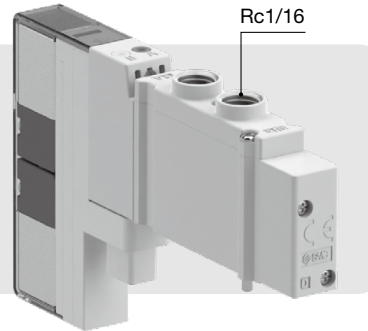


Plug-in Top Ported

Compact 5-Port Solenoid Valve

A top-ported type has been added to the JSY3000 series.



Installed image 4(A) and 2(B) port output pressure detection is possible.

Compact 5-port solenoid valve
JSY3□□00-5□□

[Web Catalog](#)

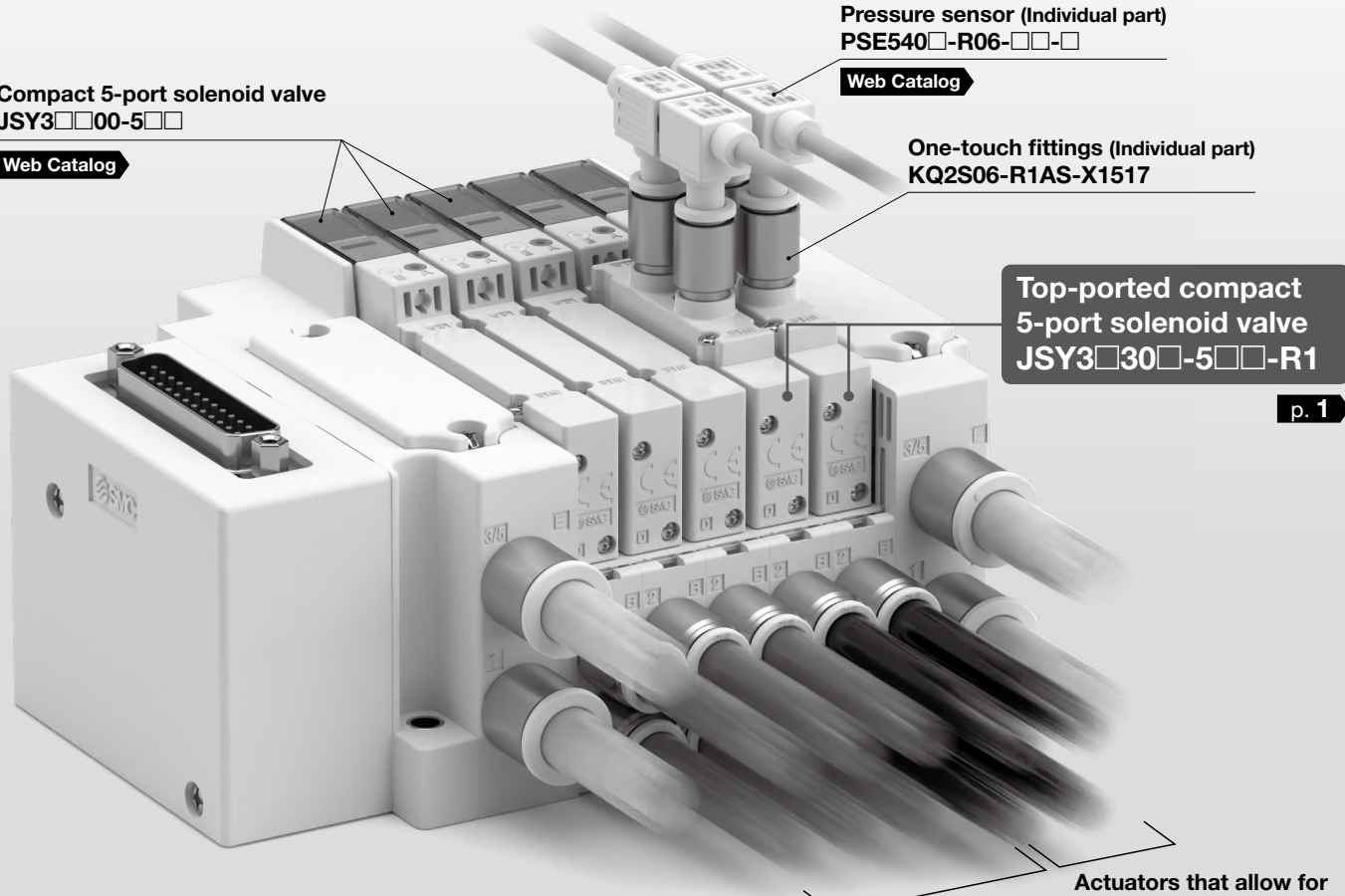
Pressure sensor (Individual part)
PSE540□-R06-□□-□

[Web Catalog](#)

One-touch fittings (Individual part)
KQ2S06-R1AS-X1517

Top-ported compact
5-port solenoid valve
JSY3□30□-5□□-R1

[p. 1](#)



Actuators for general driving

Actuators that allow for pressure visualization

Caution
The mounting bases are side ported.

JSY3000 Series



23-E795

Plug-in Top Ported JSY3000 Series

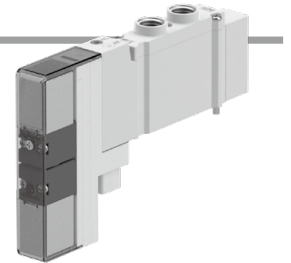


How to Order Valves

Top Ported JSY 3 1 30 □ - 5 U □ - R1

① ② ③ ④ ⑤ ⑥ ⑦ ⑧

Top ported ●



① Series

3	JSY3000
---	---------

② Type of actuation

1	2-position single
2	2-position double
3	3-position closed center
4	3-position exhaust center
5	3-position pressure center
A	Dual 3-port (N.C./N.C.)
B	Dual 3-port (N.O./N.O.)
C	Dual 3-port (N.C./N.O.)

③ Body option

0	Pilot valve exhaust method
---	----------------------------

④ Coil type

Nil	None
T	With power-saving circuit

⑤ Rated voltage

5	24 VDC
---	--------

⑥ Light/surge voltage suppressor and common specification

Symbol	Specifications
U	With light /surge voltage suppressor (Non-polar)
Z	With light /surge voltage suppressor (Positive common)
NZ	With light /surge voltage suppressor (Negative common)

⑦ Manual override

Nil	Non-locking push type
D	Push-turn locking slotted type
E	Push-turn locking lever type

⑧ 4(A)/2(B) port size Thread piping

R1	Rc1/16
----	--------

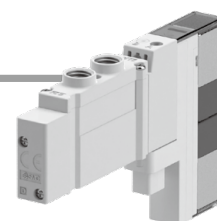
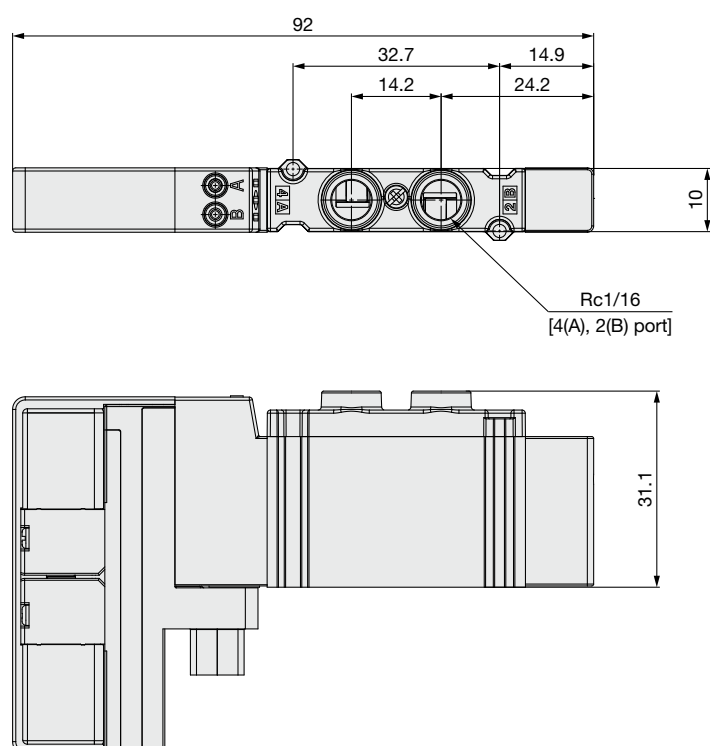
* When ordering a valve individually, the base gasket is not included.
The base gaskets are attached to the manifold.


Valve Specifications

Valve type		Rubber seal
Fluid		Air
Internal pilot operating pressure range [MPa]	2-position single	0.15 to 0.7
	2-position double	0.1 to 0.7
	3-position	0.2 to 0.7
	4-position dual 3-port valve	0.15 to 0.7
External pilot (Made to Order) operating pressure range [MPa]	Operating pressure range	
	Pilot pressure range	2-position single
		2-position double
3-position	0.25 to 0.7	
Ambient and fluid temperatures [°C]		-10 to 50 (No freezing)
Max. operating frequency [Hz]	2-position single/double	5
	4-position dual 3-port valve	
	3-position	3
Manual override		Non-locking push type
		Push-turn locking slotted type
		Push-turn locking lever type
Pilot exhaust type	Internal pilot	Individual exhaust
	External pilot (Made to Order)	
Lubrication		Not required
Mounting orientation*1		Unrestricted
Impact/Vibration resistance*1 m/s ²		150/30
Coil rated voltage [DC]		24 V
Allowable voltage fluctuation [V]		±10% of the rated voltage
Power consumption [W]	Standard	0.4
	With power-saving circuit (Made to Order)	0.1 [Inrush 0.4, Holding 0.1]
Surge voltage suppressor		Diode (Varistor for non-polar type)
Indicator light		LED

*1 Impact resistance: No malfunction occurred when tested in the axial direction and at a right angle to the main valve and armature in both an energized and a de-energized state, once in each condition. (Value in the initial state)
 Vibration resistance: No malfunction occurred in a one-sweep test between 45 and 2000 Hz in the axial direction and at a right angle to the main valve and armature in both an energized and a de-energized state, once in each condition. (Value in the initial state)

Dimensions



 **Safety Instructions** Be sure to read the “Handling Precautions for SMC Products” (M-E03-3) and “Operation Manual” before use.

SMC Corporation <https://www.smcworld.com>

Specifications are subject to change without prior notice and any obligation on the part of the manufacturer.
© 2024 SMC Corporation All Rights Reserved

D-G