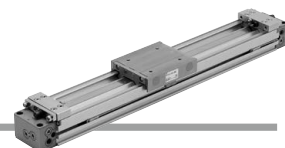


Mechanically Jointed Rodless Cylinder Cam Follower Guide Type

25A-MY1C Series

ø16, ø20, ø25, ø32, ø40, ø50, ø63

How to Order



25A-MY1C **25** **300** **M9BW**

Series compatible
with secondary
batteries

Cam follower guide type

Bore size

16	16 mm
20	20 mm
25	25 mm
32	32 mm
40	40 mm
50	50 mm
63	63 mm

Port thread type

Symbol	Type	Bore size
Nil	M thread	ø16, ø20
	Rc	ø25, ø32,
TN	NPT	ø40, ø50,
TF	G	ø63

Piping

Nil	Standard type
G	Centralized piping type

Cylinder stroke [mm]

Bore size	Standard stroke*	Long stroke	Maximum manufacturable stroke
16	100, 200, 300, 400, 500, 600 700, 800, 900, 1000, 1200 1400, 1600, 1800, 2000	Strokes of 2001 to 3000 mm (1 mm increments) exceeding the standard stroke	3000
20, 25, 32 40, 50, 63	* The stroke can be manufactured in 1 mm increments from 1 mm stroke.	Strokes of 2001 to 5000 mm (1 mm increments) exceeding the standard stroke	5000

Ordering example

* Long stroke can be ordered the same as the standard stroke. 25A-MY1C20-3000L-M9BW

* Please be advised that with a stroke of 49 mm or less, there are cases where auto switch mounting is not possible, and the performance of the air cushion may decline.

Stroke adjustment unit symbol

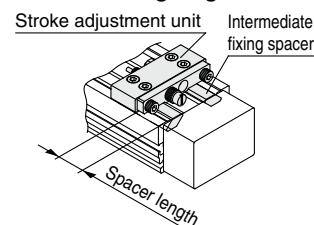
		Right side stroke adjustment unit									
		Without unit	A: With adjustment bolt		L: With low load shock absorber + Adjustment bolt		H: With high load shock absorber + Adjustment bolt				
Left side stroke adjustment unit	Without unit	Nil	SA	SA6	SA7	SL	SL6	SL7	SH	SH6	SH7
	A: With adjustment bolt	AS	A	AA6	AA7	AL	AL6	AL7	AH	AH6	AH7
	With short spacer	A6S	A6A	A6	A6A7	A6L	A6L6	A6L7	A6H	A6H6	A6H7
	With long spacer	A7S	A7A	A7A6	A7	A7L	A7L6	A7L7	A7H	A7H6	A7H7
	L: With low load shock absorber + Adjustment bolt	LS	LA	LA6	LA7	L	LL6	LL7	LH	LH6	LH7
	With short spacer	L6S	L6A	L6A6	L6A7	L6L	L6	L6L7	L6H	L6H6	L6H7
	With long spacer	L7S	L7A	L7A6	L7A7	L7L	L7L6	L7	L7H	L7H6	L7H7
	H: With high load shock absorber + Adjustment bolt	HS	HA	HA6	HA7	HL	HL6	HL7	H	HH6	HH7
	With short spacer	H6S	H6A	H6A6	H6A7	H6L	H6L6	H6L7	H6H	H6	H6H7
	With long spacer	H7S	H7A	H7A6	H7A7	H7L	H7L6	H7L7	H7H	H7H6	H7

* Spacers are used to fix the stroke adjustment unit at an intermediate stroke position.

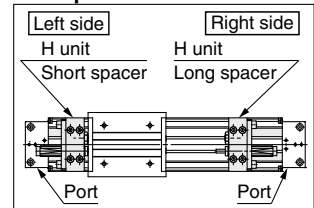
* Stroke adjustment unit H is not available for 25A-MY1C16.

* The 25A- series specifications and dimensions are the same as those of the standard model. [Click here for details.](#)

Stroke adjustment unit mounting diagram



Example of H6H7 attachment



Directional
Control Valves

Air Cylinders

Related
Products

Rotary
Actuators

Air Grippers

Vacuum
Equipment

Air Preparation
Equipment

Clean
Air Filters

Modular FRL/Pressure
Control Equipment

Fittings/Flow
Control Equipment

Detection
Switches

Fluid Control
Equipment

Electric
Actuators

Auto
Switches