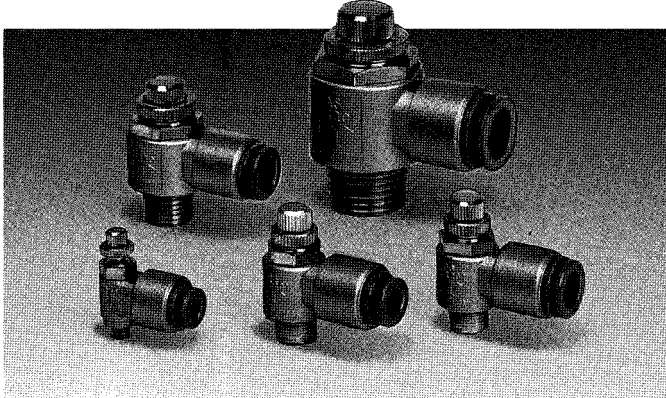


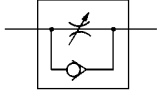
Speed Controller with One-touch Fitting

Series AS

Elbow Type (Metal Body)



JIS Symbol

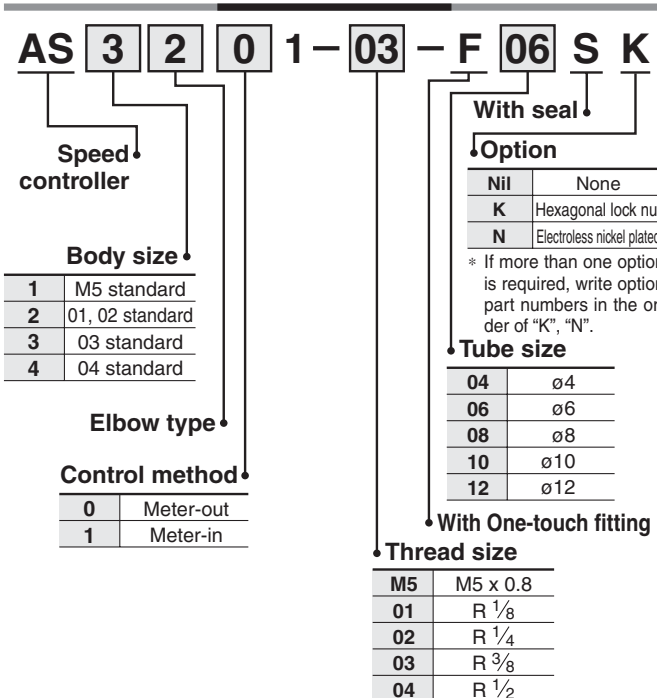


Model

Model	Port size	Applicable tubing O.D.					Applicable cylinder bore size (mm)
		4	6	8	10	12	
AS12□1-M5	M5 x 0.8	●	●				6, 10, 16, 20
AS22□1-01	R 1/8		●	●			20, 25, 32
AS22□1-02	R 1/4		●	●			20, 25, 32, 40
AS32□1-03	R 3/8			●	●		40, 50, 63
AS42□1-04	R 1/2				●	●	63, 80, 100

Note) ● marking is electroless nickel plated, provided as standard. (N specifications)

How to Order



Speed controller with One-touch fittings for metal body specifications

- Uses flame resistant resin as standard. (UL standard V-0)

Specifications

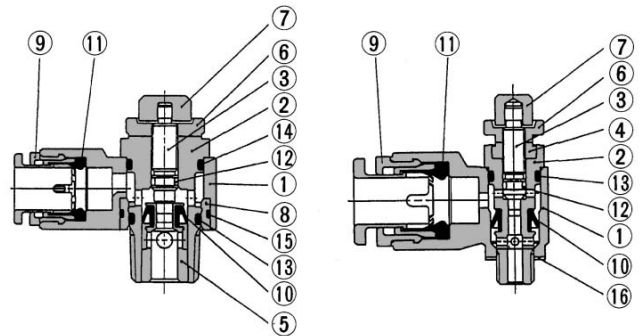
Fluid	Air
Proof pressure	1.5 MPa
Max. operating pressure	1 MPa
Min. operating pressure	0.1 MPa
Ambient and fluid temperature	- 5 to 60°C (No freezing)
Number of needle rotations	10 turns (8 turns ⁽¹⁾)
Applicable tubing material	Nylon, Soft nylon, Polyurethane
Option	Hexagon lock nut, Electroless nickel plated ⁽²⁾

Meter-out and meter-in types can be visually differentiated by the lock nut. The lock nut on the meter-out type is electroless nickel plated while the meter-in type is black zinc chromate plated.

Note 1) M5 size

Note 2) Brass parts are all electroless nickel plated.

Construction



Component Parts

No.	Description	Material	Note
①	Body A	Zinc alloy	Chromate plated
②	Body B	Brass	Electroless nickel plated
③	Needle	Brass	Electroless nickel plated
④	Needle guide	Brass	Electroless nickel plated only with M5
⑤	Seat ring	Brass	⁽¹⁾
⑥	Lock nut	Brass ⁽²⁾	Electroless nickel plated ⁽³⁾
⑦	Handle	Brass	Electroless nickel plated
⑧	Bushing	PBT	
⑨	Cassette	PBT/Stainless steel	
⑩	U-packing	NBR	
⑪	Seal	NBR	
⑫	O-ring	NBR	
⑬	O-ring	NBR	
⑭	O-ring	NBR	
⑮	O-ring	NBR	
⑯	Gasket	NBR/Stainless steel	M5 port only

Note 1) "AS22□1": Electroless nickel plated

Note 2) "AS22□1": Steel

Note 3) Meter-in type: Black zinc chromated

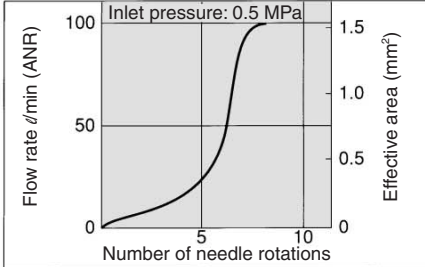
Speed Controller with One-touch Fitting Elbow Type (Metal Body) Series AS

Flow Rate and Effective Area

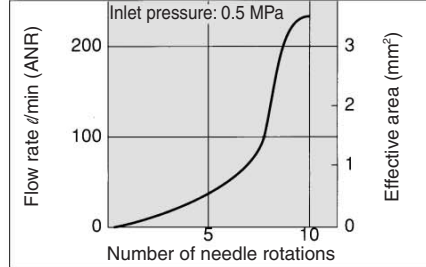
Model		AS12□1-M5	AS22□1-01	AS22□1-02		AS32□1-03		AS42□1-04	
Tubing O.D.		ø4, ø6	ø6, ø8	ø6	ø8	ø8	ø10	ø10	ø12
Controlled (Free) flow	Flow rate (ℓ/min (ANR))	100	230	390	460	790	920	1580	1710
	Effective area (mm ²)	1.5	3.5	6	7	12	14	24	26

Needle Valve/Flow Characteristics

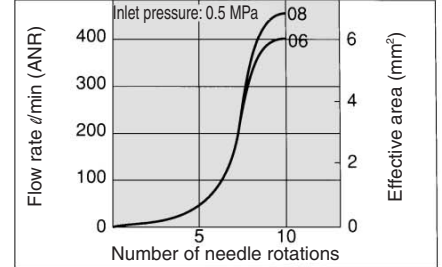
AS12□1



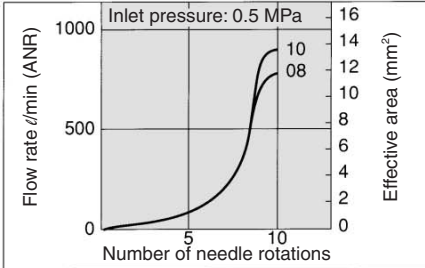
AS22□1-01



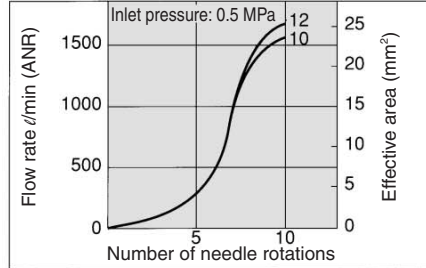
AS22□1-02



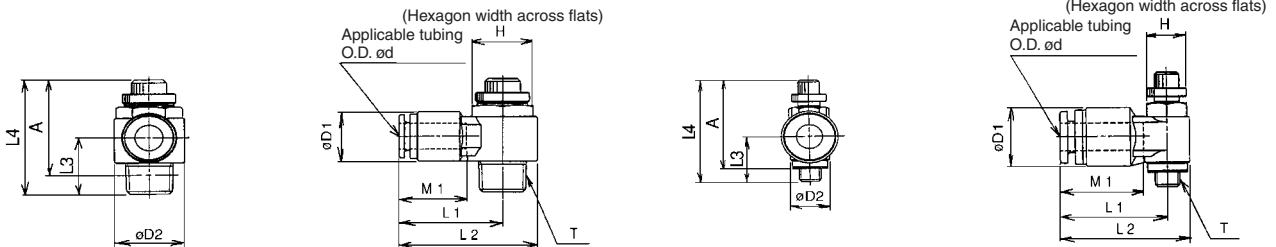
AS32□1



AS42□1



Dimensions



Model	Applicable tubing O.D. ød	T	H	D1	D2	L1	L2	L3	L4		A ^{Note)}		M1	Weight (g)
									Max.	Min.	Max.	Min.		
AS12□1-M5-F04	4	M5 x 0.8	8	13	9	21	25.5	11.2	28.3	25.5	25	22.2	16	12.7
AS12□1-M5-F06	6					21.5	26						17	12.5
AS22□1-01-F06S	6	R 1/8	12	15.5	14.6	26.6	33.9	14.7	36.4	31.4	32.4	27.4	17	33.7
AS22□1-01-F08S	8												18.5	30.7
AS22□1-02-F06S	6	R 1/4	17	15.5	19.5	28.7	38.5	17.7	40.8	35.8	34.8	29.8	17	56.3
AS22□1-02-F08S	8												18.5	52.1
AS32□1-03-F08S	8	R 3/8	19	18.2	24.3	32.7	44.9	20.1	46.9	41.9	40.6	35.6	18.5	92.9
AS32□1-03-F10S	10					33.3	45.5						21	87.6
AS42□1-04-F10S	10	R 1/2	24	22.3	28.5	36.1	50.4	25.5	55.6	50.6	47.4	42.4	21	153.8
AS42□1-04-F12S	12												22	145.5

Note) Reference dimensions of thread M5, R after installation.

⚠ Caution

Be sure to read before handling. Refer to pages 15-18-3 to 15-18-4 for Safety Instructions and Common Precautions on the products mentioned in this catalog, and refer to pages 15-8-6 to 15-8-8 for Precautions on every series.

AS

ASP

ASN

AQ

ASV

AK

ASS

ASR

ASF