

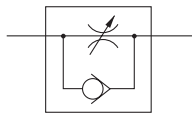
Speed Controller for Low Speed Operation

Series AS-M

Standard Type (Metal Body)



JIS Symbol



Model/Specifications

Model		AS12□0M		AS22□0M-□01		AS22□□0M-□02	
Port size	Cylinder side	M5 x 0.8	10-32 UNF	R 1/8	NPT 1/8	R 1/4	NPT 1/4
	Tubing side			Rc 1/8		Rc 1/4	
Applicable cylinder bore size (mm)		6, 10, 15, 20, 25		20, 25, 32, 40			
Proof pressure		1.5 MPa					
Max. operating pressure		1.0 MPa					
Min. operating pressure		0.1 MPa					
Ambient and fluid temperature		-5 to 60°C (No freezing)					
Number of needle rotation		20 turns		10 turns			
Option		—		With seal			
Weight (g)		11.5		36		74	
Controlled flow	Flow rate (ℓ/min (ANR))	7		12		38	
	Effective area (mm ²)	0.1		0.2		0.6	
Free flow	Flow rate (ℓ/min (ANR))	105		280		420	
	Effective area (mm ²)	1.6		4.3		6.5	

Note 1) Flow rate values are measured at 0.5 MPa and 20°C.

Note 2) Meter-out and meter-in types can be visually differentiated by the flow direction symbol on the resin body. Meter-out type is electroless nickel plated, while meter-in type is black zinc chromate plated.

Note 3) Brass parts are all electroless nickel plated. The handle on all types and the lock nut on the meter-in type are black zinc chromate plated.

How to Order

AS 2 2 0 0 M □ □ 01 □ □

Body size

1	M5 standard
2	1/8, 1/4 standard

Type

2	Direct cylinder elbow type
---	----------------------------

Control type

0	Meter-out
1	Meter-in

Thread type

Symbol	Cylinder side	Tube side
Nil	R	Rc
	Metric thread (M5)	
	Unified thread (10-32 UNF)	
N	NPT	

Option

Nil	None
S	With seal

* M5 and U10/32 are not available with seal.

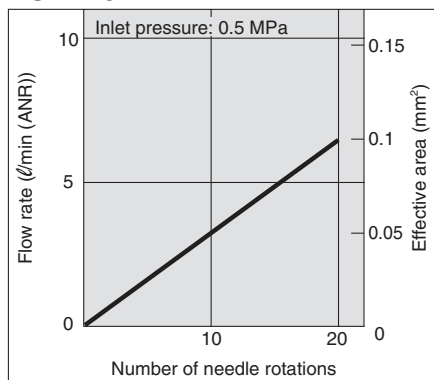
Port size

Symbol	Port size	Applicable series
M5	M5 x 0.8	AS12□0M-M5
U10/32	10-32 UNF	AS12□0M-U10/32
01	1/8	AS22□0M-01
02	1/4	AS22□0M-02

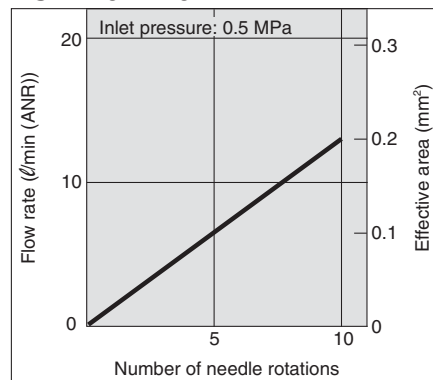
P. 15-11-3

Needle Valve/Flow Characteristics

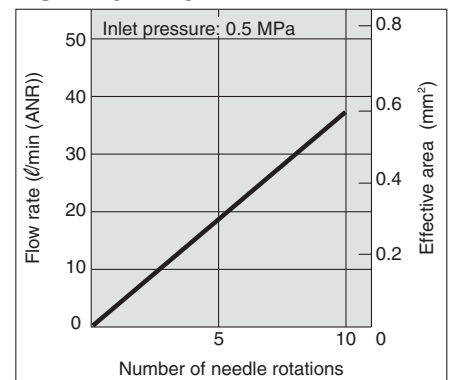
AS12□0M



AS22□0M-□01



AS22□0M-□02

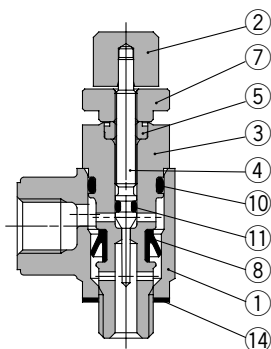


Speed Controller for Low Speed Operation Standard Type (Metal Body) **Series AS-M**

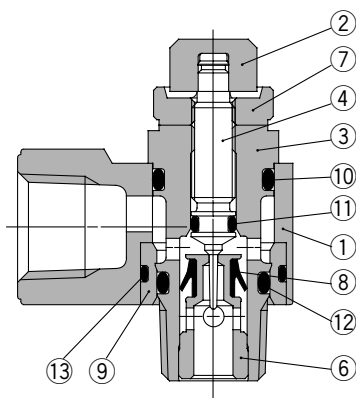
Construction

Meter-out type

AS1200M

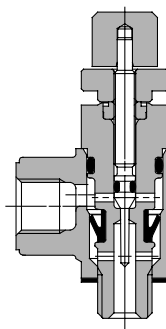


AS2200M

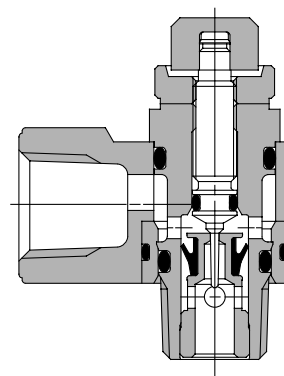


Meter-in type

AS1210M



AS2210M



Component Parts

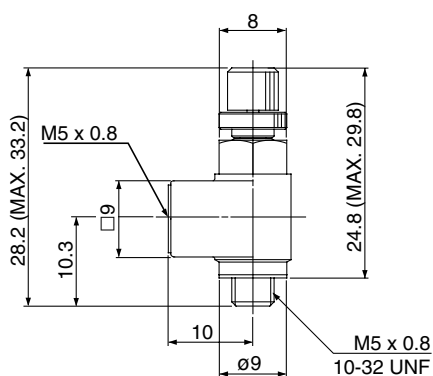
No.	Description	Material	Note
①	Body A	Zinc alloy	
②	Handle	Brass	Black zinc chromate plated
③	Body B	Brass	Electroless nickel plated
④	Needle	Brass	Electroless nickel plated
⑤	Needle guide	Brass	Electroless nickel plated
⑥	Seat ring	Brass	Electroless nickel plated
⑦	Lock nut	Brass ⁽¹⁾	Electroless nickel plated ⁽²⁾
⑧	U seal	NBR	
⑨	Bushing	PBT	
⑩	O-ring	NBR	
⑪	O-ring	NBR	
⑫	O-ring	NBR	
⑬	O-ring	NBR	
⑭	Gasket	NBR/Stainless steel	

Note 1) AS22□0M type is made of steel.

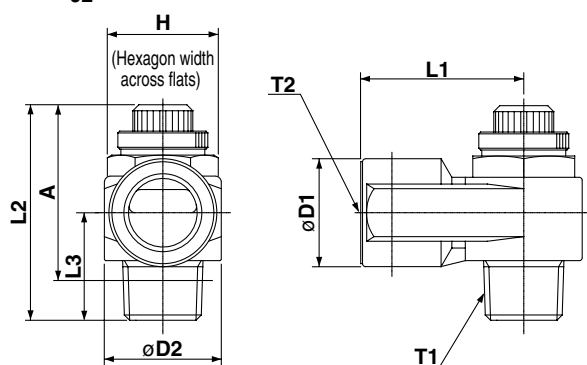
Note 2) Meter-in type is black zinc chromate plated.

Dimensions

AS12□0M



AS22□0M-□⁰¹/₀₂



Dimensions

Model	T1	T2	H	L1	L2		L3	D1	D2	A*	
					Max.	Min.				Max.	Min.
AS12□0M-M5	M5 x 0.8		8	10	33.2	28.2	10.3	9	9	29.8	24.8
AS12□0M-U10/32	10-32 UNF										
AS22□0M-01	R 1/8	Rc 1/8	12	18	36.4	31.4	14.1	14.3	14.6	32.4	27.4
AS22□0M-N01	NPT 1/8		12.7								
AS22□0M-02	R 1/4	Rc 1/4	17	27.2	39.9	35.9	18	18	19.5	34.9	29.9
AS22□0M-N02	NPT 1/4		17.5								

* Dimensions of R and NPT threads after installation.