

Speed Controller Adjustable by Flat Head Screwdriver: Standard Type

Series AS□2□0-D

Elbow Type (Metal Body)



Model/Specifications

Specifications	Model	AS12□0-M5	AS12□0-U10/32	AS22□0-□01	AS22□0-□02	AS32□0-□02	AS32□0-□03	AS42□0-□04
Port size		M5 x 0.8	10-32 UNF	1/8	1/4	1/4	3/8	1/2
Applicable cylinder bore size (mm)		6, 10, 16, 20, 25		20, 25, 32, 40		32, 40, 50, 63		80, 100
Fluid		Air						
Proof pressure		1.5 MPa						
Max. operating pressure		1 MPa						
Min. operating pressure		0.1 MPa						
Ambient and fluid temperature		-5 to 60°C (No freezing)						
Number of needle rotations		8 turns		10 turns				
Controlled flow (Free flow)	Flow rate (l/min (ANR))	105		230	460	920		1700
	Effective area (mm ²)	1.6		3.5	7	14		26

Note 1) Flow rate values are measured at 0.5 MPa and 20°C.

Note 2) Meter-out and meter-in types can be visually differentiated by the flow direction symbol on the resin body.

Note 3) Brass parts are all electroless nickel plated, provided as standard.

AS

ASP

ASN

AQ

ASV

AK

ASS

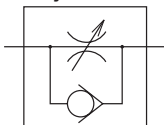
ASR

ASF

How to Order

AS 2 2 0 0-01-S D

JIS Symbol



Body size

1	M5 standard
2	1/8, 1/4 standard
3	3/8 standard
4	1/2 standard

Type

2	Elbow
---	-------

Control

0	Meter-out
1	Meter-in

Type adjustable by flat head screwdriver

With seal

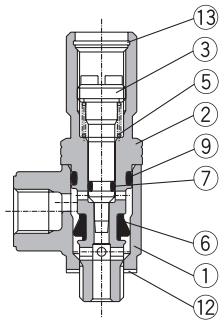
Note) In case that connecting port is either M5 or 10-32 UNF thread, it is not available with seal. With gasket is provided as standard.

Port size

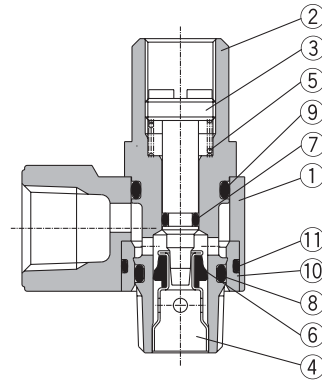
Symbol	Cylinder side	In the side of solenoid valve
M5	M5 x 0.8	M5 x 0.8
01	R 1/8	Rc 1/8
02	R 1/4	Rc 1/4
03	R 3/8	Rc 3/8
04	R 1/2	Rc 1/2
F01	R 1/8	G 1/8
F02	R 1/4	G 1/4
F03	R 3/8	G 3/8
F04	R 1/2	G 1/2
U10/32	10-32 UNF	10-32 UNF
N01	NPT 1/8	NPT 1/8
N02	NPT 1/4	NPT 1/4
N03	NPT 3/8	NPT 3/8
N04	NPT 1/2	NPT 1/2

Construction

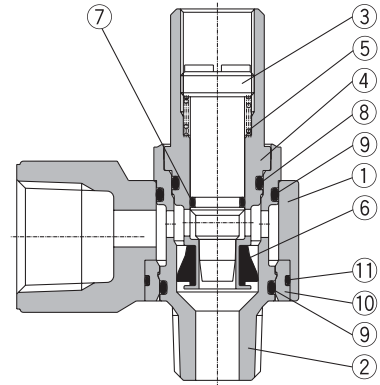
Meter-out
M5 type
U10/32 port



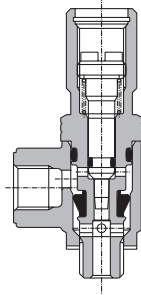
AS2200-01-D



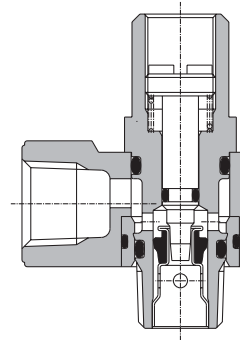
AS3200-02-D



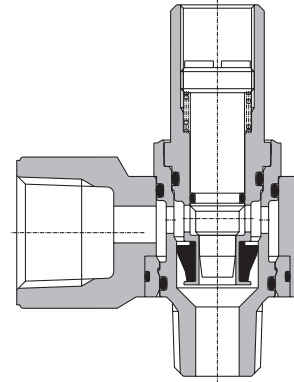
Meter-out
M5 type
U10/32 port



AS2210-01-D



AS3210-02-D

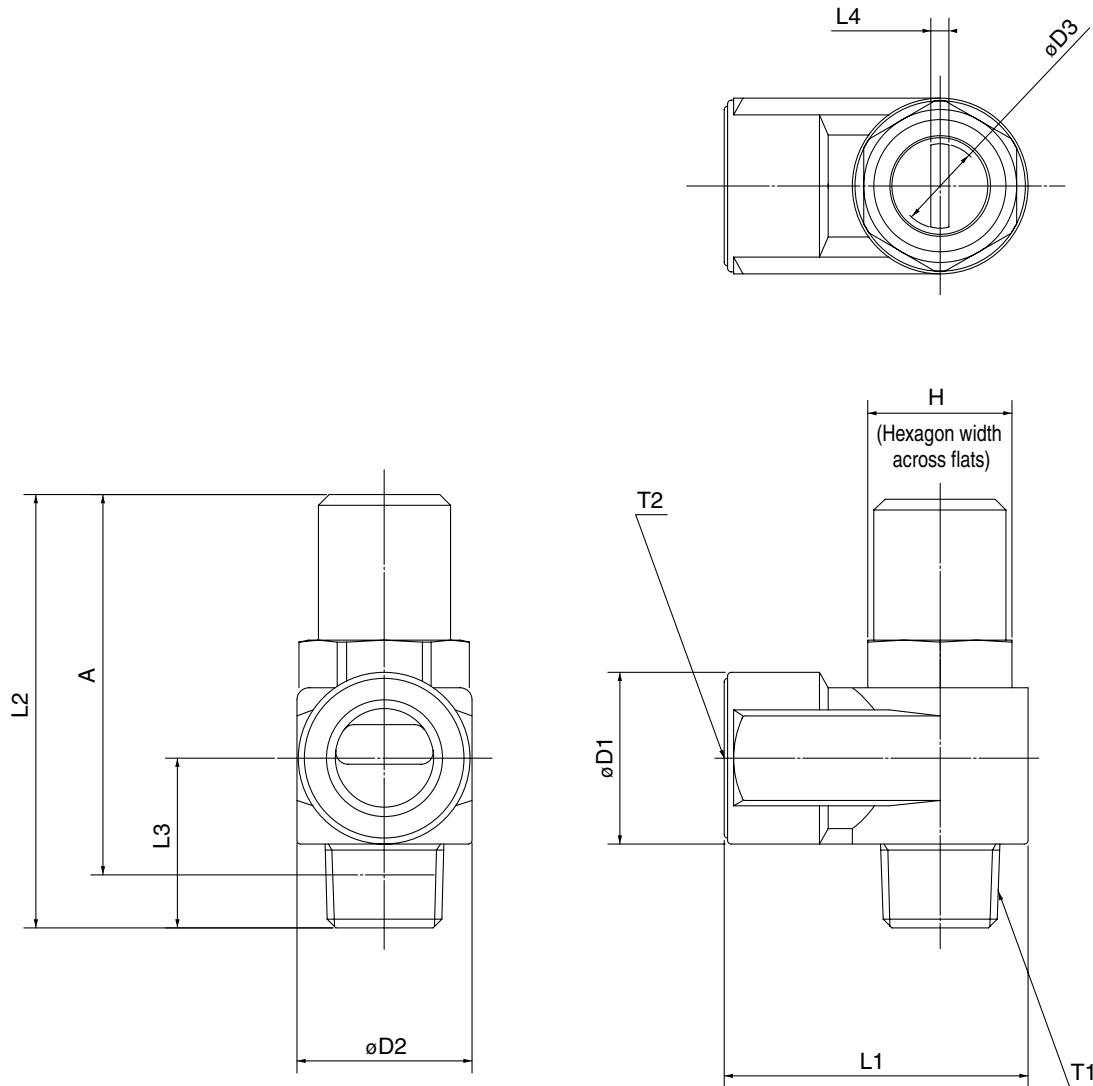


Component Parts

No.	Description	Material	Note
①	Body A	Zinc alloy	
②	Body B	Brass	Electroless nickel plated
③	Needle	Brass	Electroless nickel plated
④	Seat ring	Brass	Electroless nickel plated
⑤	Spring	Steel wire	
⑥	U seal	HNBR	
⑦	O-ring	NBR	
⑧	O-ring	NBR	
⑨	O-ring	NBR	
⑩	Bushing	PBT	
⑪	O-ring	NBR	
⑫	Gasket	NBR, Stainless steel	
⑬	Retaining ring for hole type C	Tool steel	

**Speed Controller Adjustable by Flat Head Screwdriver
Standard Type, Elbow Type (Metal Body)**

Dimensions



- AS
- ASP
- ASN
- AQ
- ASV
- AK
- ASS
- ASR
- ASF

Dimensions

Model	T1	T2	H	D1	D2	D3	L1	L2	L3	L4	A°	
AS12□0-M5-D	M5 x 0.8	M5 x 0.8	8	9	9	4.7	10	31	10.3	0.7	27.4	
AS12□0-U10/32-D	10-32 UNF	10-32 UNF										
AS22□0-01-SD	R 1/8	Rc 1/8	12	14.3	14.6	7.2	18	35.6	14.1	1.2	31.6	
AS22□0-F01-SD		G 1/8										
AS22□0-N01-SD	NPT 1/8	NPT 1/8	12.7	18	19.5	7.2	27.2	40.7	18	1.2	36.7	
AS22□0-02-SD	R 1/4	Rc 1/4										
AS22□0-F02-SD		G 1/4	17	17.5	19	22.5	24.3	9.8	30	55.3	22.4	1.2
AS22□0-N02-SD	NPT 1/4	NPT 1/4										
AS32□0-02-SD	R 1/4	Rc 1/4	19	22.5	24.3	9.8	30	55.3	22.4	1.2	49.3	
AS32□0-F02-SD		G 1/4										
AS32□0-N02-SD	NPT 1/4	NPT 1/4	19	22.5	24.3	9.8	30	53.7	20.8	1.2	47.4	
AS32□0-03-SD	R 3/8	Rc 3/8										
AS32□0-F03-SD		G 3/8	24	27.5	28.5	12.4	38.5	63.8	26.7	1.2	55.8	
AS32□0-N03-SD	NPT 3/8	NPT 3/8										
AS42□0-04-SD	R 1/2	Rc 1/2	24	27.5	28.5	12.4	38.5	63.8	26.7	1.2	55.8	
AS42□0-F04-SD		G 1/2										
AS42□0-N04-SD	NPT 1/2	NPT 1/2	23.8									

* Reference thread dimensions after installation.