



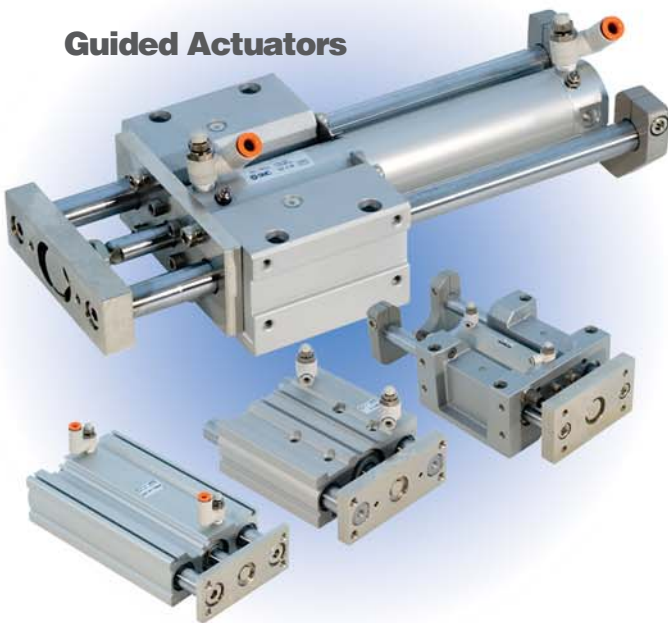
**New Option!**

**Basic Cylinders**



## Simplified ordering of **SPEED CONTROLS** with **ACTUATORS**

**Guided Actuators**



- *Single part number*  
Specify speed controls by tubing size and controller style
- *Sized for cylinder performance*  
Adjustability from minimum to maximum actuator speed
- *One-touch connection convenience*  
Push to connect tubing connection speeds installation

**Compact Cylinders**



**Quick Reference Guide**

# How to Order

## NCDQ2B40-50D-M9PL — R 07 US

1. Configure standard actuator part number
2. Select speed control style
3. Select available tube size from the series chart
4. Using the appropriate symbols for 2 and 3, configure the complete part number

Standard Part Number

Speed Control Style

Tube O.D.

Symbol	Description
R	Right angle
U	Universal elbow

Inch Sizes		Metric Sizes	
Symbol	Diameter	Symbol	Diameter
01	1/8"	02	2mm
03	5/32"	04	4mm
07	1/4"	06	6mm
09	5/16"	08	8mm
11	3/8"	10	10mm
13	1/2"	12	12mm

- Two (2) meter-out speed controls will be provided with each actuator. To minimize the risk of shipping damage, they will not be installed prior to shipment. If installation is desired, please contact your SMC representative.

## Basic Cylinders

## Compact Body Cylinders

### Series NCM

Bore		Tubing OD					
		1/8"	5/32"	1/4"	5/16"	3/8"	1/2"
		01	03	07	09	11	13
7/16"	044	•	•	•			
9/16"	056	•	•	•			
3/4"	075		•	•	•		
7/8"	088		•	•	•		
1-1/16"	106		•	•	•		
1-1/4"	125		•	•	•		
1-1/2"	150		•	•	•		
2"	200			•	•	•	



- Domestic interchangeable non-repairable cylinder
- Standard piston wear ring increase service life
- See catalog **IBD20-2** for cylinder details

### Series NCQ8

Bore		Tubing OD					
		1/8"	5/32"	1/4"	5/16"	3/8"	1/2"
		01	03	07	09	11	13
9/16"	056	•	•	•			
3/4"	075	•	•	•			
1-1/16"	106		•	•	•		
1-1/2"	150		•	•	•		
2"	200		•	•	•		
2-1/2"	250			•	•	•	
3"	300			•	•	•	
4"	400				•	•	•



- Domestic interchangeable compact body cylinder
- Super compact design is available for further space savings
- For cylinder details, see catalog **IBD20-1**

### Series NCG

Bore		Tubing OD					
		1/8"	5/32"	1/4"	5/16"	3/8"	1/2"
		01	03	07	09	11	13
3/4"	20	■	•	•	•	□	
1"	25	■	•	•	•	□	
1-1/4"	32		•	•	•		
1-1/2"	40		•	•	•		
2"	50			•	•	•	
2-1/2"	63			•	•	•	



- Repairable round body cylinder
- Capable of speeds up to 40 in/sec
- For cylinder details, see catalog **NC145**

- Available only on air cushion model
- Available only on urethane cushion model

### Series NCQ2 (Inch)

Bore		Tubing OD					
		1/8"	5/32"	1/4"	5/16"	3/8"	1/2"
		01	03	07	09	11	13
12		•	•	•			
16		•	•	•			
20		•	•	•			
25		•	•	•			
32			•	•	•		
40			•	•	•		
50				•	•	•	
63				•	•	•	
80					•	•	•
100					•	•	•
125					•	•	•
140					•	•	•
160					•	•	•



### Series CQ2 (Metric)

Bore (mm)		Tubing OD					
		2mm	4mm	6mm	8mm	10mm	12mm
		02	04	06	08	10	12
12		■	•	•			
16		■	•	•			
20		■	•	•			
25		■	•	•			
32			•	•	•		
40			•	•	•		
50				•	•	•	
63				•	•	•	
80					•	•	•
100					•	•	•
125					•	•	•
140					•	•	•
160					•	•	•

- Hard anodized, compact aluminum body
- Both inch (NCQ2) and metric (CQ2) models available
- 13 bore size available
- See catalog **N320** for cylinder details

### Series NCA1

Bore		Tubing OD					
		1/8"	5/32"	1/4"	5/16"	3/8"	1/2"
		01	03	07	09	11	13
1-1/2"	150			•	•	•	•
2"	200			•	•	•	•
2-1/2"	250			•	•	•	•
3-1/4"	325			•	•	•	•
4"	400			•	•	•	•



- NFPA interchangeable tie rod cylinder
- Medium duty aluminum design with standard air cushions
- See catalog **N304** for cylinder details

- Only available in right angle type.

## TWO BASIC STYLES

### Right angle type



Simple, compact design

### Universal elbow



Inlet swivels for maximum connection flexibility

### Common features:

- Body rotates on stud for easy final positioning for inlet
- One-touch connection for simple, secure attachment of tubing
- Knurled lock nut and sealant are standard

For this actuator option, meter-out is the only configuration offered. SMC offers the broadest range of speed controls in the industry, ask for catalog **NC140** for details on our full line.

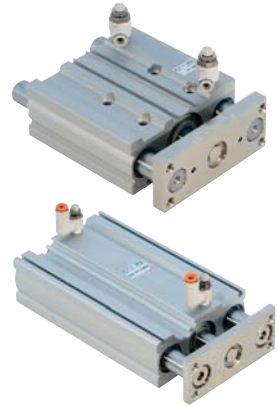
## Guided Cylinders

### Series MGP/MGQ

Bore	Tubing OD Inch port actuator						Tubing OD Metric port actuator					
	1/8"	5/32"	1/4"	5/16"	3/8"	1/2"	2mm	4mm	6mm	8mm	10mm	12mm
	01	03	07	09	11	13	02	04	06	08	10	12
12	●	●	●				■	●	●			
16	●	●	●				■	●	●			
20		●	●	●				●	●	●		
25		●	●	●				●	●	●		
32		●	●	●				●	●	●		
40		●	●	●				●	●	●		
50			●	●	●				●	●	●	
63			●	●	●				●	●	●	
80				●	●	●				●	●	●
100				●	●	●				●	●	●

■ Only available in right angle type.

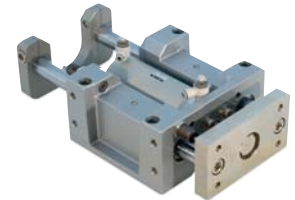
- Compact body guided actuators
- Basic (MGQ) and enhanced (MGP) models available
- For actuator details, see catalog **ES20-117** (MGP) or **E225** (MGQ)



### Series MGG

Bore	Tubing OD Inch port actuator						Tubing OD Metric port actuator					
	1/8"	5/32"	1/4"	5/16"	3/8"	1/2"	2mm	4mm	6mm	8mm	10mm	12mm
	01	03	07	09	11	13	02	04	06	08	10	12
20		●	●	●				●	●	●		
25		●	●	●				●	●	●		
32		●	●	●				●	●	●		
40		●	●	●				●	●	●		
50			●	●	●				●	●	●	

- Actuator with integrated guide rods
- Integral shock absorbers for controlled stop
- See catalog **ES20-191** for actuator details



### Series MGC

Bore	Tubing OD Inch port actuator						Tubing OD Metric port actuator					
	1/8"	5/32"	1/4"	5/16"	3/8"	1/2"	2mm	4mm	6mm	8mm	10mm	12mm
	01	03	07	09	11	13	02	04	06	08	10	12
20		●	●					●	●			
25		●	●					●	●			
32		●	●	●				●	●	●		
40		●	●	●				●	●	●		
50			●	●	●				●	●	●	

- Compact version of series MGG
- Standard air cushions for end of stroke energy absorption
- See catalog **ES20-191** for actuator details



Go online to save time and money with SMC's dynamic real-time E tech website. There you can view and download both 2D and 3D CAD files in multiple formats. This is provided free of charge to our customers.

Website URL <http://www.smcetech.com>



Selecting the right product is made easy via our database driven part number configuration and validation.

Product catalogs available for download and printing.



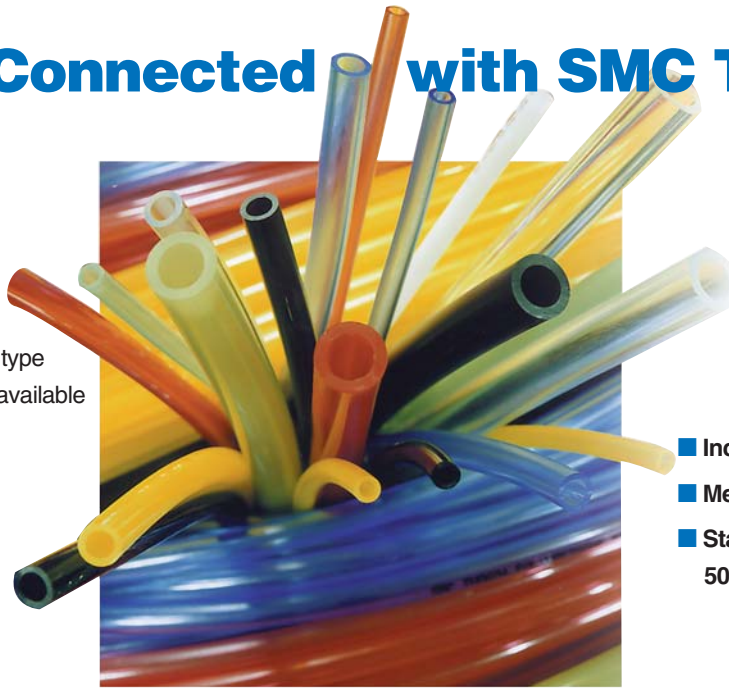
# Get Connected with SMC Tubing!

## Polyurethane

- Extreme flexibility
- Abrasion and kink resistant
- Good pressure rating
- Low compression set
- Three durometer choices
- 29 standard colors in standard type
- Standard coiled or flat models available

## Nylon

- High pressure rating
- Broad chemical resistance
- High thermal resistance
- Two durometer choices
- Light weight
- High abrasion resistance
- Seven standard colors available



- Inch sizes from 1/8" to 1/2"
- Metric sizes from 2mm to 16mm
- Standard roll lengths to 1,000' or 500m

### Tubing Tools



### Also available:

- Clean room tubing
- Anti static tubing
- Weld spatter resistant
- Fluoropolymer tubing

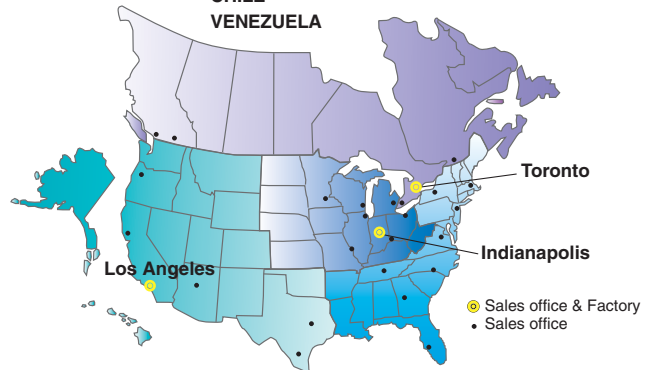
## Global Manufacturing, Distribution and Service Network

### Worldwide Subsidiaries

EUROPE			ASIA	NORTH AMERICA	SOUTH AMERICA	OCEANIA
AUSTRIA	GREEK	RUSSIA	CHINA	CANADA	ARGENTINA	AUSTRALIA
BELGIUM	HUNGARY	SLOVAKIA	HONG KONG	MEXICO	BOLIVIA	NEW ZEALAND
BULGARIA	IRELAND	SLOVENIA	INDIA	USA	BRAZIL	
CROATIA	ITALY	SPAIN/PORTUGAL	JAPAN		CHILE	
CZECH	LATVIA	SWEDEN	MALAYSIA		VENEZUELA	
DENMARK	LIETUVA	SWITZERLAND	PHILIPPINES			
ESTONIA	NETHERLANDS	UNITED KINGDOM	SINGAPORE			
FINLAND	NORWAY		SOUTH KOREA			
FRANCE	POLAND		TAIWAN			
GERMANY	ROMANIA		THAILAND			

### U.S. & Canadian Sales Offices

EAST	WEST	MIDWEST	CANADA
Atlanta	Austin	Chicago	Calgary
Boston	Dallas	Cincinnati	Montreal
Charlotte	Los Angeles	Cleveland	Toronto
Nashville	Phoenix	Detroit	Vancouver
New Jersey	Portland	Indianapolis	Windsor
Richmond	San Francisco	Milwaukee	
Rochester		Minneapolis	
Tampa		St. Louis	



Your authorized representative:



SMC Corporation of America  
3011 N. Franklin Road  
Indianapolis, IN 46226  
[www.smcusa.com](http://www.smcusa.com)

SMC Pneumatics (Canada) Ltd.  
6768 Financial Drive Mississauga  
Ontario, L5N 7J6 Canada  
[www.smc Pneumatics.ca](http://www.smc Pneumatics.ca)

**(800) SMC.SMC1 (762-7621)**  
For International inquiries: [www.smcworld.com](http://www.smcworld.com)