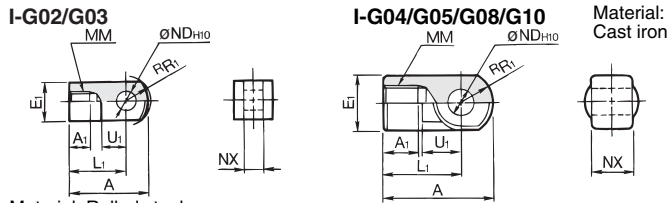


Series CG1

Accessory Bracket Dimensions

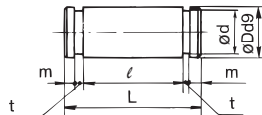
Single Knuckle Joint



Material: Rolled steel

Part no.	Applicable bore (mm)	A	A ₁	E ₁	L ₁	MM	R ₁	U ₁	ND _{H10}	NX
I-G02	20	34	8.5	□16	25	M8 x 1.25	10.3	11.5	8 ^{+0.058} ₀	8 ^{-0.2} _{-0.4}
I-G03	25, 32	41	10.5	□20	30	M10 x 1.25	12.8	14	10 ^{+0.058} ₀	10 ^{-0.2} _{-0.4}
I-G04	40	42	14	∅22	30	M14 x 1.5	12	14	10 ^{+0.058} ₀	18 ^{-0.3} _{-0.5}
I-G05	50, 63	56	18	∅28	40	M18 x 1.5	16	20	14 ^{+0.070} ₀	22 ^{-0.3} _{-0.5}
I-G08	80	71	21	∅38	50	M22 x 1.5	21	27	18 ^{+0.070} ₀	28 ^{-0.3} _{-0.5}
I-G10	100	79	21	∅44	55	M26 x 1.5	24	31	22 ^{+0.084} ₀	32 ^{-0.3} _{-0.5}

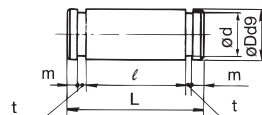
Knuckle Pin



Material: Carbon steel

Part no.	Applicable bore (mm)	Dd ₉	L	d	ℓ	m	t	Applicable snap ring
IY-G02	20	8 ^{-0.040} _{-0.076}	21	7.6	16.2	1.5	0.9	Type C 8 for axis
IY-G03	25, 32	10 ^{-0.040} _{-0.076}	25.6	9.6	20.2	1.55	1.15	Type C 10 for axis
IY-G04	40	10 ^{-0.040} _{-0.076}	41.6	9.6	36.2	1.55	1.15	Type C 10 for axis
IY-G05	50, 63	14 ^{-0.050} _{-0.093}	50.6	13.4	44.2	2.05	1.15	Type C 14 for axis
IY-G08	80	18 ^{-0.050} _{-0.093}	64	17	56.2	2.55	1.35	Type C 18 for axis
IY-G10	100	22 ^{-0.065} _{-0.117}	72	21	64.2	2.55	1.35	Type C 22 for axis

Clevis Pin

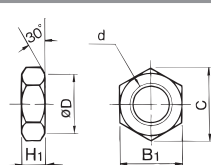


Material: Carbon steel

Part no.	Applicable bore (mm)	Dd ₉	L	d	ℓ	m	t	Applicable snap ring
CD-G02	20	8 ^{-0.040} _{-0.076}	43.4	7.6	38.6	1.5	0.9	Type C 8 for axis
CD-G25	25	10 ^{-0.040} _{-0.076}	48	9.6	42.6	1.55	1.15	Type C 10 for axis
CD-G03	32	12 ^{-0.050} _{-0.093}	59.4	11.5	54	1.55	1.15	Type C 12 for axis
CD-G04	40	14 ^{-0.050} _{-0.093}	71.4	13.4	65	2.05	1.15	Type C 14 for axis
CD-G05	50	16 ^{-0.050} _{-0.093}	86	15.2	79.6	2.05	1.15	Type C 16 for axis
CD-G06	63	18 ^{-0.050} _{-0.093}	105.4	17	97.8	2.45	1.35	Type C 18 for axis

* Clevis pin and knuckle pin are common for bore size ∅80 and ∅100.

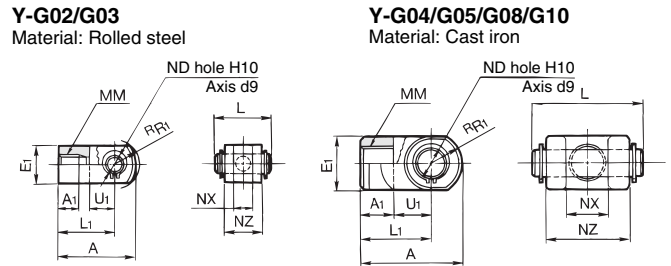
Rod End Nut



Material: Rolled steel

Part no.	Applicable bore (mm)	d	H ₁	B ₁	C	D
NT-02	20	M8 x 1.25	5	13	(15.0)	12.5
NT-03	25, 32	M10 x 1.25	6	17	(19.6)	16.5
NT-G04	40	M14 x 1.5	8	19	(21.9)	18
NT-05	50, 63	M18 x 1.5	11	27	(31.2)	26
NT-08	80	M22 x 1.5	13	32	(37.0)	31
NT-10	100	M26 x 1.5	16	41	(47.3)	39

Double Knuckle Joint



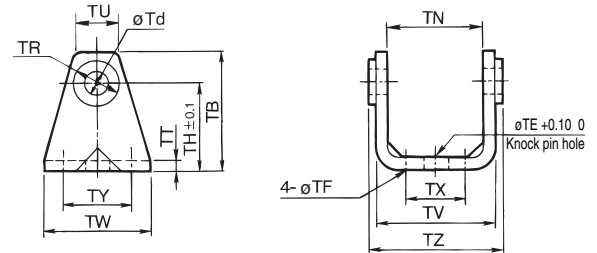
Part no.	Applicable bore (mm)	A	A ₁	E ₁	L ₁	MM	R ₁	U ₁	ND	NX	NZ	L	Applicable pin part no.
Y-G02	20	34	8.5	□16	25	M8 x 1.25	10.3	11.5	8	8 ^{+0.4} _{-0.2}	16	21	IY-G02
Y-G03	25, 32	41	10.5	□20	30	M10 x 1.25	12.8	14	10	10 ^{+0.4} _{-0.2}	20	25.6	IY-G03
Y-G04	40	42	16	∅22	30	M14 x 1.5	12	14	10	18 ^{+0.5} _{-0.3}	36	41.6	IY-G04
Y-G05	50, 63	56	20	∅28	40	M18 x 1.5	16	20	14	22 ^{+0.5} _{-0.3}	44	50.6	IY-G05
Y-G08	80	71	23	∅38	50	M22 x 1.5	21	27	18	28 ^{+0.5} _{-0.3}	56	64	IY-G08
Y-G10	100	79	24	∅44	55	M26 x 1.5	24	31	22	32 ^{+0.5} _{-0.3}	64	72	IY-G10

* Knuckle pin and set ring are shipped together.

Pivot Bracket (Order separately)

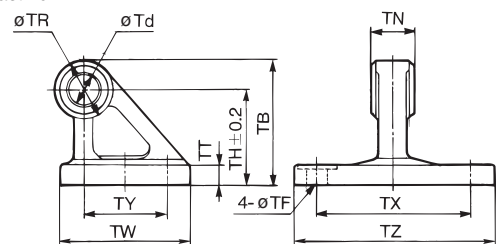
∅20 to ∅63

Material: Rolled steel



∅80, ∅100

Material: Cast iron



Part no.	Applicable bore (mm)	TB	Td	TE	TF	TH	TN	TR	TT
CG-020-24A	20	36	8	10	5.5	25	(29.3)	13	3.2
CG-025-24A	25	43	10	10	5.5	30	(33.1)	15	3.2
CG-032-24A	32	50	12	10	6.6	35	(40.4)	17	4.5
CG-040-24A	40	58	14	10	6.6	40	(49.2)	21	4.5
CG-050-24A	50	70	16	20	9	50	(60.4)	24	6
CG-063-24A	63	82	18	20	11	60	(74.6)	26	8
CG-080-24A	80	73	18	—	11	55	28 ^{+0.1} _{-0.3}	36	11
CG-100-24A	100	90	22	—	13.5	65	32 ^{+0.1} _{-0.3}	50	12

Part no.	Applicable bore (mm)	TU	TV	TW	TX	TY	TZ	Applicable pin O.D.
CG-020-24A	20	(18.1)	(35.8)	42	16	28	38.3	8d ₉ ^{-0.040} _{-0.076}
CG-025-24A	25	(20.7)	(39.8)	42	20	28	42.1	10d ₉ ^{-0.040} _{-0.076}
CG-032-24A	32	(23.6)	(49.4)	48	22	28	53.8	12d ₉ ^{-0.050} _{-0.093}
CG-040-24A	40	(27.3)	(58.4)	56	30	30	64.6	14d ₉ ^{-0.050} _{-0.093}
CG-050-24A	50	(29.7)	(72.4)	64	36	36	79.2	16d ₉ ^{-0.050} _{-0.093}
CG-063-24A	63	(34.3)	(90.4)	74	46	46	97.2	18d ₉ ^{-0.050} _{-0.093}
CG-080-24A	80	—	—	72	85	45	110	18d ₉ ^{-0.050} _{-0.093}
CG-100-24A	100	—	—	93	100	60	130	22d ₉ ^{-0.065} _{-0.117}

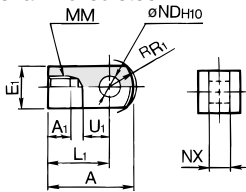
Series CLG1

Accessory Bracket Dimensions

Single Knuckle Joint

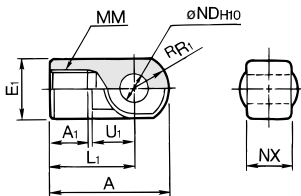
I-G02/G03

Material: Rolled steel



I-G04

Material: Cast iron

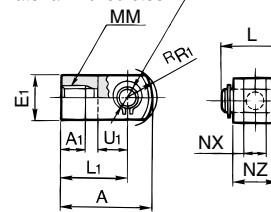


Part no.	Applicable bore size (mm)	A	A1	E1	L1	MM	RR1	U1	NDH10	NX
I-G02	20	34	8.5	□16	25	M8 x 1.25	10.3	11.5	8 ^{+0.058} ₀	8 ^{-0.2} _{-0.4}
I-G03	25, 32	41	10.5	□20	30	M10 x 1.25	12.8	14	10 ^{+0.058} ₀	10 ^{-0.2} _{-0.4}
I-G04	40	42	14	∅22	30	M14 x 1.5	12	14	10 ^{+0.058} ₀	18 ^{-0.3} _{-0.5}

Double Knuckle Joint * Knuckle pin and snap ring are packaged.

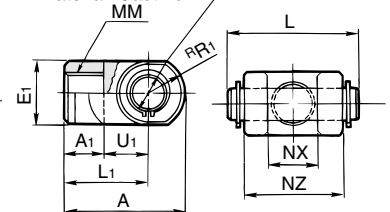
Y-G02/G03

Material: Rolled steel



Y-G04

Material: Cast iron

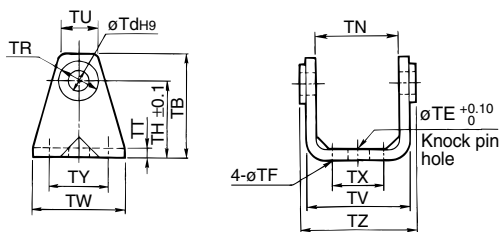


Part no.	Applicable bore size (mm)	A	A1	E1	L1	MM	RR1	U1	NDH10	NX	NZ	L	Applicable pin part no.
Y-G02	20	34	8.5	□16	25	M8 x 1.25	10.3	11.5	8 ^{+0.058} ₀	8 ^{-0.4} _{-0.2}	16	21	IY-G02
Y-G03	25, 32	41	10.5	□20	30	M10 x 1.25	12.8	14	10 ^{+0.058} ₀	10 ^{-0.4} _{-0.2}	20	25.6	IY-G03
Y-G04	40	42	16	∅22	30	M14 x 1.5	12	14	10 ^{+0.058} ₀	18 ^{-0.5} _{-0.3}	36	41.6	IY-G04

Rod Side Pivot Bracket

∅20 to ∅40

Material: Rolled steel



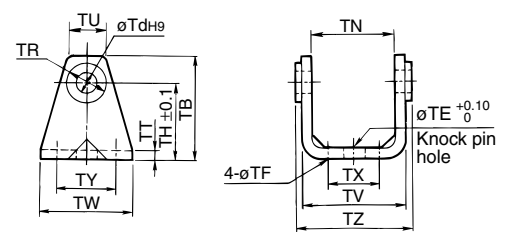
Part no.	Applicable bore size (mm)	TB	TdH9	TE	TF	TH	TN
CLG-020-24	20	42	8 ^{+0.036} ₀	10	5.5	31	40
CLG-025-24	25	48	10 ^{+0.036} ₀	10	5.5	37	47
CLG-032-24	32	53	12 ^{+0.043} ₀	10	6.6	38.5	47
CLG-040-24	40	60	14 ^{+0.043} ₀	10	6.6	42.5	55

Part no.	Applicable bore size (mm)	TR	TT	TU	TV	TW	TX	TY	TZ
CLG-020-24	20	13	3.2	21.2	47.8	42	26	28	50
CLG-025-24	25	15	3.2	21.3	54.8	42	28	28	57
CLG-032-24	32	17	4.5	25.6	57.4	48	28	28	61.4
CLG-040-24	40	21	4.5	26.3	65.4	56	36	30	71.4

Head Side Pivot Bracket

∅20 to ∅40

Material: Rolled steel

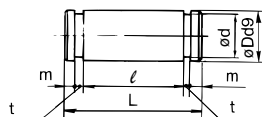


Part no.	Applicable bore size (mm)	TB	Td	TE	TF	TH	TN
CG-020-24A	20	36	8	10	5.5	25	(29.3)
CG-025-24A	25	43	10	10	5.5	30	(33.1)
CG-032-24A	32	50	12	10	6.6	35	(40.4)
CG-040-24A	40	58	14	10	6.6	40	(49.2)

Part no.	Applicable bore size (mm)	TR	TT	TU	TV	TW	TX	TY	TZ
CG-020-24A	20	13	3.2	18.1	35.8	42	16	28	38.3
CG-025-24A	25	15	3.2	20.7	39.8	42	20	28	42.1
CG-032-24A	32	17	4.5	23.6	49.4	48	22	28	53.8
CG-040-24A	40	21	4.5	27.3	58.4	56	30	30	64.6

Knuckle Pin

Material: Carbon steel

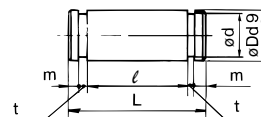


Part no.	Applicable bore size (mm)	Dd9	L	d
IY-G02	20	8 ^{-0.040} _{-0.076}	21	7.6
IY-G03	25, 32	10 ^{-0.040} _{-0.076}	25.6	9.6
IY-G04	40	10 ^{-0.040} _{-0.076}	41.6	9.6

Part no.	ℓ	m	t	Applicable snap ring
IY-G02	16.2	1.5	0.9	Type C 8 for axis
IY-G03	20.2	1.55	1.15	Type C 10 for axis
IY-G04	36.2	1.55	1.15	Type C 10 for axis

Clevis Pin

Material: Carbon steel

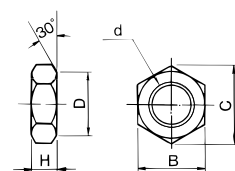


Part no.	Applicable bore size (mm)	Dd9	L	d
CD-G02	20	8 ^{-0.040} _{-0.076}	43.4	7.6
CD-G25	25	10 ^{-0.040} _{-0.076}	48	9.6
CD-G03	32	12 ^{-0.050} _{-0.093}	59.4	11.5
CD-G04	40	14 ^{-0.050} _{-0.093}	71.4	13.4

Part no.	ℓ	m	t	Applicable snap ring
CD-G02	38.6	1.5	0.9	Type C 8 for axis
CD-G25	42.6	1.55	1.15	Type C 10 for axis
CD-G03	54	1.55	1.15	Type C 12 for axis
CD-G04	65	2.05	1.15	Type C 14 for axis

Rod End Nut

Material: Carbon steel



Part no.	Applicable bore size (mm)	B	C	D	d	H
NT-02	20	13	15.0	12.5	M8 x 1.25	5
NT-03	25, 32	17	19.6	16.5	M10 x 1.25	6
NT-G04	40	19	21.9	18	M14 x 1.5	8