

Series CJ2

Mounting Style and Accessory/For details, refer to page 6-3-11.

Mounting		Basic style	Axial foot style	Rod side flange style	Double * clevis style
Standard equipment	Mounting nut	●	●	●	—
	Rod end nut	●	●	●	●
	Clevis pin	—	—	—	●
Option	Single knuckle joint	●	●	●	●
	Double knuckle joint *	●	●	●	●
	T-bracket	—	—	—	●

* Pin and snap ring are shipped together with double clevis and double knuckle joint.

Mounting Bracket Part No.

Mounting bracket	Bore size (mm)		
	6	10	16
Foot bracket	CJ-L006B	CJ-L010B	CJ-L016B
Flange bracket	CJ-F006B	CJ-F010B	CJ-F016B
T-bracket *	—	CJ-T010B	CJ-T016B

* T-bracket is used with double clevis (D).

Auto Switch Mounting Bracket Part No. (Band mounting style)

Bore size (mm)	Auto switch mounting bracket no.	Note
6	BJ2-006	Common for the types of D-C7/C8 and D-H7
10	BJ2-010	
16	BJ2-016	

[Mounting screws set made of stainless steel]

The following set of mounting screws made of stainless steel is also available. Use it in accordance with the operating environment.

(Please order the mounting band separately, since it is not included.)

BBA4: For D-C7/C8/H7

"D-H7BAL" switch is set on the cylinder with the stainless steel screws above when shipped.

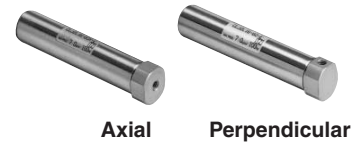
When only a switch is shipped independently, "BBA4" screws are attached.

Theoretical Output

Refer to "Double acting cylinder" in Theoretical Output Table 1 of Technical data 3 on page 6-19-1.

Port Location on Head Cover

Either perpendicular to the cylinder axis or in-line with the cylinder axis is available for basic style. (ø6 is available only as in-line style.)



Axial Perpendicular

Weight

(g)

Bore size (mm)		6	10	16
Basic weight *		15	24	55
Additional weight per each 15 mm of stroke		2	4	6.5
Mounting bracket weight	Axial foot style	8	8	20
	Rod side flange style	5	5	15
	Double clevis style (With pin) *	—	4	10
Accessory bracket	Single knuckle joint	—	16	22
	Double knuckle joint (With pin)	—	24	19.5
	T-bracket	—	32	50

* Mounting nut and rod end nut are included in the basic weight.

** Mounting nut is not attached to the double clevis style, so the mounting nut weight is already subtracted.

Calculation: (Example) CJ2L10-45

- Basic weight 24 (ø10)
 - Additional weight 4/15 stroke
 - Cylinder stroke 45 stroke
 - Mounting bracket weight .. 8 (Axial foot style)
- 24 + 4/15 x 45 + 8 = 44 g

⚠ Precautions

Be sure to read before handling. Refer to pages 6-20-3 to 6-20-6 for Safety Instructions and Actuator Precautions.

Mounting

⚠ Caution

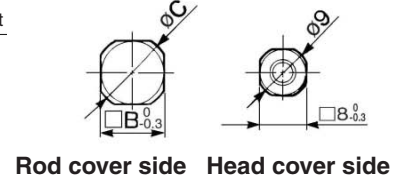
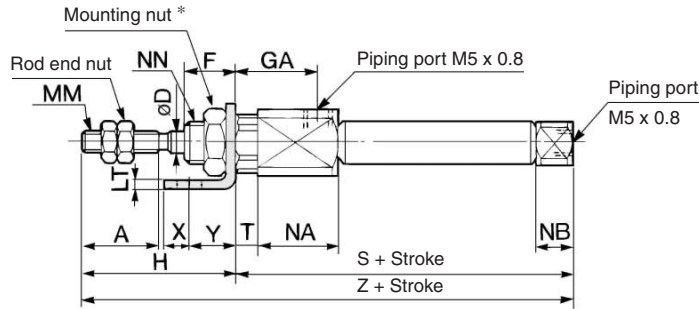
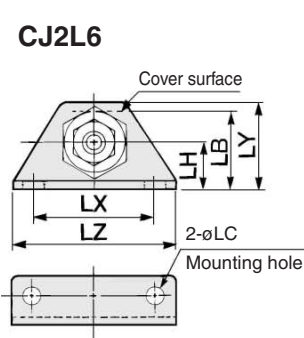
- During installation, secure the rod cover and tighten by applying an appropriate tightening force to the retaining nut or to the rod cover body. If the head cover is secured or the head cover is tightened, the cover could rotate, leading to the deviation.
- Tighten the retaining screws to an appropriate tightening torque within the range given below.
 - ø6: 2.1 to 2.5 N·m, ø10: 5.9 to 6.4 N·m, ø16: 10.8 to 11.8 N·m
- To remove and install the snap ring for the knuckle pin or the clevis pin, use an appropriate pair of pliers (tool for installing a type C snap ring). In particular, use a pair of ultra-mini pliers such as the Super Tool CSM-07A for removing and installing the snap ring on the ø10 cylinder.
- In the case of auto switch rail mounting style, do not remove the rail that is mounted. Because retaining screws extend into the cylinder, this could lead to an air leak.

Series CJ2

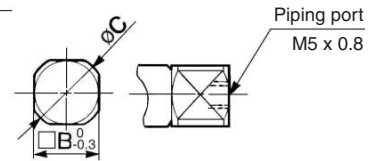
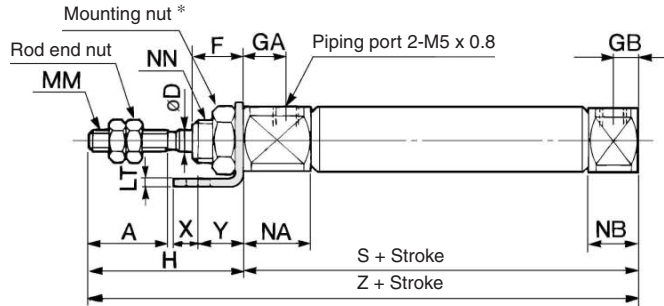
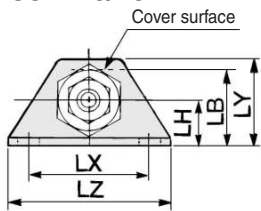
Axial Foot Style (L)

CJ2L **Bore size** **Stroke** **Port location on head cover**

CJ2L6

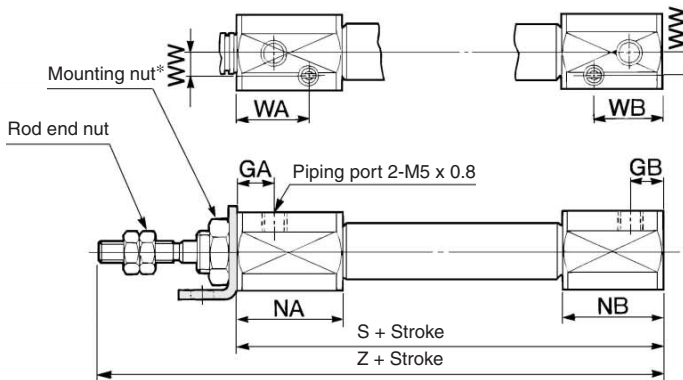
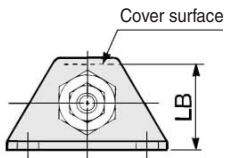


CJ2L10/16

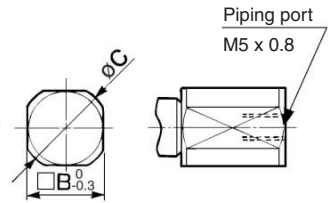


Port location on head cover:
Axial location (R)

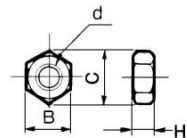
With air cushion: CJ2L **Bore size** **Stroke** **A** **Port location on head cover**



Port location on head cover:
Axial location (R)



Rod End Nut



Material: Iron

Part no.	Applicable bore (mm)	B	C	d	H
NTJ-006A	6	5.5	6.4	M3 x 0.5	2.4
NTJ-010A	10	7	8.1	M4 x 0.7	3.2
NTJ-015A	16	8	9.2	M5 x 0.8	4

* For details of the mounting nut, refer to page 6-3-11.

Bore size (mm)	A	B	C	D	F	GA	GB	H	LB	LC	LH	LT	LX	LY	LZ	MM	NA	NB	NN	S	T	X	Y	Z
6	15	12	14	3	8	14.5	—	28	15	4.5	9	1.6	24	16.5	32	M3 x 0.5	16	7	M6 x 1.0	49	3	5	7	77
10	15	12	14	4	8	8	5	28	15	4.5	9	1.6	24	16.5	32	M4 x 0.7	12.5	9.5	M8 x 1.0	46	—	5	7	74
16	15	18.3	20	5	8	8	5	28	23	5.5	14	2.3	33	25	42	M5 x 0.8	12.5	9.5	M10 x 1.0	47	—	6	9	75

With Air Cushion/Dimensions other than the table below are the same as the table above.

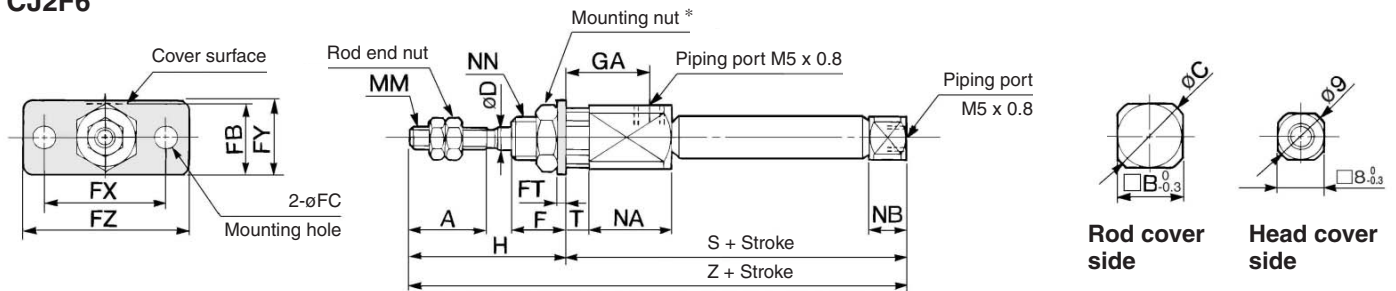
Bore size (mm)	B	C	GA	GB	LB	NA	NB	WA	WB	WW	S	Z
10	15	17	7.5	6.5	16.5	21	20	14.5	13.5	4.5	65	93
16	18.3	20	7.5	6.5	23	21	20	14.5	13.5	5.5	66	94

Air Cylinder: Standard Type Double Acting, Single Rod **Series CJ2**

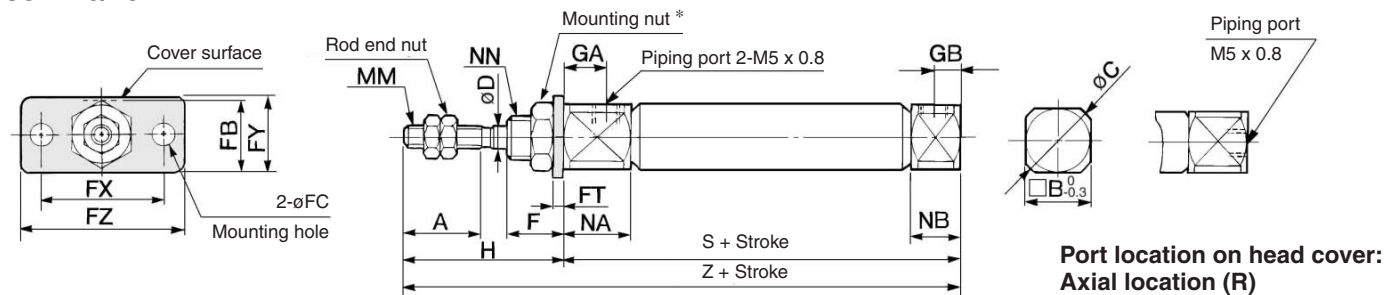
Rod Side Flange Style (F)

CJ2F Bore size Stroke Port location on head cover

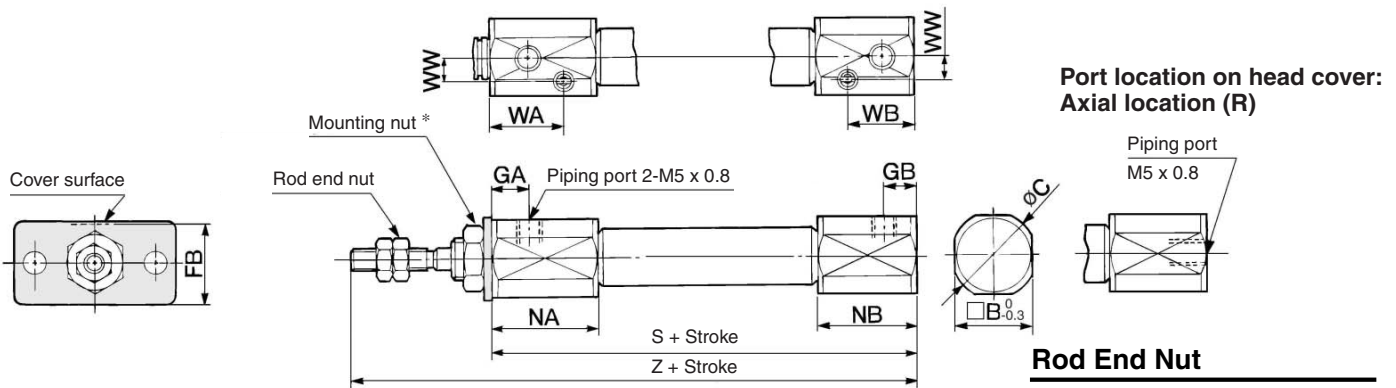
CJ2F6



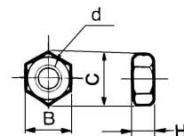
CJ2F10/16



With air cushion: CJ2F Bore size Stroke A Port location on head cover



Rod End Nut



Material: Iron

Part no.	Applicable bore (mm)	B	C	d	H
NTJ-006A	6	5.5	6.4	M3 x 0.5	2.4
NTJ-010A	10	7	8.1	M4 x 0.7	3.2
NTJ-015A	16	8	9.2	M5 x 0.8	4

* For details of the mounting nut, refer to page 6-3-11.

Bore size (mm)	A	B	C	D	F	FB	FC	FT	FX	FY	FZ	GA	GB	H	MM	NA	NB	NN	S	T	Z
6	15	12	14	3	8	13	4.5	1.6	24	14	32	14.5	—	28	M3 x 0.5	16	7	M6 x 1.0	49	3	77
10	15	12	14	4	8	13	4.5	1.6	24	14	32	8	5	28	M4 x 0.7	12.5	9.5	M8 x 1.0	46	—	74
16	15	18.3	20	5	8	19	5.5	2.3	33	20	42	8	5	28	M5 x 0.8	12.5	9.5	M10 x 1.0	47	—	75

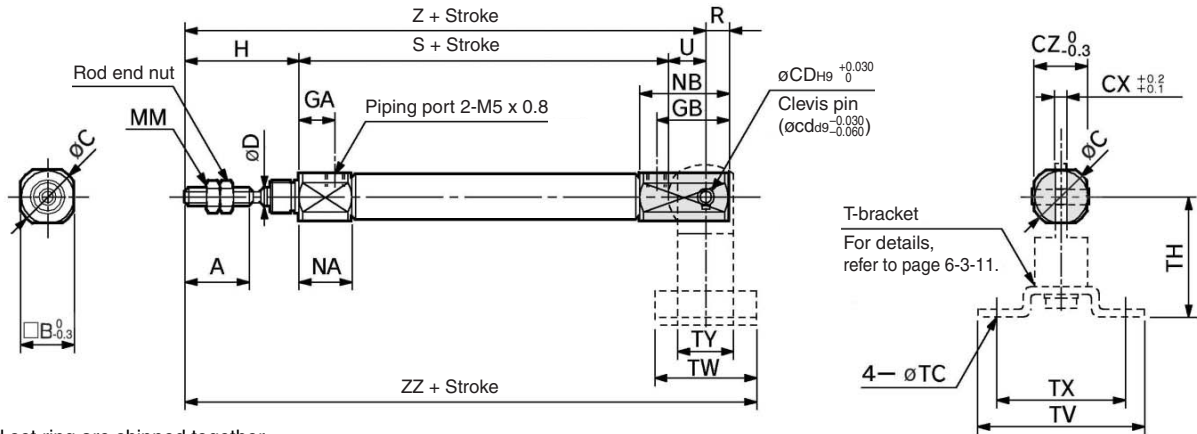
With Air Cushion/Dimensions other than the table below are the same as the table above.

Bore size (mm)	B	C	FB	GA	GB	NA	NB	WA	WB	WW	S	Z
10	15	17	14.5	7.5	6.5	21	20	14.5	13.5	4.5	65	93
16	18.3	20	19	7.5	6.5	21	20	14.5	13.5	5.5	66	94

Series CJ2

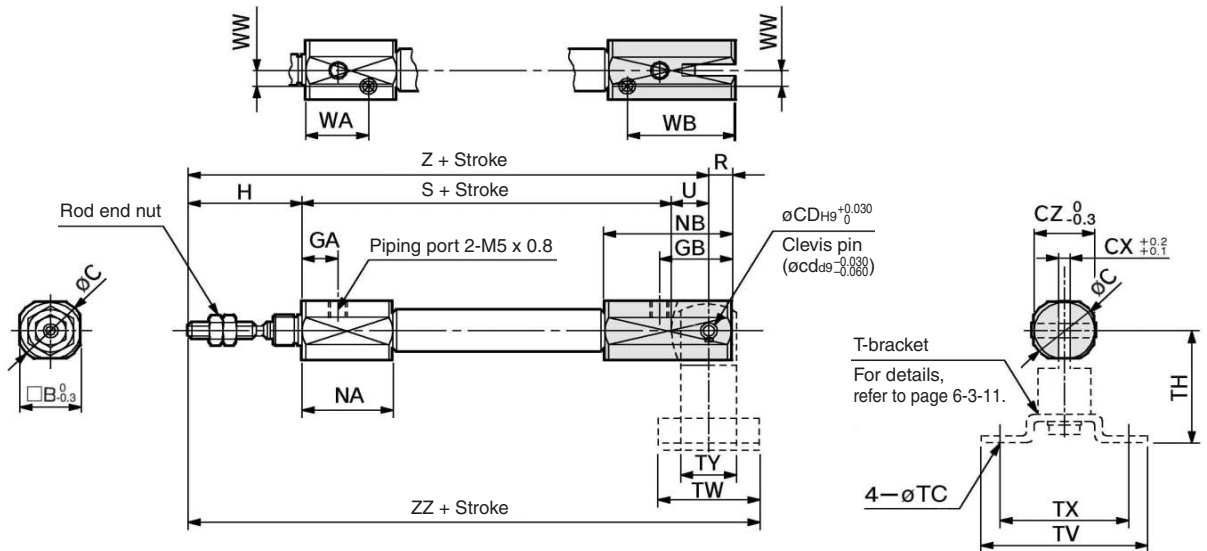
Double Clevis Style (D)

CJ2D Bore size Stroke



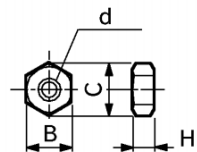
* Clevis pin and set ring are shipped together.

With air cushion: CJ2D Bore size Stroke A



* Clevis pin and set ring are shipped together.

Rod End Nut



Material: Iron

Part no.	Applicable bore (mm)	B	C	d	H
NTJ-010A	10	7	8.1	M4 x 0.7	3.2
NTJ-015A	16	8	9.2	M5 x 0.8	4

Bore size (mm)	A	B	C	CD (cd)	CX	CZ	D	GA	GB	H	MM	NA	NB	R	S	U	Z	ZZ
10	15	12	14	3.3	3.2	12	4	8	18	28	M4 x 0.7	12.5	22.5	5	46	8	82	93
16	15	18.3	20	5	6.5	18.3	5	8	23	28	M5 x 0.8	12.5	27.5	8	47	10	85	99

T-bracket Dimensions

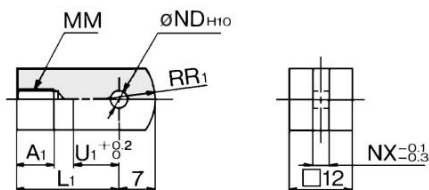
Bore size (mm)	TC	TH	TV	TW	TX	TY
10	4.5	29	40	22	32	12
16	5.5	35	48	28	38	16

With Air Cushion/Dimensions other than the table below are the same as the table above.

Bore size (mm)	B	C	CZ	GA	GB	NA	NB	S	WA	WB	WW	Z	ZZ
10	15	17	15	7.5	19.5	21	33	65	14.5	26.5	4.5	101	112
16	18.3	20	18.3	7.5	24.5	21	38	66	14.5	31.5	5.5	104	118

Accessory Bracket Dimensions

Single Knuckle Joint

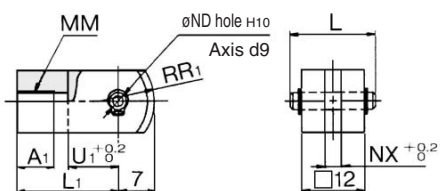


Material: Rolled steel

Part no.	Applicable bore (mm)	A ₁	L ₁	MM	ND ^{H10}	NX	R ₁	U ₁
I-J010B	10	8	21	M4 x 0.7	3.3 $^{+0.048}_0$	3.1	8	9
I-J016B	16	8	25	M5 x 0.8	5.3 $^{+0.048}_0$	6.4	12	14

Double Knuckle Joint

* Knuckle pin and set ring are shipped together.

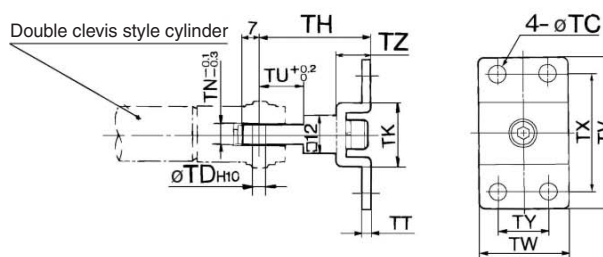


Material: Rolled steel

Part no.	Applicable bore (mm)	A ₁	L	L ₁	MM
Y-J010B	10	8	15.2	21	M4 x 0.7
Y-J016B	16	11	16.6	21	M5 x 0.8

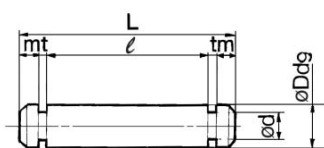
Part no.	ND _{d9}	ND ^{H10}	NX	R ₁	U ₁
Y-J010B	3.3 $^{+0.030}_0$	3.3 $^{+0.048}_0$	3.2	8	10
Y-J016B	5.3 $^{+0.030}_0$	5.3 $^{+0.048}_0$	6.5	12	10

T-bracket



Part no.	Applicable bore (mm)	TC	TD ^{H10}	TH	TK	TN	TT	TU	TV	TW	TX	TY	TZ
CJ-T010B	10	4.5	3.3 $^{+0.048}_0$	29	18	3.1	2	9	40	22	32	12	8
CJ-T016B	16	5.5	5 $^{+0.048}_0$	35	20	6.4	2.3	14	48	28	38	16	10

Clevis Pin

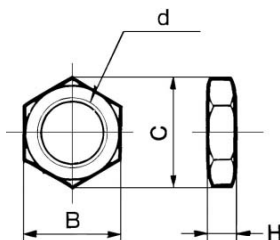


Material: Stainless steel

Part no.	Applicable bore (mm)	Dd ₉	d	L	ℓ	m	t	Applicable snap ring
CD-J010	10	3.3 $^{+0.030}_0$	3	15.2	12.2	1.2	0.3	Type C 3.2
CD-Z015	16	5.3 $^{+0.030}_0$	4.8	22.7	18.3	1.5	0.7	Type C 5
CD-JA010*	10	3.3 $^{+0.030}_0$	3	18.2	15.2	1.2	0.3	Type C 3.2

* For ø10 double clevis style, with air cushion and built-in speed controller.

Mounting Nut

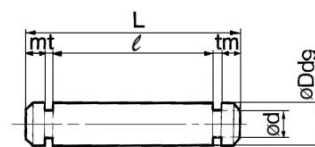


Material: Brass

Part no.	Applicable bore (mm)	B	C	d	H
SNJ-006B	6	8	9.2	M6 x 1.0	4
SNJ-010B	10	11	12.7	M8 x 1.0	4
SNJ-016B	16	14	16.2	M10 x 1.0	4
SNKJ-016B*	16	17	19.6	M12 x 1.0	4

* For ø16 non-rotating type. (Use SNJ-016B for ø10 non-rotating type.)

Knuckle Pin

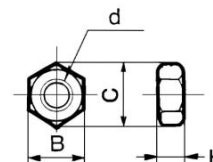


Material: Stainless steel

Part no.	Applicable bore (mm)	Dd ₉	d	L	ℓ	m	t	Applicable snap ring
CD-J010	10	3.3 $^{+0.030}_0$	3	15.2	12.2	1.2	0.3	Type C 3.2
IY-J015	16	5.3 $^{+0.030}_0$	4.8	16.6	12.2	1.5	0.7	Type C 5

* For size ø10, clevis pin is diverted.

Rod End Nut



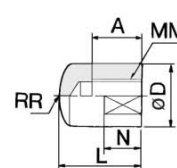
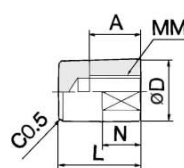
Material: Iron

Part no.	Applicable bore (mm)	B	C	d	H
NTJ-006A	6	5.5	6.4	M3 x 0.5	2.4
NTJ-010A	10	7	8.1	M4 x 0.7	3.2
NTJ-015A	16	8	9.2	M5 x 0.8	4

Rod End Cap

Flat type/CJ-CF□□□

Round type/CJ-CR□□□



Material: Polyacetal

Part no.		Applicable bore (mm)	A	D	L	MM	N	R	W
Flat type	Round type								
CJ-CF006	CJ-CR006	6	6	8	11	M3 x 0.5	5	8	6
CJ-CF010	CJ-CR010	10	8	10	13	M4 x 0.7	6	10	8
CJ-CF016	CJ-CR016	16	10	12	15	M5 x 0.8	7	12	10

- CJ1
- CJP
- CJ2**
- CM2
- CG1
- MB
- MB1
- CA2
- CS1
- C76
- C85
- C95
- CP95
- NCM
- NCA
- D-
- X
- 20-
- Data