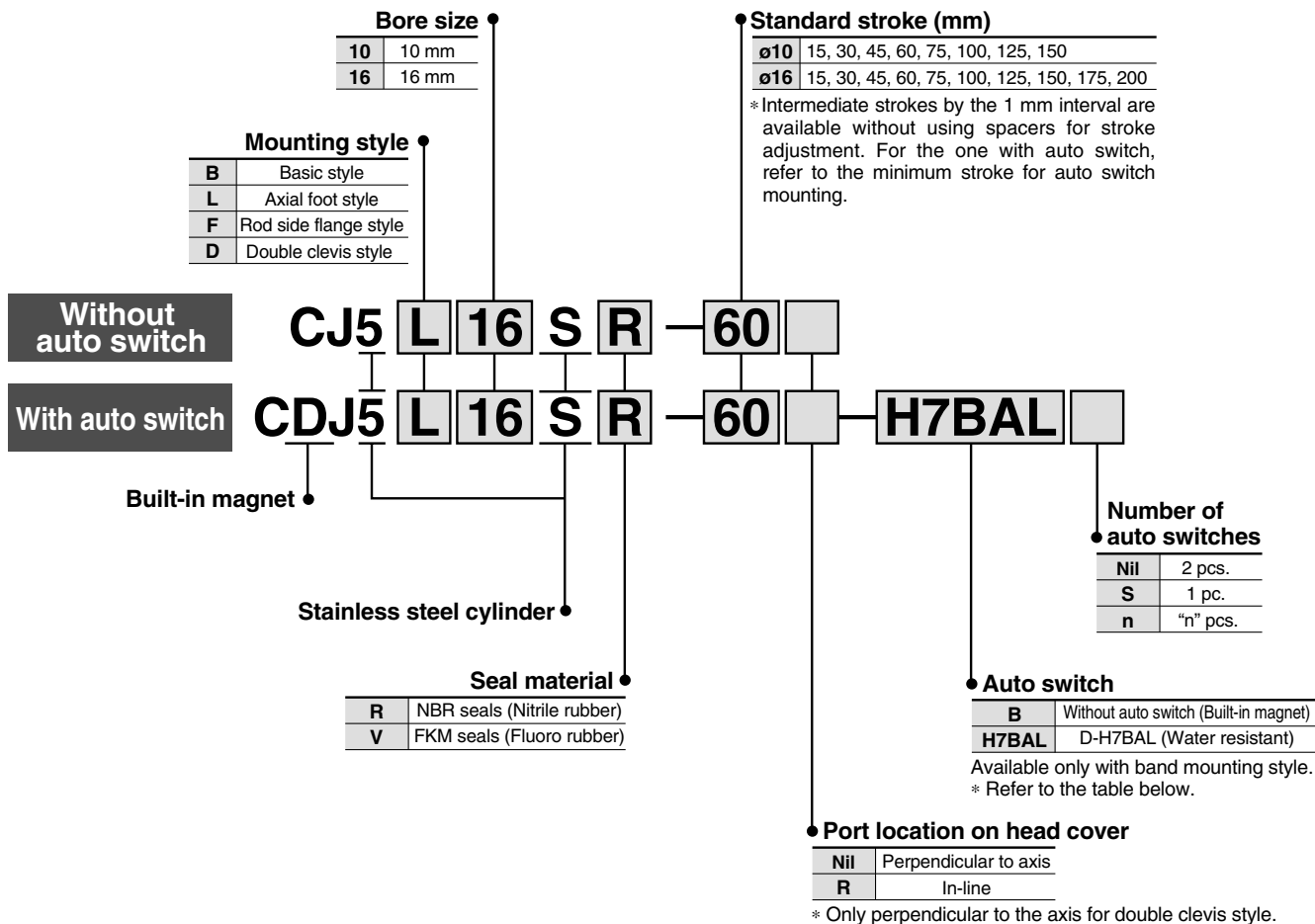


# Stainless Steel Cylinder

## Series CJ5-S

ø10, ø16

### How to Order



**Applicable Auto Switch**/Refer to page 10-20-1 for further information on auto switches.

Type	Special function	Electrical entry	Indicator light	Wiring (Output)	Load voltage		Auto switch model	Lead wire length (m)*		Pre-wire connector	Applicable load
					DC			3 (L)	5 (Z)		
Solid state switch	Water resistant (2-color indication)	Grommet	Yes	2-wire	24 V	12 V	H7BA	●	○	○	Relay, PLC

\* Lead wire length symbols: 3 m.....L (Example) H7BAL  
5 m.....Z (Example) H7BAZ

\* Solid state switches marked with "○" are produced upon receipt of order.

• For details about auto switches with pre-wire connector, refer to page 10-20-66.

### Auto Switch Mounting Bracket Part No.

Bore size (mm)	Auto switch mounting bracket no.	Note
10	BJ2-010S	With mounting screws made of stainless steel
16	BJ2-016S	

### Mounting Bracket Part No.

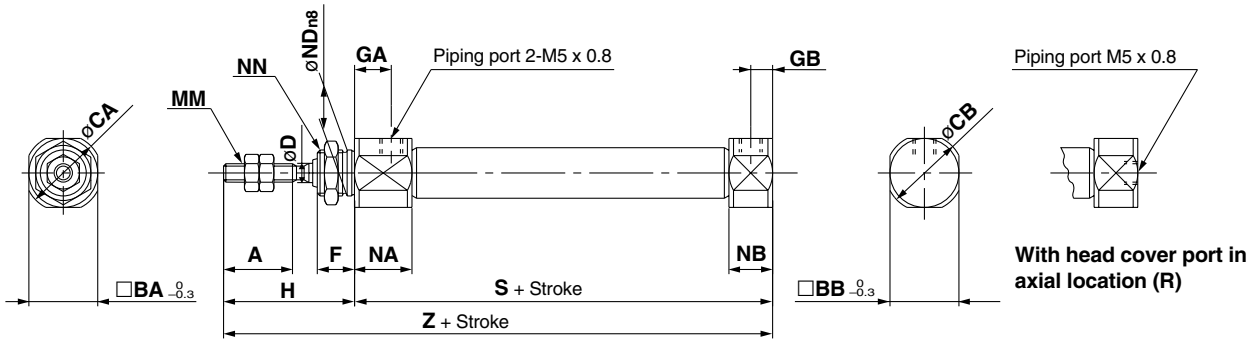
Mounting bracket	Bore size (mm)	
	10	16
Foot	CJ-L016SUS	CJK-L016SUS
Flange	CJ-F016SUS	CJK-F016SUS
T-bracket *	CJ-T010SUS	CJ-T016SUS

\* T-bracket is applicable to the double clevis style (D).

Grease pack for stainless steel cylinders/Part no.: GR-R-010 (10 g)

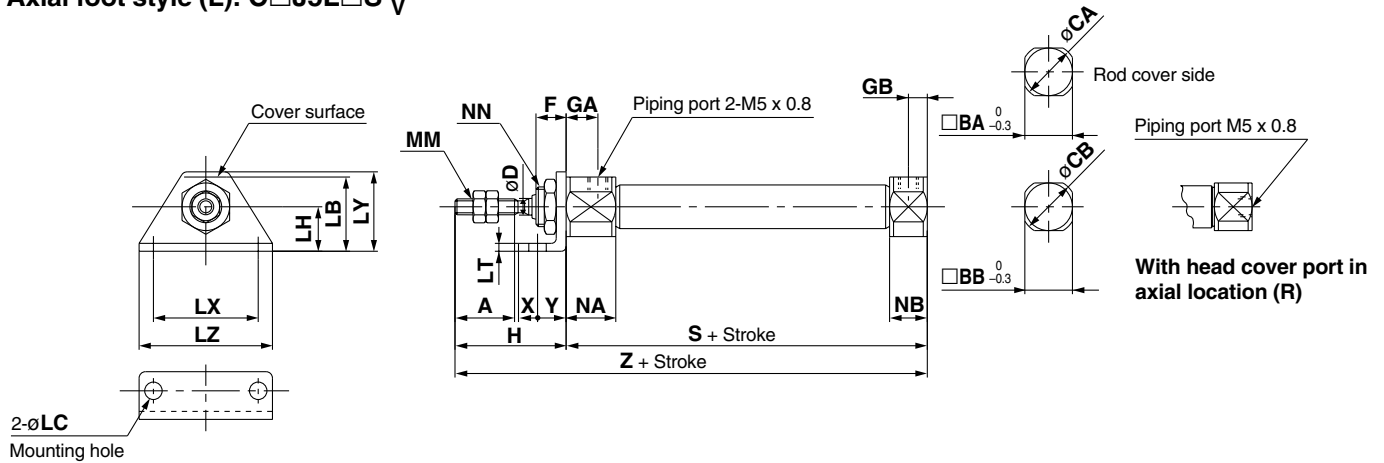
## Dimensions

Basic style (B): C□J5B□S<sup>R</sup><sub>V</sub>



Bore size (mm)	A	BA	BB	CA	CB	D	F	GA	GB	H	MM	NN	NA	NB	NDn8	S	Z
10	15	15	12	17	14	4	8	8	5	28	M4 x 0.7	M10 x 1.0	12.5	9.5	10 <sup>0</sup> <sub>-0.022</sub>	46	74
16	15	18.3	18.3	20	20	5	8	8	5	28	M5 x 0.8	M12 x 1.0	12.5	9.5	12 <sup>0</sup> <sub>-0.027</sub>	47	75

Axial foot style (L): C□J5L□S<sup>R</sup><sub>V</sub>



Bore size (mm)	A	BA	BB	CA	CB	D	F	GA	GB	H	LB	LC	LH	LT	LX	LY	LZ	MM	NN	NA	NB	S	X	Y	Z
10	15	15	12	17	14	4	8	8	5	28	21.5	5.5	14	2.5	33	25	42	M4 x 0.7	M10 x 1.0	12.5	9.5	46	6	9	74
16	15	18.3	18.3	20	20	5	8	8	5	28	23	5.5	14	2.5	33	25	42	M5 x 0.8	M12 x 1.0	12.5	9.5	47	6	9	75

RE<sup>A</sup><sub>B</sub>

REC

C□X

C□Y

MQ<sup>Q</sup><sub>M</sub>

RHC

MK(2)

RS<sup>Q</sup><sub>G</sub>

RS<sup>H</sup><sub>A</sub>

RZQ

MI<sup>W</sup><sub>S</sub>

CEP1

CE1

CE2

ML2B

C<sup>5</sup><sub>5</sub>-S

CV

MVGQ

CC

RB

J

D-

-X

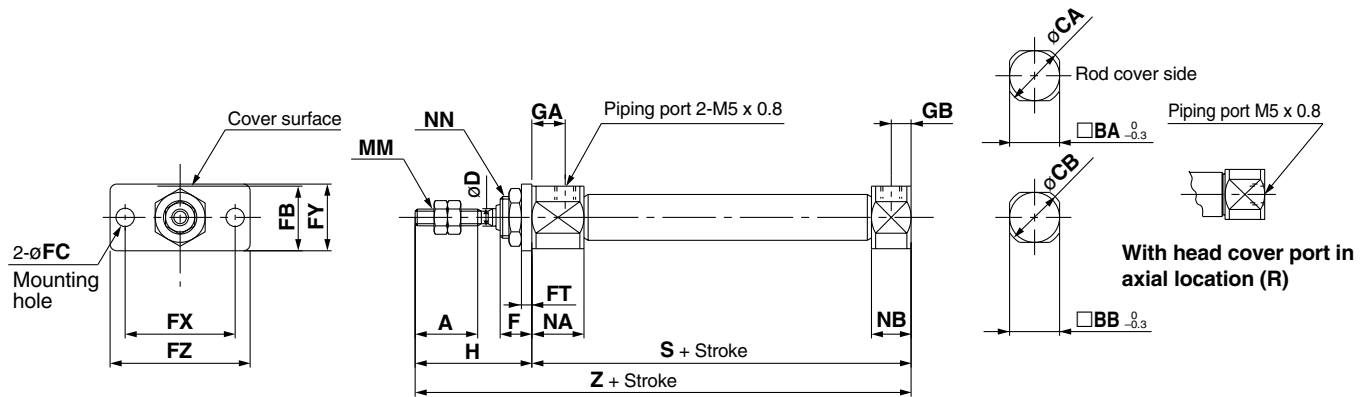
20-

Data

# Series CJ5-S

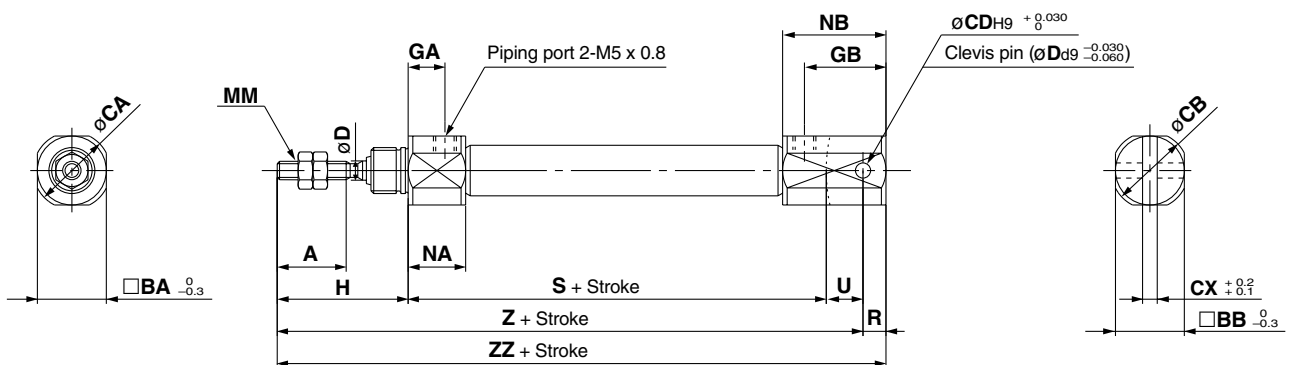
## Dimensions

Rod side flange style (F): C□J5F□S<sup>R</sup><sub>V</sub>



Bore size (mm)	A	BA	BB	CA	CB	D	F	FB	FC	FT	FX	FY	FZ	GA	GB	H	MM	NN	NA	NB	S	Z
10	15	15	12	17	14	4	8	17.5	5.5	2.5	33	20	42	8	5	28	M4 x 0.7	M10 x 1.0	12.5	9.5	46	74
16	15	18.3	18.3	20	20	5	8	19	5.5	2.5	33	20	42	8	5	28	M5 x 0.8	M12 x 1.0	12.5	9.5	47	75

Double clevis style (D): C□J5D□S<sup>R</sup><sub>V</sub>

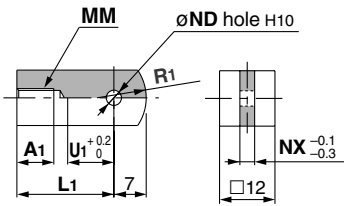


Bore size (mm)	A	BA	BB	CA	CB	CD (Cd)	CX	D	GA	GB	H	MM	NA	NB	R	S	U	Z	ZZ
10	15	15	12	17	14	3.3	3.2	4	8	18	28	M4 x 0.7	12.5	22.5	5	46	8	82	87
16	15	18.3	18.3	20	20	5	6.5	5	8	23	28	M5 x 0.8	12.5	27.5	8	47	10	85	93

\* Clevis pin and snap ring are shipped together.

## Accessory Dimensions

### Single Knuckle Joint

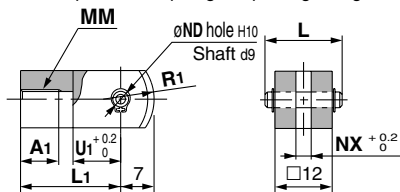


Material: Stainless steel 304

Part no.	Applicable bore size (mm)	A1	L1	MM	NDH10	NX	R1	U1
I-J010SUS	10	8	21	M4 x 0.7	3.3 <sup>+0.048</sup> <sub>0</sub>	3.1	8	9
I-J016SUS	16	8	25	M5 x 0.8	5 <sup>+0.048</sup> <sub>0</sub>	6.4	12	14

### Double Knuckle Joint

\* Knuckle pin and snap ring are packaged together.

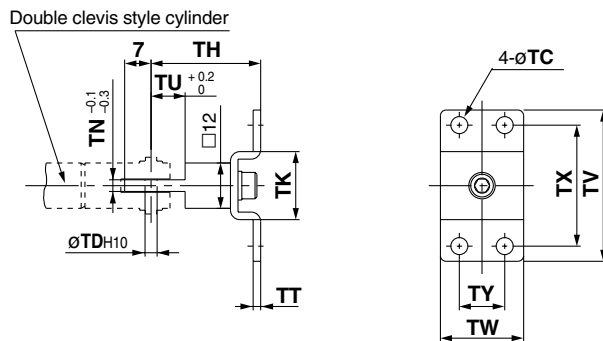


Material: Stainless steel 304

Part no.	Applicable bore size (mm)	A1	L	L1	MM	NDd9
Y-J010SUS	10	8	15.2	21	M4 x 0.7	3.3 <sup>-0.030</sup> <sub>-0.060</sub>
Y-J016SUS	16	11	16.6	21	M5 x 0.8	5 <sup>-0.030</sup> <sub>-0.060</sub>

Part no.	NDH10	NX	R1	U1
Y-J010SUS	3.3 <sup>+0.048</sup> <sub>0</sub>	3.2	8	10
Y-J016SUS	5 <sup>+0.048</sup> <sub>0</sub>	6.5	12	10

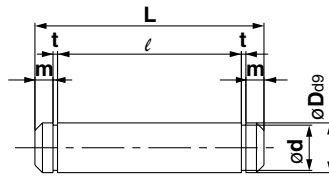
### T-bracket



Material: Stainless steel 304

Part no.	Applicable bore size (mm)	TC	TDH10	TH	TK	TN	TT	TU	TV	TW	TX	TY
CJ-T010SUS	10	4.5	3.3 <sup>+0.048</sup> <sub>0</sub>	29	18	3.1	2	9	40	22	32	12
CJ-T016SUS	16	5.5	5 <sup>+0.048</sup> <sub>0</sub>	35	20	6.4	2.5	14	48	28	38	16

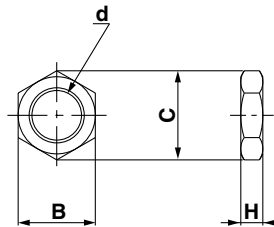
### Clevis Pin



Material: Pin and snap ring both stainless steel 304

Part no.	Applicable bore size (mm)	Dd9	d	L	l	m	t	Applicable snap ring
CD-J010	10	3.3 <sup>-0.030</sup> <sub>-0.060</sub>	3	15.2	12.2	1.2	0.3	Type C 3.2
CD-Z015SUS	16	5 <sup>-0.030</sup> <sub>-0.060</sub>	4.8	22.7	18.3	1.5	0.7	Type C 5

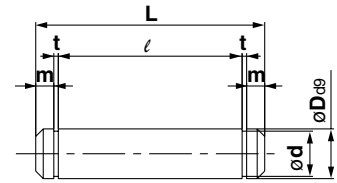
### Mounting Nut



Material: Stainless steel 304

Part no.	Applicable bore size (mm)	B	C	d	H
SNJ-016SUS	10	14	16.2	M10 x 1.0	4
SNKJ-016SUS	16	17	19.6	M12 x 1.0	4

### Knuckle Pin

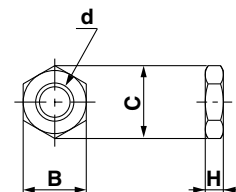


Material: Pin and snap ring both stainless steel 304

Part no.	Applicable bore size (mm)	Dd9	d	L	l	m	t	Applicable snap ring
CD-J010	10	3.3 <sup>-0.030</sup> <sub>-0.060</sub>	3	15.2	12.2	1.2	0.3	Type C 3.2
IY-J015SUS	16	5 <sup>-0.030</sup> <sub>-0.060</sub>	4.8	16.6	12.2	1.5	0.7	Type C 5

\* Clevis pin is used instead for ø10.

### Rod End Nut

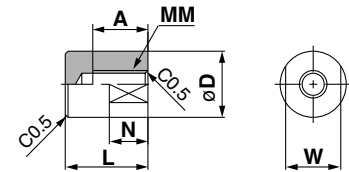


Material: Stainless steel 304

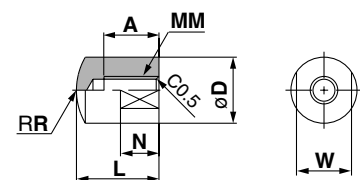
Part no.	Applicable bore size (mm)	B	C	d	H
NTJ-010SUS	10	7	8.1	M4 x 0.7	3.2
NTJ-015SUS	16	8	9.2	M5 x 0.8	4

### Rod End Cap

Flat type/CJ-CF□□□



Round type/CJ-CR□□□



Material: Polyacetal

Part no.	Applicable bore size (mm)	A	D	L	MM	N	R	W	
Flat type	Round type								
CJ-CF010	CJ-CR010	10	8	10	13	M4 x 0.7	6	10	8
CJ-CF016	CJ-CR016	16	10	12	15	M5 x 0.8	7	12	10

RE<sup>A</sup><sub>B</sub>

REC

C□X

C□Y

MQ<sup>Q</sup><sub>M</sub>

RHC

MK(2)

RS<sup>Q</sup><sub>G</sub>

RS<sup>H</sup><sub>A</sub>

RZQ

MI<sup>W</sup><sub>S</sub>

CEP1

CE1

CE2

ML2B

C<sub>5</sub>-S

CV

MVGQ

CC

RB

J

D-

-X

20-

Data