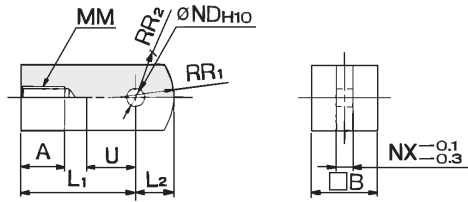


# Series CJP2

## Accessory Bracket Dimensions

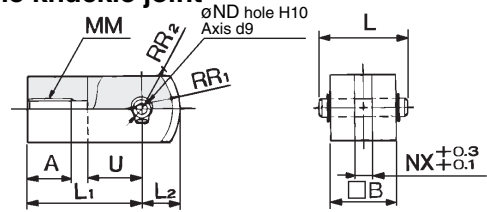
### Single knuckle joint



Material: Rolled steel

Part no.	Applicable bore size (mm)	A	B	L <sub>1</sub>	L <sub>2</sub>	MM	ND <sub>H10</sub>	NX	R <sub>1</sub>	R <sub>2</sub>	U
I-P006A	6	5	6	12	3.5	M3 x 0.5	3 <sup>+0.040</sup> <sub>0</sub>	3	5	4	5
I-P010A	10	6.5	10	16	5.5	M4 x 0.7	5 <sup>+0.048</sup> <sub>0</sub>	5	8	6.3	7
I-P016A	16	7	12	19	7	M5 x 0.8	6 <sup>+0.048</sup> <sub>0</sub>	6	10	7.8	9

### Double knuckle joint

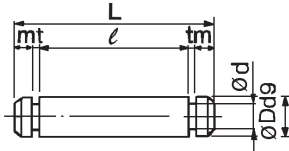


Material: Rolled steel

Part no.	Applicable bore size (mm)	A	B	L	L <sub>1</sub>	L <sub>2</sub>	MM	ND <sub>d9</sub>	ND <sub>H10</sub>	NX	R <sub>1</sub>	R <sub>2</sub>	U
Y-P006A	6	5	6	9	12	3.5	M3 x 0.5	3 <sup>-0.020</sup> <sub>-0.045</sub>	3 <sup>+0.040</sup> <sub>0</sub>	3	5	4	5
Y-P010A	10	6.5	10	13.6	16	5.5	M4 x 0.7	5 <sup>-0.030</sup> <sub>-0.060</sub>	5 <sup>+0.048</sup> <sub>0</sub>	5	8	6.3	7
Y-P016A	16	7	12	15.8	19	7	M5 x 0.8	6 <sup>-0.030</sup> <sub>-0.060</sub>	6 <sup>+0.048</sup> <sub>0</sub>	6	10	7.8	9

\* Knuckle pin and retaining ring are included.

### Knuckle pin

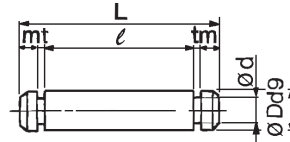


Material: Stainless steel

Part no.	Applicable bore size (mm)	D d9	L	d	ℓ	m	t	Retaining* ring
IY-P006	6	3 <sup>-0.020</sup> <sub>-0.045</sub>	9	2.85	6.2	0.75	0.65	Clip C-type 3
IY-P010	10	5 <sup>-0.030</sup> <sub>-0.060</sub>	13.6	4.8	10.2	1	0.7	C-type 5
IY-P015	16	6 <sup>-0.030</sup> <sub>-0.060</sub>	15.8	5.7	12.2	1	0.8	C-type 6

\* Included

### Trunnion pin

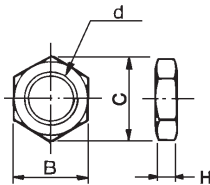


Material: Stainless steel

Part no.	Applicable bore size (mm)	D d9	L	d	ℓ	m	t	Retaining* ring
CT-P006	6	3 <sup>-0.020</sup> <sub>-0.045</sub>	20.4	2.85	17.6	0.75	0.65	Clip C-type 3
CT-P010	10	5 <sup>-0.030</sup> <sub>-0.060</sub>	23.9	4.8	20.5	1	0.7	C-type 5
CT-P015	16	6 <sup>-0.030</sup> <sub>-0.060</sub>	31.7	5.7	28.1	1	0.8	C-type 6

\* Included

### Mounting nut

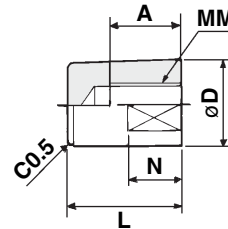


Material: Brass

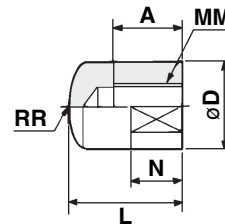
Part no.	Applicable bore size (mm)	d	H	B	C
SNPS-004	4	M8 x 1.0	3	10	11.5
SNP-006	6	M10 x 1.0	3	14	16.2
SNP-010	10	M12 x 1.0	3	17	19.6
SNP-015	16	M14 x 1.0	4	19	21.9

### Rod end cap

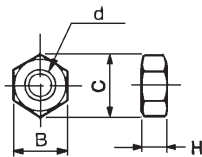
Flat type: CJ-CF□□□



Round type: CJ-CR□□□



### Rod end nut



Material: Iron

Part no.	Applicable bore size (mm)	d	H	B	C
NTJ-004	4	M2 x 0.4	1.6	4	4.6
NTP-006	6	M3 x 0.5	1.8	5.5	6.4
NTP-010	10	M4 x 0.7	2.4	7	8.1
NTP-015	16	M5 x 0.8	3.2	8	9.2

Material: Polyacetal

Part no.		Applicable bore size (mm)	A	D	L	MM	N	RR	W
Flat type	Round type								
CJ-CF004	CJ-CR004	4	5	6	9	M2 x 0.4	3	6	5
CJ-CF006	CJ-CR006	6	6	8	11	M3 x 0.5	5	8	6
CJ-CF010	CJ-CR010	10	8	10	13	M4 x 0.7	6	10	8
CJ-CF016	CJ-CR016	16	10	12	15	M5 x 0.8	7	12	10