

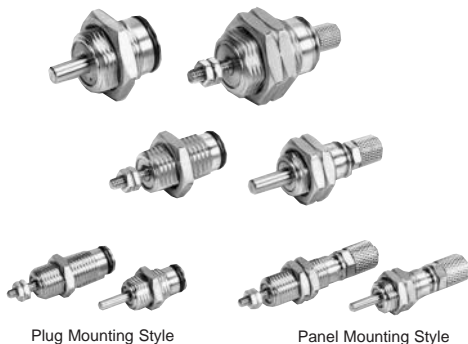
Pin Cylinder/Single Acting Spring Return

Series CJP

ø6, ø10, ø15

A short stroke miniature cylinder with a shorter overall length.

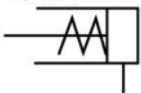
The installation space can be significantly reduced because this cylinder can be recessed directly into a machine body or installed on a panel. Thus, the machines can be made more compact.



Plug Mounting Style

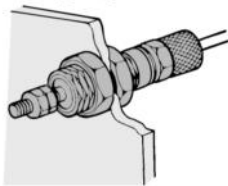
Panel Mounting Style

Symbol

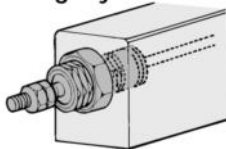


Mounting Style

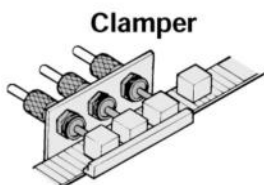
Panel Mounting Style



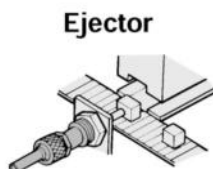
Plug Mounting Style



Application Examples



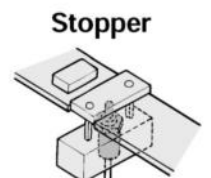
Clamper



Ejector

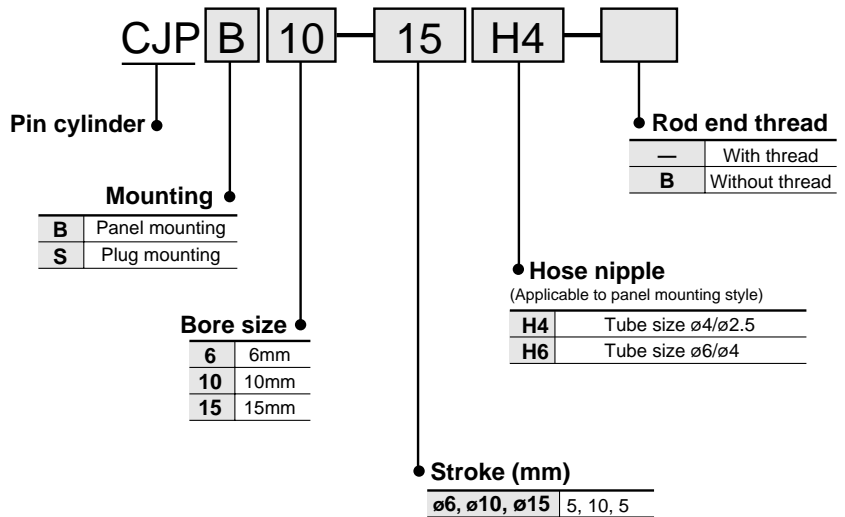


Gripper



Stopper

How to Order



Specifications

Action	Single acting spring return	
Max. operating pressure	0.7MPa	
Min. operating pressure	ø6	0.2MPa
	ø10, ø15	0.15MPa
Proof pressure	1.05MPa	
Ambient and fluid temperature	-10 to 70°C (Non-freezing)	
Lubrication	Not required	
Operating piston speed	50 to 500mm/s	
Cushion	None	
Stroke tolerance	+1.0 0	
Thread tolerance	JIS 2 class	
Rod end thread	With thread/Without thread	
Mounting method	Panel mounting	Plug mounting
	Mounting nut (2)	Mounting nut (1)
Standard accessories	Hose nipple (1)	Gasket (1)
	Rod end nut (2)*	Rod end nut (2)*

* Provided to the model with rod end nut.

Pin Cylinder/Single Acting Spring Return *Series CJP*

Standard Strokes

Bore size (mm)	Stroke (mm)
6	5, 10, 15
10	5, 10, 15
15	5, 10, 15

Spring Retracting Force (N)

Bore size (mm)	Stroke (mm)	0 stroke	Stroke end
6	5, 10, 15	3.92	1.42
10	5, 10, 15	5.98	2.45
15	5, 10, 15	10.8	4.41

* Same spring force for each stroke.

Weight (g)

Model	Stroke (mm)		
	5	10	15
CJP□6	10.6	13.1	15.6
CJP□10	28	33	38
CJP□15	72	82	92

* Weight of hose nipple (4gf) is not included.

Hose Nipple For Panel Mount Style (With Fixed Orifice)

Applicable tubing	Model
ø4/ø2.5	CJ-5H-4
ø6/ø4	CJ-5H-6

Theoretical Force (N)

Bore size (mm)	Operating direction	Operating pressure (MPa)		
		0.3	0.5	0.7
6	OUT	4.56	10.2	15.9
	IN	1.42		
10	OUT	17.6	33.3	49.0
	IN	2.45		
15	OUT	42.2	77.5	113
	IN	4.41		

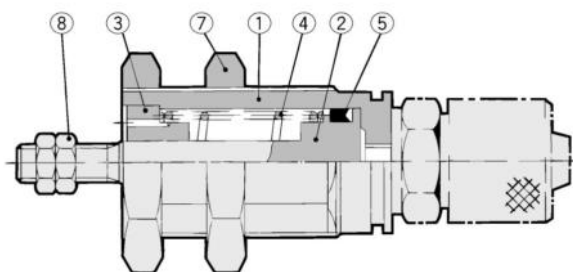


Precautions

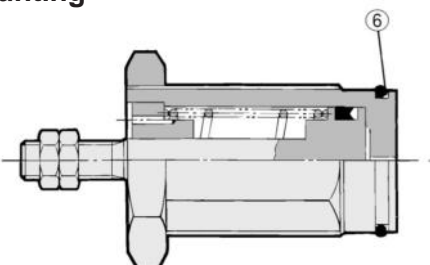
Be sure to read before handling.
Refer to p.0-39 to 0-46 for Safety
Instructions and common precautions.

Construction (Disassembly is not possible.)

Panel mounting



Plug mounting



Component Parts (Disassembly is not possible.)

No.	Description	Material	Note
①	Cover	Brass	Electroless nickel plated
②	Piston	Stainless steel	
③	Collar	Brass	
④	Return spring	Piano wire	Zinc chromate
⑤	Piston seal	NBR	
⑥	Gasket	NBR	Special product (O ring) Plug mounting only
⑦	Mounting nut	Brass	Electroless nickel plated
⑧	Rod end nut	Steel	Nickel plated

Provided Nut/Part No.

Description	Bore (mm)	6	10	15
Mounting nut		SNPS-006	SNPS-010	SNPS-015
Rod end nut		NTP-006	NTP-010	NTP-015

Piping

Caution

- Use a dedicated hose nipple. On the panel mounting style, use the CJ-5H-4 or CJ-5H-6, a dedicated hose nipple (with a fixed restriction) that is provided. If a different fitting must be used due to unavoidable circumstances, make sure to install a speed controller and use it by adjusting it to 500mm/s or less.

Mounting

Caution

- Do not operate in such a way that a load is applied to the piston rod during its retraction. The spring that is built into the cylinder provides only enough force to retract the piston rod. Thus, if a load is applied, the piston rod will not be able to retract to the end of the stroke.

CJ1

CJP

CJ2

CM2

C85

CG1

MB

C95

CA1

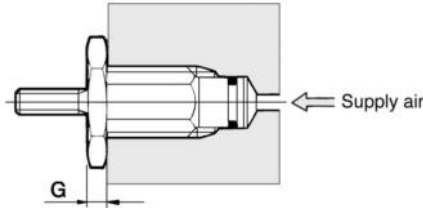
CS1

Series CJP

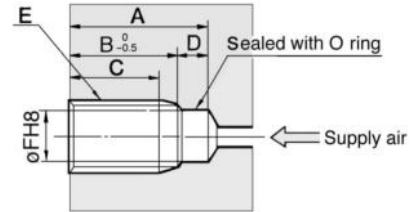


Recommended Mounting Hole Dimensions for Plug Mounting Style

When plug mounted



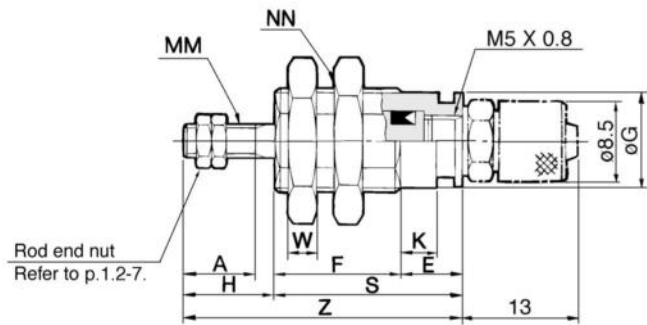
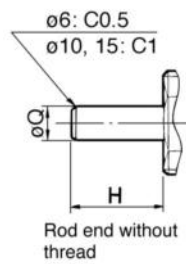
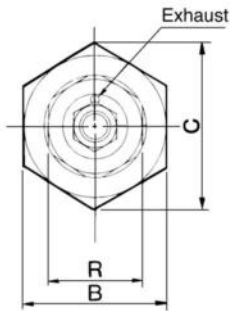
Machining dimensions for Mounting



Bore (mm)	Stroke	A	B	C	D	E	F	G
6	5	16	12.5	10	3.5	M10 X 1.0	8.5	3
	10	23	19.5	17				
	15	30	26.5	24				
10	5	17	13.5	10.5	3.5	M15 X 1.5	12	4
	10	23.5	20	17				
	15	30.5	27	24				
15	5	19	14.5	11.5	4.5	M22 X 1.5	19	5
	10	25	20.5	17.5				
	15	31.5	27	24				

Panel Mounting Style

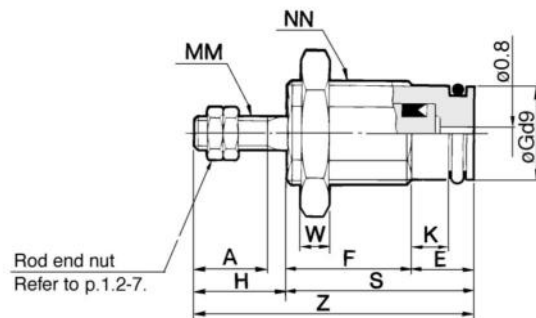
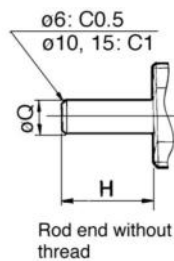
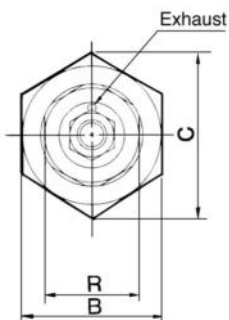
CJPB



Bore (mm)	A	B	C	E	F			G	H	K	MM	NN	R	S			W	Z			Q
					5 st	10 st	15 st							5 st	10 st	15 st		5 st	10 st	15 st	
6	7	12	13.9	6	12.5	19.5	26.5	8.5	9	3.5	M3 X 0.5	M10 X 1.0	9	18.5	25.5	32.5	3	27.5	34.5	41.5	3
10	10	19	22	6	14.5	21	28	12	12	3.5	M4 X 0.7	M15 X 1.5	13	20.5	27	34	4	32.5	39	46	5
15	12	27	31	7	16.5	22.5	29	19	14	4.2	M5 X 0.8	M22 X 1.5	20	23.5	29.5	36	5	37.5	43.5	50	6

Plug Mounting Style

CJPS



Bore (mm)	A	B	C	E	F			G	H	K	MM	NN	R	S			W	Z			Q
					5 st	10 st	15 st							5 st	10 st	15 st		5 st	10 st	15 st	
6	7	12	13.9	6	12.5	19.5	26.5	8.5	9	3.5	M3 X 0.5	M10 X 1.0	9	18.5	25.5	32.5	3	27.5	34.5	41.5	3
10	10	19	22	6	14.5	21	28	12	12	3.5	M4 X 0.7	M15 X 1.5	13	20.5	27	34	4	32.5	39	46	5
15	12	27	31	7	16.5	22.5	29	19	14	4.2	M5 X 0.8	M22 X 1.5	20	23.5	29.5	36	5	37.5	43.5	50	6

CJPB6.....SCJP6, #6
 CJPB10.....SCJP10, #6
 CJPB15.....SCJP15, #6