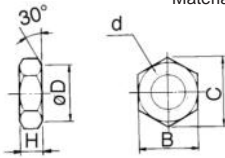


Standard: Double Acting Single Rod *Series CM2*

Rod End Nut (mm)

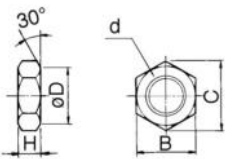
Material: Carbon steel



Part No.	Applicable bore size	B	C	D	d	H
NT-02	20	13	15.0	12.5	M8 X 1.25	5
NT-03	25/32	17	19.6	16.5	M10 X 1.25	6
NT-04	40	22	25.4	21.0	M14 X 1.5	8

Mounting Nut (mm)

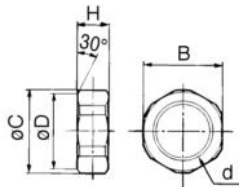
Material: Carbon steel



Part No.	Applicable bore size	B	C	D	d	H
SN-020B	20	26	30	25.5	M20 X 1.5	8
SN-032B	25/32	32	37	31.5	M26 X 1.5	8
SN-040B	40	41	47.3	40.5	M32 X 2.0	10

Trunnion Nut (mm)

Material: Carbon steel

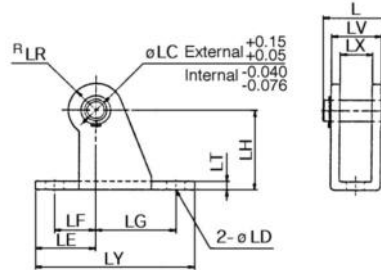


Part No.	Applicable bore size	B	C	D	d	H
TN-020B	20	26	28	25.5	M20 X 1.5	10
TN-032B	25/32	32	34	31.5	M26 X 1.5	10
TN-040B	40	41	45	40.5	M32 X 2	10

Pivot bracket for integrated clevis style CM2E: Please order it separately.

Pivot Bracket (mm)

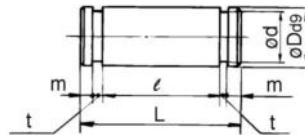
Material: Rolled steel



Part No.	Applicable bore size	L	LC	LD	LE	LF	LG	LH	LR	LT	LX	LY	LV	Applicable pin part No.
CM-E020B	20/25	24.5	8	6.8	22	15	30	30	10	3.2	12	59	18.4	CD-S02
CM-E032B	32/40	34	10	9	25	15	40	40	13	4	20	75	28	CD-S03

Clevis Pin (mm)

Material: Carbon steel



Part No.	Applicable bore size	Dø9	d	L	ℓ	m	t	Applicable snap ring part No.
CD-S02	20/25	8 ^{-0.040} / _{-0.076}	7.6	24.5	19.5	1.6	0.9	C8 type for pivot
CD-S03	32/40	10 ^{-0.040} / _{-0.076}	9.6	34	29	1.35	1.15	C10 type for pivot

CJ1

CJP

CJ2

CM2

C85

CG1

MB

C95

CA1

CS1