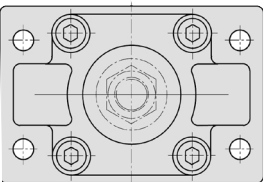
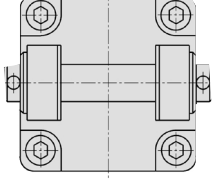
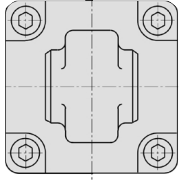
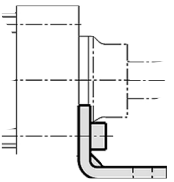
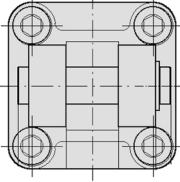
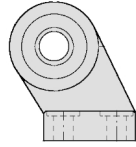
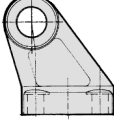


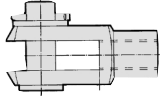
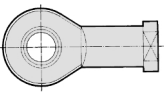
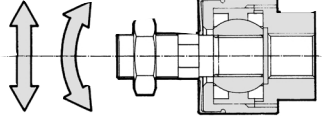
Series CP95

How to order mounting accessories

Mounting accessories, cylinders

Ø bore	F Front/rear flange	D Female rear clevis (corresponds to E accessories)	C Male rear clevis	
	 Supplied with 4 screws	 Supplied with bolt, safety device and 4 screws	 Supplied with 4 screws	
32 40 50 63 80 100	F5032 F5040 F5050 F5063 F5080 F5100 See page 10 for dimensions	D5032 D5040 D5050 D5063 D5080 D5100 See pages 10/11 for dimensions	<u>Plain</u> C5032 C5040 C5050 C5063 C5080 C5100 See pages 10/11 for dimensions <small>Note: See page 11 for male rear clevis with swivel CS50</small>	
Ø bore	L Foot	DS Female rear clevis (for ES accessory)	ES Angled rear clevis with ball joint	E Angled rear clevis
	 Supplied with two pieces			
32 40 50 63 80 100	L5032 L5040 L5050 L5063 L5080 L5100 See page 10 for dimensions	DS5032 DS5040 DS5050 DS5063 DS5080 DS5100 See page 12 for dim.	ES5032 ES5040 ES5050 ES5063 ES5080 ES5100 See page 12 for dim.	E5032 E5040 E5050 E5063 E5080 E5100 See page 11 for dimensions

Mounting accessories, rod

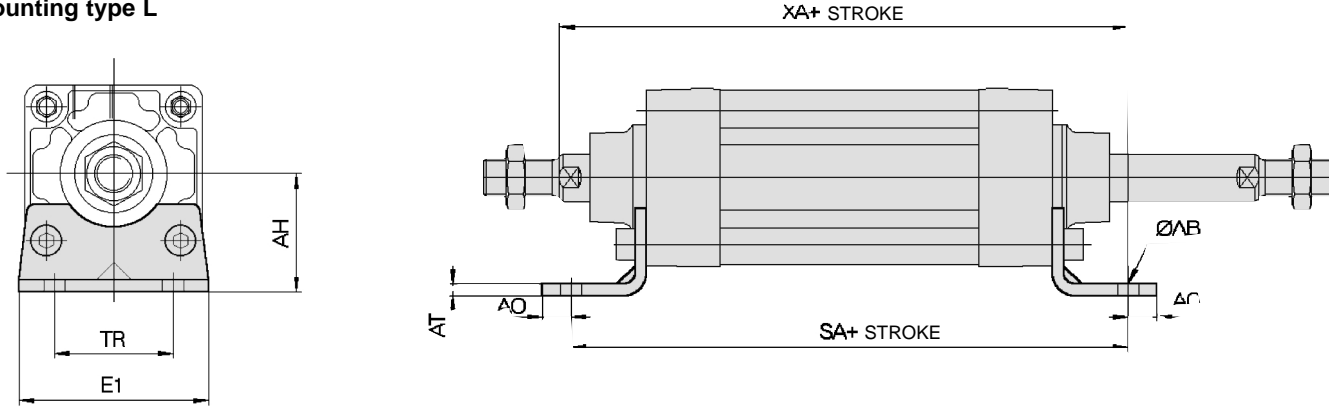
Ø bore	GKM Rod clevis DIN 71752	KJ Piston rod ball joint DIN 648	JA Floating joint
	 Supplied with bolts and safety devices		
32 40 50 63 80 100	GKM 10-20 GKM12-24 GKM16-32 GKM16-32 GKM20-40 GKM20-40 See page 18 for dimensions	KJ10 DM10X1.25 KJ12 D KJ16 D KJ16 D KJ20D KJ20D See page 18 for dimensions	JA30-10-125 JA40-12-125 JA50-16-150 JA50-16-150 JAH50-20-150 JAH50-20-150 See page 18 for dimensions

Series CP95

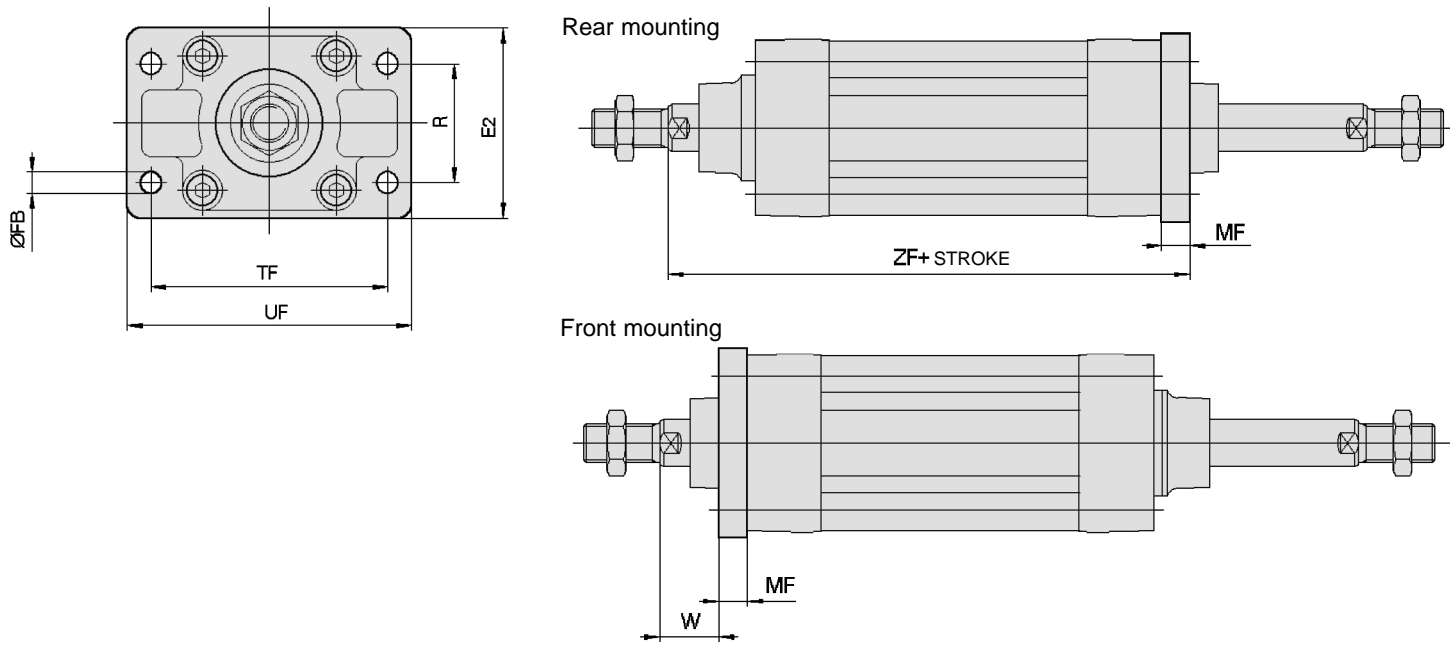
Dimensions – mounting accessories L, F, C and D

[mm]

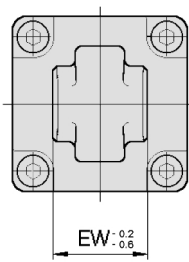
Mounting type L



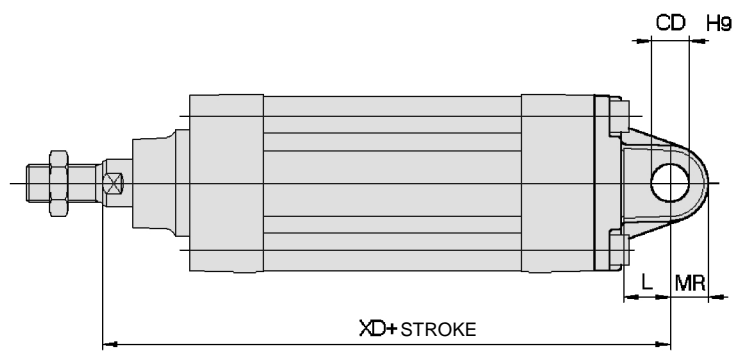
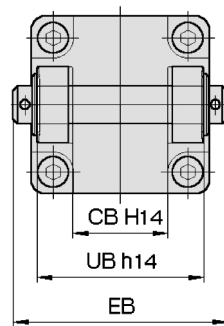
Mounting type F



Mounting type C



Mounting type D

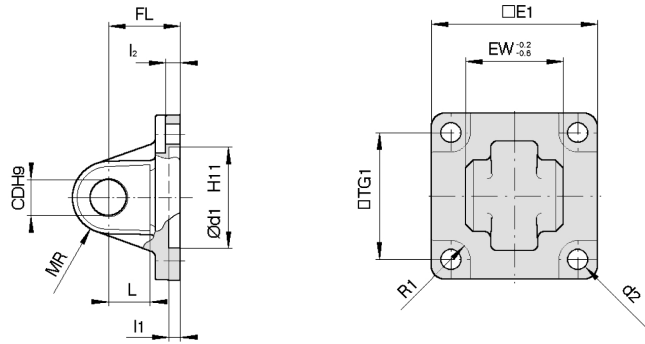


Ø Bore	E1	R	W	MF	ZF	ØFB	CD	EB	L	XD	UB	CB	EW	MR	TR	AO	AT	XA	SA	AH	ØAB	TF	UF	E2
32	48	32	16	10	130	7	10	65	12	142	45	26	26	9.5	32	10	4	144	142	32	7	64	79	50
40	55	36	20	10	145	9	12	75	15	160	52	28	28	12	36	11	4	163	161	36	9	72	90	55
50	68	45	25	12	155	9	12	80	15	170	60	32	32	12	45	12	5	175	170	45	9	90	110	70
63	80	50	25	12	170	9	16	90	20	190	70	40	40	16	50	12	5	190	185	50	9	100	120	80
80	100	63	30	16	190	12	16	110	20	210	90	50	50	16	63	14	6	215	210	63	12	126	153	100
100	120	75	35	16	205	14	20	140	25	230	110	60	60	20	75	16	6	230	220	71	14	150	178	120

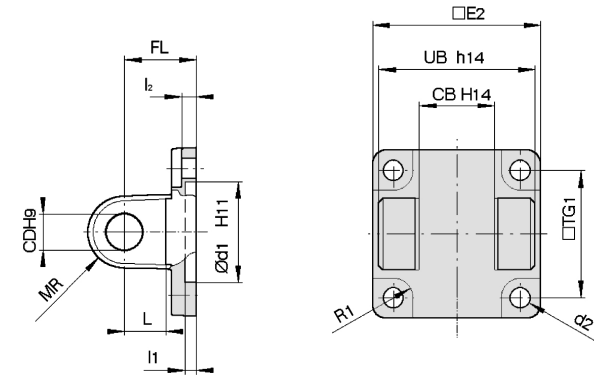
Dimensions – mounting accessories C, D, E and CS

[mm]

Mounting type C

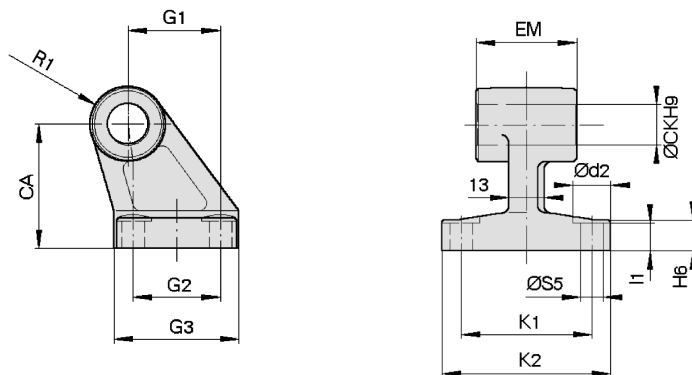


Mounting type D



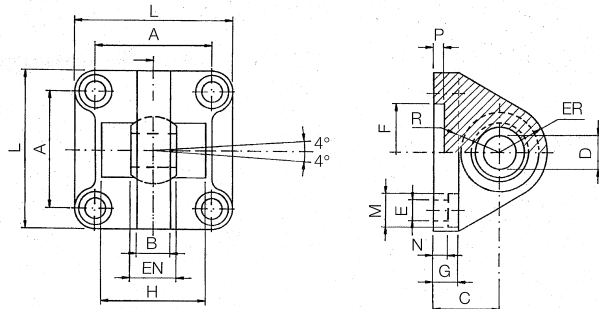
Ø Bore	E1	EW	TG1	FL	l ₁	L	l ₂	Ød1	CD	MR	d2	R1	E2	UB	CB
32	45	26	32.5	22	5	12	5.5	30	10	9.5	6.6	6.5	48	45	26
40	51	28	38	25	5	15	5.5	35	12	12	6.6	6.5	56	52	28
50	64	32	46.5	27	5	15	6.5	40	12	12	9	8.5	64	60	32
63	74	40	56.5	32	5	20	6.5	45	16	16	9	8.5	75	70	40
80	94	50	72	36	5	20	10	45	16	16	11	11	95	90	50
100	113	60	89	41	5	25	10	55	20	20	11	12	115	110	60

Mounting type E



Ø Bore	Ød2	ØCK	ØS5	K1	K2	I3	G1	l ₁	G2	EM	G3	CA	H6	R1
32	11	10	6.6	38	51	10	21	7	18	26	31	32	8	10
40	11	12	6.6	41	54	10	24	9	22	28	35	36	10	11
50	15	12	9	50	65	12	33	11	30	32	45	45	12	12
63	15	16	9	52	67	14	37	11	35	40	50	50	12	15
80	18	16	11	66	86	18	47	12.5	40	50	60	63	14	15
100	18	20	11	76	96	20	55	13.5	50	60	70	71	15	19

Mounting type CS Rear clevis with ball joint



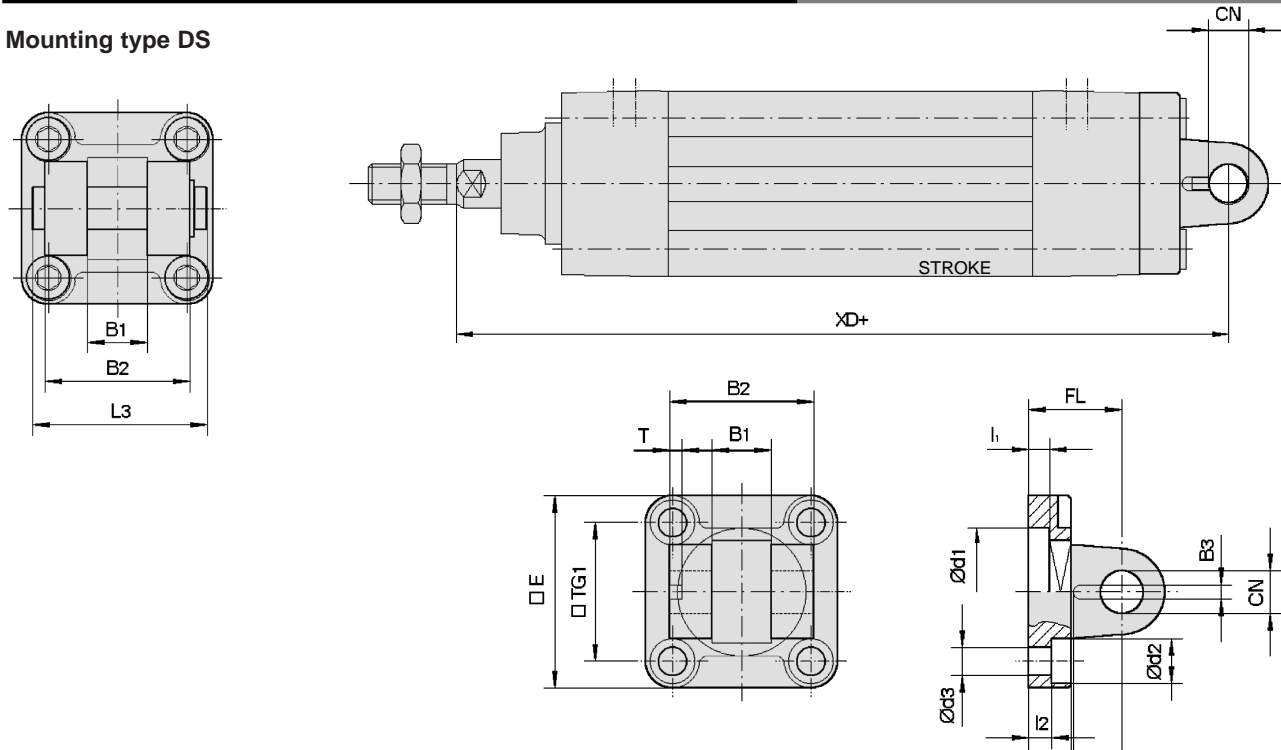
Ø	A	B	C	D	EN	ER	ØF	G	E	L	M	N	P	H	R
(mm)	±0.2	maxi	JS15H7	-0.1	maxi	H11	H13	H13	±0.5	±0.5	±0.5	±0.5	±0.5	±0.5	±0.5
32	32.5	10.5	22	10	14	15	30	10	6.6	45	10.5	5.5	5	-	-
40	38	12	25	12	16	18	35	10	6.6	55	11	5.5	5	-	-
50	46.5	15	27	16	21	20	40	10	9	65	15	6.5	5	51	19
63	56.5	15	32	16	21	23	45	12	9	75	15	6.5	5	-	-
80	72	18	36	20	25	27	45	14	11	95	18	10	5	-	-
100	89	18	41	20	25	30	55	16	11	115	18	10	5	-	-

Series CP95

Dimensions – mounting accessories DS and ES

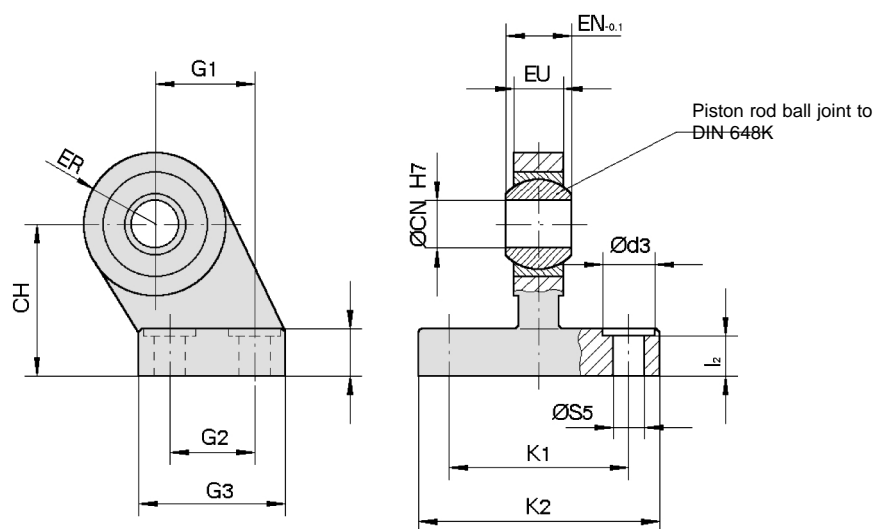
[mm]

Mounting type DS



Ø Bore	□E	B1	B2	B3	□TG1	T	L1	L3	I ₁	I ₂	FL	H	Ød1	Ød2	Ød3	CN	XD
32	45	14	34	3.3	32.5	3	11.5	41	5	5.5	22	10	30	10.5	6.6	10	142
40	55	16	40	4.3	38	4	12	48	5	5.5	25	10	35	11	6.6	12	160
50	65	21	45	4.3	46.5	4	14	54	5	6.5	27	10	40	15	9	16	170
63	75	21	51	4.3	56.5	4	14	60	5	6.5	32	12	45	15	9	16	190
80	95	25	65	4.3	72	4	16	75	5	10	36	16	45	18	11	20	210
100	115	25	75	6.3	89	4	16	85	5	10	41	16	55	18	11	20	230

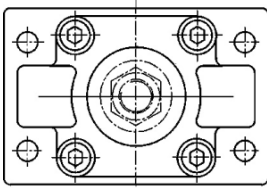
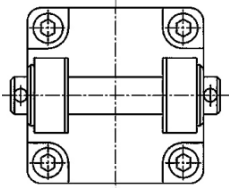
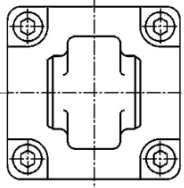
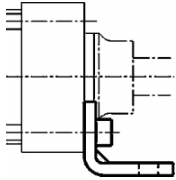
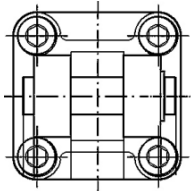
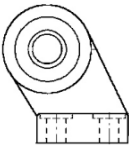
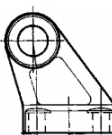
Mounting type ES



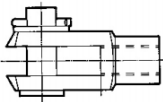
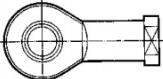
Ø Bore	Ød3	ØCN	ØS5	K1	K2	I ₂	G1	G2	G3	EN	EU	CH	H6	ER
32	11	10	6.6	38	51	8.5	21	18	31	14	10.5	32	10	15
40	11	12	6.6	41	54	8.5	24	22	35	16	12	36	10	18
50	15	16	9	50	65	10.5	33	30	45	21	15	45	12	20
63	15	16	9	52	67	10.5	37	35	50	21	15	50	12	23
80	18	20	11	66	86	11.5	47	40	60	25	18	63	14	27
100	18	20	11	76	96	12.5	55	50	70	25	18	71	15	30

Accessory

Mounting Accessory, Cylinder

Bore size (mm)	F Rod/Head side flange	D Female head side clevis (Corresponds to E accessories)	C Male head side clevis	
		 <p>Supplied with 4 screws</p>	 <p>Supplied with bolt, safety device and 4 screws</p>	 <p>Supplied with 4 screws</p>
32	<u>Without lock</u>		<u>Plain</u>	
40	F5032	D5032	C5032	
50	F5040	D5040	C5040	
63	F5050	D5050	C5050	
80	F5063	D5063	C5063	
100	F5080	D5080	C5080	
	F5100	D5100	C5100	
			<u>With ball joint</u>	
			CR5032	
			CR5040	
			CR5050	
			CR6063	
			CR5080	
			CR5100	
	See page 6-12-8 and 24 for dimensions.	See pages 6-12-8, 9 and 24 for dimensions	See pages 6-12-8, 9 and 24 for dimensions. <small>Note) See page 6-12-9 for male head side clevis with swivel CR50.</small>	
Bore size (mm)	L Foot	DS Female head side clevis (for ES accessory)	ES Angled head side clevis with ball joint	E Angled head side clevis
	 <p>Supplied with two pieces Supplied with 4 screws</p>			
32	L5032	DS5032	ES5032	E5032
40	L5040	DS5040	ES5040	E5040
50	L5050	DS5050	ES5050	E5050
63	L5063	DS5063	ES5063	E5063
80	L5080	DS5080	ES5080	E5080
100	L5100	DS5100	ES5100	E5100
	See page 6-12-8 and 24 for dimensions.	See page 6-12-10 for dimensions.	See page 6-12-10 for dimensions.	See page 6-12-9 for dimensions.

Mounting Accessory, Rod

Bore size (mm)	GKM Rod clevis ISO 8140	KJ Piston rod ball joint ISO 8139	JA Floating joint
		 <p>Supplied with bolts and safety devices</p>	
32	GKM10-20	KJ10D	JA30-10-125
40	GKM12-24	KJ12D	JA40-12-125
50	GKM16-32	KJ16D	JA50-16-150
63	GKM16-32	KJ16D	JA50-16-150
80	GKM20-40	KJ20D	JAH50-20-150
100	GKM20-40	KJ20D	JAH50-20-150
	See page 6-12-11 for dimensions.	See page 6-12-11 for dimensions.	See page 6-12-11 for dimensions.

CJ1

CJP

CJ2

CM2

CG1

MB

MB1

CA2

CS1

C76

C85

C95

CP95

NCM

NCA

D-

-X

20-

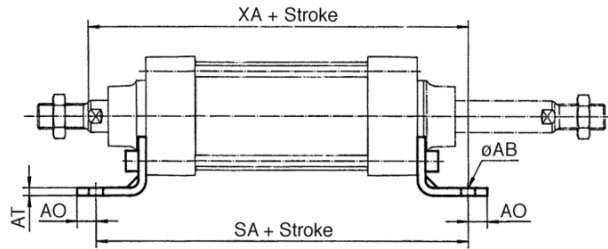
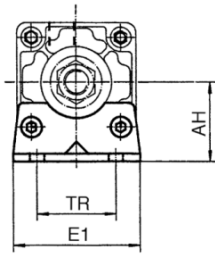
Data

Series C95

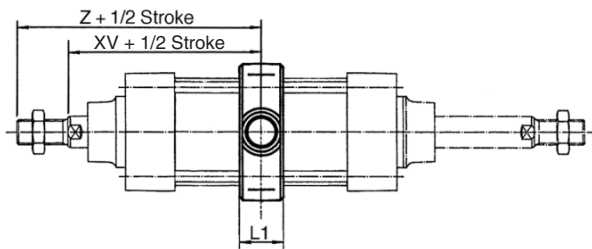
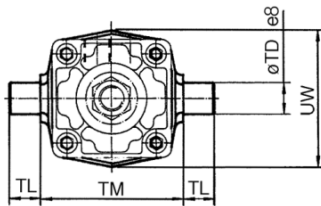
Dimensions: Cylinder Mounting Accessory

[First angle projection]

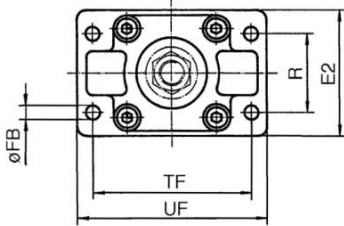
Foot style (L)



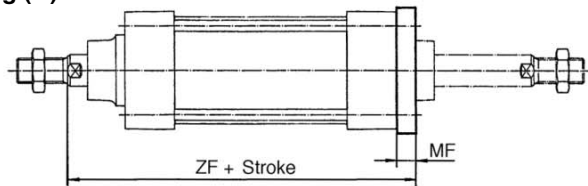
Center trunnion style (T)



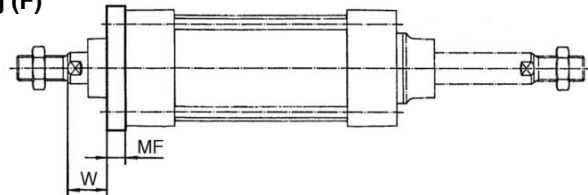
Flange style (F, G)



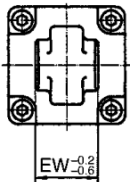
Head side mounting (G)



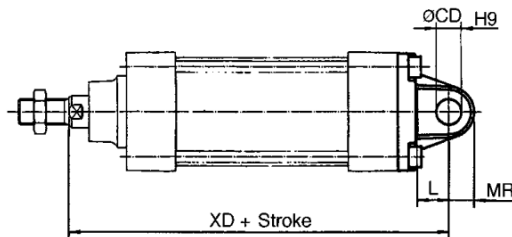
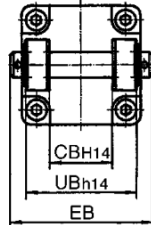
Rod side mounting (F)



Head side single clevis style (C)



Head side double clevis style (D)



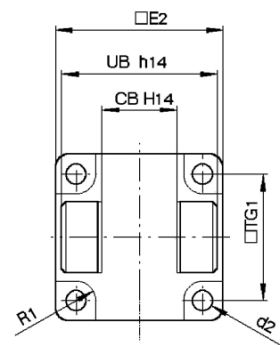
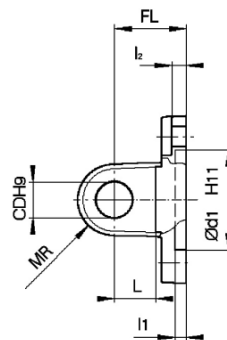
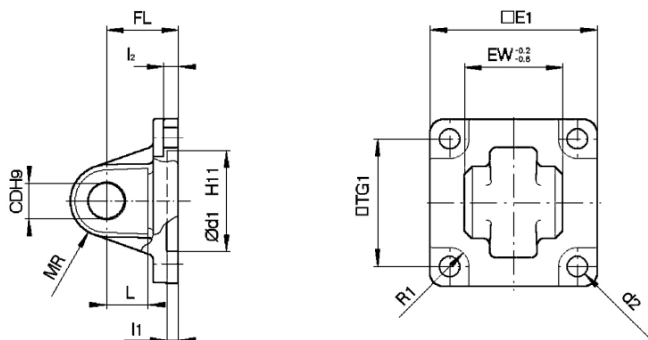
Bore size (mm)	E1	R	W	MF	ZF	øFB	øCD _{H9}	EB	L	XD	UB _{h14}	CB _{H14}	EW _{-0.2/-0.6}	MR	TR	AO	AT	XA	SA	AH	øAB	L1	XV	Z	TL	øTD _{e8}	TM	UW	TF	UF	E2
32	48	32	16	10	130	7	10	65	12	142	45	26	26	9.5	32	10	4.5	144	142	32	7	17	73	95	12	12	50	49	64	79	50
40	55	36	20	10	145	9	12	75	15	160	52	28	28	12	36	11	4.5	163	161	36	10	22	82.5	106.5	16	16	63	58	72	90	55
50	68	45	25	12	155	9	12	80	15	170	60	32	32	12	45	12	5.5	175	170	45	10	22	90	122	16	16	75	71	90	110	70
63	80	50	25	12	170	9	16	90	20	190	70	40	40	16	50	12	5.5	190	185	50	10	28	97.5	129.5	20	20	90	87	100	120	80
80	100	63	30	16	190	12	16	110	20	210	90	50	50	16	63	14	6.5	215	210	63	12	34	110	150	20	20	110	110	126	153	100
100	120	75	35	16	205	14	20	140	25	230	110	60	60	20	75	16	6.5	230	220	71	14.5	40	120	160	25	25	132	136	150	178	120

Dimensions: Cylinder Mounting Accessory C, D, E and CR

[First angle projection]

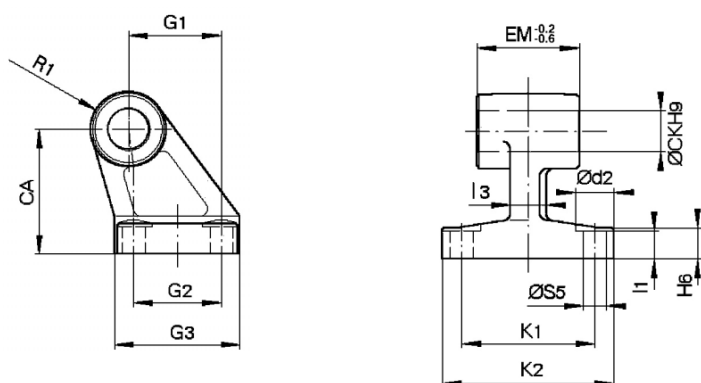
Mounting style (C)

Mounting style (D)



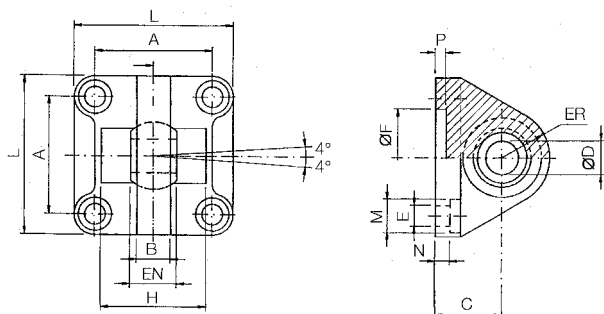
Bore size (mm)	□E1	EW	□TG1	FL	l1	L	l2	ød1	CD	MR	d2	R1	□E2	UB	CB
32	45	26	32.5	22	5	12	5.5	30	10	9.5	6.6	6.5	48	45	26
40	51	28	38	25	5	15	5.5	35	12	12	6.6	6.5	56	52	28
50	64	32	46.5	27	5	15	6.5	40	12	12	9	8.5	64	60	32
63	74	40	56.5	32	5	20	6.5	45	16	16	9	8.5	75	70	40
80	94	50	72	36	5	20	10	45	16	16	11	11	95	90	50
100	113	60	89	41	5	25	10	55	20	20	11	12	115	110	60

Mounting style (E)



Bore size (mm)	ød2	øCK	øS5	K1	K2	l3	G1	l1	G2	EM	G3	CA	H6	R1
32	11	10	6.6	38	51	10	21	7	18	26	31	32	8	10
40	11	12	6.6	41	54	10	24	9	22	28	35	36	10	11
50	15	12	9	50	65	12	33	11	30	32	45	45	12	12
63	15	16	9	52	67	14	37	11	35	40	50	50	12	15
80	18	16	11	66	86	18	47	12.5	40	50	60	63	14	15
100	18	20	11	76	96	20	55	13.5	50	60	70	71	15	19

Mounting style (CR): Head side clevis with ball joint



Bore size (mm)	A	B	C	D	EN	ER	F	E	L	M	N	P	H
	±0.2	max	±0.2	H7	-0.1	max	H11	H13		H13	±0.5		±0.5
32	32.5	10.5	22	10	14	15	30	6.6	45	10.5	5.5	5	—
40	38	12	25	12	16	18	35	6.6	55	11	5.5	5	—
50	46.5	15	27	16	21	20	40	9	65	15	6.5	5	51
63	56.5	15	32	16	21	23	45	9	75	15	6.5	5	—
80	72	18	36	20	25	27	45	11	95	18	10	5	—
100	89	18	41	20	25	30	55	11	115	18	10	5	—

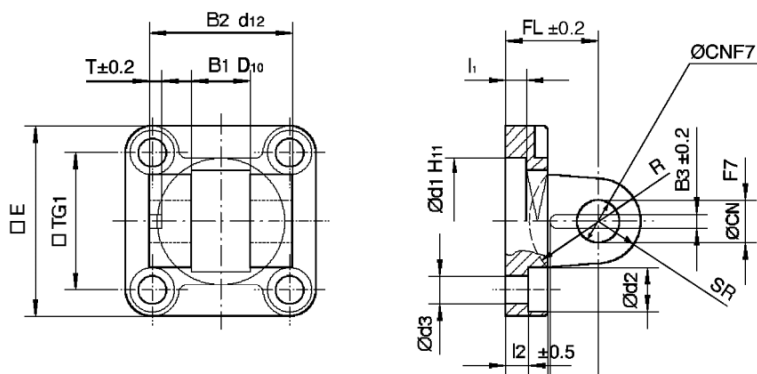
- CJ1
- CJP
- CJ2
- CM2
- CG1
- MB
- MB1
- CA2
- CS1
- C76
- C85
- C95**
- CP95
- NCM
- NCA
- D-
- X
- 20-
- Data

Series C95

Dimensions: Cylinder Mounting Accessory DS and ES

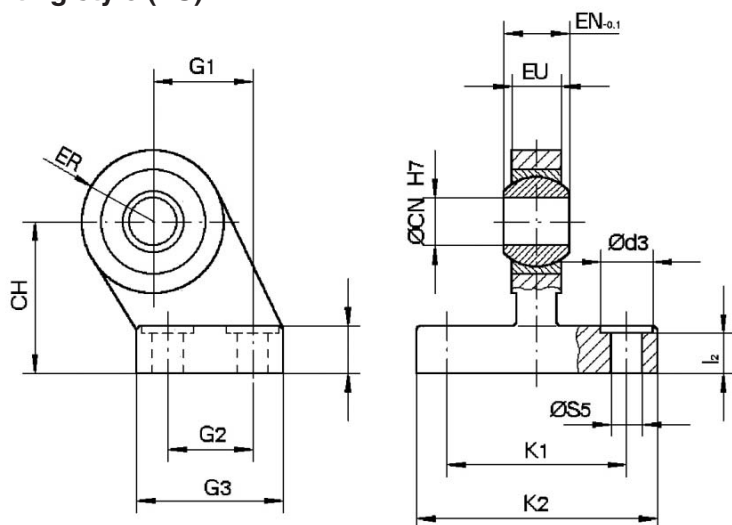
[First angle projection]

Mounting style (DS)



Bore size (mm)	□E	B ₁	B ₂	B ₃	□TG ₁	T	l ₁ (min)	l ₂	FL	H	ød ₁	ød ₂	ød ₃	CN	SR (max)	R
32	45	14	34	3.3	32.5	3	5	5.5	22	10	30	10.5	6.6	10	11	17
40	55	16	40	4.3	38	4	5	5.5	25	10	35	11	6.6	12	13	20
50	65	21	45	4.3	46.5	4	5	6.5	27	10	40	15	9	16	18	22
63	75	21	51	4.3	56.5	4	5	6.5	32	12	45	15	9	16	18	25
80	95	25	65	4.3	72	4	5	10	36	16	45	18	11	20	22	30
100	115	25	75	6.3	89	4	5	10	41	16	55	18	11	20	22	32

Mounting style (ES)



Bore size (mm)	ød ₃	øCN	øS ₅	K ₁	K ₂	l ₂	G ₁	G ₂	G ₃	EN	EU	CH	H ₆	ER
32	11	10	6.6	38	51	8.5	21	18	31	14	10.5	32	10	15
40	11	12	6.6	41	54	8.5	24	22	35	16	12	36	10	18
50	15	16	9	50	65	10.5	33	30	45	21	15	45	12	20
63	15	16	9	52	67	10.5	37	35	50	21	15	50	12	23
80	18	20	11	66	86	11.5	47	40	60	25	18	63	14	27
100	18	20	11	76	96	12.5	55	50	70	25	18	71	15	30

ISO/VDMA Cylinder: Large Bore Size Type Double Acting, Single Rod

Series C95

ø125, ø160, ø200, ø250

How to Order

Without auto switch C95S **B** **125** **100**

With auto switch C95SD **B** **125** **100** **A53** **S**

Built-in magnet ●

Mounting style ●

B	Basic/without bracket style
L	Axial foot style
F	Rod side flange style
G	Head side flange style
C	Single clevis style
D	Double clevis style
T	Center trunnion style

Bore size ●

125	125 mm
160	160 mm
200	200 mm
250	250 mm

Refer to "Standard Stroke" on page 6-12-35.

Stroke (mm) ●

Number of auto switches

Nil	2 pcs.
S	1 pc.
3	3 pcs.
n	"n" pcs.

Auto switch

Nil	Without auto switch
------------	---------------------

* For the applicable auto switch model, refer to the table below.

Applicable Auto Switch/Tie-rod Mounting

Type	Special function	Electrical entry	Indicator light	Wiring (Output)	Load voltage		Auto switch model		Lead wire length (m)			Applicable load					
					DC	AC	Tie-rod mounting	Band mounting	0.5 (Nil)	3 (L)	5 (Z)						
Reed switch	—	Grommet	Yes	3-wire (Equiv. to NPN)	—	5 V	—	A56	—	●	●	—	IC	—			
				2-wire	24 V	12 V	—	A53	—	●	●	●	—	—	Relay, PLC		
						5 V, 12 V	100 V, 200 V	A54	—	●	●	●	—				
						12 V	200 V or less	A67	—	●	●	—	IC				
				Diagnostic indication (2-color)	No	—	—	A64	—	●	●	—	—	—	—		
	—	—	A59W			—	●	●	—	—	—						
	—	Terminal conduit	Yes	2-wire	24 V	12 V	100 V, 200 V	—	A33	—	—	—	—	—	PLC		
								—	A34	—	—	—	—	—	—	—	Relay, PLC
								—	A44	—	—	—	—	—	—	—	—
								—	—	—	—	—	—	—	—	—	—
—								—	—	—	—	—	—	—	—	—	—
Solid state switch	—	Grommet	Yes	3-wire (NPN)	24 V	5 V, 12 V	—	F59	—	●	●	○	IC	Relay, PLC			
				3-wire (PNP)	—	—	100 V, 200 V	F5P	—	●	●	○	—				
				2-wire	—	12 V	—	J51	—	●	●	○	—				
	Diagnostic indication (2-color)	No	3-wire (NPN)	—	5 V, 12 V	—	J59	—	●	●	○	—	—				
			3-wire (PNP)	—	—	—	F59W	—	●	●	○	IC					
	Water resistant (2-color) With timer	Yes	2-wire	—	12 V	—	F5PW	—	●	●	○	—	—				
			—	—	—	J59W	—	●	●	○	—	—					
	Diagnostic output (2-color)	No	3-wire (NPN)	24 V	5 V, 12 V	—	F5BAL	—	—	●	○	—	—				
			4-wire (NPN)	—	—	—	F5NTL	—	—	●	○	IC					
	—	Terminal conduit	Yes	3-wire (NPN)	24 V	5 V, 12 V	—	F59F	—	●	●	○	IC	Relay, PLC			
				3-wire (PNP)	—	—	—	Y59A	—	●	●	○	IC				
				2-wire	—	12 V	—	Y59B	—	●	●	○	—				
	Diagnostic indication (2-color)	No	3-wire (PNP)	—	5 V, 12 V	—	Y7P	—	●	●	○	—	—				
			3-wire (NPN)	—	—	—	Y7NW	—	●	●	○	IC					
			3-wire (PNP)	—	—	—	Y7PW	—	●	●	○	—					
Water resistant (2-color)	Yes	2-wire	—	12 V	—	Y7BW	—	—	●	○	—	—					
		—	—	—	Y7BAL	—	—	—	●	○	—						
—	Terminal conduit	No	3-wire (NPN)	—	5 V, 12 V	—	G39	—	—	—	—	IC	—				
			2-wire	—	12 V	—	K39	—	—	—	—	—					

* Lead wire length symbols: 0.5 m Nil (Example) A53
 3 m L (Example) A53L
 5 m Z (Example) A53Z

○: Manufactured upon receipt of order.
 Note) Switch can not be mounted on ø250
 Refer to page 6-16-1 for details of applicable auto switches in addition to those listed above.

Mounting Bracket Part No.

Bore size (mm)	125	160	200	250
Foot ⁽¹⁾	L5125	L5160	L5200	L5250
Flange	F5125	F5160	F5200	F5250
Single clevis	C5125	C5160	C5200	C5250
Double clevis	D5125	D5160	D5200	D5250

Auto Switch Mounting Bracket Part No.

Bore size (mm)	125	160	200	250
D-A3/A4/K3/G3	BS1-125	BS1-160	BS1-200	—
D-A5/A6/F5/J5	BT-08	BT-16	BT-16	BT-20
D-Z□/Y□	BA4-080	BS4-160	BS4-160	—

Note 1) Two foot brackets and mounting bolts (4 pieces) are included in this no. (ø125 to ø250)

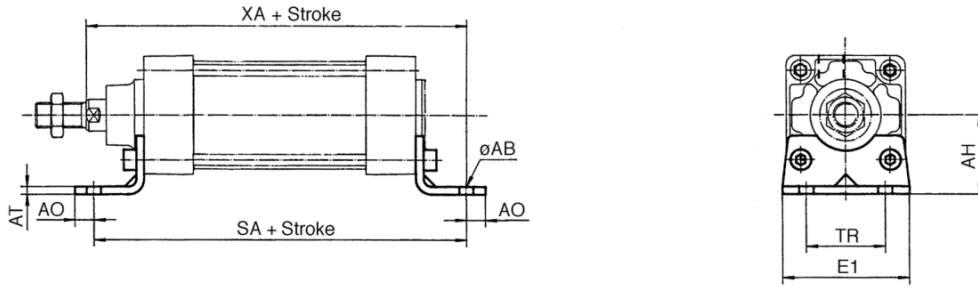
Note 2) Accessories for mounting brackets are as follows
 Foot, Flange, Single clevis: Mounting bolts
 Double clevis : Clevis pin, Retaining rings, Mounting bolts

Series C95

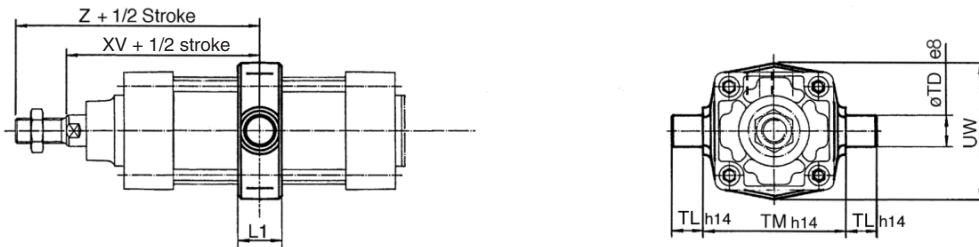
Dimensions: Cylinder Mounting Accessory

[First angle projection]

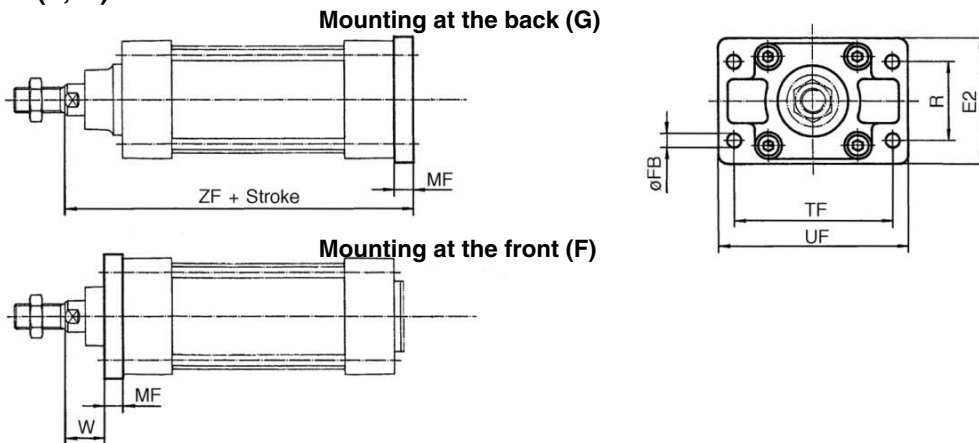
Foot style (L)



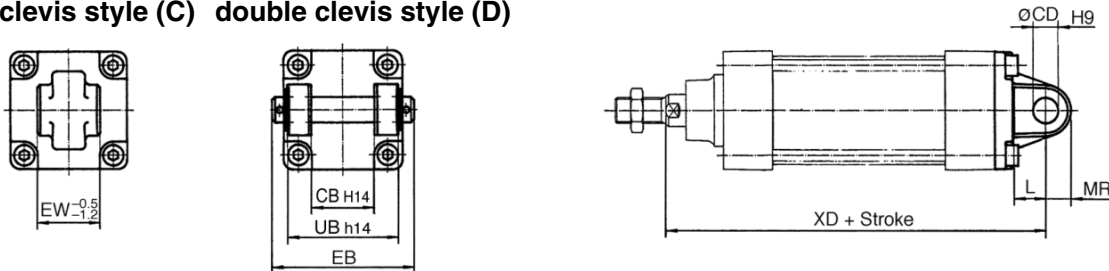
Center trunnion style (T)



Flange style (F, G)



Head side single clevis style (C) Head side double clevis style (D)



Bore (mm)	E1	R	W	MF	ZF	øFB	øCD H9	EB	L	XD	UB h14	CB H14	EW -0.5 +0.2	MR	TR	AO	AT	XA	SA	AH	øAB	L1	XV	Z	TL h14	øTD ø8	TM h14	UW	TF	UF	E2
125	Max. 157	90	45	20	245	16	25	Max. 157	Min. 30	275	130	70	70	Max. 26	90	Max. 25	8	270	250	90	16	Max. 50	145	199	25	25	160	Max. 160	180	Max. 224	Max. 157
160	Max. 195	115	60	20	280	18	30	Max. 209	Min. 35	315	170	90	90	Max. 31	115	Max. 25	9	320	300	115	18	Max. 50	170	242	32	32	200	Max. 220	230	Max. 280	Max. 195
200	Max. 238	135	70	25	300	22	30	Max. 209	Min. 35	335	170	90	90	Max. 31	135	Max. 35	12	345	320	135	22	Max. 50	185	257	32	32	250	Max. 260	270	Max. 320	Max. 238
250	Max. 290	165	80	25	330	26	40	Max. 249	Min. 45	375	200	110	110	Max. 41	165	Max. 40	14.5	380	350	165	26	Max. 60	205	289	40	40	320	Max. 320	330	Max. 395	Max. 290

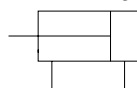


Specifications

Bore size (mm)	32	40	50	63	80	100
Action	Double acting single rod					
Direction of low friction	One direction					
Fluid	Air					
Proof pressure	1.05MPa					
Max. operating pressure	0.7MPa					
Min. operating pressure	0.01MPa					
Ambient and fluid temperature	Without auto switch: -10 to 70°C (No freezing)					
	With auto switch: -10 to 60°C (No freezing)					
Lubrication	Not required (Non-lube)					
Cushion	None					
Port size	Rc(PT)1/8	Rc(PT)1/4	Rc(PT)1/4	Rc(PT)3/8	Rc(PT)3/8	Rc(PT)1/2
Mounting	Basic, Foot, Front flange, Rear flange, Single clevis, Double clevis, Centre trunnion, spherical bearing					

Standard Stroke

ISO Symbol
Double acting



Bore size (mm)	Standard stroke (mm)	Max. * stroke
32	25, 50, 80, 100, 125, 160, 200, 250, 320, 400, 500	1000
40	25, 50, 80, 100, 125, 160, 200, 250, 320, 400, 500	1000
50	25, 50, 80, 100, 125, 160, 200, 250, 320, 400, 500, 600	1000
63	25, 50, 80, 100, 125, 160, 200, 250, 320, 400, 500, 600	1000
80	25, 50, 80, 100, 125, 160, 200, 250, 320, 400, 500, 600	1000
100	25, 50, 80, 100, 125, 160, 200, 250, 320, 400, 500, 600	1000

Intermediate strokes are available.

Part No: Mounting Bracket, Mounting Accessories

Description	Bore size	ø32	ø40	ø50	ø63	ø80	ø100
L	Foot ⁽¹⁾	L5032	L5040	L5050	L5063	L5080	L5100
F,G	Flange	F5032	F5040	F5050	F5063	F5080	F5100
C	Single rear clevis	C5032	C5040	C5050	C5063	C5080	C5100
D	Double rear clevis	D5032	D5040	D5050	D5063	D5080	D5100
DS	Double rear clevis (for ES accessory)	DS5032	DS5040	DS5050	DS5063	DS5080	DS5100
ES	Angled rear clevis with ball joint	ES5032	ES5040	ES5050	ES5063	ES5080	ES5100
E	Angled rear clevis	E5032	E5040	E5050	E5063	E5080	E5100
C95-S	Trunnion pivot bracket	C95-S03	C95-S04	C95-S04	C95-S06	C95-S06	C95-S10
GKM	Rod clevis	GKM10-20	GKM12-24	GKM16_32	GKM16-32	GKM20-40	GKM20-40
KJ	Piston rod ball joint	KJ10D	KJ12D	KJ16D	KJ16D	KJ20D	KJ20D
JA	Floating joint	JA30-10-125	JA40-12-125	JA50-16-150	JA50-16-150	JAH50-20-150	JAH50-20-150

Note 1) Two foot brackets required for one cylinder.

Note 2) Accessories for each mounting bracket are as follows.

Foot, Flange, Single clevis: Mounting bolts

Double rear clevis: (D,DS): Clevis pin

Note 3) C95-S: Set of 2 pcs.

Note 4) GKM according to ISO 8140

Note 5) KJ according to ISO 8139

Note 6) Piston rod nut is standard