

# Free Mount Cylinder

## Single Acting, Single Rod, Spring Return/Extend

# Series CU

ø6, ø10, ø16, ø20, ø25, ø32



### How to Order

Without auto switch

CU 10 [ ] 15 S

With auto switch

CDU 10 [ ] 15 S M9B [ ]

Built-in magnet

Bore size

6	6 mm
10	10 mm
16	16 mm
20	20 mm
25	25 mm
32	32 mm

Port thread type

Symbol	Type	Bore size
Nil	M5 x 0.8	ø6, ø10, ø16, ø20, ø25
	Rc1/8	ø32
TN	NPT1/8	ø32
TF	G1/8	ø32

Number of auto switches

Nil	2 pcs.
S	1 pc.

Auto switch

Nil	Without auto switch
-----	---------------------

\* Refer to the table below for applicable auto switches.  
\* Auto switches are shipped together but not assembled.

Action

S	Single acting, Spring return
T	Single acting, Spring extend

Standard stroke (mm)

ø6, ø10, ø16	5, 10, 15
ø20, ø25, ø32	

### Applicable Auto Switches/Refer to page 68 to 72 for further information on auto switches.

Type	Special function	Electrical entry	Indicator light	Wiring (Output)	Load voltage		Auto switch model		Lead wire length (m)*			Pre-wired connector	Applicable load		
					DC	AC	Perpendicular	In-line	0.5 (Nil)	3 (L)	5 (Z)		Applicable load		
													IC circuit	Relay, PLC	
Reed switch	—	Grommet	Yes	3-wire (NPN equivalent)	—	5 V	—	A96V	A96	●	●	—	—	IC circuit	—
				2-wire	24 V	12 V	100 V	A93V	A93	●	●	—	—	—	Relay, PLC
Solid state switch	Diagnostic indication (2-color indication)	Grommet	Yes	3-wire (NPN)	24 V	5 V, 12 V	100 V or less	M9NV	M9N	●	●	○	○	IC circuit	Relay, PLC
				3-wire (PNP)				M9PV	M9P	●	●	○	○	IC circuit	
				2-wire				M9BV	M9B	●	●	○	○	—	
				3-wire (NPN)				F9NWV	F9NW	●	●	○	○	IC circuit	
				3-wire (PNP)				F9PWV	F9PW	●	●	○	○	IC circuit	
				2-wire				F9BWV	F9BW	●	●	○	○	—	

\* Lead wire length symbols: 0.5 m.....Nil (Example) M9N  
3 m.....L (Example) M9NL  
5 m.....Z (Example) M9NZ

\* Solid state switches marked with "○" are produced upon receipt of order.

\* Normally closed (NC=b contact), solid states switches (Model D-F9G, F9H) are also available.  
For detail, refer to page 7-9-23 in Best Pneumatics 2004 Vol. 7 catalog.

\* For detail about auto switches with pre-wired connector, refer to page 7-9-36 in the Best Pneumatics 2004 Vol. 7 catalog.



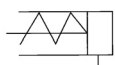
## Specifications

Bore size (mm)	6	10	16	20	25	32
Fluid	Air					
Proof pressure	1.05 MPa					
Maximum operating pressure	0.7 MPa					
Minimum operating pressure	0.2 MPa	0.15 MPa	0.13 MPa			
Ambient and fluid temperature	Without auto switch: -10 to 70°C (No freezing) With auto switch: -10 to 60°C (No freezing)					
Lubrication	Non-lube					
Piston speed	50 to 500 mm/s					
Cushion	Rubber bumper <sup>Note)</sup>					
Rod end thread	Male thread					
Thread tolerance	JIS Class 2					
Stroke length tolerance	+1.0 0 mm					

Note) ø6 with auto switch type: One side rubber bumper

### JIS Symbol

Single acting,  
Spring return



Single acting,  
Spring extend



## Standard Stroke

Bore size (mm)	Standard stroke (mm)
6, 10, 16, 20, 25, 32	5, 10, 15

## Minimum Stroke for Auto Switch Mounting

(mm)

No. of auto switches mounted	Applicable auto switch		
	D-A9□, D-A9□V	D-M9□, D-M9□V	D-F9□W, D-F9□WV
1 pc.	5	5	5
2 pcs.	10	5	10



## Made to Order Specifications (For details, refer to page 43.)

Symbol	Specifications
-XC22	Seals made of fluorine rubber

## Theoretical Output

(N)

Action	Bore size (mm)	Operating pressure (MPa)		
		0.3	0.5	0.7
Spring return (S)	ø6	4.99	10.7	16.3
	ø10	16.7	32.4	48.1
	ø16	45.6	86.3	126
	ø20	73	136	199
	ø25	119	218	316
	ø32	207	368	529
Spring extend (T)	ø6	2.86	7.10	11.3
	ø10	12.9	26.1	39.3
	ø16	37.2	71.8	106
	ø20	58	111	164
	ø25	95	178	260
	ø32	173	312	450

For the reactive force of spring return, refer to page 7-12-3 in Best Pneumatics 2004 Vol. 7 catalog.

## Weight( ): Denotes the values with D-A93.

(g)

Model	Stroke (mm)		
	5	10	15
C(D)U6-□S,T	22(27)	25(35)	28(38)
C(D)U10-□S,T	36(41)	40(50)	48(58)
C(D)U16-□S,T	50(75)	56(86)	71(101)
C(D)U20-□S,T	95(128)	106(143)	133(170)
C(D)U25-□S,T	176(230)	193(252)	235(294)
C(D)U32-□S,T	262(335)	286(364)	347(425)

\* For the weight of auto switch, refer to page 68 to 72.

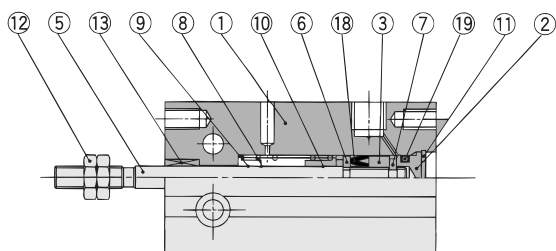
## Tightening Torque

When mounting a CU single acting series, refer to page 3.

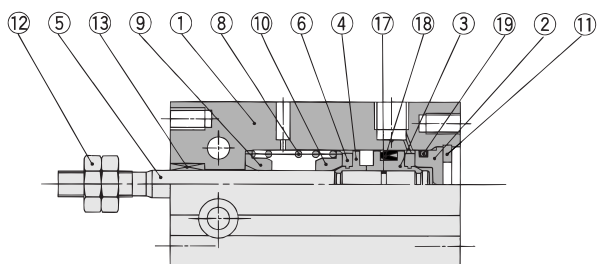
# Series CU

## Construction

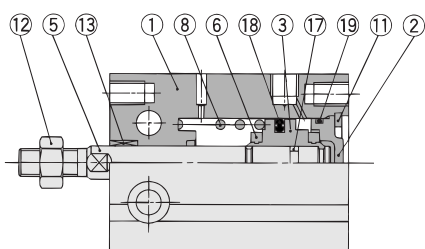
### Single acting, Spring return



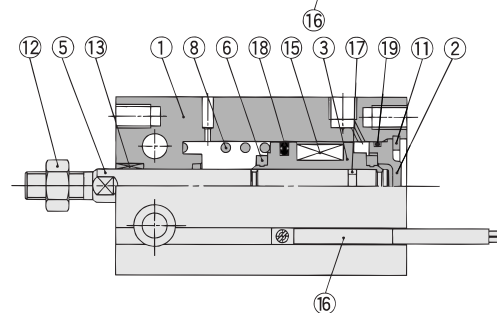
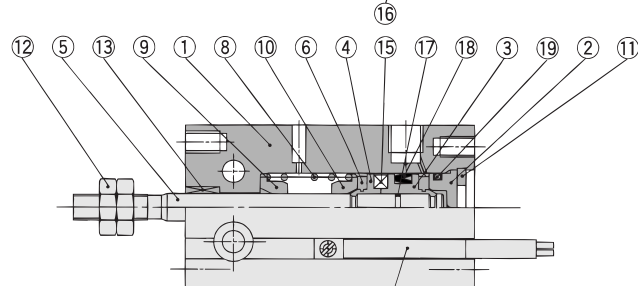
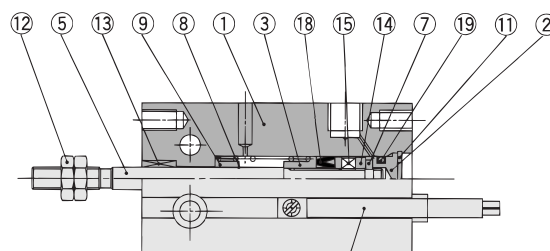
ø10



ø16 to ø32



### With auto switch



### Component Parts

No.	Description	Material	Note
1	Cylinder tube	Aluminum alloy	Hard anodized
2	Head cover	Brass	ø6 to ø10, Electroless nickel plated
		Aluminum alloy	ø16 to ø32, Clear chromated
3	Piston	Brass	ø6 to ø10
		Aluminum alloy	ø16 to ø32, Chromated
4	Piston	Brass	ø10
5	Piston rod	Stainless steel	
6	Bumper A	Urethane	
7	Bumper B	Urethane	
8	Return spring	Piano wire	Zinc chromated

### Component Parts

No.	Description	Material	Note
9	Spring seat	Brass	
10	Spring seat	Brass	
11	Snap ring	Carbon tool steel	Phosphate coated
12	Rod end nut	Carbon steel	Nickel plated
13	Bushing	Oil-impregnated sintered alloy	
14	Magnet holder	Brass	ø6
15	Magnet	Magnetic material	
16	Auto switch	—	
17	Piston gasket	NBR	
18*	Piston seal		
19*	Gasket		

### Replacement Parts: Seal Kit

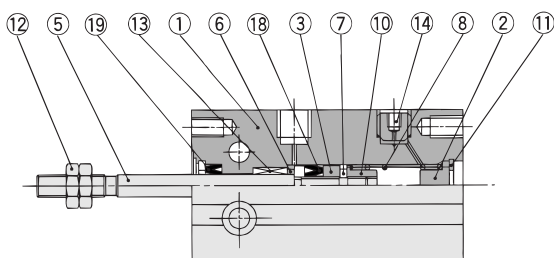
Kit no.	Bore size (mm) / Part no.				
	10	16	20	25	32
	CU10S-PS	CU16S-PS	CU20S-PS	CU25S-PS	CU32S-PS

\* Seal kit includes 18, 19. Order the seal kit, based on each bore size.

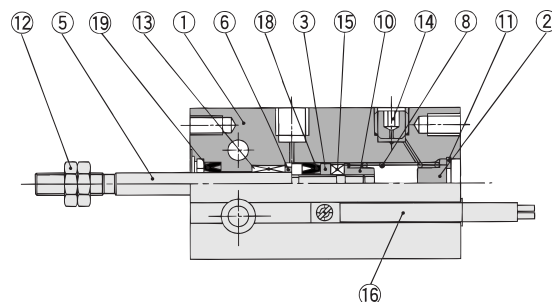
## Construction

### Single acting, Spring extend

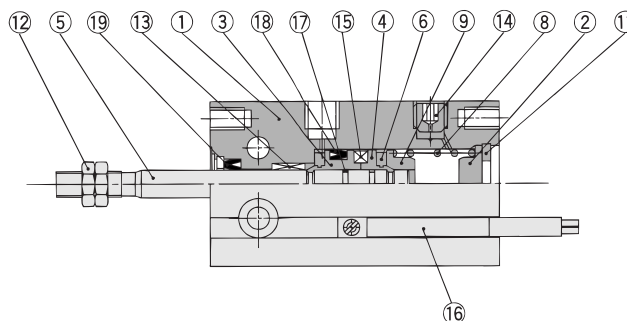
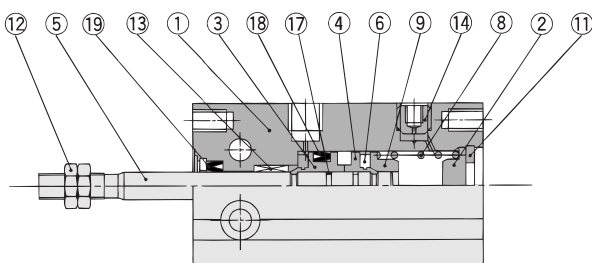
ø6



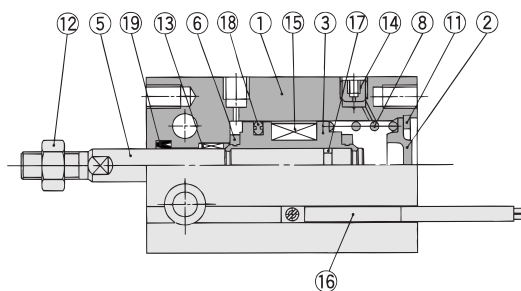
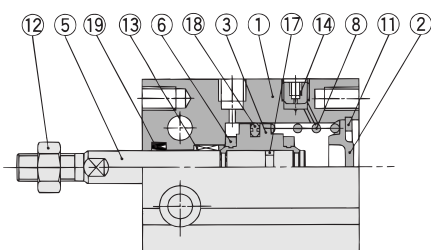
### With auto switch



ø10



ø16 to ø32



### Component Parts

No.	Description	Material	Note
1	Cylinder tube	Aluminum alloy	Hard anodized
2	Head cover	Brass	ø6 to ø10, Electroless nickel plated
		Aluminum alloy	ø16 to ø32, Clear chromated
3	Piston	Brass	ø6 to ø10
		Aluminum alloy	ø16 to ø32, Chromated
4	Piston	Brass	ø10
5	Piston rod	Stainless steel	
6	Bumper A	Urethane	
7	Bumper B	Urethane	
8	Return spring	Piano wire	Zinc chromated

### Component Parts

No.	Description	Material	Note
9	Spring seat	Brass	
10	Stopper	Brass	ø6
11	Snap ring	Carbon tool steel	Phosphate coated
12	Rod end nut	Carbon steel	Nickel plated
13	Bushing	Oil-impregnated sintered alloy	
14	Plug with fixed orifice	Alloy steel	Black zinc chromated
15	Magnet	Magnetic material	
16	Auto switch	—	
17	Piston gasket	NBR	
18*	Piston seal		
19*	Rod seal		

### Replacement Parts: Seal Kit

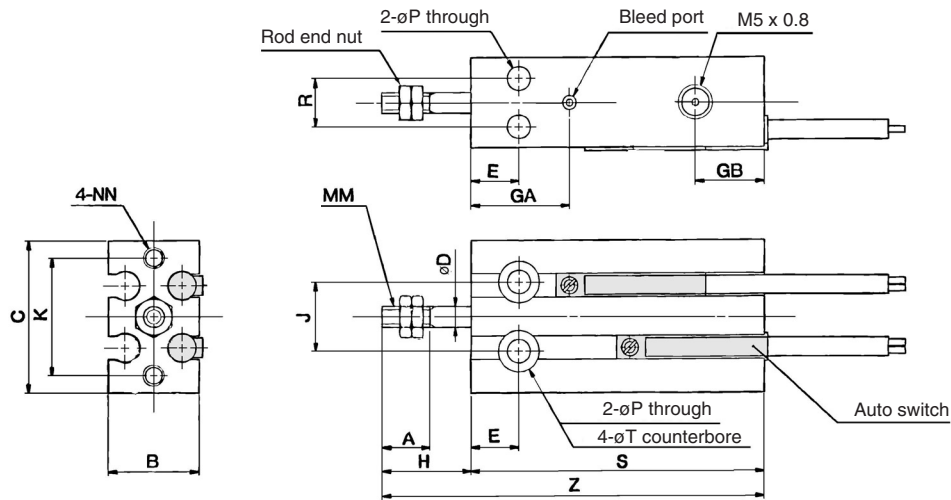
Kit no.	Bore size (mm) / Part no.				
	10	16	20	25	32
	CU10T-PS	CU16T-PS	CU20T-PS	CU25T-PS	CU32T-PS

\* Seal kit includes 18, 19. Order the seal kit, based on each bore size.

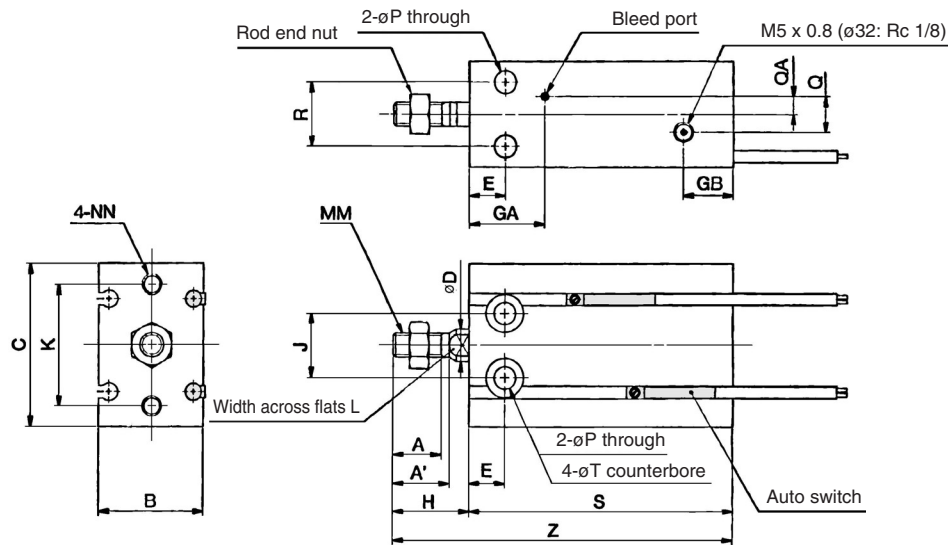
# Series CU

## Dimensions: Single Acting, Spring Return

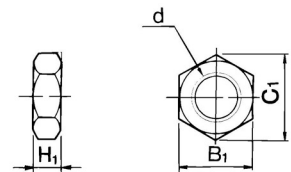
ø6, ø10



ø16 to ø32



### Rod End Nut/Accessory



Material: Carbon steel

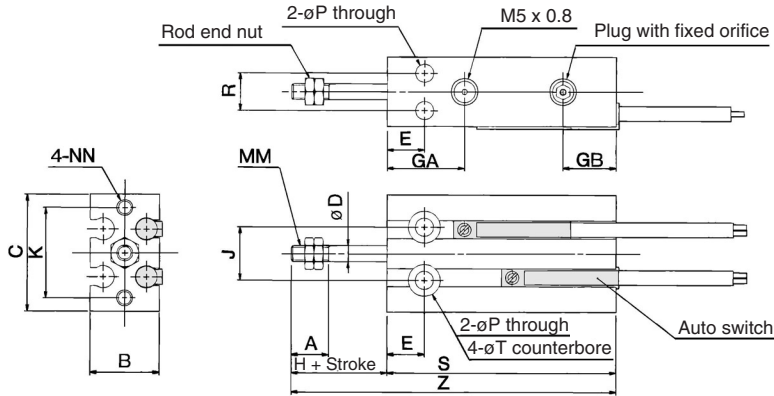
Part no.	Applicable bore size (mm)	d	H <sub>1</sub>	B <sub>1</sub>	C <sub>1</sub>
NTP-006	6	M3 x 0.5	1.8	5.5	6.4
NTP-010	10	M4 x 0.7	2.4	7	8.1
NTJ-015A	16	M5 x 0.8	4	8	9.2
NT-015A	20	M6 x 1.0	5	10	11.5
NT-02	25	M8 x 1.25	5	13	15.0
NT-03	32	M10 x 1.25	6	17	19.6

Bore size (mm)	A	A'	B	C	D	E	GA	GB	H	J	K	L	MM	NN	P	Q	QA	R	T
6	7	—	13	22	3	7	15	10	13	10	17	—	M3 x 0.5	M3 x 0.5 depth 5	3.2	—	—	7	6 depth 4.8
10	10	—	15	24	4	7	16.5	10	16	11	18	—	M4 x 0.7	M3 x 0.5 depth 5	3.2	—	—	9	6 depth 5
16	11	12.5	20	32	6	7	16.5	11.5	16	14	25	5	M5 x 0.8	M4 x 0.7 depth 6	4.5	4	2	12	7.6 depth 6.5
20	12	14	26	40	8	9	19	12.5	19	16	30	6	M6 x 1.0	M5 x 0.8 depth 8	5.5	9	4.5	16	9.3 depth 8
25	15.5	18	32	50	10	10	21.5	13	23	20	38	8	M8 x 1.25	M5 x 0.8 depth 8	5.5	9	4.5	20	9.3 depth 9
32	19.5	22	40	62	12	11	23	12.5	27	24	48	10	M10 x 1.25	M6 x 1.0 depth 9	6.6	13.5	4.5	24	11 depth 11.5

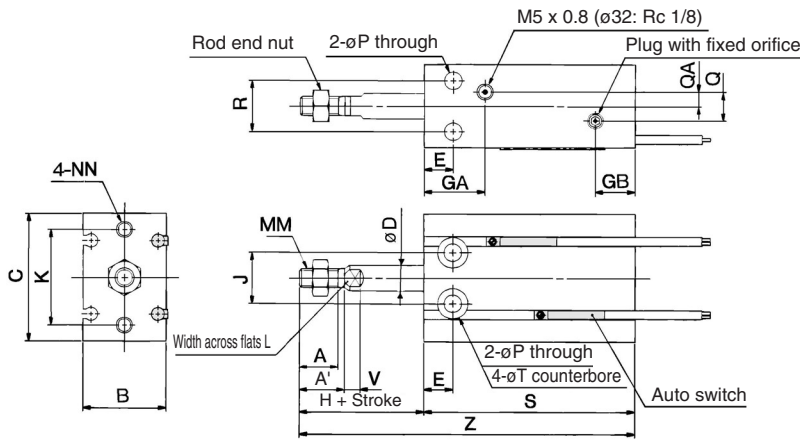
Bore size (mm)	Without auto switch						With auto switch								
	S			Z			S			Z					
	5 st	10 st	15 st	5 st	10 st	15 st	5 st	10 st	15 st	5 st	10 st	15 st	5 st	10 st	15 st
6	38	43	48	51	56	61	38	43	48	51	56	61	38	43	48
10	41	46	56	57	62	72	41	46	56	57	62	72	41	46	56
16	35	40	50	51	56	66	45	50	60	61	66	76	45	50	60
20	41	46	56	60	65	75	51	56	66	70	75	85	51	56	66
25	45	50	60	68	73	83	55	60	70	78	83	93	55	60	70
32	47	52	62	74	79	89	57	62	72	84	89	99	57	62	72

### Dimensions: Single Acting, Spring Extend

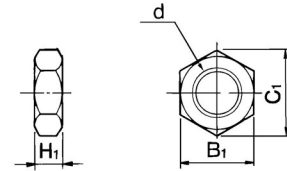
ø6, ø10



ø16 to ø32



### Rod End Nut/Accessory



Material: Carbon steel

Part no.	Applicable bore size (mm)	d	H <sub>1</sub>	B <sub>1</sub>	C <sub>1</sub>
NTP-006	6	M3 x 0.5	1.8	5.5	6.4
NTP-010	10	M4 x 0.7	2.4	7	8.1
NTJ-015A	16	M5 x 0.8	4	8	9.2
NT-015A	20	M6 x 1.0	5	10	11.5
NT-02	25	M8 x 1.25	5	13	15.0
NT-03	32	M10 x 1.25	6	17	19.6

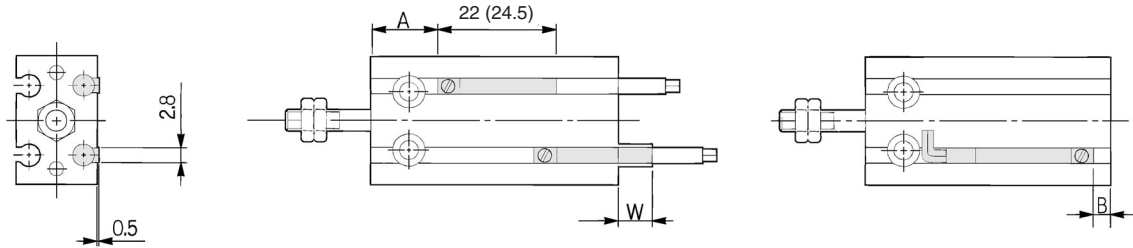
Bore size (mm)	(mm)																			
	A	A'	B	C	D	E	GA	GB	H	J	K	L	MM	NN	P	Q	QA	R	T	V
6	7	—	13	22	3	7	15	10	13	10	17	—	M3 x 0.5	M3 x 0.5 depth 5	3.2	—	—	7	6 depth 4.8	—
10	10	—	15	24	4	7	16.5	10	16	11	18	—	M4 x 0.7	M3 x 0.5 depth 5	3.2	—	—	9	6 depth 5	—
16	11	12.5	20	32	6	7	16.5	11.5	16	14	25	5	M5 x 0.8	M4 x 0.7 depth 6	4.5	4	2	12	7.6 depth 6.5	3.5
20	12	14	26	40	8	9	19	12.5	19	16	30	6	M6 x 1.0	M5 x 0.8 depth 8	5.5	9	4.5	16	9.3 depth 8	5
25	15.5	18	32	50	10	10	21.5	13	23	20	38	8	M8 x 1.25	M5 x 0.8 depth 8	5.5	9	4.5	20	9.3 depth 9	5
32	19.5	22	40	62	12	11	23	12.5	27	24	48	10	M10 x 1.25	M6 x 1.0 depth 9	6.6	13.5	4.5	24	11 depth 11.5	5

Bore size (mm)	Without auto switch						With auto switch					
	S			Z			S			Z		
	5 st	10 st	15 st	5 st	10 st	15 st	5 st	10 st	15 st	5 st	10 st	15 st
6	38	43	48	56	66	76	38	43	48	56	66	76
10	41	46	56	62	72	87	41	46	56	62	72	87
16	45	50	60	66	76	91	45	50	60	66	76	91
20	41	46	56	65	75	90	51	56	66	75	85	100
25	45	50	60	73	83	98	55	60	70	83	93	108
32	47	52	62	79	89	104	57	62	72	89	99	114

# Series CU

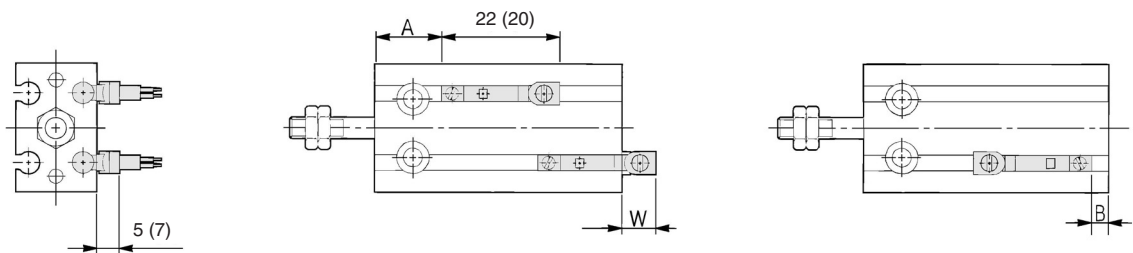
## Proper Auto Switch Mounting Position and Its Mounting Height: Single Acting, Spring Return

D-A9□  
D-M9□  
D-F9□W



( ) : Denotes the values of D-A93.

D-A9□V  
D-M9□V  
D-F9□WV



( ) : Denotes the values of D-M9□V, D-F9□WV.

### Single Acting, Spring Return

Bore size (mm)	Stroke	D-A9□, D-A9□V			D-M9□, D-F9□W			D-M9□V, D-F9□WV		
		A	B	W	A	B	W	A	B	W
6	All stroke	13.5	0	2.5(5)	17.5	4	6.5	17.5	4	4.5
10	5, 10	12.5	3.5	-1.5(1)	16.5	7.5	2.5	16.5	7.5	0.5
	15	17.5			21.5			21.5		
16	5, 10	16	4	-2(0.5)	20	8	2	20	8	-0.5
	15	21			25			25		
20	5, 10	20	6	-4(-1.5)	24	10	0	24	10	-2
	15	25			29			29		
25	5, 10	22.5	7	-5.5(-3)	26.5	11	-1.5	26.5	11	-3.5
	15	27.5			31.5			31.5		
32	5, 10	23.5	8.5	-6.5(-4)	27.5	12.5	-2.5	27.5	12.5	-4.5
	15	28.5			32.5			32.5		



Note 1) Figures in the table above are used as a reference when mounting the auto switches for stroke end detection. In the case of actually setting the auto switches, adjust them after confirming their operation.

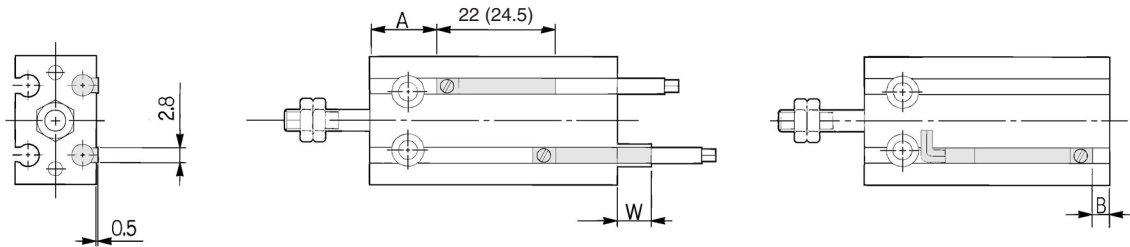
Note 2) Negative figures in the table W indicate an auto switch is mounted inward from the edge of the cylinder body.

Note 3) In the case of the 5 stroke or the 10 stroke, there are times in which the switch will not turn OFF or 2 switches will turn ON simultaneously due to their movement range. Therefore, set the position approximately 1 to 4 mm outward from the values given in the table above. Then, perform an operation inspection to make sure that the switches operate normally (if 1 switch is used, make sure that it turns ON and OFF properly; if 2 switches are used, make sure that both switches turn ON).

Note 4) ( ) in column W is the dimensions of D-A93.

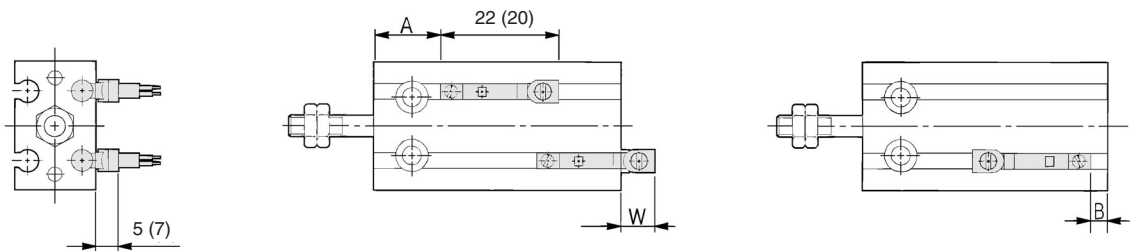
**Proper Auto Switch Mounting Position and Its Mounting Height: Single Acting, Spring Extend**

D-A9□  
D-M9□  
D-F9□W



( ) : Denotes the values of D-A93.

D-A9□V  
D-M9□V  
D-F9□WV



( ) : Denotes the values of D-M9□V, D-F9□WV.

**Single Acting, Spring Extend**

Bore size (mm)	Stroke	D-A9□, D-A9□V			D-M9□, D-F9□W			D-M9□V, D-F9□WV		
		A	B	W	A	B	W	A	B	W
6	All stroke	10.5	1.5	0.5(3)	14.5	5.5	4.5	14.5	5.5	2.5
10	5, 10	12.5	3.5	-1.5(1)	16.5	7.5	2.5	16.5	7.5	0.5
	15		8.5	-6.5(-4)		12.5	-2.5		12.5	-4.5
16	5, 10	16	4	-2(0.5)	20	8	2	20	8	0
	15		9	-7(-4.5)		13	-3		13	-5
20	5, 10	20	6	-4(-1.5)	24	10	0	24	10	-2
	15		11	-9(-6.5)		15	-5		15	-7
25	5, 10	22.5	7	-5.5(-3)	26.5	11	-1.5	26.5	11	-3.5
	15		12	-10.5(-8)		16	-6.5		16	-8.5
32	5, 10	23.5	8.5	-6.5(-4)	27.5	12.5	-2.5	27.5	12.5	-4.5
	15		13.5	-11.5(-9)		17.5	-7.5		17.5	-9.5



Note 1) Figures in the table above are used as a reference when mounting the auto switches for stroke end detection. In the case of actually setting the auto switches, adjust them after confirming their operation.

Note 2) Negative figures in the table W indicate an auto switch is mounted inward from the edge of the cylinder body.

Note 3) In the case of the 5 stroke or the 10 stroke, there are times in which the switch will not turn OFF or 2 switches will turn ON simultaneously due to their movement range. Therefore, set the position approximately 1 to 4 mm outward from the values given in the table above. Then, perform an operation inspection to make sure that the switches operate normally (if 1 switch is used, make sure that it turns ON and OFF properly; if 2 switches are used, make sure that both switches turn ON).

Note 4) ( ) in column W is the dimensions of D-A93.