

With Stable Lubrication Function (Lube-retainer)

# Dual Rod Cylinder/ Compact Type

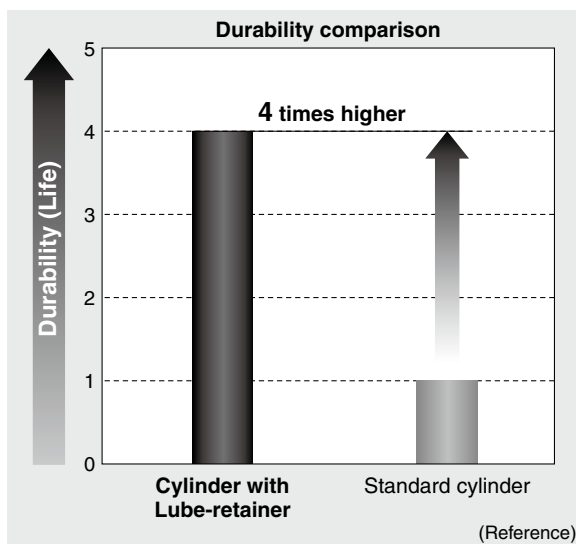
ø6, ø10, ø15, ø20, ø25, ø32

RoHS

## 4 times the durability of

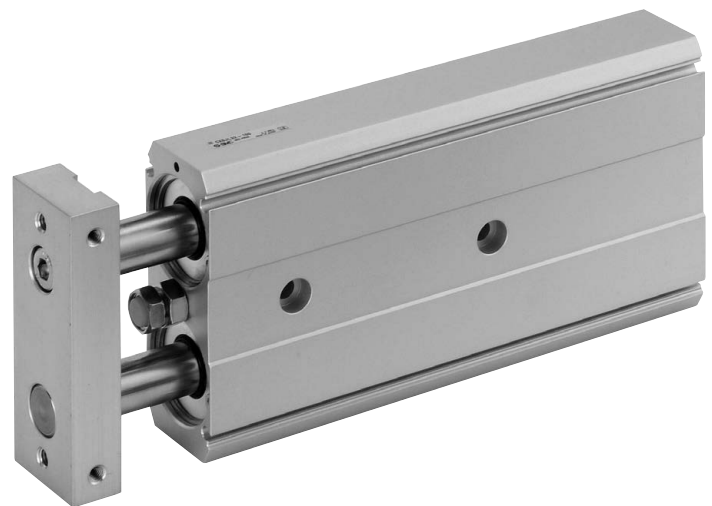
10 to 100  $\mu\text{m}$

the standard model in **micro-powder environments**



Comparison with the standard model  
(Relative ratio of B<sub>10</sub>)

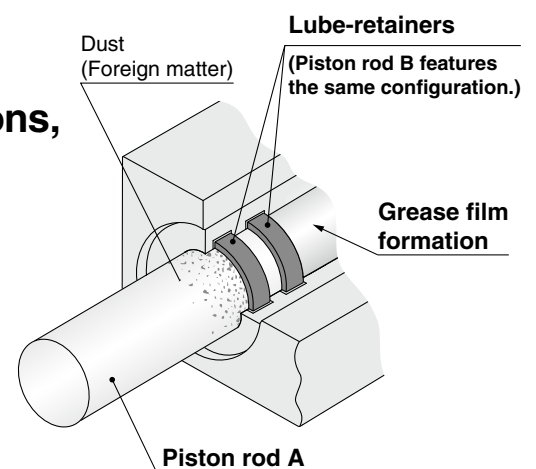
\* This durability test was conducted in accordance with SMC test conditions.



As Lube-retainers are mounted in two locations, grease film is formed on the piston rod surface, improving durability.

This construction allows for the prevention of the entry of dust and foreign matter.

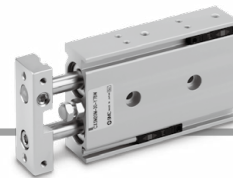
The number of operating cycles can be improved even in general environments.



**CXSJ Series**

**SMC**

18-E690



## How to Order

**CXS J M 20 M - 100 - M9BW**

Compact type

Bearing type

M	Slide bearing
L	Ball bushing bearing

With stable lubrication function (Lube-retainer)

Bore size [mm]	Standard stroke [mm]
6	10, 20, 30, 40, 50
10	10, 20, 30, 40, 50, 75
15, 20, 25, 32	10, 20, 30, 40, 50, 75, 100

Number of auto switches

Nil	2 pcs.
S	1 pc.
n	n pcs.

Auto switch

Nil	Without auto switch (Built-in magnet)
-----	---------------------------------------

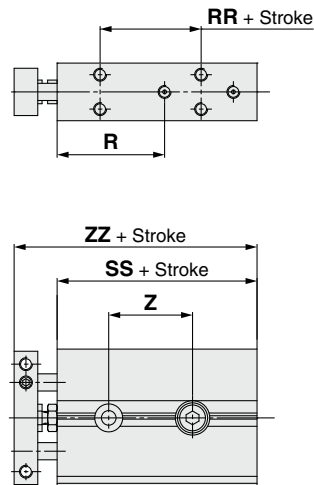
\* Applicable auto switch is the same as that of the standard model.

## Specifications

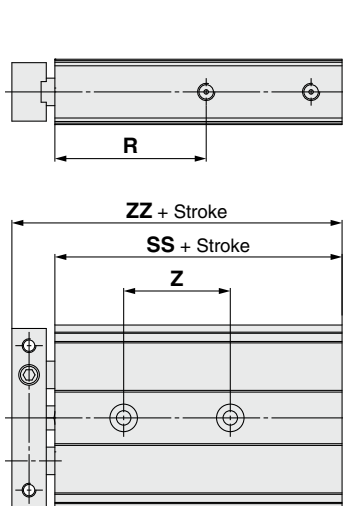
Bore size [mm]	6	10	15	20	25	32
Minimum operating pressure	0.2 MPa	0.15 MPa		0.1 MPa		
Piston speed	50 to 800 mm/s		50 to 700 mm/s		50 to 600 mm/s	
Other specifications	Same as the standard model					
Dimensions	See below.					

## Dimensions (Dimensions other than those shown below are the same as those of the standard model.)

### CXSJ□6, 10M



### CXSJ□15 to 32M



	[mm]			
Model	R	RR	SS	ZZ
CXSJ□6M	25	13.5	36.5	46.5
CXSJ□10M	33.5	17	49.5	61
CXSJ□15M	44	—	63.5	76
CXSJ□20M	51	—	73.5	90
CXSJ□25M	52	—	76.5	93
CXSJ□32M	66	—	90.5	110.5

		[mm]						
Model	Symbol	Z						
	Stroke	10	20	30	40	50	75	100
CXSJ	6M	19.5	29.5	39.5	49.5	59.5	—	—
CXSJ	10M	23	33	43	53	63	88	—
CXSJ	15M	31			41		51	61
CXSJ	20M	36			46		66	
CXSJ	25M	37			47		67	
CXSJ	32M	50			60		80	