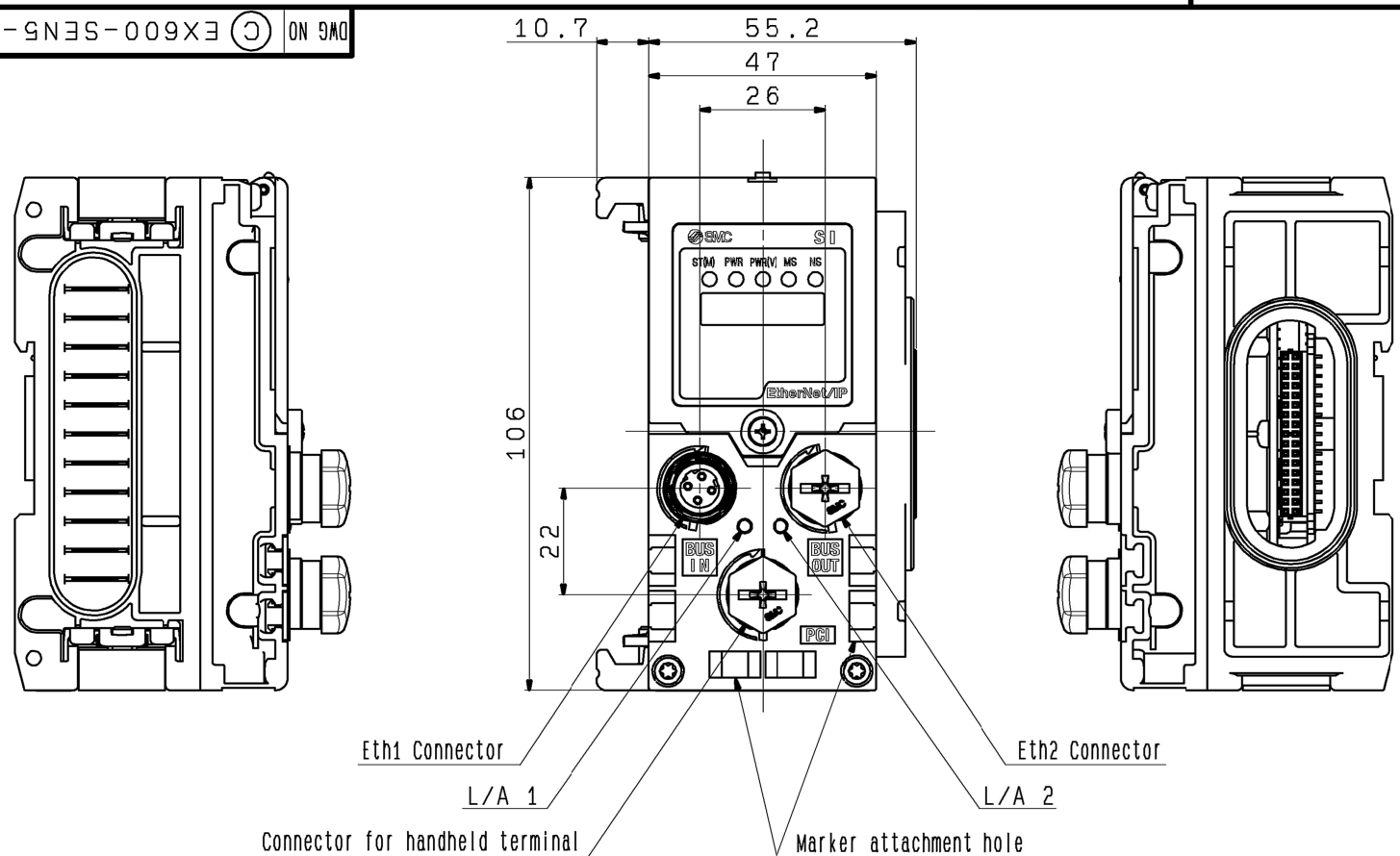


② 91X-SEN5-009XE (C) ON 9MO



Eth1/Eth2 Connector pin assignment

Pin no.	Description	M12, 4pins, D-coding, socket
1	Tx+	
2	Rx+	
3	Tx-	
4	Rx-	

Table 1

Input Map: 8byte fixed

	bit0	bit1	bit2	bit3	bit4	bit5	bit6	bit7
Byte0	0							Note 1)
Byte1	0	Note 2)						0
Byte2	Input0	Input1	Input2	Input3	Input4	Input5	Input6	Input7
Byte3	Input8	Input9	Input10	Input11	Input12	Input13	Input14	Input15
...	...	...	...	...	...	...	...	...
Byte7	Input40	Input41	Input42	Input43	Input44	Input45	Input46	Input47

Note 1) Diagnosis of power supply for output  
Note 2) Diagnosis of power supply for control and input

Output Map: 12byte fixed

	bit0	bit1	bit2	bit3	bit4	bit5	bit6	bit7	Remarks
Byte0	Reserved								
Byte1	Reserved								
Byte2	Output0	Output1	Output2	Output3	Output4	Output5	Output6	Output7	Solenoid valve
Byte3	Output8	Output9	Output10	Output11	Output12	Output13	Output14	Output15	Solenoid valve
Byte4	Output16	Output17	Output18	Output19	Output20	Output21	Output22	Output23	Solenoid valve
Byte5	Output24	Output25	Output26	Output27	Output28	Output29	Output30	Output31	Solenoid valve
Byte6	Output0	Output1	Output2	Output3	Output4	Output5	Output6	Output7	Output unit 1
Byte7	Output8	Output9	Output10	Output11	Output12	Output13	Output14	Output15	Output unit 1
Byte8	Output0	Output1	Output2	Output3	Output4	Output5	Output6	Output7	Output unit 2
Byte9	Output8	Output9	Output10	Output11	Output12	Output13	Output14	Output15	Output unit 2
Byte10	Output0	Output1	Output2	Output3	Output4	Output5	Output6	Output7	Output unit 3
Byte11	Output8	Output9	Output10	Output11	Output12	Output13	Output14	Output15	Output unit 3

\*Unless otherwise noted along with a separate contract or agreement within the Product Specifications, the safety instructions specified in the product catalog or the operation manual are applied. Please contact your local SMC Sales office for further details.

Specifications

Model	EX600-SEN5-X16
Protocol	EtherNet/IP™
Communication speed	100Mbps/10Mbps
Communication method	Full-duplex/Half-duplex
IP address setting range	SI Unit switch settings:136.129.2.1 to 254 Through DHCP server:Optional address
Device Information	Vender ID:7(SMC Corporation) Device type:12(Communication Adapter) Product code:182
Quick connect™ function	Supported
DLR function	Supported
WEB server function	Supported
Number of outputs	32 outputs
Output type	Source/PNP(negative common)
Load	Solenoid valve with surge voltage suppressor of 24VDC and 1.0W or less. (manufactured by SMC)
Operating temperature range	-10 to 50℃
Storage temperature range	-20 to 60℃
Operating humidity range	35 to 85% RH(No dew condensation)
Vibration resistance	10 to 57 Hz:Constant amplitude 0.75mm p-p 57 to 150Hz:Constant acceleration 49m/s <sup>2</sup> for 2 hours each in direction of X,Y and Z respectively(De-energized)
Impact resistance	147m/s <sup>2</sup> 3 times each in direction of X,Y and Z respectively(De-energized)
Standards	CE Marked, UL(CSA),RoHS compliant
Weight	300g or less

LED indication

LED display	Content
OFF	The power supply for control and input is OFF.
Green ON	Normal operation.
Green flashing	Diagnostic error of I/O unit is detected.
Red flashing	Either of the following diagnostic error is detected. (When diagnostic parameter is enabled.) -Valve ON/OFF counter has exceeded the set value. -Valve is short circuited or disconnected.
Red/green flashing alternately	Detect a communication error between SI unit and I/O unit.
Red ON	SI unit has failed.
PWR	Green ON: The power supply for control and input is more than approx.18VDC. Red ON: The power supply for control and input less than approx.18VDC.
PWR(V)	Green ON: The power supply for output is more than approx.18VDC. Red ON: The power supply for output is less than approx.18VDC.
MS	Green flashing: Either of the following conditions are detected. -The unit has not been configured correctly. -The master is idle state. Green ON: Normal operation. Red flashing: Diagnostic error is detected. Red ON: The element in SI unit is broken.
NS	OFF: IP address is not set. Green flashing: EtherNet/IP™ communication is not established. Green ON: EtherNet/IP™ communication is established. Red flashing: EtherNet/IP™ communication is time-out. Red ON: IP address is duplicated.
L/A	OFF: No Link, No Activity. Green ON: Link, No Activity(100 Mbps) Green flashing: Link, Activity(100 Mbps) Yellow ON: Link, No Activity(10 Mbps) Yellow flashing: Link, Activity(10 Mbps)

Special specification

1. I/O Map follows Table 1.
2. IP address setting range via switches:136.129.2.1 to 254

FINISH					
PAINT					
MASS					
PACKING					
REV. QTY	DESCRIPTION	DATE PREPARED	REV NO	MATERIAL	MODEL QTY
1	2017-06-29	2017-06-29	1		
TOLERANCES JIS B 0405		DRAWN M. Koiso		SCALE 1:1	
RANGE (mm)	GRADE	DATE	DESIGNED K. Nakai	DWG NAME SI Unit	
0.5<D<3	0.05 0.1 0.2	2017-06-29	DATE 2017-06-29	DWG NO	
3<D<6	0.05 0.1 0.3	2017-06-29	CHECKED M.Okamoto	REVISION	
8<D<30	0.1 0.2 0.5	2017-06-29	DATE 2017-07-03	② EX600-SEN5-X16	
30<D<120	0.15 0.3 0.8	2017-07-03	APPROVED M.Seo	DWG ID BA33580802	
120<D<400	0.2 0.5 1.2	2017-07-03	DATE 2017-07-03	SMC Corporation	
400<D<1000	0.3 0.8 2				
1000<D<2000	0.5 1.2 3				

FINISH:表面処理 / PAINT:塗装 / MASS:質量  
PACKING:包装区分 / MATERIAL:材質  
MATERIAL SIZE:材料寸法

DWG NAME

DWG REC

DWG ID BA33580802

SMC Corporation