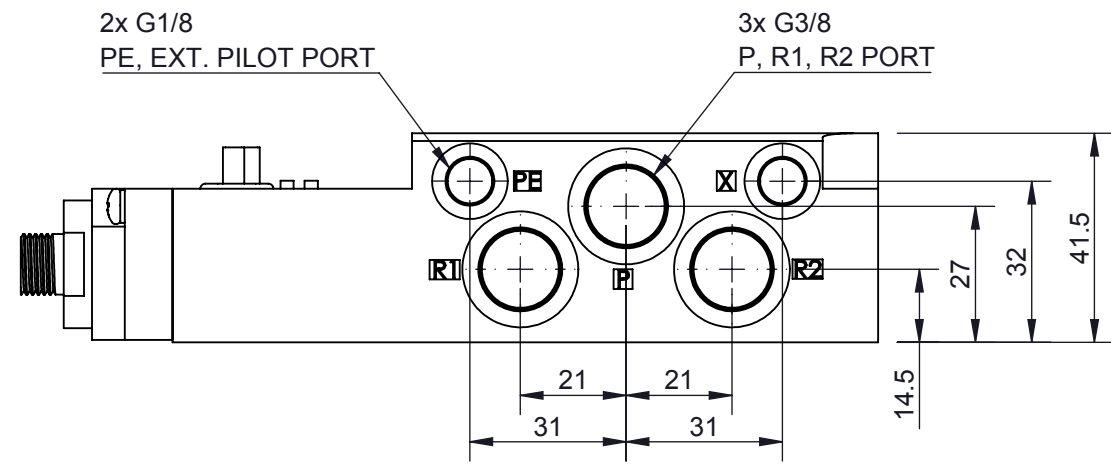
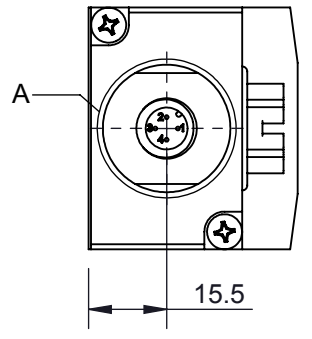
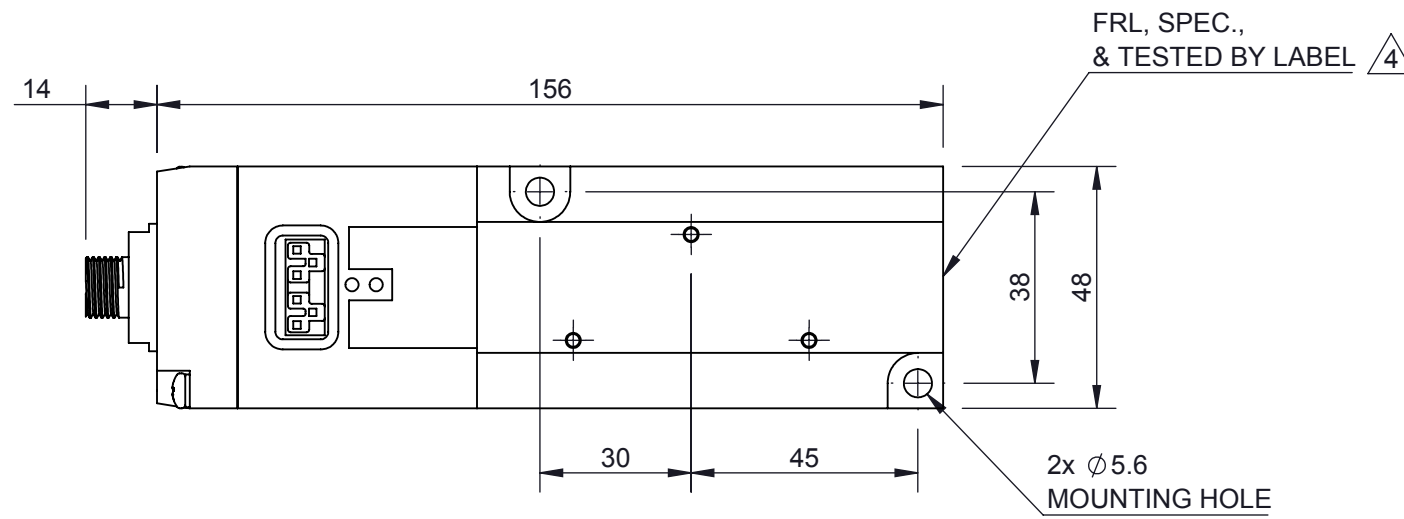
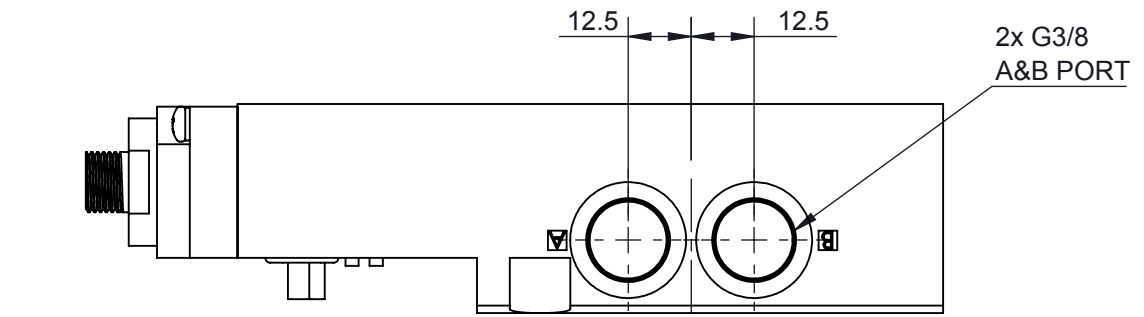


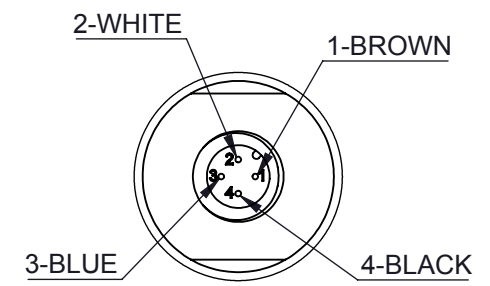
IN9001

REV.	ECN	DESCRIPTION	DATE	BY
1		CHANGE TO G THREAD SUBPLATE	7/19/2006	CT
2		ADD WIRE COLOR	11/2/2006	DN
3		CORRECT ELECTRICAL PIN OUT	5/24/2007	CT
4		ADDED NOTES; -C01; NEW MODEL AND DRAWING	11/30/2017	EM



ELECTRICAL SCHEMATIC

PIN NO.	VALUE	COLOR
1	-	BROWN
2	SOL. B	WHITE
3	COM.	BLUE
4	SOL. A	BLACK



DETAIL A
SCALE 1 : 1

NOTES: (UNLESS OTHERWISE SPECIFIED)

1. ALL DIMENSIONS ARE IN MILLIMETERS.
2. ALL DIMENSIONS ARE FOR REFERENCE ONLY.
3. TEST FOR CONTINUITY (<4 ohms) AND ISOLATION.
4. USE LOCTITE #425 FOR CONNECTOR THREAD.

1	VQ4000-C01-PW-DAK00314	SPECIAL CONNECTOR WIRING	1
ITEM NO.	PART NUMBER	DESCRIPTION	QTY.
UNITS mm		SCALE FREE	SMC Corporation of America <small>THIS DRAWING CONTAINS CONFIDENTIAL INFORMATION PROPRIETARY TO SMC CORPORATION OF AMERICA. IT MUST NOT BE REPRODUCED OR DISCLOSED TO OTHERS OR USED IN ANY OTHER WAY, IN PART OR IN WHOLE, EXCEPT AS AUTHORIZED IN WRITING BY SMC CORPORATION OF AMERICA.</small>
DRAWN BY C. THIRAPANISH	DATE 6/1/2006	APPROVED BY REFER TO EDM SYSTEM	
PRINTED DOCUMENTS ARE UNCONTROLLED REFER TO EDM SYSTEM FOR CONTROLLED DOCUMENT		DRAWING/PART No.	SHEET 1 OF 1 REVISION 4
CAD FILE VQ4000-PW-DAK00314	SIZE B	VQ4000-PW-DAK00314	

REFERENCE NUMBER: US47107