





Pressure Gauge Guide

Pressure Gauge for General Purpose

Outside diameter	Model	Type	Indication precision ±% FS	Pressure range MPa	Connection thread	Material			Indication ⁽¹⁾ unit	Attachment ⁽²⁾
						Case	Clear cover	Stud		
	ø15 G15	Back side thread	5	0 to 1.0	R 1/8 M5 (Female thread)	Zinc die-casted (Black graphite coated)	Poly-carbonate	Zinc die-casted (Black graphite coated)	MPa	—
	ø26 G27	Back side thread		0 to 1.0					R 1/16	
	ø37.5 G36	Back side thread	3	0 to 0.2 0 to 0.4	R 1/8	Aluminum die-casted (Black disulfide molybdenum coated)	Poly-carbonate	Aluminum die-casted (Black disulfide molybdenum coated)	MPa	—
	GA36	Vertical side thread		0 to 0.7 0 to 1.0 0 to 1.5						
	ø42.5 G46	Back side thread	3	0 to 0.2 0 to 0.4	R 1/8 R 1/4	Aluminum die-casted (Black disulfide molybdenum coated)	Poly-carbonate	Aluminum die-casted (Black disulfide molybdenum coated)	MPa	Cover ring assembly
	GA46	Vertical side thread		0 to 0.7 0 to 1.0 0 to 1.5						Rolled steel (Black melamine painted)
	ø30 G33	Back side thread	3	0 to 0.2 0 to 0.3	R 1/8	Stainless steel	Glass	Brass	MPa	—
	GA33	Vertical side thread		0 to 0.4 0 to 0.6						
	ø43 G43	Back side thread		0 to 0.7 0 to 1.0						




Note 1) Please consult with SMC for other scale indication units and connecting thread "NPT".

Note 2) Possible for use in panel mounting.

Note 3) Please contact SMC for the pressure range 0 to 0.6 MPa of GA33.

Oil-free/External Parts Copper-free Pressure Gauge


Outside diameter	Model	Type	Indication precision ±% FS	Pressure range MPa	Connection thread	Material			Indication ⁽¹⁾ unit	Attachment ⁽²⁾
						Case	Clear cover	Stud		
	ø42.5 G46E	Back side thread	3	0 to 0.2 0 to 0.4 0 to 0.7 0 to 1.0 0 to 1.5	R 1/8 R 1/4	Rolled steel (Black melamine painted)	Poly-carbonate (Hard coated)	Brass (Electroless nickel plated)	MPa	Cover ring assembly



Note 1) Please consult with SMC for other scale indication units and connecting thread "NPT".

Note 2) Possible for use in panel mounting.


Pressure Gauge for Clean Series (10-Series)

Outside diameter	Model	Type	Indication precision ±% FS	Pressure range MPa	Connection thread	Material			Indication ⁽¹⁾ unit	Attachment
						Case	Clear cover	Stud		
	ø44 G49	Back side thread	3	0 to 0.4 0 to 0.7 0 to 1.0	R 1/4	Zinc die-casted (Chrome plated)	Glass	Brass (Nickel plated)	MPa	—



Note 1) Please consult with SMC for other scale indication units and connecting thread "NPT".

Pressure Gauge for Clean Regulator


Outside diameter	Model	Type	Indication precision ±% FS	Pressure range MPa	Connection thread	Material			Indication ⁽¹⁾ unit	Attachment
						Case	Clear cover	Stud		
	ø42.5 G46-SRA, B	Back side thread	3	0 to 0.2 0 to 0.4 0 to 0.7 0 to 1.0 0 to 1.5	R 1/8 R 1/4	Stainless steel (Black melamine painted)	Poly-carbonate (Hard coated)	Stainless steel	MPa	Cover ring assembly



Note 1) Please consult with SMC for other scale indication units and connecting thread "NPT".

Note 2) Possible for use in panel mounting.

Pressure Gauge with Switch

Outside diameter	Model	Type	Indication precision ±% FS	Pressure range MPa	Connection thread	Material			Indication ⁽¹⁾ unit	Attachment ⁽²⁾
						Case	Clear cover	Stud		
	ø42.5 GP46	Back side thread	3	0 to 1.0	R 1/8 R 1/4	Rolled steel (Black melamine painted)	Poly-carbonate	Brass	MPa	Cover ring assembly



Note 1) Please consult with SMC for other scale indication units and connecting thread "NPT".

Note 2) Possible for use in panel mounting.

Pressure Gauge for General Purpose

G33, GA33

O.D.: $\phi 30$



Standard Specifications

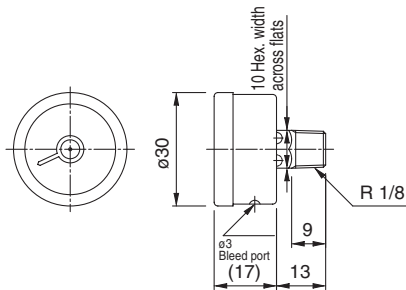
Model		G33	GA33
Type		Back side thread	Vertical side thread
Port size ⁽¹⁾		R 1/8	
Fluid ⁽²⁾		Air	
Indication precision		±3% F.S. (Full span)	
Material	Case	Stainless steel	
	Clear cover	Glass	
	Stud	Brass	
	Bourdon tube	Brass	
Applicable model	IP5000, IP6000, IR1000, IT1000, ARM2500/3000		

Note 1) When mounting a pressure gauge, use caution not to tighten excessively. Excessive tightening will cause product to be damaged. Use a pipe tape for sealing. Recommended tightening torque: R 1/8: Set between 7 and 9 N·m.

Note 2) When using other fluids, please consult with SMC for fluid compatibility information concerning corrosive potential.

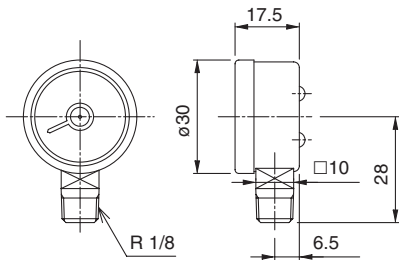
Dimensions

G33



G33-□□-01

GA33



GA33-□□-01

Model (Standard)

Model	Pressure range ^{Note)}	Indication unit	Connection thread	Note
	MPa			
G33-2-01	0 to 0.2	MPa	R 1/8	—
G33-3-01	0 to 0.3			
G33-4-01	0 to 0.4			
G33-6-01	0 to 0.6			
G33-10-01	0 to 1.0			
GA33-2-01	0 to 0.2			
GA33-4-01	0 to 0.4			
GA33-7-01	0 to 0.7			
GA33-10-01	0 to 1.0			

Note) Do not apply pressure more than the maximum display pressure. This will cause a malfunction.

Model (Made to Order)

Model	Pressure range ^{Note)}	Indication unit	Connection thread	Note
	MPa			
G33-2-01-X2	0 to 0.2	MPa	R 1/8	X2: Stud parts electroless nickel plated
G33-3-01-X2	0 to 0.3			
G33-4-01-X2	0 to 0.4			
G33-6-01-X2	0 to 0.6			
G33-10-01-X2	0 to 1.0			
GA33-2-01-X2	0 to 0.2			X2: Stud parts nickel plated
GA33-4-01-X2	0 to 0.4			
GA33-7-01-X2	0 to 0.7			
GA33-10-01-X2	0 to 1.0			
G33-10-01-X4	0 to 1.0			

X4: Oil-free (Wetted parts degreasing)

Note) Do not apply pressure more than the maximum display pressure. This will cause a malfunction.

How to Order

G **□** **33** **□** **01** **□**

- Pressure gauge**
- Frame type**
- Connection thread**
- Max. display pressure**
- Model**
- Option**

Symbol	Type
Nil	Back side thread
A	Vertical side thread

Symbol	Size
01	R 1/8

Symbol	Unit: MPa
2	0.2
3	0.3
4	0.4
6	0.6
7	0.7
10	1.0

Symbol	Specifications
Nil	—
X2	Stud parts electroless nickel plated
X4	Oil-free (Wetted parts degrease washing)

Note 1) X3 (Wetted parts stainless steel) specifications is not available.
 Note 2) Please contact SMC separately for pressure range of GA33 between 0 and 0.6 MPa.