






Pressure Gauge Guide

Pressure Gauge for General Purpose


Outside diameter	Model	Type	Indication precision ±% FS	Pressure range MPa	Connection thread	Material			Indication ⁽¹⁾ unit	Attachment ⁽²⁾
						Case	Clear cover	Stud		
	ø15 G15	Back side thread	5	0 to 1.0	R 1/8 M5 (Female thread)	Zinc die-casted (Black graphite coated)	Poly-carbonate	Zinc die-casted (Black graphite coated)	MPa	—
	ø26 G27	Back side thread							0 to 1.0	
	ø37.5 G36	Back side thread	3	0 to 0.2 0 to 0.4 0 to 0.7 0 to 1.0 0 to 1.5	R 1/8	Aluminum die-casted (Black disulfide molybdenum coated) Rolled steel (Black melamine painted)	Poly-carbonate	Aluminum die-casted (Black disulfide molybdenum coated)	MPa	—
	GA36	Vertical side thread						Brass		
	ø42.5 G46	Back side thread	3	0 to 0.2 0 to 0.4 0 to 0.7 0 to 1.0 0 to 1.5	R 1/8 R 1/4	Aluminum die-casted (Black disulfide molybdenum coated) Rolled steel (Black melamine painted)	Poly-carbonate	Aluminum die-casted (Black disulfide molybdenum coated)	MPa	Cover ring assembly
	GA46	Vertical side thread						Brass		—
	ø30 G33	Back side thread	3	0 to 0.2 0 to 0.3 0 to 0.4 0 to 0.6 0 to 0.7 0 to 1.0	R 1/8	Stainless steel	Glass	Brass	MPa	—
	GA33	Vertical side thread								
	ø43 G43	Back side thread								

Note 1) Please consult with SMC for other scale indication units and connecting thread "NPT".
 Note 2) Possible for use in panel mounting.
 Note 3) Please contact SMC for the pressure range 0 to 0.6 MPa of GA33.

Oil-free/External Parts Copper-free Pressure Gauge


Outside diameter	Model	Type	Indication precision ±% FS	Pressure range MPa	Connection thread	Material			Indication ⁽¹⁾ unit	Attachment ⁽²⁾
						Case	Clear cover	Stud		
	ø42.5 G46E	Back side thread	3	0 to 0.2 0 to 0.4 0 to 0.7 0 to 1.0 0 to 1.5	R 1/8 R 1/4	Rolled steel (Black melamine painted)	Poly-carbonate (Hard coated)	Brass (Electroless nickel plated)	MPa	Cover ring assembly

Pressure Gauge for Clean Series (10-Series)

Outside diameter	Model	Type	Indication precision ±% FS	Pressure range MPa	Connection thread	Material			Indication ⁽¹⁾ unit	Attachment
						Case	Clear cover	Stud		
	ø44 G49	Back side thread	3	0 to 0.4 0 to 0.7 0 to 1.0	R 1/4	Zinc die-casted (Chrome plated)	Glass	Brass (Nickel plated)	MPa	—


Note 1) Please consult with SMC for other scale indication units and connecting thread "NPT".
 Note 2) Possible for use in panel mounting.

Pressure Gauge for Clean Regulator

Outside diameter	Model	Type	Indication precision ±% FS	Pressure range MPa	Connection thread	Material			Indication ⁽¹⁾ unit	Attachment
						Case	Clear cover	Stud		
	ø42.5 G46-SRA, B	Back side thread	3	0 to 0.2 0 to 0.4 0 to 0.7 0 to 1.0 0 to 1.5	R 1/8 R 1/4	Stainless steel (Black melamine painted)	Poly-carbonate (Hard coated)	Stainless steel	MPa	Cover ring assembly

Note 1) Please consult with SMC for other scale indication units and connecting thread "NPT".
 Note 2) Possible for use in panel mounting.

Pressure Gauge with Switch

Outside diameter	Model	Type	Indication precision ±% FS	Pressure range MPa	Connection thread	Material			Indication ⁽¹⁾ unit	Attachment ⁽²⁾
						Case	Clear cover	Stud		
	ø42.5 GP46	Back side thread	3	0 to 1.0	R 1/8 R 1/4	Rolled steel (Black melamine painted)	Poly-carbonate	Brass	MPa	Cover ring assembly

Note 1) Please consult with SMC for other scale indication units and connecting thread "NPT".
 Note 2) Possible for use in panel mounting.

Pressure Gauge for Clean Series (10-series)

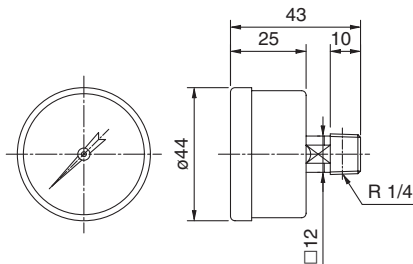
G49

O.D: ø44



- Be sure to read the precautions on page 14-11-15 for selection and installation.

Dimensions



Standard Specifications

Installation of a filter on the breathing hole (filtration 3 μm) enables an unit to curb particle generation from the pressure gauge inside.

Model		G49
Type		Back side thread
Port size ⁽¹⁾		R 1/4
Fluid ⁽²⁾		Air
Indication precision		±3% F.S. (Full span)
Material	Case (Surface treatment)	Zinc die-casted (Chromate plated)
	Clear cover	Glass
	Stud (Surface treatment)	Brass (Nickle plated for external parts only)
	Bourdon tube	Brass ⁽³⁾
Weight (kg)		0.095

Note 1) When mounting a pressure gauge, use caution not to tighten excessively. Excessive tightening will cause product failure. Use a pipe tape for sealing. Recommended tightening torque: Set between 12 and 14 N·m.

Note 2) When fluid is water, use G46-□-X3. Wetted parts of G46-□-X3 are made of Stainless steel. Use caution as some corrosion may be caused by water. Standard G49 pressure gauge contact area is made of brass. When using water, use caution not to apply water hammer. Similarly, when using other fluids, consult SMC for fluid compatibility information concerning corrosive potential.

Note 3) Bourdon tube and internal movable parts (gear, etc.) are made of brass, and are not nickel plated.

Model (Standard)

Model	Pressure range ^{Note)}	Indication unit	Connection thread	Note
	MPa			
G49-4-02	0 to 0.4	MPa	R 1/4	—
G49-7-02	0 to 0.7			
G49-10-02	0 to 1.0			

Note) Do not apply pressure more than the maximum display pressure. This will cause a malfunction.

How to Order

G 49 — 10 — 02 — X3

- Pressure gauge Size**

Symbol	Outside diameter
49	ø44
- Max. display pressure**

Symbol	Unit: MPa
4	0.4
7	0.7
10	1.0
- Connection thread**

Symbol	Size
02	R 1/4
- Option**

Symbol	Specifications
Nil	—
X3	Wetted parts stainless steel ⁽²⁾

Note 1) Cover ring assembly is not available.
 Note 2) Movable parts (gear, etc) inside pressure gauge are made of brass.
 Note 3) Part number for pressure gauge with MPa-psi units is G49-P***-X30. This will no longer be sold for use in Japan after the new Weight and Measure Act has been implemented (October, 1999).

F.R.L.

AV

AU

AF

AR

IR

VEX

AMR

ITV

IC

VBA

VE□

VY1

G

PPA

AL