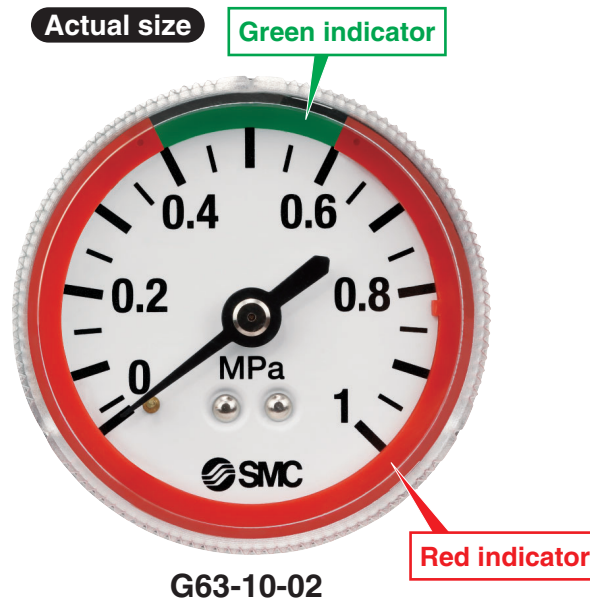
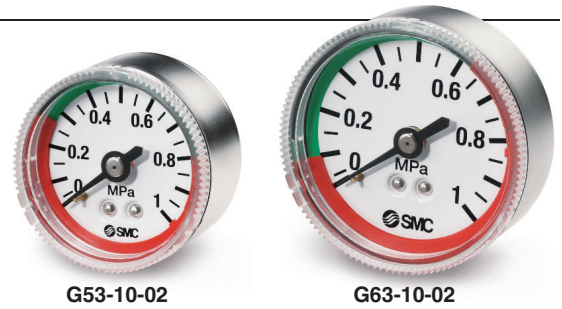


Pressure Gauge with Color Zone Limit Indicator

- Large size: Ø 51, Ø 63
- Indicator can be adjusted to highlight preferred range



Standard Specifications

Model		G53-L	G63-L
Type		Back side thread	
Connection thread*1		R1/8, R1/4	
Fluid*2		Air	
Indication precision*3		±3 %F.S. (Full span)	
Material	Case	Stainless steel	
	Clear cover	Polycarbonate (Part no.: G53-00-00-3)	Polycarbonate (Part no.: G63-00-00-3)
	Stud	Brass	
	Bourdon tube	Brass	
Weight [kg]		0.093	0.107

- Caution for handling: Avoid freezing as this may cause a malfunction.
- *1 When mounting a pressure gauge, use caution not to tighten it excessively. Excessive tightening will damage the product. Use sealant tape for sealing.
- *2 Before using with other fluids, please contact SMC for fluid compatibility information concerning corrosive potential.
- *3 The guaranteed temperature range is 23 °C ±5 °C.

Model (Standard)

Model	Pressure range*1	Green zone setting range		Indication unit	Connection thread
	MPa	Minimum setting range [MPa]	Maximum setting range [MPa]		
G53-2-01 to 02-L	0 to 0.2	0.01	0.1	MPa	R1/8, R1/4
G53-4-01 to 02-L	0 to 0.4	0.02	0.2		
G53-7-01 to 02-L	0 to 0.7	0.05	0.35		
G53-10-01 to 02-L	0 to 1.0	0.05	0.5		
G63-10-01 to 02-L	0 to 1.0	0.05	0.5		

*1 Do not apply any amount of pressure that exceeds the maximum display pressure. This will cause a malfunction.

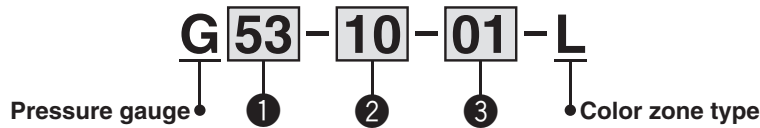
G53-L/G63-L Series



18-EU699-UK

G53-L/G63-L Series

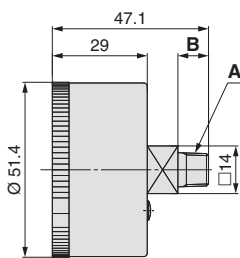
How to Order



	Symbol	Description	①	
			Size	
			G53	G63
			+	
②	Max. display pressure	2	●	—
		4	●	—
		7	●	—
		10	●	●
			+	
③	Connection thread	01	●	●
		02	●	●

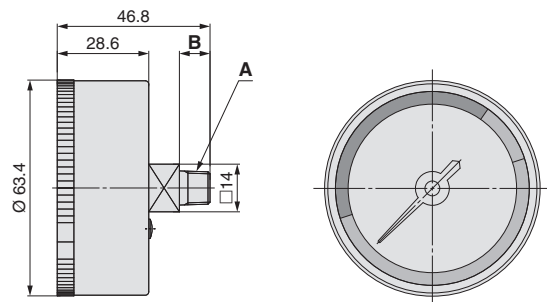
Dimensions

G53-□-01 to 02-L



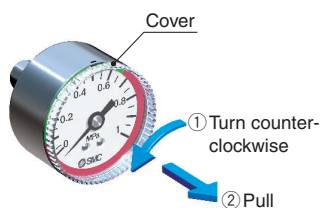
Part no.	A	B
G53-□-01-L	R1/8	9
G53-□-02-L	R1/4	11

G63-10-01 to 02-L

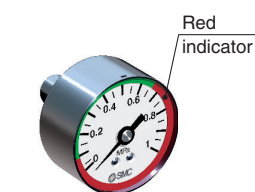


Part no.	A	B
G63-10-01-L	R1/8	9
G63-10-02-L	R1/4	11

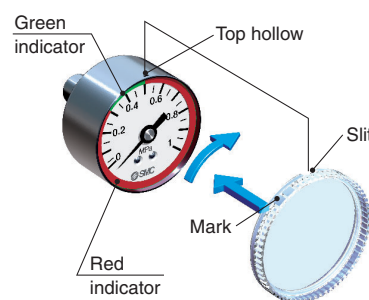
Procedure for Setting the Pressure Control Range (Green Zone)



1. ① Turn the cover counterclockwise until it stops. ② Then, remove it by pulling it toward you.



2. Set the indicator (red) so that the needle is not bent and the dial plate is not damaged.



3. After completing the setting, replace the cover. Attach the cover by aligning the cutout in the cover to the groove on the top of the silver case. Turn the cover clockwise until it stops. Make sure that the matching mark on the cover is aligned with the groove on the top of the case.

SMC Corporation

SMC CORPORATION
 Akihabara UDX 15F, 4-14-1, Sotokanda, Chiyoda-ku, Tokyo 101-0021, JAPAN
 Phone: 03-5207-8249 FAX: 03-5298-5362
 SMC CORPORATION All Rights Reserved

European Marketing Centre (EMC)

Zuazobidea 14, 01015 Vitoria
 Tel: +34 945-184 100 Fax: +34 945-184 124
 URL <http://www.smc.eu>