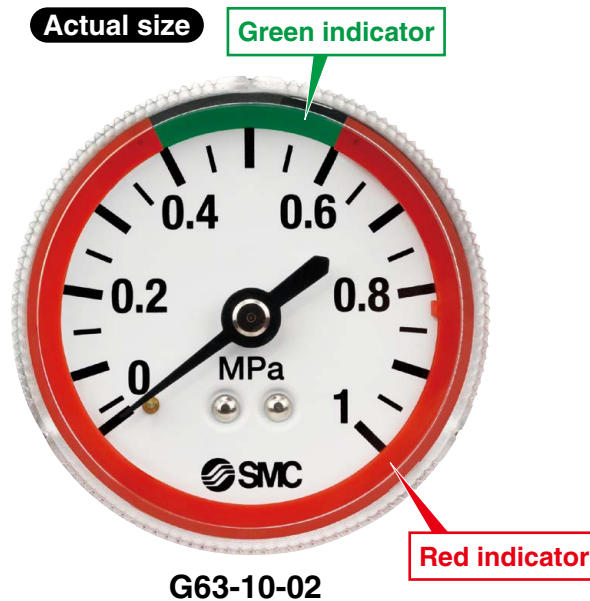


Pressure Gauge with Color Zone Limit Indicator

- Large size: $\varnothing 51$, $\varnothing 63$
- Indicator can be adjusted to highlight preferred range



Standard Specifications

Model		G53-L	G63-L
Type		Back side thread	
Connection thread*1		R1/8, R1/4	
Fluid*2		Air	
Indication precision*3		$\pm 3\%$ F.S. (Full span)	
Material	Case	Stainless steel	
	Clear cover	Polycarbonate (Part no.: G53-00-00-3)	Polycarbonate (Part no.: G63-00-00-3)
	Stud	Brass	
	Bourdon tube	Brass	
Weight [kg]		0.093	0.107

• Caution for handling: Avoid freezing as this may cause a malfunction.

*1 When mounting a pressure gauge, use caution not to tighten it excessively. Excessive tightening will damage the product.
Use sealant tape for sealing.

*2 Before using with other fluids, please contact SMC for fluid compatibility information concerning corrosive potential.

*3 The guaranteed temperature range is $23^{\circ}\text{C} \pm 5^{\circ}\text{C}$.

Model (Standard)

Model	Pressure range*1	Green zone setting range		Indication unit	Connection thread
	MPa	Minimum setting range [MPa]	Maximum setting range [MPa]		
G53-2-01 to 02-L	0 to 0.2	0.01	0.1	MPa	R1/8, R1/4
G53-4-01 to 02-L	0 to 0.4	0.02	0.2		
G53-7-01 to 02-L	0 to 0.7	0.05	0.35		
G53-10-01 to 02-L	0 to 1.0	0.05	0.5		
G63-10-01 to 02-L	0 to 1.0	0.05	0.5		

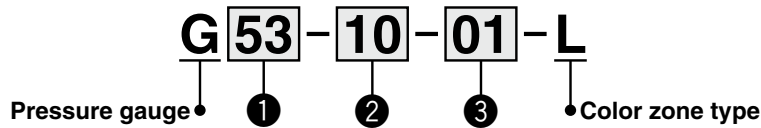
*1 Do not apply any amount of pressure that exceeds the maximum display pressure. This will cause a malfunction.

G53-L/G63-L Series



G53-L/G63-L Series

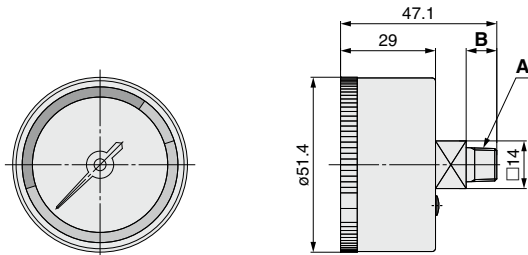
How to Order



	Symbol	Description	①		
			Size		
			G53	G63	
	+				
②	Max. display pressure	2	0.2 MPa	●	—
		4	0.4 MPa	●	—
		7	0.7 MPa	●	—
		10	1.0 MPa	●	●
	+				
③	Connection thread	01	R1/8	●	●
		02	R1/4	●	●

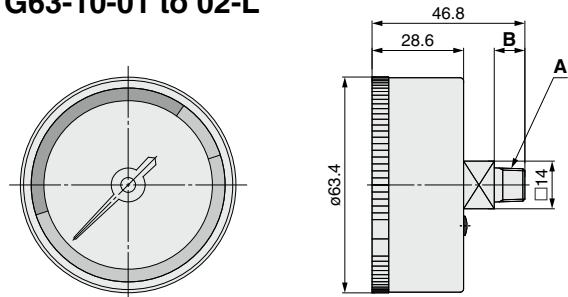
Dimensions

G53-□-01 to 02-L



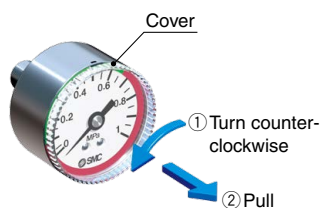
Part no.	A	B
G53-□-01-L	R1/8	9
G53-□-02-L	R1/4	11

G63-10-01 to 02-L

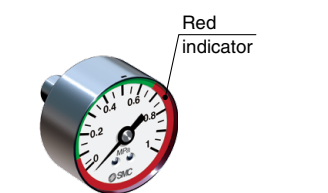


Part no.	A	B
G63-10-01-L	R1/8	9
G63-10-02-L	R1/4	11

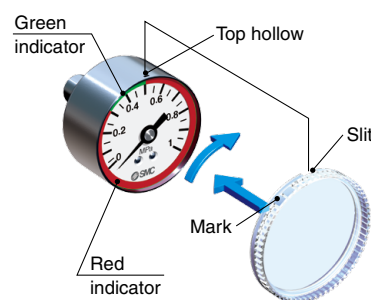
Procedure for Setting the Pressure Control Range (Green Zone)



1. ① Turn the cover counterclockwise until it stops. ② Then, remove it by pulling it toward you.



2. Set the indicator (red) so that the needle is not bent and the dial plate is not damaged.



3. After completing the setting, replace the cover. Attach the cover by aligning the cutout in the cover to the groove on the top of the silver case. Turn the cover clockwise until it stops. Make sure that the matching mark on the cover is aligned with the groove on the top of the case.

⚠ Safety Instructions Be sure to read the "Handling Precautions for SMC Products" (M-E03-3) and "Operation Manual" before use.

SMC Corporation

Akihabara UDX 15F,
4-14-1, Sotokanda, Chiyoda-ku, Tokyo 101-0021, JAPAN
Phone: 03-5207-8249 Fax: 03-5298-5362
<http://www.smcworld.com>
© 2018 SMC Corporation All Rights Reserved

Specifications are subject to change without prior notice and any obligation on the part of the manufacturer.

D-G

Printing WY 9120KS Printed in Japan.