



Electro-Pneumatic Regulator - Series ITV

Provides a controlled output pressure proportional to an electrical signal

- Vacuum and positive pressure models with multiple flow ranges
- Feedback sensor ensures tight linearity and repeatability
- Programmable pressure range, gain, and sensitivity
- Digital switch and analog signal outputs
- Fieldbus compliant models available, plus RS-232 serial



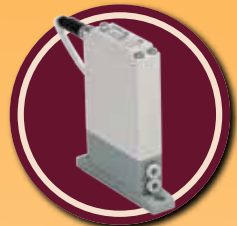
Standard

Fieldbus Compliant

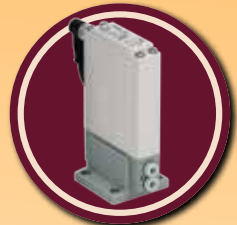
RoHS
Compliant



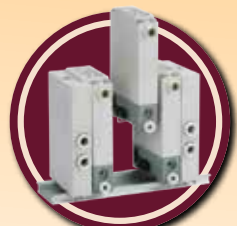
ITV0000
Low Flow



Flat Bracket

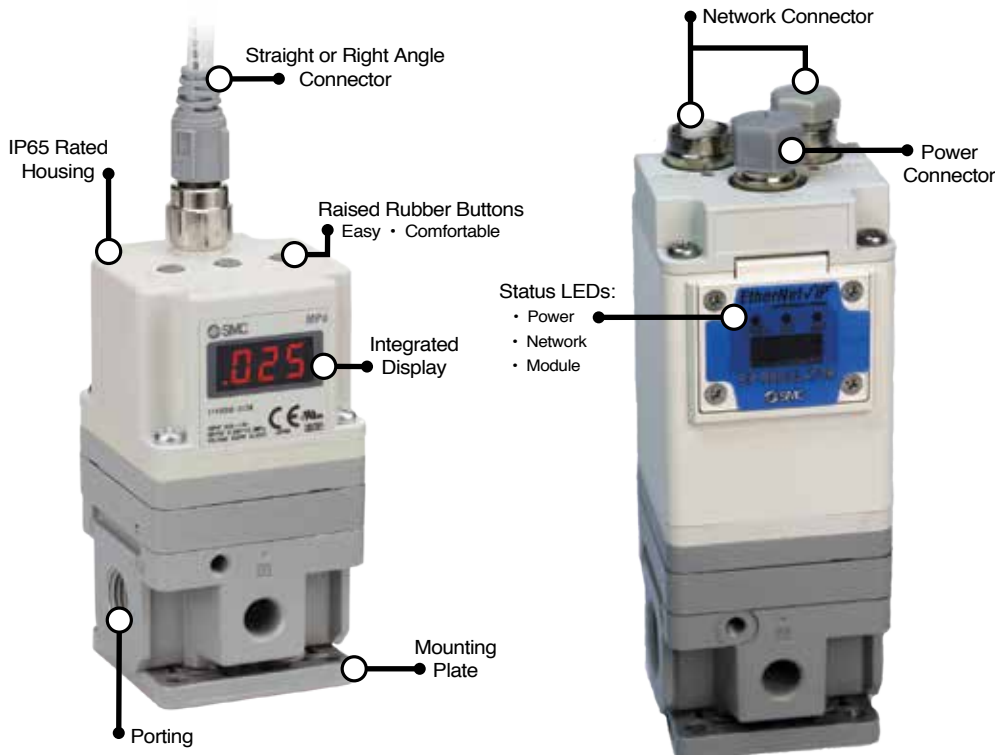


L Bracket



Manifold Mount

NF308-A



Related Products

ISE40A

- Digital Pressure Switch
- IP65



EX600

- Serial Interface Valve Module
- IP67



For 3D CAD Information:
www.smcusa.com/cad



SMC Corporation of America
 10100 SMC Blvd.
 Noblesville, IN 46060
www.smcusa.com

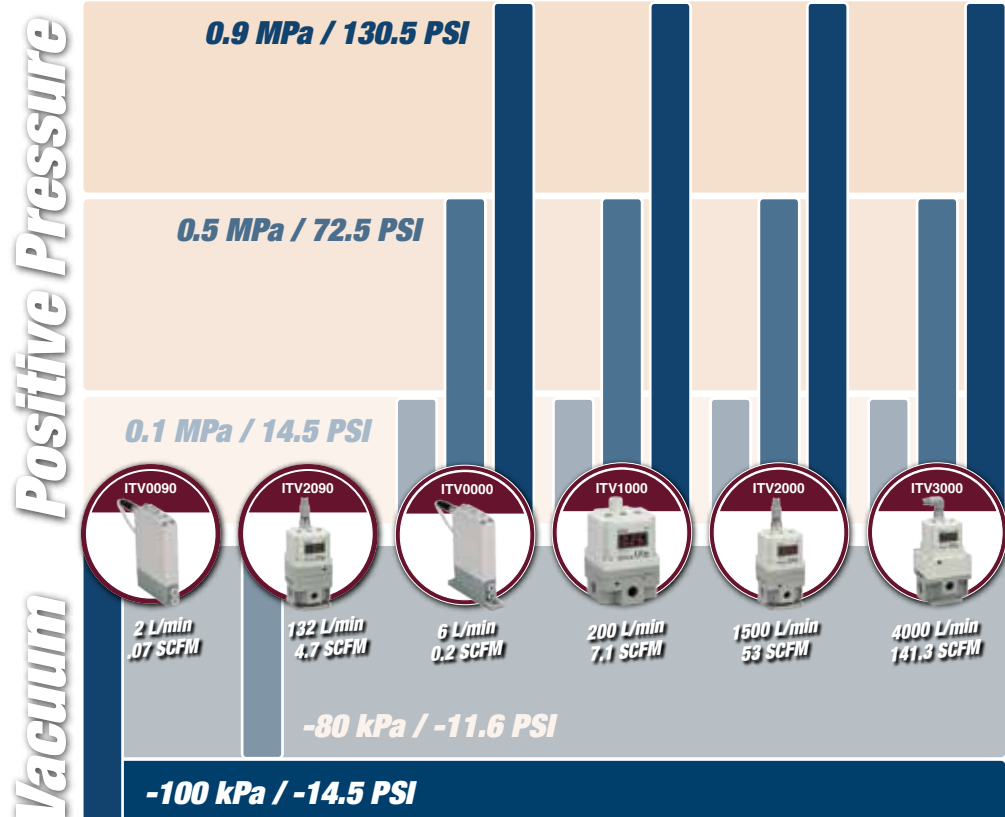
(800) SMC.SMC1
(800 - 762 - 7621)

SMC Pneumatics (Canada) Ltd.
www.smc Pneumatics.ca

e-mail: sales@smcusa.com
 For International inquires:
www.smcworld.com

All reasonable efforts to ensure the accuracy of the information detailed in this flyer were made at the time of publishing. However, SMC can in no way warrant the information herein contained as specifications are subject to change without notice.

Pressure and Flow Ranges



ITVH: High Pressure E-P Regulator

For General High Pressure Applications



Max. supply pressure: 3.0 MPa
 435 PSI

Max. set pressure: 2.0 MPa
 290 PSI

Max. flow rate: 3000 L/min
 106 SCFM

Linearity: ± 1% F.S.

Repeatability: ± 1% F.S.

Sensitivity: ± 1% F.S.

Display accuracy: ± 2% F.S.