

S Couplers Stainless Steel Type Series **KKA**



Specifications

Fluid	Water/Air
Operating pressure range <small>(Note)</small>	KKA3: -100kPa to 1.0MPa KKA4-6: 0 to 1MPa
Proof pressure	10MPa
Ambient and fluid temperature	-5 to 100°C (No freezing) <small>Note) Do not use with steam.</small>
Non-greased specification	No grease is used. Rubber: Fluorine coated, (Metal sliding parts: Plated with fluorine-contained material)
Material	Metal part: SUS304, Rubber material: Fluoro rubber (FKM)
Seal	With male thread seal

Note) Do not use the S couplers with a leak tester or for vacuum retention because they are not guaranteed for zero leakage.

Performance

Plug and socket connection	One-touch connection and release
Check valve	Plug and socket are available with and without check valves.

Note) Series KKA cannot be connected with Series KK or Series KKH.

Characteristics with Check Valve on Both Sides

Body size	Liquid dripping cm ³ at each removal	Aeration cm ³ at each removal
KKA3	0.02	0.1
KKA4	0.04	0.1
KKA6	0.06	0.2

Liquid dripping:

Volume of water leakage at the time when the plug and socket are uncoupled.

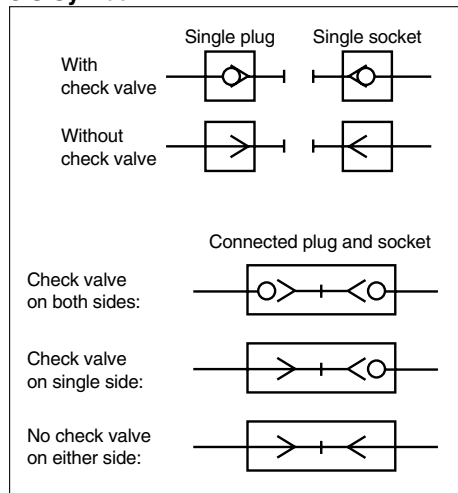
Aeration:

Volume of external air entrained when the plug and socket are connected.

Effective Area

Built-in check valve	Plug	Socket	Effective area mm ²
Plug: With check valve Socket: With check valve	KKA3P-01F	KKA3S-01F	16.2
	KKA4P-02F	KKA4S-02F	26.5
	KKA6P-04F	KKA6S-04F	56.4
Plug: Without check valve Socket: With check valve	KKA3P-01M-1	KKA3S-01M	19.0
	KKA4P-02M-1	KKA4S-02M	30.5
	KKA6P-04M-1	KKA6S-04M	59.5
Plug: Without check valve Socket: Without check valve	KKA3P-01M-1	KKA3S-01M-1	20.8
	KKA4P-02M-1	KKA4S-02M-1	38.9
	KKA6P-04M-1	KKA6S-04M-1	79.3

JIS Symbol



How to Order

KKA 4 P-02 M-1

Body size	
3	1/8
4	1/4
6	1/2

Socket/Plug designation	
P	Plug
S	Socket

Symbol	Thread size
01	R, Rc 1/8
02	R, Rc 1/4
03	R, Rc 3/8
04	R, Rc 1/2
06	R, Rc 3/4

Built-in check valve	
Nil	With check valve
1	Without check valve

Symbol	Type
M	Mail thread (with seal)
F	Female thread

Built-in check valve	Plug	Socket	Availability
Yes	Yes	Yes	○
No	Yes	Yes	○
No	No	No	○
Yes	No	No	×

Note) A plug with check valve should be used in combination with a socket with check valve.
If a socket without check valve is used, the check valve of the plug will not open.