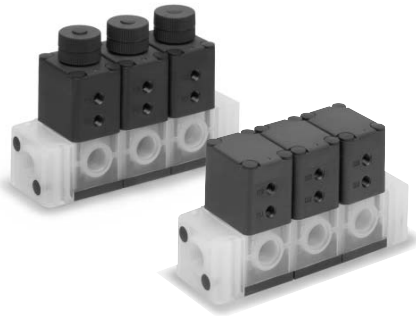


Series LVA Manifolds

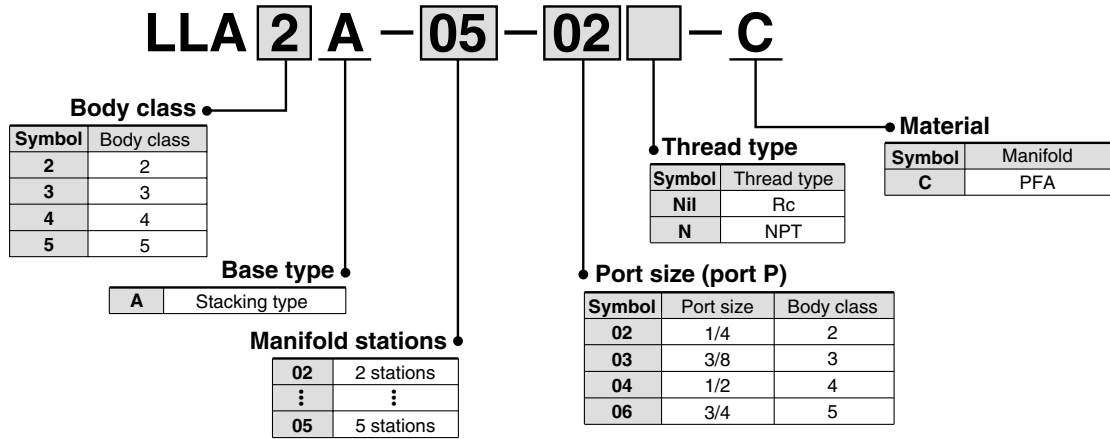


Manifold Specifications

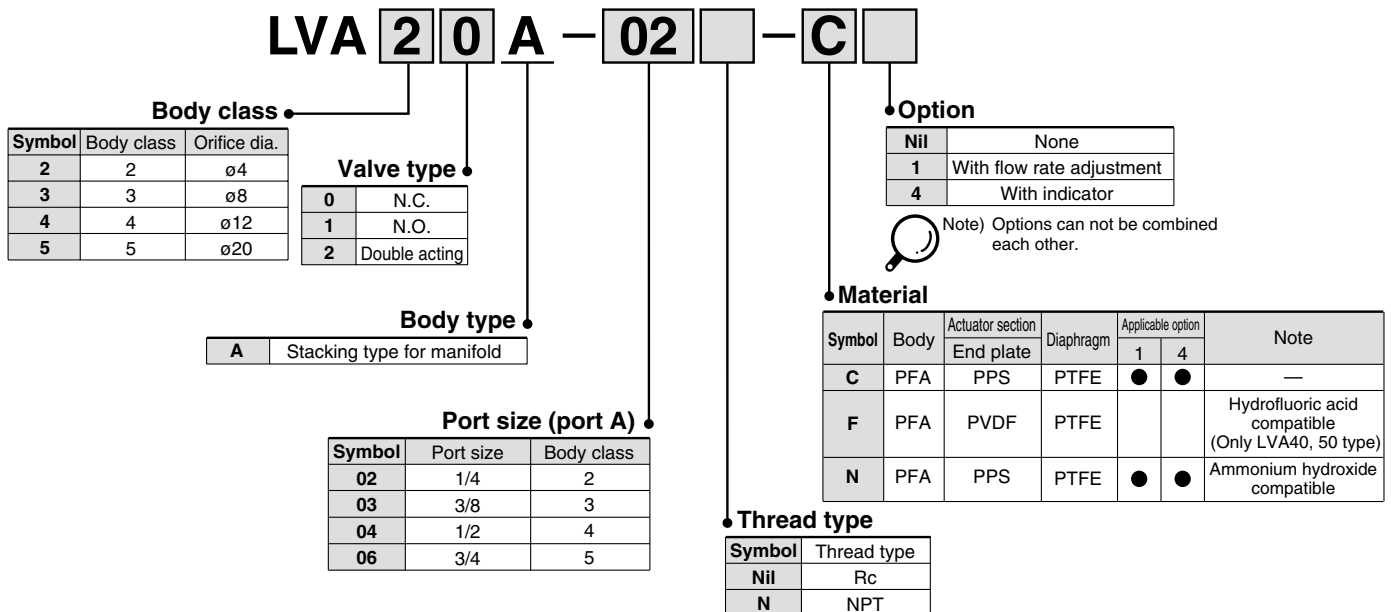
Model	LLA2A	LLA3A	LLA4A	LLA5A
Manifold type	Stacking type			
P (IN), A (OUT) type	Common IN/Individual OUT			
Valve stations	2 to 5 stations			
Port size (port P)	1/4	3/8	1/2	3/4
Port size (port A)	1/4	3/8	1/2	3/4

Note 1) Contact SMC if the manifold will be used with vacuum and A → P flow.

How to Order Manifold Base



How to Order Valve

VC

VDW

VQ

VX2

VX

VX3

VXA

VN

LVC

LVA

LVH

LVD

LVQ

LQ

LVN

TI/
TIL

PA

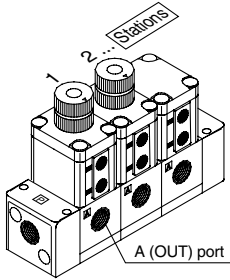
PAX

PB

Series LVA

How to Order Manifold Assembly (Example)

Enter the part number of the valves to be mounted together with the manifold base part number.



Stations are counted from station 1 on the left side, with the A (OUT) ports in front.

<Example>

- LLA2A-03-02-C 1 set 1 set Manifold base part no.
- * LVA20A-02-C1 2 sets 2 sets Valve part no. (stations 1 & 2)
- * LVA20A-02-C 1 set 1 set Valve part no. (station 3)

Add the * symbol at the beginning of part numbers for valves, etc. to be mounted.

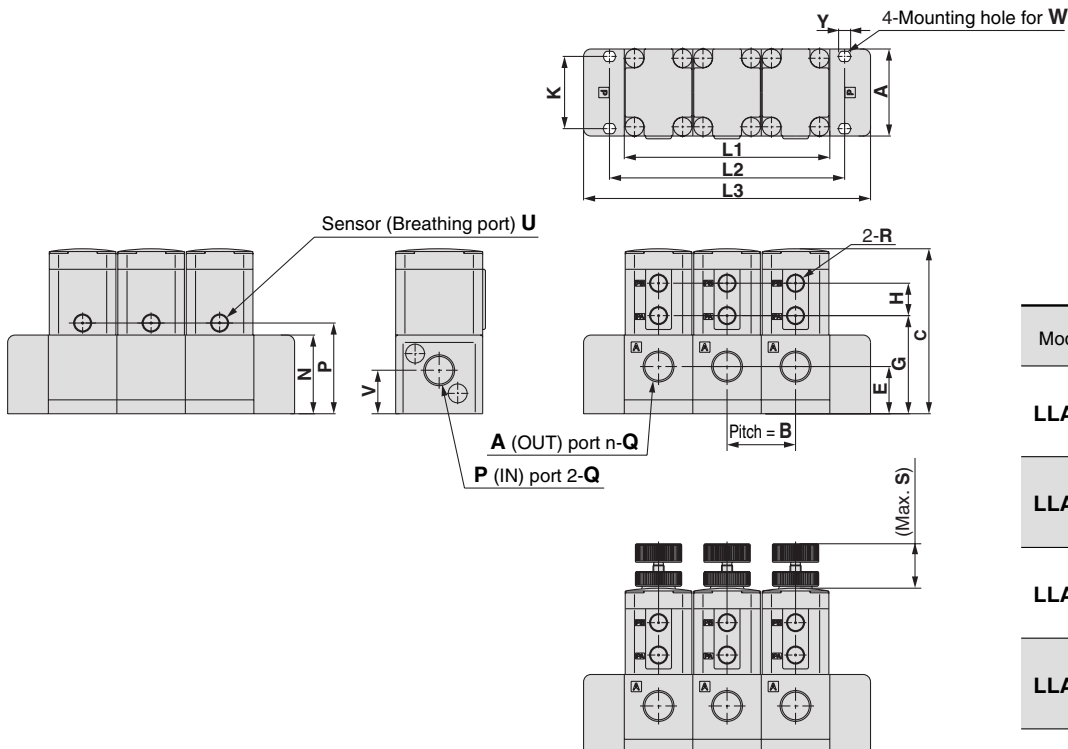
Enter together in order counting from station 1 on the left side, with the A (OUT) ports in front.

Manifold variations

		Model	LVA20A	LVA30A	LVA40A	LVA50A
		Manifold material	PFA			
		Port size	1/4	3/8	1/2	3/4
		Orifice diameter	ø4	ø8	ø12	ø20
Type	Symbol	Valve type				
Basic type		N.C.	○	○	○	○
		N.O.	○	○	○	○
		Double acting	○	○	○	○
With flow rate adjustment		N.C.	○	○	○	○
		Double acting	○	○	○	○

Dimensions

LLA□A-□Stations-□□□-C



Dimensions (mm)

Model	S
LLA2A	11.5
LLA3A	24
LLA4A	29
LLA5A	34.5

(mm)

Model	Station Symbol				
		2	3	4	5
LLA2A	L1	62	93	124	155
	L2	75	106	137	168
	L3	118	149	180	211
LLA3A	L1	74	111	148	185
	L2	90	127	164	201
	L3	118	155	192	229
LLA4A	L1	94	141	188	235
	L2	112	159	206	253
	L3	144	191	238	285
LLA5A	L1	118	177	236	295
	L2	140	199	258	317
	L3	178	237	296	355

Dimensions

(mm)

Model	A	B	C	E	G	H	K	M	N	P	Q	R	U	V	W	Y
LLA2A	50	31	68	20.5	41.5	13	18	4.5	34	35	Rc 1/4, NPT 1/4	M5 x 0.8	M3 x 0.5	19	M4	5.5
LLA3A	47	37	88.5	25.5	52.5	17.5	39	5.5	42.5	51.5	Rc 3/8, NPT 3/8	Rc 1/8 NPT 1/8	Rc 1/8 NPT 1/8	23.5	M5	6.5
LLA4A	60	47	103.5	29	62.5	18	50	6.5	48	62.5	Rc 1/2, NPT 1/2			26	M6	7.5
LLA5A	75	59	135.5	32.5	74.5	27.5	61		61	68.5	Rc 3/4, NPT 3/4			29	M6	7.5