

Series MB

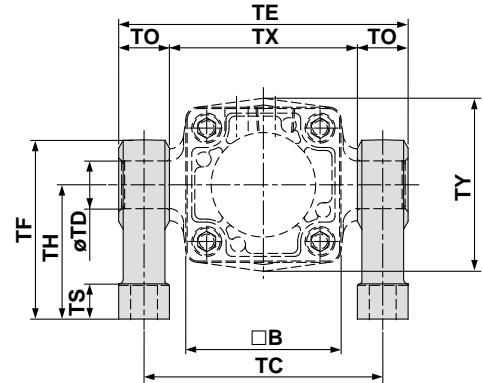
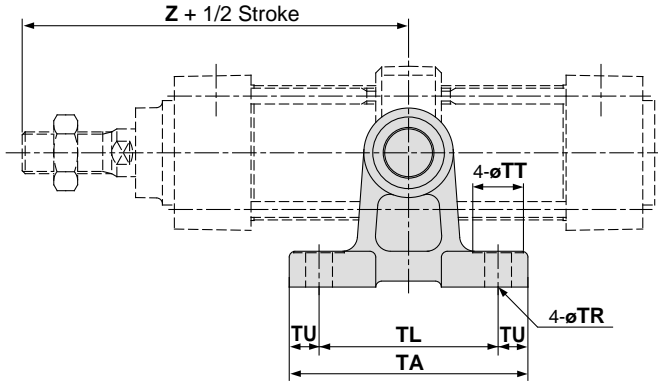
Trunnion/Double Clevis Pivot Bracket

Part No.

| Cylinder model | MB□32 | MB□40 | MB□50 | MB□63 | MB□80 | MB□100 |
|-----------------------------|--------|--------|--------|--------|--------|--------|
| Description | | | | | | |
| Trunnion pivot bracket (1) | MB-S03 | MB-S04 | | MB-S06 | | MB-S10 |
| Double clevis pivot bracket | MB-B03 | | MB-B05 | | MB-B08 | |

Note 1) When ordering a trunnion pivot bracket, order 2 pcs. for 1 cylinder.

Trunnion pivot bracket

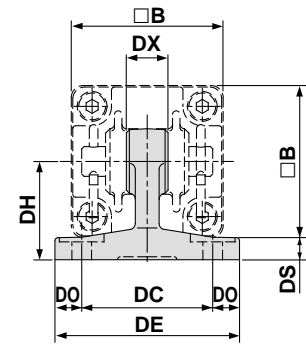
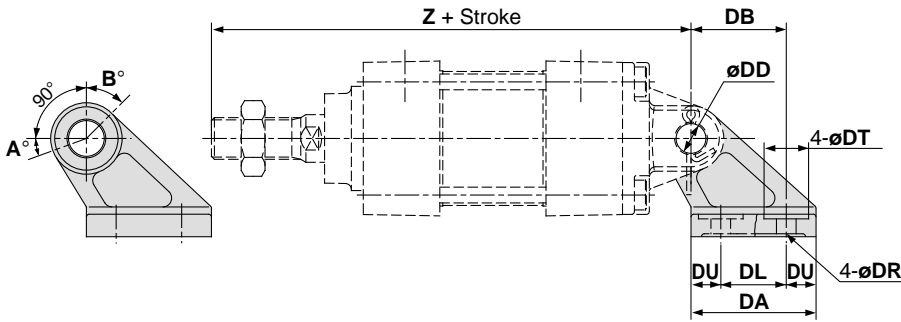


| Part No. | Bore size (mm) | □B | TA | TL | TU | TC | TX | TE | TO | TR | TT | TS | TH | TF | Z** | TDH10 |
|----------|----------------|-----|-----|----|-----|-----|-----|-----|----|------|----|----|----|-----|-----|-----------------------------------|
| MB-S03 | 32 | 46 | 62 | 45 | 8.5 | 62 | 50 | 74 | 12 | 7 | 13 | 10 | 35 | 47 | 89 | 12 ^{+0.070} ₀ |
| | 40 | 52 | 80 | 60 | 10 | 80 | 63 | 97 | 17 | 9 | 17 | 12 | 45 | 60 | 93 | 16 ^{+0.070} ₀ |
| MB-S04 | 50 | 65 | 80 | 60 | 10 | 92 | 75 | 109 | 17 | 9 | 17 | 12 | 45 | 60 | 105 | 16 ^{+0.070} ₀ |
| | 63 | 75 | 100 | 70 | 15 | 110 | 90 | 130 | 20 | 11 | 22 | 14 | 60 | 80 | 105 | 20 ^{+0.084} ₀ |
| MB-S06 | 80 | 95 | 100 | 70 | 15 | 130 | 110 | 150 | 20 | 11 | 22 | 14 | 60 | 80 | 129 | 20 ^{+0.084} ₀ |
| | 100 | 114 | 120 | 90 | 15 | 158 | 132 | 184 | 26 | 13.5 | 24 | 17 | 75 | 100 | 129 | 25 ^{+0.084} ₀ |

(mm)

| Without air cushion | |
|---------------------|-----|
| Bore size (mm) | Z |
| 32 | 92 |
| 40 | 96 |
| 50 | 109 |
| 63 | 109 |
| 80 | 134 |
| 100 | 134 |

Double clevis pivot bracket



| Part No. | Bore size (mm) | □B | DA | DB | DL | DU | DC | DX | DE | DO | DR | DT | DS | DH | Z* | DDH10 |
|----------|----------------|-----|----|----|----|------|----|----|-----|------|-----|----|----|----|-----|-----------------------------------|
| MB-B03 | 32 | 46 | 42 | 32 | 22 | 10 | 44 | 14 | 62 | 9 | 6.6 | 15 | 7 | 33 | 154 | 10 ^{+0.058} ₀ |
| | 40 | 52 | 42 | 32 | 22 | 10 | 44 | 14 | 62 | 9 | 6.6 | 15 | 7 | 33 | 158 | 10 ^{+0.058} ₀ |
| MB-B05 | 50 | 65 | 53 | 43 | 30 | 11.5 | 60 | 20 | 81 | 10.5 | 9 | 18 | 8 | 45 | 182 | 14 ^{+0.070} ₀ |
| | 63 | 75 | 53 | 43 | 30 | 11.5 | 60 | 20 | 81 | 10.5 | 9 | 18 | 8 | 45 | 182 | 14 ^{+0.070} ₀ |
| MB-B08 | 80 | 95 | 73 | 64 | 45 | 14 | 86 | 30 | 111 | 12.5 | 11 | 22 | 10 | 65 | 228 | 22 ^{+0.084} ₀ |
| | 100 | 114 | 73 | 64 | 45 | 14 | 86 | 30 | 111 | 12.5 | 11 | 22 | 10 | 65 | 228 | 22 ^{+0.084} ₀ |

(mm)

| Without air cushion | |
|---------------------|-----|
| Bore size (mm) | Z |
| 32 | 160 |
| 40 | 164 |
| 50 | 190 |
| 63 | 190 |
| 80 | 238 |
| 100 | 238 |

Rotating angle

| Bore size (mm) | A° | B° | A°+B°+90° |
|----------------|-----|-----|-----------|
| 32, 40 | 25° | 45° | 160° |
| 50, 63 | 40° | 60° | 190° |
| 80, 100 | 30° | 55° | 175° |

* Mounting plate

Model without air cushion is designed to include rubber bumpers. The overall length is longer than the cylinder with air cushion as follows because the bumpers are attached to the both sides of the piston; ø32, ø40: +6mm, ø50, ø63: +8mm, ø80, ø100: +10mm

** Trunnion pivot bracket

Model without air cushion is designed to include rubber bumpers. The overall length is longer than the cylinder with air cushion as follows because the bumpers are attached to the both sides of the piston; ø32, ø40: +3mm, ø50, ø63: +4mm, ø80, ø100: +5mm