

# Magnet Gripper

## Adsorbs and Holds with a Magnet

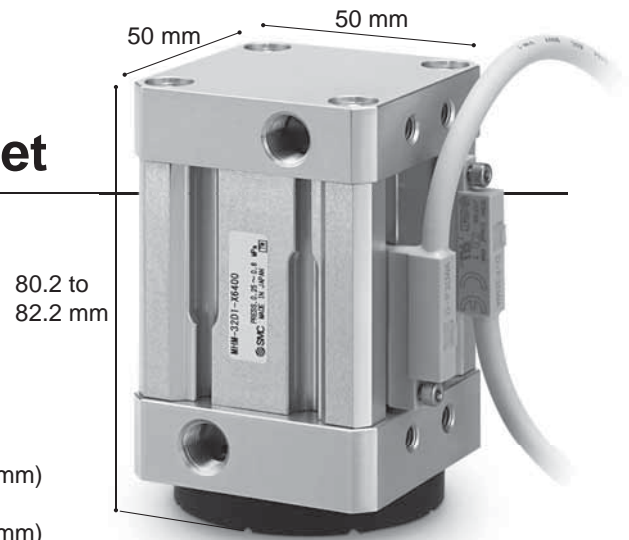
- **Steel plates can be transferred without a vacuum.**

Supports workpieces with holes and uneven surfaces where a vacuum pad cannot be used.

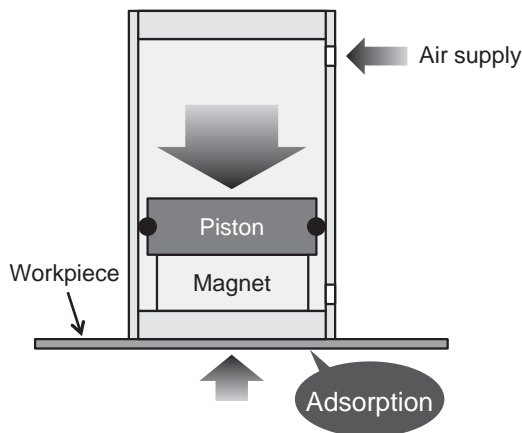
- **Holds workpieces even when air is shut off.**

- **High holding force 80 N** (Workpiece plate thickness: 0.6 mm)  
**120 N** (Workpiece plate thickness: 1.4 mm)

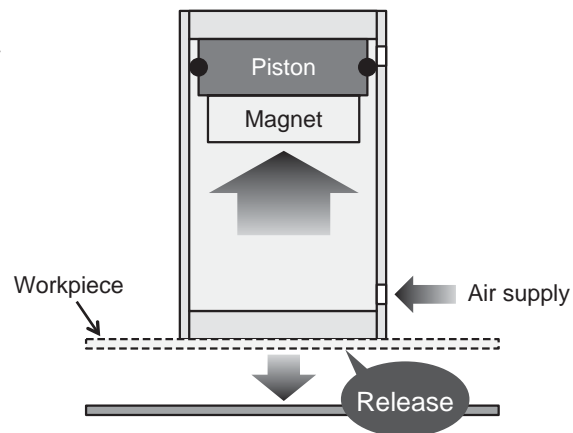
- **Residual holding force 0.3 N or less** (Reduces workpiece release time)



Workpiece adsorption/holding



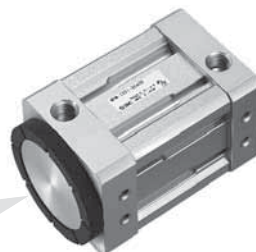
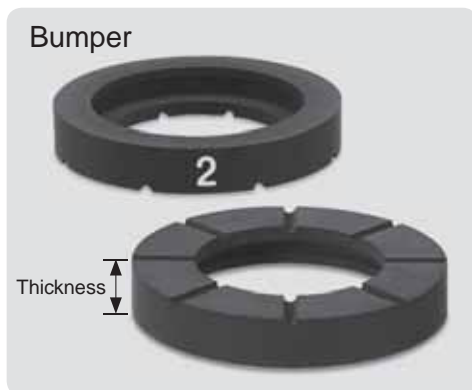
Workpiece release



- **Holding force can be adjusted with a bumper with 3 types of thicknesses.**

Thickness	Holding force
6 mm	80 N
7 mm	50 N
8 mm	30 N

Prevents deformation of workpieces and accidental adsorption of a second piece. Fluororubber with excellent oil resistance is used. Has a contact surface structure which reduces sideslip. Bumper can be replaced without a tool.



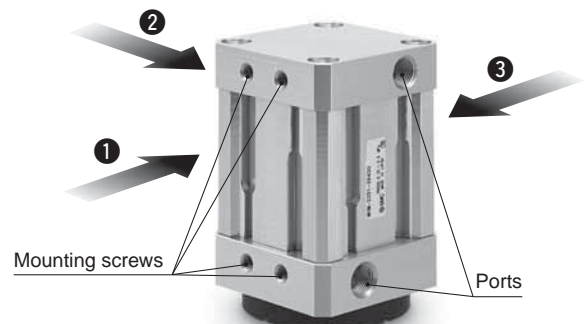
- **Auto switches can be mounted on 4 surfaces.**

Magnetic field resistant auto switch:  
D-P3DWA

Small auto switch:  
D-M9□V



- **Mountable on 3 surfaces.**



**MHM-X6400**

# Magnet Gripper MHM-X6400

## How to Order

MHM-32D **1** - **P3DWAL**    - X6400

### Holding force

Symbol	Holding force
1	80 N
2	50 N
3	30 N

### Number of auto switches

—	2
S	1

### Auto switch

—	Without auto switch
P3DWA□	D-P3DWA□
M9□V	D-M9□V□

\*: For applicable auto switches, refer to the table below.



**Applicable Auto Switches:** Refer to Auto Switch Guide on [www.smc.eu](http://www.smc.eu) for further information on auto switches.  
**Magnetic Field Resistant Auto Switches**

Type	Auto switch model	Applicable magnetic field	Electrical entry	Indicator light	Wiring (Pin no. in use)	Load voltage	Lead wire length	Applicable load
Solid state auto switch	P3DWASC	AC magnetic field (Single-phase AC welding magnetic field)	Pre-wired connector	2-colour	2-wire (3-4)	24 V DC	0.3 m 0.5 m 3 m 5 m	Relay, PLC
	P3DWASE				2-wire (1-4)			
	P3DWA		Grommet		2-wire			
	P3DWAL							
	P3DWAZ							

### Small Auto Switches

Type	Special function	Electrical entry	Indicator light	Wiring (Output)	Load voltage		Auto switch model	Lead wire length [m]				Pre-wired connector	Applicable load	
					DC	AC		0.5 (-)	1 (M)	3 (L)	5 (Z)		IC circuit	Relay, PLC
Solid state auto switch	—	Grommet	Yes	3-wire (NPN)	24 V	—	M9NV	●	●	●	○	○		
				3-wire (PNP)				●	●	●	○	○		
				2-wire				●	●	●	○	○		
				3-wire (NPN)				●	●	●	○	○		
				3-wire (PNP)				●	●	●	○	○		
	2-wire			●	●	●		○	○	—				
	Diagnostic indication (2-colour indicator)			3-wire (NPN)	●	●		●	○	○	IC circuit			
				3-wire (PNP)	●	●		●	○	○	IC circuit			
				2-wire	●	●		●	○	○	—			
				3-wire (NPN)	○	○		●	○	○	IC circuit			
3-wire (PNP)		○	○	●	○	○	IC circuit							
Water resistant (2-colour indicator)	2-wire	○	○	●	○	○	—							
	3-wire (NPN)	○	○	●	○	○	IC circuit							
	3-wire (PNP)	○	○	●	○	○	IC circuit							
2-wire	○	○	●	○	○	—								

\*: Solid state auto switches marked with "○" are produced upon receipt of order.

\*: For details about auto switches with pre-wired connectors, refer to Auto Switch Guide.

\*: Auto switches are shipped together, but not assembled.

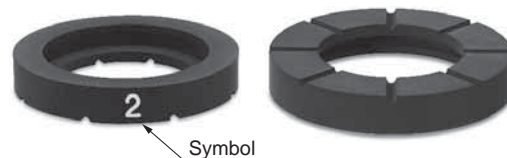
\*: Lead wire length symbols: 0.5 m ..... — (Example) M9NWV  
1 m ..... M (Example) M9NWVM  
3 m ..... L (Example) M9NWVL  
5 m ..... Z (Example) M9NWVZ

## Specifications

Action	Double acting	
Fluid	Air	
Operating pressure	0.25 to 0.6 MPa	
Ambient and fluid temperature	-10 to 60 °C (No freezing)	
Holding force	MHM-32D1-X6400	80 N
(Workpiece thickness: 0.6 mm)	MHM-32D2-X6400	50 N
	MHM-32D3-X6400	30 N
Residual holding force	0.3 N or less	
Lubrication	Non-lube	
Weight	475 g	

## Bumper Order No.

Symbol	Holding force	Model
1	80 N	MHM-A3201-1-X6400
2	50 N	MHM-A3201-2-X6400
3	30 N	MHM-A3201-3-X6400







#### SMC Corporation (Europe)

<b>Austria</b>	☎ +43 (0)2262622800	www.smc.at	office@smc.at
<b>Belgium</b>	☎ +32 (0)33551464	www.smc Pneumatics.be	info@smc Pneumatics.be
<b>Bulgaria</b>	☎ +359 (0)2807670	www.smc.bg	office@smc.bg
<b>Croatia</b>	☎ +385 (0)13707288	www.smc.hr	office@smc.hr
<b>Czech Republic</b>	☎ +420 541424611	www.smc.cz	office@smc.cz
<b>Denmark</b>	☎ +45 70252900	www.smc.dk.com	smc@smc.dk.com
<b>Estonia</b>	☎ +372 6510370	www.smc Pneumatics.ee	smc@smc Pneumatics.ee
<b>Finland</b>	☎ +358 207513513	www.smc.fi	smc.fi@smc.fi
<b>France</b>	☎ +33 (0)164761000	www.smc-france.fr	info@smc-france.fr
<b>Germany</b>	☎ +49 (0)61034020	www.smc.de	info@smc.de
<b>Greece</b>	☎ +30 210 2717265	www.smchellas.gr	sales@smchellas.gr
<b>Hungary</b>	☎ +36 23511390	www.smc.hu	office@smc.hu
<b>Ireland</b>	☎ +353 (0)14039000	www.smc Pneumatics.ie	sales@smc Pneumatics.ie
<b>Italy</b>	☎ +39 0292711	www.smcitalia.it	mailbox@smcitalia.it
<b>Latvia</b>	☎ +371 67817700	www.smc.lv	info@smc.lv

<b>Lithuania</b>	☎ +370 5 2308118	www.smclt.lt	info@smclt.lt
<b>Netherlands</b>	☎ +31 (0)205318888	www.smc Pneumatics.nl	info@smc Pneumatics.nl
<b>Norway</b>	☎ +47 67129020	www.smc-norge.no	post@smc-norge.no
<b>Poland</b>	☎ +48 222119600	www.smc.pl	office@smc.pl
<b>Portugal</b>	☎ +351 226166570	www.smc.eu	postpt@smc.smces.es
<b>Romania</b>	☎ +40 213205111	www.smcromania.ro	smcromania@smcromania.ro
<b>Russia</b>	☎ +7 8127185445	www.smc-pneumatik.ru	info@smc-pneumatik.ru
<b>Slovakia</b>	☎ +421 (0)413213212	www.smc.sk	office@smc.sk
<b>Slovenia</b>	☎ +386 (0)73885412	www.smc.si	office@smc.si
<b>Spain</b>	☎ +34 902184100	www.smc.eu	post@smc.smces.es
<b>Sweden</b>	☎ +46 (0)86031200	www.smc.nu	post@smc.nu
<b>Switzerland</b>	☎ +41 (0)523963131	www.smc.ch	info@smc.ch
<b>Turkey</b>	☎ +90 212 489 0 440	www.smc Pneumatik.com.tr	info@smc Pneumatik.com.tr
<b>UK</b>	☎ +44 (0)845 121 5122	www.smc Pneumatics.co.uk	sales@smc Pneumatics.co.uk