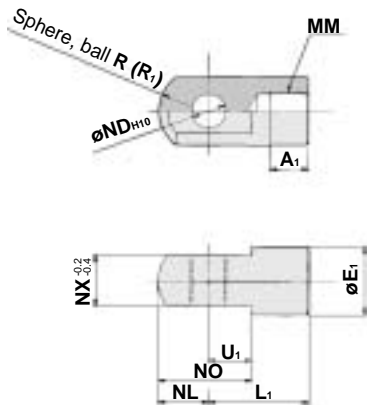


Single knuckle joint

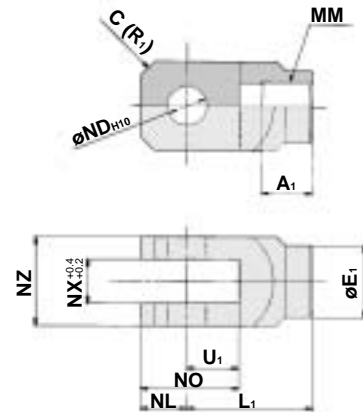


(mm)

Part no.	Size	A ₁	E ₁	L ₁	MM
I-MU02	25	10.5	16	27	M10 x 1.25
I-MU03	32	12	18	31	M12 x 1.25
I-MU04	40	14	20	36	M14 x 1.5
I-MU05	50	18	28	46	M18 x 1.5

Part no.	ND _{H10}	NL	NO	NX	R ₁	U ₁
I-MU02	8 ^{+0.058} ₀	8.5	19.5	9	8.5	11
I-MU03	10 ^{+0.058} ₀	10	24	11	10	14
I-MU04	10 ^{+0.058} ₀	11	26	13	11	15
I-MU05	14 ^{+0.070} ₀	16	36	16	16	20

Double knuckle joint



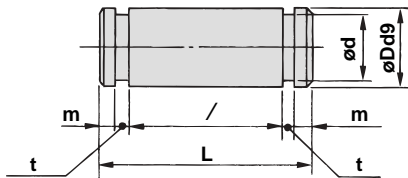
(mm)

Part no.	Size	A ₁	E ₁	L ₁	MM	ND _{H10}
Y-MU02	25	10.5	14	27	M10 x 1.25	8 ^{+0.058} ₀
Y-MU03	32	12	18	31	M12 x 1.25	10 ^{+0.058} ₀
Y-MU04	40	14	20	36	M14 x 1.5	10 ^{+0.058} ₀
Y-MU05	50	18	28	46	M18 x 1.5	14 ^{+0.070} ₀

Part no.	NL	NO	NX	NZ	R ₁	U ₁	Applicable pin no.
Y-MU02	8	21	9	18	3	13	CD-MU02
Y-MU03	10	24	11	22	4	14	CD-MU03
Y-MU04	10	27	13	26	5	17	CD-MU04
Y-MU05	16	39	16	32	6	23	CD-MU05

*Knuckle pin and snap ring are included.

Clevis pin and knuckle pin



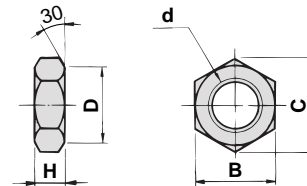
(mm)

Part no.	Size	Dd9	L	d	/
CD-MU02	25	8 ^{-0.040} _{-0.076}	23	7.6	18.2
CD-MU03	32	10 ^{-0.040} _{-0.076}	27	9.6	22.2
CD-MU04	40	10 ^{-0.040} _{-0.076}	31	9.6	26.2
CD-MU05	50	14 ^{-0.050} _{-0.093}	38	13.4	32.2

Part no.	m	t	Snap ring
CD-MU02	1.5	0.9	C8 type for pivot
CD-MU03	1.25	1.15	C10 type for pivot
CD-MU04	1.25	1.15	C10 type for pivot
CD-MU05	1.75	1.15	C14 type for pivot

*Included with the double clevis and double knuckle joint as standard.

Rod end nut



(mm)

Part no.	Size	d	H	B	C	D
NT-03	25	M10 x 1.25	6	17	19.6	16.5
NT-MU03	32	M12 x 1.25	7	19	21.9	18
NT-04	40	M14 x 1.5	8	22	25.4	21
NT-05	50	M18 x 1.5	11	27	31.2	26

*One piece is included with the rod end male thread as standard.