

# Plate Cylinder/Double Acting Single Rod

## Series MU



ø25, ø32, ø40, ø50, ø63

### How to Order

**Standard**

**With auto switch**

MU B 25 30 D M

MDU B 25 30 D M A73 S

Built-in magnet

Mounting

B	Basic
L	Axial foot
F	Front flange
G	Rear flange
C	Single clevis
D	Double clevis

Size

25	Equiv. ø25 piston area
32	Equiv. ø32 piston area
40	Equiv. ø40 piston area
50	Equiv. ø50 piston area
63	Equiv. ø63 piston area

Stroke (mm)

Refer to standard stroke on p.2.4-3.  
Refer to p.2.4-3 when using auto switch.

Action

D	Double acting
---	---------------

Rod end shape

—	Rod end female thread
M	Rod end male thread

Number of auto switches

—	2
S	1
n	n

Auto switch

—	Without auto switch (built-in magnet)
---	---------------------------------------

### Applicable Auto Switches/Refer to p.5.3-2 for further information on auto switch.

Style	Special function	Electrical entry	Indicator	Wiring (output)	Load voltage		Auto switch model		Lead wire (m)*				Applicable load					
					DC	AC	Perp.	In-line	0.5 (→)	3 (L)	5 (Z)	None (N)						
Reed switch	—	Grommet	Yes	3 wire (Equiv. NPN)	—	5V	—	A76H	●	●	—	—	IC	Relay, PLC				
								A72	A72H	●	●	—	—		—			
								A73	A73H	●	●	●	—		—	—		
								2 wire	5V 12V	100V or less	A80	A80H	●		●	—	—	IC
								2 wire	12V	—	A73C	—	●		●	●	●	—
								2 wire	5V 12V	24V or less	A80C	—	●		●	●	●	IC
Solid state switch	—	Grommet	Yes	3 wire (NPN)	—	5V 12V	—	F7NV	F79	●	●	○	—	IC	Relay, PLC			
								F7PV	F7P	●	●	○	—	—				
								F7BV	J79	●	●	○	—	—				
								J79C	—	●	●	●	●	—		—		
								3 wire (PNP)	5V 12V	—	F7NWV	F79W	●	●		○	—	IC
								2 wire	12V	—	F7PW	—	●	●		○	—	—
								2 wire	12V	—	F7BWW	J79W	●	●		○	—	—
								3 wire (NPN)	5V 12V	—	—	F7BA	—	●		○	—	—
								3 wire (PNP)	5V 12V	—	—	F7NT	—	●		○	—	IC
								4 wire (NPN)	—	—	—	F79F	●	●		○	—	—
—	—	—	—	F7LF	●	●	○	—	—									

\*Lead wire length 0.5m..... (Example) A80C 5m.....Z (Example) A80CZ  
3m.....L A80CL —.....N A80CN

\*\*Solid state switches marked with a "○" are manufactured upon receipt of order.

### Mounting Bracket/Part No.

Size	25	32	40	50	63
Foot (1)	MU-L02	MU-L03	MU-L04	MU-L05	MU-L06
Flange	MU-F02	MU-F03	MU-F04	MU-F05	MU-F06
Single clevis	MU-C02	MU-C03	MU-C04	MU-C05	MU-C06
Double clevis (3)	MU-D02	MU-D03	MU-D04	MU-D05	MU-D06

Note 1) When ordering foot brackets, 2pcs. should be ordered for each cylinder.

Note 2) Parts attached with each mounting brackets are as follows.

Foot, Flange, Single clevis/Body mounting bolt  
Double clevis/A clevis pin, C shape snap rings for axis, body mounting bolts

Note 3) A clevis pin and snap rings are packed with the double clevis style.

### Auto Switch Mounting Bracket/Part No.

Size	Model	Note
25, 32, 40, 50, 63	BMU1-025	• Auto switch mounting screw (M3 X 0.5 X 6.5d) • Switch mounting nut

\* Mounting screw set made of stainless steel

Following stainless steel mounting screw set (included nut) is provided. Use them with accordance to environment. (Auto switch interface is available. Order it separately.)

BBA2: For D-A7/A8/F7/J7

When D-F7BAL mounted on cylinder is required, the stainless steel screw mentioned above is used at shipping. When auto switch unit is shipped, BBA2 is attached.

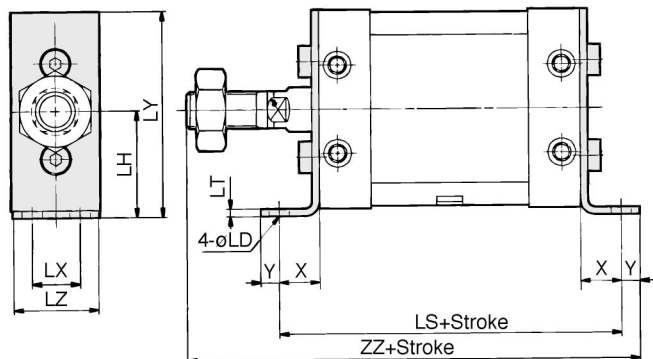
### ⚠ Precautions

Be sure to read before handling. Refer to p.0-39 to 0-46 for Safety Instructions and common precautions.

## Dimensions



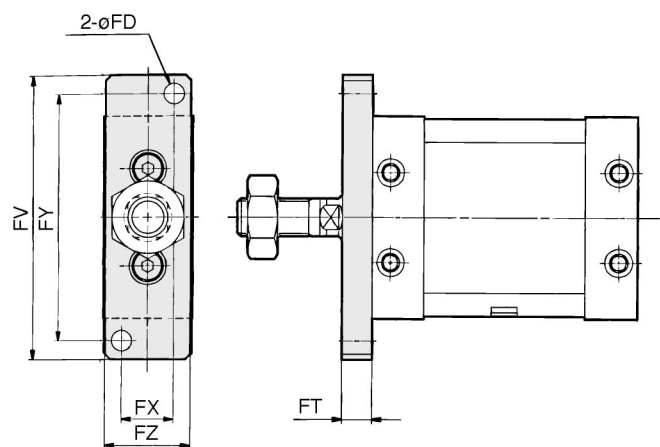
### Axial foot



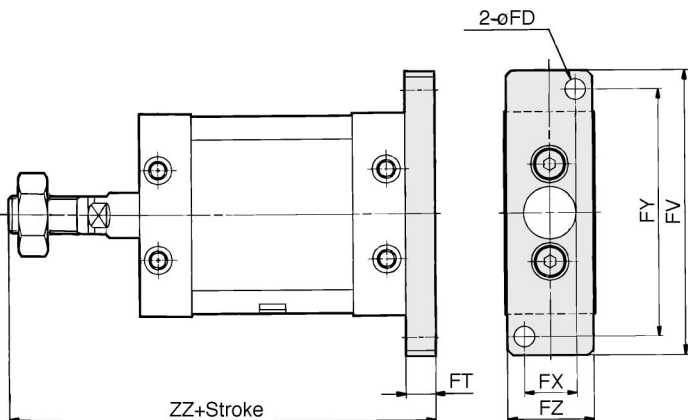
Model	LD	LH	LS	LT	LX	LY	LZ	X	Y	ZZ
<b>MUL25</b>	5.5	29	79	3.2	11	56	23	12	6	109
<b>MUL32</b>	6.6	37	90	4.5	12	71	27	16	8	122
<b>MUL40</b>	9	46	96	4.5	15	89	31	18	10	133
<b>MUL50</b>	11	57	116	5	18	109	37	21	11	159
<b>MUL63</b>	13.5	67	123	6	22	129	48	24	14	169

Axial foot  
 MUL25.....SMU25, #2 (#1+#2+#11)  
 MUL32.....SMU32, #2 (#1+#2+#11)  
 MUL40.....SMU40, #2 (#1+#2+#11)  
 MUL50.....SMU50, #2 (#1+#2+#11)  
 MUL63.....SMU63, #2 (#1+#2+#11)

### Front flange



### Rear flange



**CU**  
**CQS**  
**CQ2**  
**MU**

Model	FD	FT	FV	FX	FY	FZ	ZZ
<b>MUF25, MUG25</b>	5.5	8	76	14	66	24	99
<b>MUF32, MUG32</b>	7	8	94	16	82	28	106
<b>MUF40, MUG40</b>	9	9	118	18	102	32	114
<b>MUF50, MUG50</b>	11	12	144	22	126	39	139
<b>MUF63, MUG63</b>	13	14	168	30	148	50	145



Front flange  
 MUF25.....SMU25, #3 (#1+#3+#11)  
 MUF32.....SMU32, #3 (#1+#3+#11)  
 MUF40.....SMU40, #3 (#1+#3+#11)  
 MUF50.....SMU50, #3 (#1+#3+#11)  
 MUF63.....SMU63, #3 (#1+#3+#11)

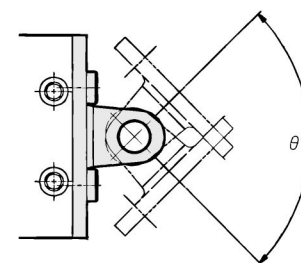
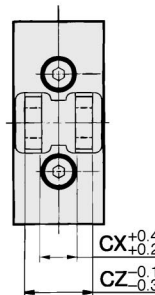
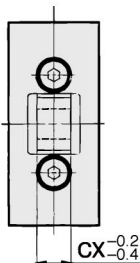
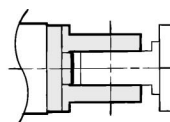
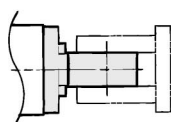
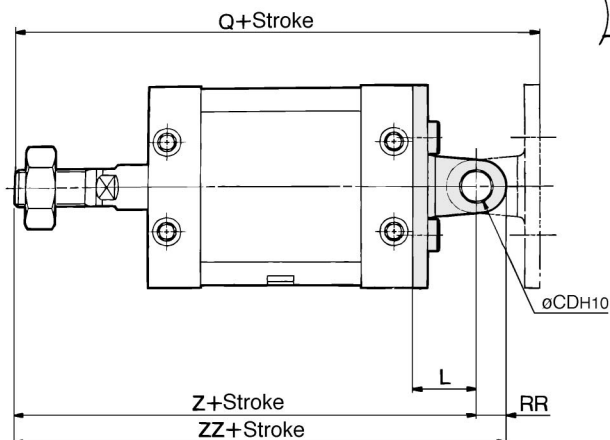
Rear flange  
 MUG25.....SMU25, #4 (#1+#4+#11)  
 MUG32.....SMU32, #4 (#1+#4+#11)  
 MUG40.....SMU40, #4 (#1+#4+#11)  
 MUG50.....SMU50, #4 (#1+#4+#11)  
 MUG63.....SMU63, #4 (#1+#4+#11)

### Single clevis

### Double clevis

### Single clevis

### Double clevis



Double clevis  
 MUD25.....SMU25, #6 (#1+#6+#11)  
 MUD32.....SMU32, #6 (#1+#6+#11)  
 MUD40.....SMU40, #6 (#1+#6+#11)  
 MUD50.....SMU50, #6 (#1+#6+#11)  
 MUD63.....SMU63, #6 (#1+#6+#11)

Model	CDH10	CX	CZ	L	Q	RR	Z	ZZ	Rotation(θ°)
<b>MUC25, MUD25</b>	8 <sup>+0.058</sup> <sub>0</sub>	9	18	17	125	8	108	116	100
<b>MUC32, MUD32</b>	10 <sup>+0.058</sup> <sub>0</sub>	11	22	22	142	10	120	130	90
<b>MUC40, MUD40</b>	10 <sup>+0.058</sup> <sub>0</sub>	13	26	27	159	10	132	142	80
<b>MUC50, MUD50</b>	14 <sup>+0.070</sup> <sub>0</sub>	16	32	32	191	14	159	173	80
<b>MUC63, MUD63</b>	14 <sup>+0.070</sup> <sub>0</sub>	16	32	38	207	16	169	185	80

Single clevis  
 MUC25.....SMU25, #5 (#1+#5+#11)  
 MUC32.....SMU32, #5 (#1+#5+#11)  
 MUC40.....SMU40, #5 (#1+#5+#11)  
 MUC50.....SMU50, #5 (#1+#5+#11)  
 MUC63.....SMU63, #5 (#1+#5+#11)

A clevis pin and snap ring are packed with the double clevis style.

# Plate Cylinder/Double Acting Double Rod

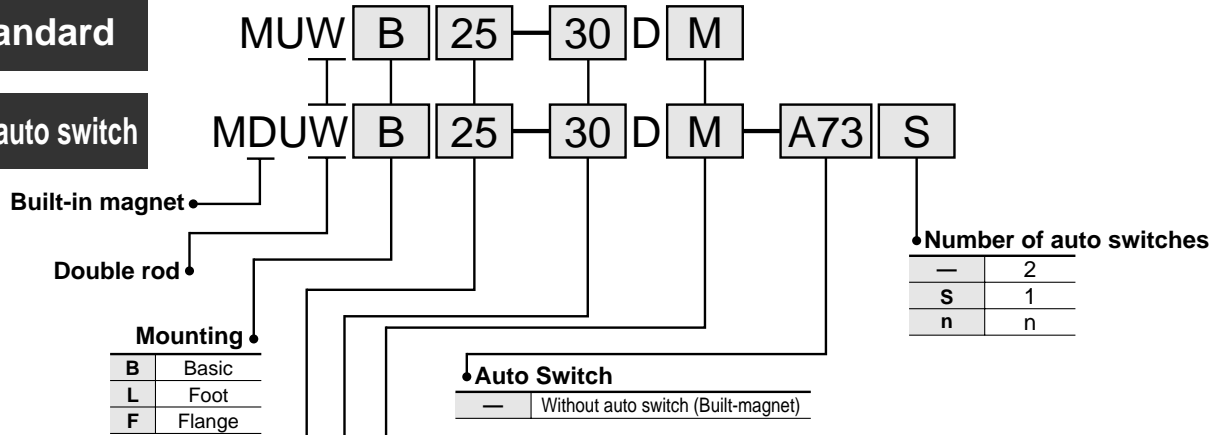
# Series MUW

ø20, ø32, ø40, ø50, ø63

## How to Order

**Standard**

**With auto switch**



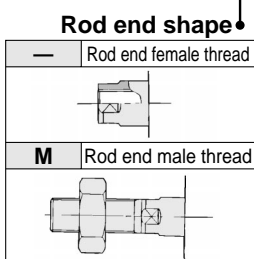
**Mounting**

B	Basic
L	Foot
F	Flange

**Size**

25	Equiv. ø25 piston area
32	Equiv. ø32 piston area
40	Equiv. ø40 piston area
50	Equiv. ø50 piston area
63	Equiv. ø63 piston area

**Stroke(mm)**  
Refer to standard stroke on p.2.4-7.  
Refer to p.2.4-7 when using auto switch.



### Applicable Auto Switches/Refer to p.5.3-2 for further information on auto switch.

Style	Special function	Electrical entry	Indicator	Wiring (output)	Load voltage		Auto switch model		Lead wire (m)*				Applicable load		
					DC	AC	Perp.	In-line	0.5 (-)	3 (L)	5 (Z)	None (N)			
Reed switch	—	Grommet	Yes	3 wire (NPN)	5V	—	—	A76H	●	●	—	—	IC	Relay, PLC	
					—	200V	A72	A72H	●	●	—	—	—		
					12V	100V	A73	A73H	●	●	●	—	—		
					5V 12V	100V or less	A80	A80H	●	●	—	—	IC		
					12V	—	A73C	—	●	●	●	●	—		
					5V 12V	24V or less	A80C	—	●	●	●	●	IC		
Solid state switch	—	Grommet	Yes	3 wire (NPN)	5V 12V	—	—	F7NV	F79	●	●	○	—	IC	Relay, PLC
								F7PV	F7P	●	●	○	—	—	
								F7BV	J79	●	●	○	—	—	
								J79C	—	●	●	○	●	—	
								F7NWW	F79W	●	●	○	—	—	
								—	F7PW	●	●	○	—	—	
								F7BWV	J79W	●	●	○	—	—	
								—	F7BA	—	●	○	—	—	
								—	F7NT	—	●	○	—	—	
								—	F79F	●	●	○	—	—	
—	F7LF	●	●	○	—	—									

\* Lead wire length: 0.5m.....— (Example) A80C 5m.....Z, 3m.....L (Example) A80CZ, A80CL None.....N (Example) A80CN

\* Solid state switches marked with a "○" are manufactured upon receipt of order.

### Mounting Bracket/Part No.

Size	25	32	40	50	63
Bracket	MU-L02	MU-L03	MU-L04	MU-L05	MU-L06
Foot <sup>(1)</sup>	MU-F02	MU-F03	MU-F04	MU-F05	MU-F06
Flange	MU-F02	MU-F03	MU-F04	MU-F05	MU-F06

Note 1) When ordering foot brackets, 2pcs. should be ordered for each cylinder.  
Note 2) Body mounting bolts are packed with the foot style and flange style.

### Auto Switch Mounting Bracket/Part No.

Size	Model	Note
25, 32, 40, 50, 63	BMU1-025	• Auto switch mounting screw (M3 X 0.5 X 6.5d) • Switch mounting nut

\*Mounting screw set made of stainless steel  
Following stainless steel mounting screw set (included nut) is provided. Use them with accordance to environment. (Auto switch interface is available. Order it separately.)  
BBA2:For D-A7/A8/F7/J7  
When D-F7BAL mounted on cylinder is required, the stainless steel screw mentioned above is used when shipping. When auto switch unit is shipped, BBA2 is attached.

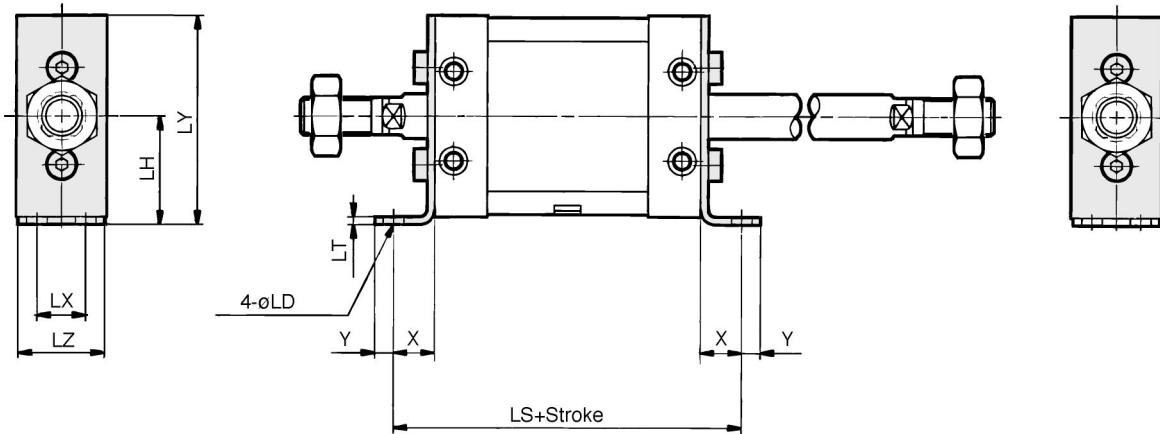
## ⚠ Precautions

Be sure to read before handling. Refer to p.0-39 to 0-46 for Safety Instructions and common precautions.

# Plate Cylinder/Double Acting Double Rod *Series MUW*

## Dimensions

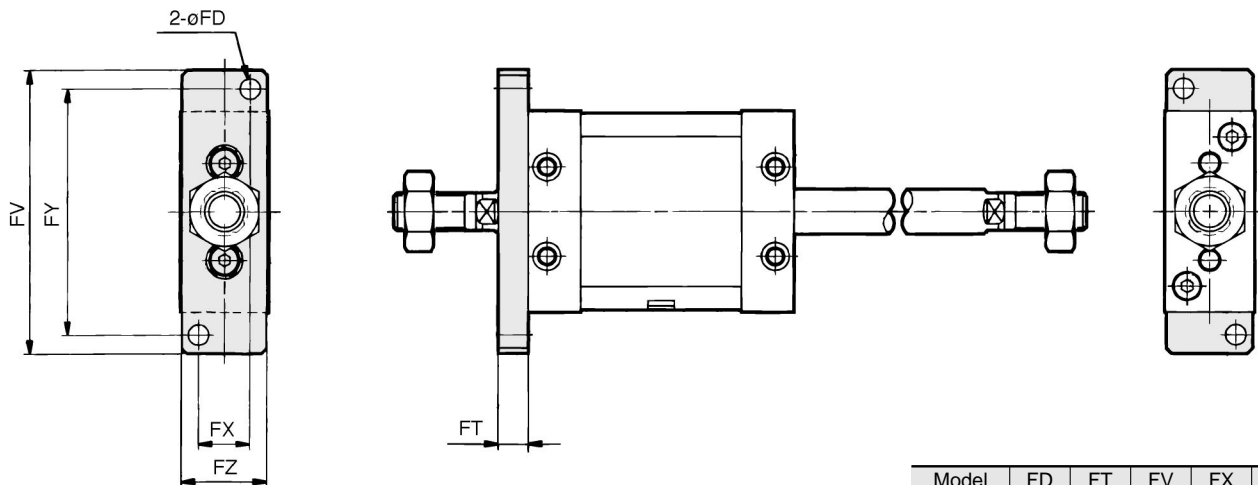
### Foot



Model	LD	LH	LS	LT	LX	LY	LZ	X	Y
<b>MUWL25</b>	5.5	29	79	3.2	11	56	23	12	6
<b>MUWL32</b>	6.6	37	90	4.5	12	71	27	16	8
<b>MUWL40</b>	9	46	96	4.5	15	89	31	18	10
<b>MUWL50</b>	11	57	116	5	18	109	37	21	11
<b>MUWL63</b>	13.5	67	123	6	22	129	48	24	14

(mm)

### Flange



Model	FD	FT	FV	FX	FY	FZ
<b>MUWF25</b>	5.5	8	76	14	66	24
<b>MUWF32</b>	7	8	94	16	82	28
<b>MUWF40</b>	9	9	118	18	102	32
<b>MUWF50</b>	11	12	144	22	126	39
<b>MUWF63</b>	13	14	168	30	148	50

(mm)

**CU**

**CQS**

**CQ2**

**MU**

# Plate Cylinder/Single Acting Spring Return/Extend

# Series MU

ø25, ø32, ø40, ø50, ø63

## How to Order

**Standard**

MU B 25 10 S M

**With auto switch**

MDU B 25 10 S M A73 S

**Built-in magnet**

**Mounting**

B	Basic
L	Axial foot
F	Front flange
G	Rear flange
C	Single clevis
D	Double clevis

**Size**

25	Equiv. ø25 piston area
32	Equiv. ø32 piston area
40	Equiv. ø40 piston area
50	Equiv. ø50 piston area
63	Equiv. ø63 piston area

**Standard Stroke (mm)**

ø25, ø32	5, 10
ø40, ø50, ø63	5, 10, 15, 20

\* Refer to p.2.4-11 when using auto switch.

**Action**

S	Single acting spring return
T	Single acting spring extend

**Rod end shape**

—	Rod end female thread
M	Rod end male thread

**Auto Switch**

— Without auto switch(built-in magnet)

**Number of auto switches**

—	2
S	1
n	n

**Applicable Auto Switches/Refer to p.5.3-2 for further information on auto switch.**

Style	Special function	Electrical entry	Indicator	Wiring (output)	Load voltage		Auto switch model		Lead wire (m)*				Applicable load				
					DC	AC	Perp.	In-line	0.5 (—)	3 (L)	5 (Z)	None (N)					
Reed switch	—	Grommet	Yes	3 wire (Equiv. NPN)	—	5V	—	A76H	●	●	—	—	IC circuit	Relay, PLC			
								A72	A72H	●	●	—	—		—		
								A73	A73H	●	●	●	—		—	—	
								A80	A80H	●	●	—	—		—	—	
								A73C	—	●	●	●	●		—	—	—
								A80C	—	●	●	●	●		—	—	—
Solid state switch	—	Grommet	Yes	3 wire (NPN)	—	5V	12V	F7NV	F79	●	●	○	—	IC circuit	Relay, PLC		
								F7PV	F7P	●	●	○	—	—			
								F7BV	J79	●	●	○	—	—			
								J79C	—	●	●	●	●	—		—	
								F7NWV	F79W	●	●	○	—	—		—	
								—	F7PW	●	●	○	—	—		—	
								F7BWV	J79W	●	●	○	—	—		—	
								—	F7BA	—	●	○	—	—		—	
								—	F7NT	—	●	○	—	—		—	
								—	F79F	●	●	○	—	—		—	
—	F7LF	●	●	○	—	—	—										

\* Lead wire length 0.5m..... (Example) A80C 5m.....Z (Example) A80CZ  
3m.....L A80CL None .....N A80CN

\* Solid state switches marked with a "○" are manufactured upon receipt of order.

### Mounting Bracket/Part No.

Bracket	25	32	40	50	63
Foot (1)	MU-L02	MU-L03	MU-L04	MU-L05	MU-L06
Flange	MU-F02	MU-F03	MU-F04	MU-F05	MU-F06
Single clevis	MU-C02	MU-C03	MU-C04	MU-C05	MU-C06
Double clevis (3)	MU-D02	MU-D03	MU-D04	MU-D05	MU-D06

Note 1) When ordering foot brackets, 2pcs. should be ordered for each cylinder.  
 Note 2) Parts attached with each mounting brackets are as follows.  
 Foot, Flange, Single clevis/Body mounting bolt  
 Double clevis/A clevis pin, C shape snap rings for axis, body mounting bolts  
 Note 3) A clevis pin and snap rings are packed with the double clevis style.

### Auto Switch Mounting Bracket/Part No.

Size	Part No.	Note
25, 32, 40, 50, 63	BMU1-025	• Auto switch mounting screw (M3 X 0.5 X 6.5) • Switch mounting nut

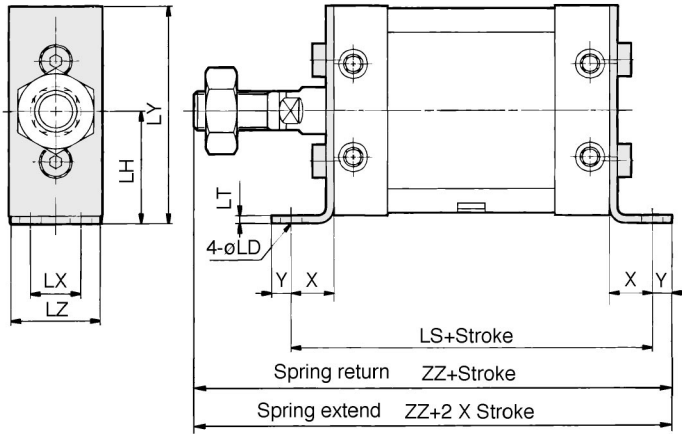
\* Mounting screw set made of stainless steel  
 Following stainless steel mounting screw set (included nut) is provided. Use them with accordance to environment. (Auto switch interface is available. Order it separately.)  
 BBA2: For D-A7/A8/F7/J7  
 When D-F7BAL mounted on cylinder is required, the stainless steel screw mentioned above is used at shipping. When auto switch unit is shipped, BBA2 is attached.

**⚠ Precautions**

**Be sure to read before handling. Refer to p.0-39 to 0-46 for Safety Instructions and common precautions.**

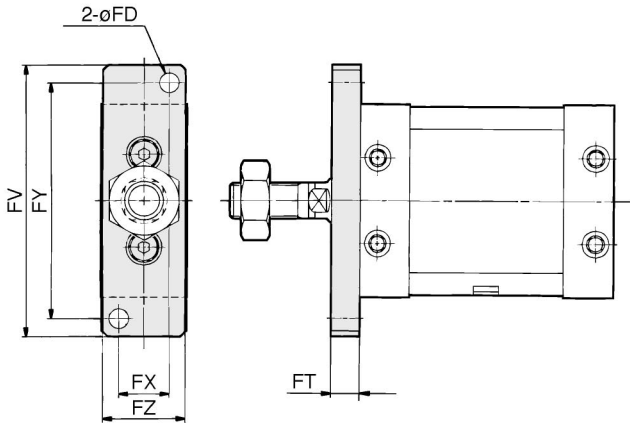
## Dimensions

### Axial foot

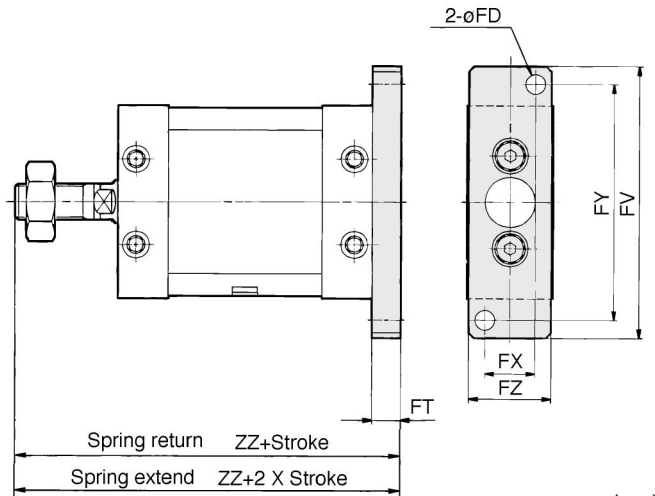


Model	LD	LH	LS	LT	LX	LY	LZ	X	Y	ZZ
<b>MUL25</b>	5.5	29	84	3.2	11	56	23	12	6	114
<b>MUL32</b>	6.6	37	95	4.5	12	71	27	16	8	127
<b>MUL40</b>	9	46	106	4.5	15	89	31	18	10	143
<b>MUL50</b>	11	57	126	5	18	109	37	21	11	169
<b>MUL63</b>	13.5	67	133	6	22	129	48	24	14	179

### Front flange



### Rear flange



Model	FD	FT	FV	FX	FY	FZ	ZZ
<b>MUF25, MUG25</b>	5.5	8	76	14	66	24	104
<b>MUF32, MUG32</b>	7	8	94	16	82	28	111
<b>MUF40, MUG40</b>	9	9	118	18	102	32	124
<b>MUF50, MUG50</b>	11	12	144	22	126	39	149
<b>MUF63, MUG63</b>	13	14	168	30	148	50	155

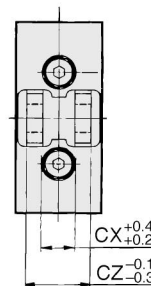
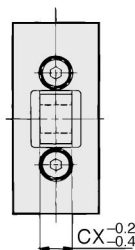
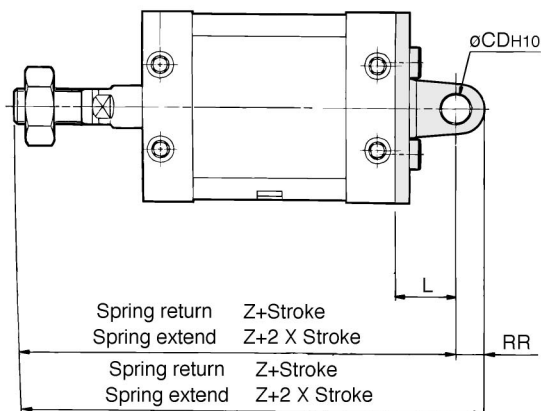
**CU**  
**CQS**  
**CQ2**  
**MU**

### Single clevis

### Double clevis

### Single clevis

### Double clevis



Model	CDH10	CX	CZ	L	RR	Z	ZZ
<b>MUC25, MUD25</b>	8 <sup>+0.058</sup> <sub>0</sub>	9	18	17	8	113	121
<b>MUC32, MUD32</b>	10 <sup>+0.058</sup> <sub>0</sub>	11	22	22	10	125	135
<b>MUC40, MUD40</b>	10 <sup>+0.058</sup> <sub>0</sub>	13	26	27	10	142	152
<b>MUC50, MUD50</b>	14 <sup>+0.070</sup> <sub>0</sub>	16	32	32	14	169	183
<b>MUC63, MUD63</b>	14 <sup>+0.070</sup> <sub>0</sub>	16	32	38	16	179	185

A clevis pin and snap rings are packed with the double clevis style.