

Mechanically Jointed Rodless Cylinder High Precision Guide Type

Series **MY2H/2HT**

ø16, ø25, ø40

How to Order

MY2 H 16 G 300 L M9N

Guide type

| | |
|-----------|---------------------------------------|
| H | High precision guide with single axis |
| HT | High precision guide with double axis |

Bore size

| | |
|-----------|-------|
| 16 | 16 mm |
| 25 | 25 mm |
| 40 | 40 mm |

Thread type

| Symbol | Type | Bore size |
|------------|----------|-----------|
| Nil | M thread | ø16 |
| | Rc | |
| TN | NPT | ø25, ø40 |
| TF | G | |

Piping

| | |
|----------|------------------------------------|
| G | Centralized piping type (Standard) |
|----------|------------------------------------|

Stroke

Refer to "Standard Stroke" table.

Number of auto switches

| | |
|------------|----------|
| Nil | 2 pcs. |
| S | 1 pc. |
| n | "n" pcs. |

Auto switch type

| | |
|------------|---------------------|
| Nil | Without auto switch |
|------------|---------------------|

* For the applicable auto switch model, refer to the table below.

Stroke adjusting unit position

| | |
|------------|-----------|
| Nil | Both ends |
| S | One end |

* "S" is applicable for stroke adjusting units L and H.

Stroke adjusting unit

| | |
|------------|-------------------------------------|
| Nil | Without adjusting unit |
| L | With low load shock absorber |
| H | With high load shock absorber |
| LH | With one L unit and one H unit each |

Shock absorbers for L and H units

| Model | Bore size Unit type (mm) | 16 | 25 | 40 |
|--------------|-----------------------------|-------------|----------------------|--------|
| | | MY2H | L unit RB0806 | RB1007 |
| | H unit | RB1007 | RB1412 | RB2015 |
| MY2HT | L unit | RB1007 | RB1412 | RB2015 |
| | H unit | RB1412 | RB2015 | RB2725 |

Applicable Auto Switch/Refer to page 8-30-1 for further information on auto switches.

| Type | Special function | Electrical entry | Indicator light | Wiring (Output) | Load voltage | | | Auto switch model | | Lead wire length (m)* | | | Applicable load | |
|--------------------|------------------|------------------|-----------------|---------------------|--------------|------|---------------|--|-------------|-----------------------|-------|-------|-----------------|------------|
| | | | | | DC | AC | | Electrical entry direction | | 0.5 (Nil) | 3 (L) | 5 (Z) | | |
| | | | | | | 5 V | 100 V or less | Perpendicular | In-line | | | | | |
| Reed switch | — | Grommet | No | 2-wire | 24 V | 5 V | 100 V | A90V | A90 | ● | ● | — | IC circuit | Relay, PLC |
| | | | Yes | | | 12 V | 100 V | A93V | A93 | ● | ● | — | | |
| | | | Yes | 3-wire (NPN equiv.) | — | 5 V | — | A96V | A96 | ● | ● | — | IC circuit | — |
| Solid state switch | — | Grommet | Yes | 2-wire | 24 V | 12 V | — | M9NV | M9N | ● | ● | — | — | Relay, PLC |
| | | | | | | | | M9PV | M9P | ● | ● | — | | |
| | | | | | | | | M9BV | M9B | ● | ● | — | | |
| | | | | | | | | F9NWV | F9NW | ● | ● | ○ | | |
| | | | | | | | | F9PWV | F9PW | ● | ● | ○ | | |
| | | | | | | | | F9BWV | F9BW | ● | ● | ○ | | |
| | | | | | | | | Diagnostic indication (2-color indication) | | | | | | |

* Lead wire length symbols: 0.5 m..... Nil (Example)F9NW

3 m..... L F9NWL

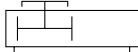
5 m..... Z F9NWZ

* Solid state switches marked "○" are produced upon receipt of order.

Series MY2H/2HT



JIS Symbol



Specifications

| Bore size (mm) | 16 | 25 | 40 |
|-------------------------------|---------------|-----|-----|
| Fluid | Air | | |
| Action | Double acting | | |
| Operating pressure range | 0.1 to 0.8MPa | | |
| Proof pressure | 1.2MPa | | |
| Ambient and fluid temperature | 5 to 60°C | | |
| Cushion | Air cushion | | |
| Lubrication | Non-lube | | |
| Stroke length tolerance | +1.8 0 | | |
| Port size | M5 x 0.8 | 1/8 | 1/4 |

Shock Absorber Specifications

| Model | RB 0806 | RB 1007 | RB 1412 | RB 2015 | RB 2725 | |
|---------------------------------------|------------|---------|---------|---------|---------|-------|
| Max. energy absorption (J) | 2.9 | 5.9 | 19.6 | 58.8 | 147 | |
| Stroke absorption (mm) | 6 | 7 | 12 | 15 | 25 | |
| Max. impact speed (mm/s) | 1500 | 1500 | 1500 | 1500 | 1500 | |
| Max. operating frequency (cycles/min) | 80 | 70 | 45 | 25 | 10 | |
| Spring force (N) | Extended | 1.96 | 4.22 | 6.86 | 8.34 | 8.83 |
| | Compressed | 4.22 | 6.86 | 15.98 | 20.50 | 20.01 |
| Operating temperature range (°C) | 5 to 60 | | | | | |

Stroke Adjusting Unit Specifications

| Bore size (mm) | | 16 | | 25 | | 40 | |
|----------------------------------|-------|--|--------|------------|--------|----------|--------|
| Unit symbol | | L | H | L | H | L | H |
| Shock absorber model | MY2H | RB0806 | RB1007 | RB1007 | RB1412 | RB1412 | RB2015 |
| | MY2HT | RB1007 | RB1412 | RB1412 | RB2015 | RB2015 | RB2725 |
| Stroke fine adjusting range (mm) | | 0 to -5.6 | | 0 to -11.5 | | 0 to -16 | |
| Stroke adjusting range | | When exceeding the stroke fine adjusting range: Use the Made to Order Specifications "-X416" and "-X417". (Refer to page 8-13-33 for details.) | | | | | |

Piston Speed

| Bore size (mm) | | 16 | 25 | 40 |
|-------------------------------|-------------------|------------------------------------|----|----|
| Without stroke adjusting unit | | 100 to 1000mm/s ^{Note 1)} | | |
| Stroke adjusting unit | L unit and H unit | 100 to 1500mm/s | | |

Note 1) When exceeding the air cushion stroke ranges on page 8-13-10, the **piston speed** should be **100 to 200 mm/s**.

Note 2) Use at a piston speed within the absorption capacity range. Refer to page 8-13-10.

Standard Stroke

| Bore size (mm) | Standard stroke (mm) * | Maximum manufacturable stroke (mm) |
|----------------|------------------------------|------------------------------------|
| 16 | 50, 100, 150, 200, 250, 300, | 1000 |
| 25, 40 | 350, 400, 450, 500, 550, 600 | 1500 |



* Strokes are manufacturable in 1 mm increments, up to the maximum stroke. However, add "-XB10" to the end of the part number for non-standard strokes from 51 to 599. Also when exceeding a 600 mm stroke, specify "-XB11" at the end of the model number. Refer to the Made to Order Specifications on page 8-13-31.



Made to Order Specifications

Refer to pages 8-13-31 to 8-13-33 for details.

Mechanically Jointed Rodless Cylinder Series MY2H/2HT

High Precision Guide Type

Theoretical Output

Unit: N

| Bore size (mm) | Piston area (mm ²) | Operating pressure (MPa) | | | | | | |
|----------------|--------------------------------|--------------------------|-----|-----|-----|-----|-----|------|
| | | 0.2 | 0.3 | 0.4 | 0.5 | 0.6 | 0.7 | 0.8 |
| 16 | 200 | 40 | 60 | 80 | 100 | 120 | 140 | 160 |
| 25 | 490 | 98 | 147 | 196 | 245 | 294 | 343 | 392 |
| 40 | 1256 | 251 | 377 | 502 | 628 | 754 | 879 | 1005 |

Note) Theoretical output (N) = Pressure (MPa) x Piston area (mm²)

Weight

Unit: kg

| Model | Bore size (mm) | Basic weight | Additional weight per 50 mm of stroke | Stroke adjusting unit weight (per unit) | |
|-------|----------------|--------------|---------------------------------------|---|--------|
| | | | | L unit | H unit |
| MY2H | 16 | 0.86 | 0.22 | 0.03 | 0.04 |
| | 25 | 2.35 | 0.42 | 0.06 | 0.09 |
| | 40 | 6.79 | 0.76 | 0.16 | 0.22 |
| MY2HT | 16 | 1.27 | 0.31 | 0.04 | 0.08 |
| | 25 | 3.70 | 0.61 | 0.10 | 0.18 |
| | 40 | 10.05 | 1.13 | 0.27 | 0.46 |

Calculation method

Example: MY2H25G-300L

Basic weight 2.35 kg

Additional weight 0.42/50 mm

Weight of L unit 0.06 kg

Cylinder stroke 300 mm

2.35 + 0.42 x 300 ÷ 50 + 0.06 x 2 = Approx. 4.99 kg

Option

Stroke Adjusting Unit No.

| Model | Bore size (mm) | 16 | 25 | 40 |
|-------|----------------|------------|------------|------------|
| | Unit type | | | |
| MY2H | L unit | MY2H-A16L | MY2H-A25L | MY2H-A40L |
| | H unit | MY2H-A16H | MY2H-A25H | MY2H-A40H |
| MY2HT | L unit | MY2HT-A16L | MY2HT-A25L | MY2HT-A40L |
| | H unit | MY2HT-A16H | MY2HT-A25H | MY2HT-A40H |

Replacement Parts

Drive Unit (Cylinder) Replacement Part No.

| Bore size (mm) | Model | MY2H | MY2HT |
|----------------|-------|--|-------|
| 16 | | MY2BH16G- <input type="text" value="Stroke"/> | |
| 25 | | MY2BH25□G- <input type="text" value="Stroke"/> | |
| 40 | | MY2BH40□G- <input type="text" value="Stroke"/> | |

Enter a symbol for port thread type inside .

MX

MTS

MY

CY

MG

CX

D-

-X

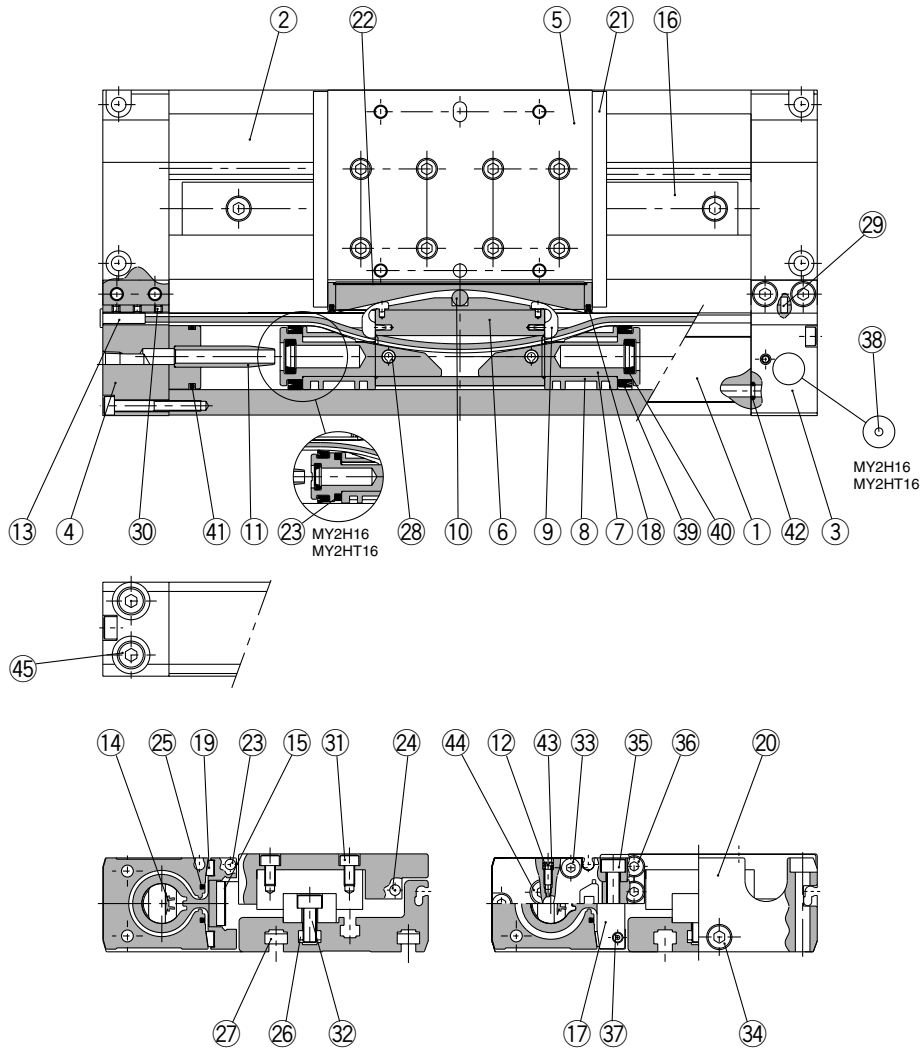
20-

Data

Series MY2H/2HT

Construction

Single axis type: MY2H



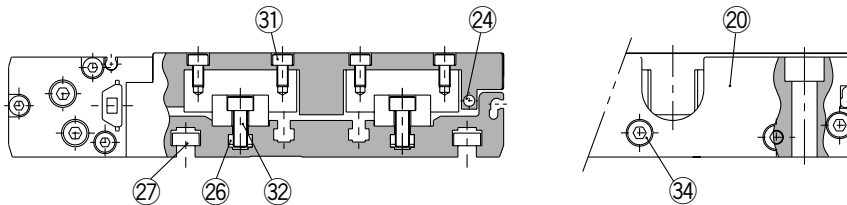
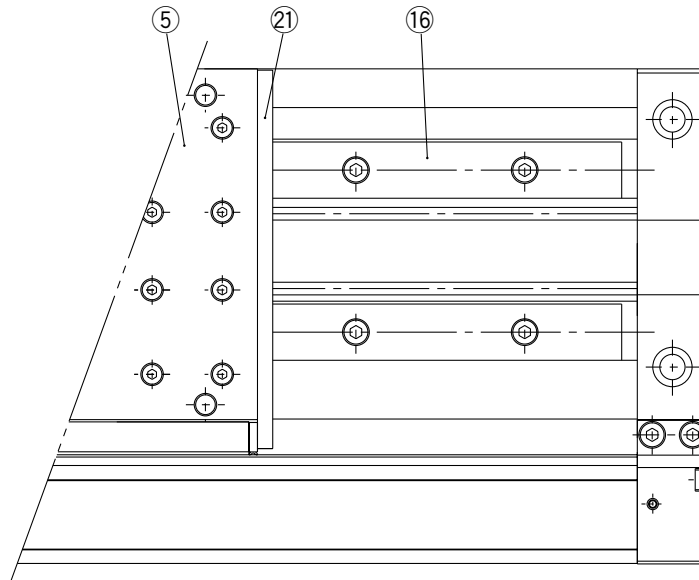
Component Parts

| No. | Description | Material | Note |
|-----|----------------|-----------------|-------------------------------|
| ① | Cylinder tube | Aluminum alloy | Hard anodized |
| ② | Body | Aluminum alloy | Hard anodized |
| ③ | Head cover WR | Aluminum alloy | Hard anodized |
| ④ | Head cover WL | Aluminum alloy | Hard anodized |
| ⑤ | Slide table | Aluminum alloy | Hard anodized |
| ⑥ | Piston yoke | Aluminum alloy | Hard anodized |
| ⑦ | Piston | Aluminum alloy | Chromated |
| ⑧ | Wear ring | Special resin | |
| ⑨ | Belt separator | Special resin | |
| ⑩ | Parallel pin | Stainless steel | |
| ⑪ | Cushion ring | Brass | |
| ⑫ | Cushion needle | Rolled steel | Nickel plated |
| ⑬ | Belt clamp | Special resin | |
| ⑯ | Guide | — | |
| ⑰ | End cover | Aluminum alloy | Hard anodized |
| ⑲ | Bearing | Special resin | |
| ⑳ | End plate | Aluminum alloy | Hard anodized |
| ㉑ | Stopper | Carbon steel | Nickel plated after quenching |
| ㉒ | Top cover | Stainless steel | |

| No. | Description | Material | Note |
|-----|---------------------------------|-------------------------|---|
| ㉓ | Magnet | Rare earth magnet | |
| ㉔ | Magnet | Rare earth magnet | |
| ㉕ | Seal magnet | Rubber magnet | |
| ㉖ | Square nut | Carbon steel | Nickel plated |
| ㉗ | Square nut | Carbon steel | Nickel plated |
| ㉘ | Spring pin | Carbon tool steel | Black zinc chromated |
| ㉙ | Parallel pin | Stainless steel | |
| ㉚ | Hexagon socket head set screw | Chrome molybdenum steel | Black zinc chromated |
| ㉛ | Hexagon socket head button bolt | Chrome molybdenum steel | Nickel plated |
| ㉜ | Hexagon socket head button bolt | Chrome molybdenum steel | Nickel plated |
| ㉝ | Hexagon socket head button bolt | Chrome molybdenum steel | Nickel plated |
| ㉞ | Hexagon socket head button bolt | Chrome molybdenum steel | Nickel plated |
| ㉟ | Hexagon socket head button bolt | Chrome molybdenum steel | Nickel plated |
| ㊱ | Hexagon socket head button bolt | Chrome molybdenum steel | Nickel plated |
| ㊲ | Hexagon socket head button bolt | Chrome molybdenum steel | Nickel plated |
| ㊳ | Steel ball | Spring steel | Nickel plated |
| ㊴ | Hexagon socket head taper plug | Carbon steel | Nickel plated (ø16: Hexagon socket head plug) |
| ㊵ | Hexagon socket head taper plug | Carbon steel | Nickel plated (ø16: Hexagon socket head plug) |

Mechanically Jointed Rodless Cylinder High Precision Guide Type Series MY2H/2HT

Double axis type: MY2HT



MX

MTS

MY

CY

MG

CX

D-

-X

20-

Data

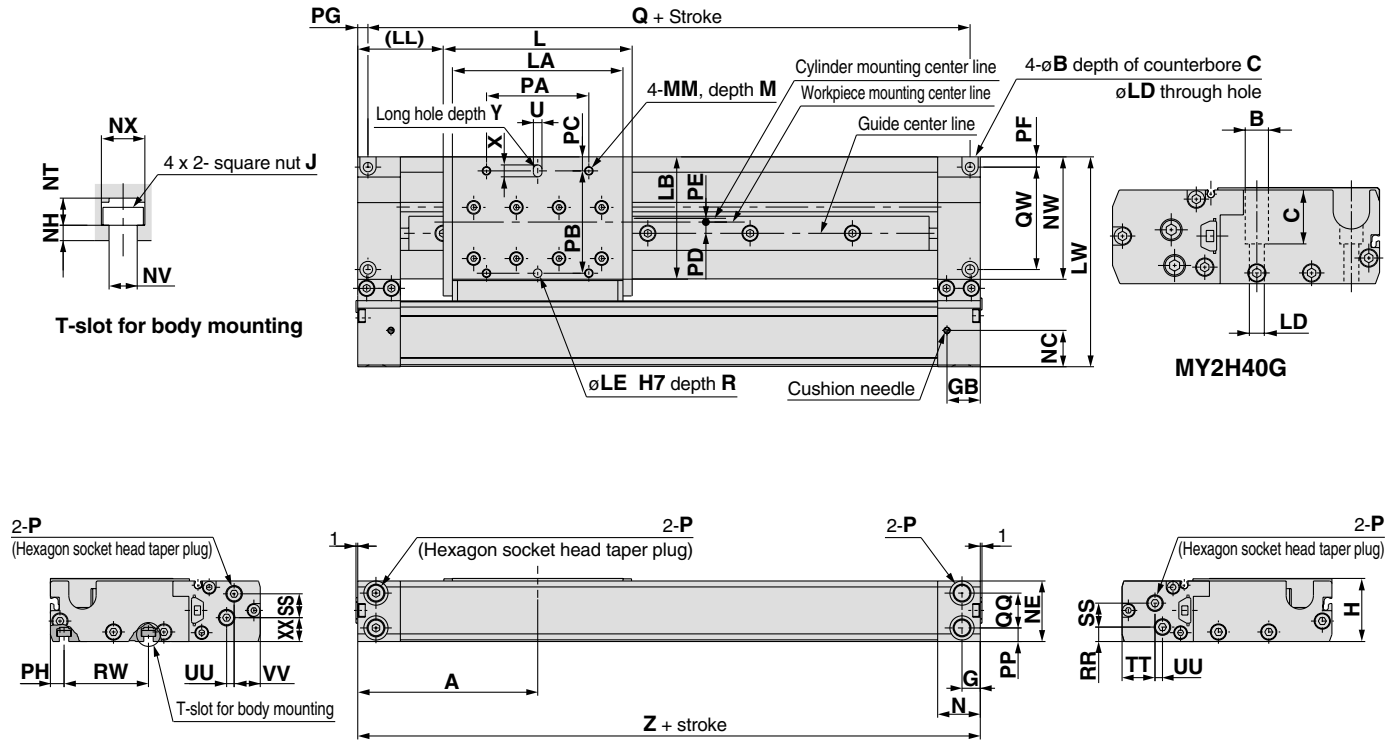
Replacement Parts: Seal Kit

| No. | Description | Material | Qty. | MY2H16G/MY2HT16G | MY2H25G/MY2HT25G | MY2H40G/MY2HT40G |
|-----|----------------|-----------------|------|------------------------------------|------------------------------------|------------------------------------|
| 14 | Seal belt | Special resin | 1 | MY16-16A- Stroke | MY2H25-16A- Stroke | MY2H40-16A- Stroke |
| 15 | Dust seal band | Stainless steel | 1 | MY2H16-16B- Stroke | MY2H25-16B- Stroke | MY2H40-16B- Stroke |
| 18 | Scraper | Special resin | 2 | MYH16-15AR4900 | MYH25-15AR4901 | MYH40-15AR4902 |
| 39 | Piston seal | NBR | 2 | GMY16 | GMY25 | GMY40 |
| 40 | Cushion seal | NBR | 2 | MYB16-15-A7163 | RCS-8 | RCS-12 |
| 41 | Tube gasket | NBR | 2 | P12 | TMY-25 | TMY-40 |
| 42 | O-ring | NBR | 4 | ø6.2 x ø3 x ø1.6 | P-5 | C-9 |
| 43 | O-ring | NBR | 2 | ø4 x ø1.8 x ø1.1 | ø4 x ø1.8 x ø1.1 | ø7.15 x ø3.75 x ø1.7 |

Series MY2H/2HT

Single Axis Type: $\phi 16$, $\phi 25$, $\phi 40$

MY2H Bore size G — Stroke



(mm)

| Model | A | B | C | G | GB | H | L | J | LA | LB | LD | LE | (LL) | LW | M | MM | N | NC | NE | NH | NT | NV | NW | NX | P |
|---------|-----|-----|------|------|------|----|-------|----------|-----|------|-----|----|------|-----|----|----------|----|------|------|----|-----|-----|------|------|----------|
| MY2H16G | 80 | 6.5 | 3.3 | 8.5 | 17 | 28 | 80 | M3 x 0.5 | 70 | 50.4 | 3.4 | 4 | 40 | 83 | 7 | M4 x 0.7 | 20 | 14 | 27 | 2 | 3.5 | 3.4 | 48.2 | 5.8 | M5 x 0.8 |
| MY2H25G | 105 | 9.5 | 5.4 | 10.7 | 19.5 | 37 | 110.8 | M5 x 0.8 | 100 | 71.7 | 5.5 | 5 | 49.6 | 123 | 9 | M5 x 0.8 | 25 | 21.3 | 35.5 | 3 | 5.3 | 5.5 | 71.8 | 8.5 | 1/8 |
| MY2H40G | 165 | 14 | 32.5 | 15.5 | 31.5 | 58 | 180 | M6 x 1 | 158 | 80.3 | 9 | 6 | 75 | 161 | 13 | M6 x 1 | 40 | 32.4 | 56.5 | 4 | 6.5 | 6.6 | 82.1 | 10.5 | 1/4 |

| Model | PA | PB | PC | PD | PE | PF | PG | PH | PP | Q | QQ | QW | R | RR | RW | SS | TT | U | UU | VV | X | XX | Y | Z |
|---------|-----|----|-----|-----|-----|-----|----|-----|-----|-----|------|----|---|-----|------|------|------|---|-----|------|-----|----|---|-----|
| MY2H16G | 40 | 40 | 7.2 | 2.8 | 3.7 | 3.5 | 4 | 5.1 | 5.3 | 152 | 16.4 | 40 | 5 | 5.3 | 40 | 9.7 | 12.5 | 4 | 3 | 10.5 | 6 | 12 | 5 | 160 |
| MY2H25G | 60 | 60 | 8.2 | 6.6 | 2.7 | 5.5 | 6 | 7.5 | 8 | 198 | 20.4 | 60 | 5 | 8.5 | 50 | 14 | 19.3 | 5 | 4.4 | 15.3 | 7.5 | 14 | 5 | 210 |
| MY2H40G | 100 | 70 | 5.5 | 8.5 | 5 | 17 | 9 | 9.5 | 16 | 312 | 25.5 | 57 | 8 | 11 | 53.5 | 21.5 | 35.4 | 6 | 2 | 29 | 9 | 23 | 8 | 330 |

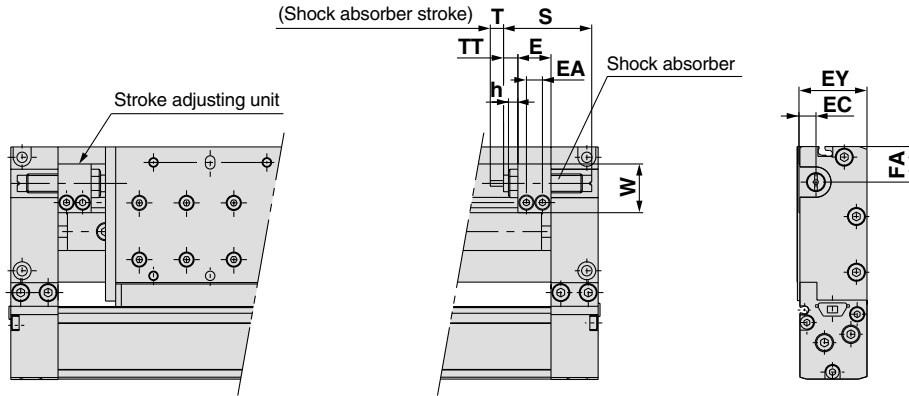
"P" indicates cylinder supply ports. * The plug for "P" MY2H16G is a hexagon socket head plug.

Mechanically Jointed Rodless Cylinder High Precision Guide Type Series MY2H/2HT

Stroke adjusting unit

Low load shock absorber

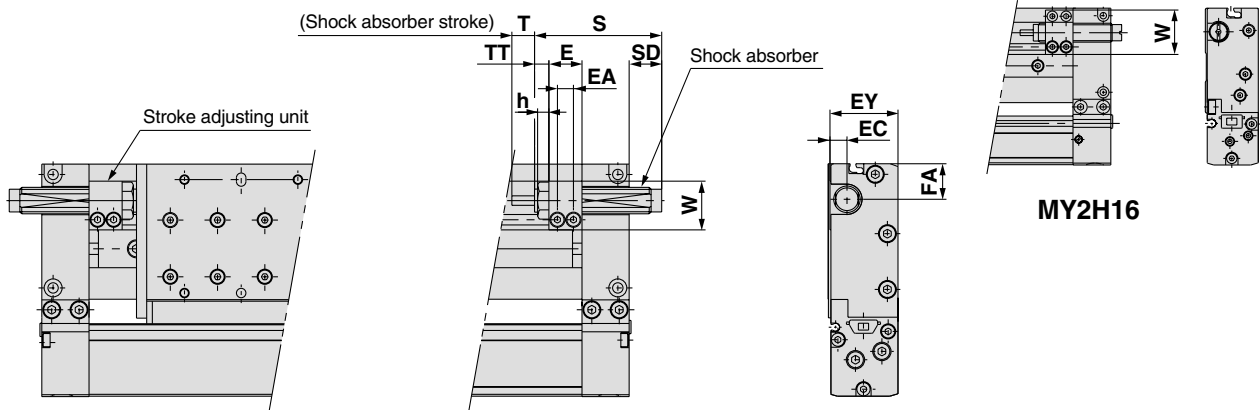
MY2H Bore size G — Stroke L



| Applicable cylinder | E | EA | EC | EY | FA | h | S | T | TT | W | Shock absorber model |
|---------------------|------|-----|----|----|------|---|------|----|-----------------|------|----------------------|
| MY2H16 | 14.4 | 7 | 6 | 27 | 12.5 | 4 | 40.8 | 6 | 5.6 (MAX. 11.2) | 16.5 | RB0806 |
| MY2H25 | 17.5 | 8.5 | 9 | 36 | 19.3 | 5 | 46.7 | 7 | 7.1 (MAX. 18.6) | 25.8 | RB1007 |
| MY2H40 | 25 | 13 | 13 | 57 | 17 | 6 | 67.3 | 12 | 10 (MAX. 26) | 38 | RB1412 |

High load shock absorber

MY2H Bore size G — Stroke H



| Applicable cylinder | E | EA | EC | EY | FA | h | S | SD | T | TT | W | Shock absorber model |
|---------------------|------|-----|----|----|------|---|------|------|----|-----------------|------|----------------------|
| MY2H16 | 14.4 | 7 | 6 | 27 | 12.5 | — | 46.7 | 6.7 | 7 | 5.6 (MAX. 12) | 23.5 | RB1007 |
| MY2H25 | 17.5 | 8.5 | 9 | 36 | 19.3 | 6 | 67.3 | 17.7 | 12 | 7.1 (MAX. 18.6) | 25.8 | RB1412 |
| MY2H40 | 25 | 13 | 13 | 57 | 17 | 6 | 73.2 | — | 15 | 10 (MAX. 6) | 38 | RB2015 |

MX

MTS

MY

CY

MG

CX

D-

-X

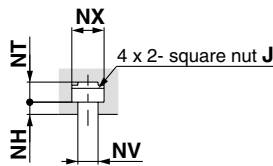
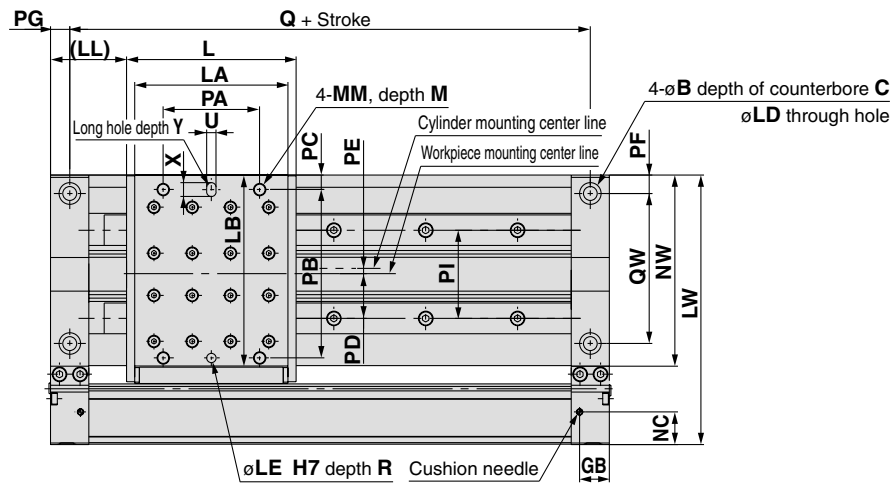
20-

Data

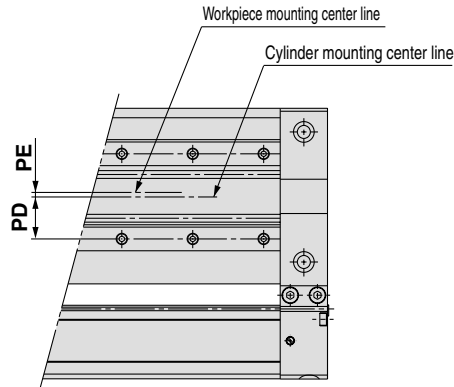
Series MY2H/2HT

Double Axis Type: $\phi 16$, $\phi 25$, $\phi 40$

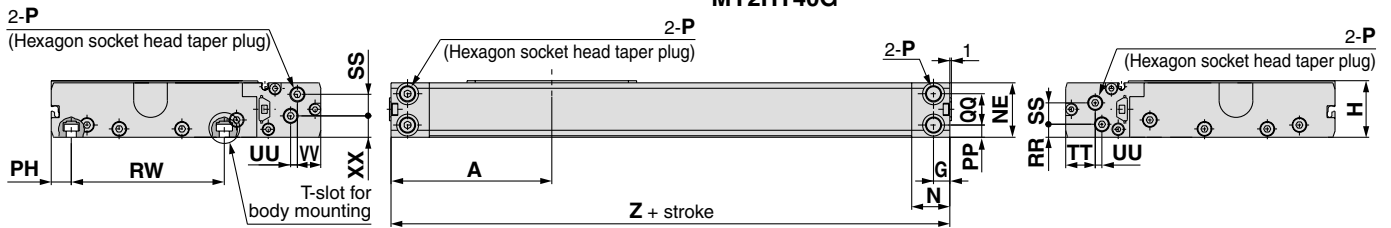
MY2HT Bore size G — Stroke



T-slot for body mounting



MY2HT40G



| Model | A | B | C | G | GB | H | L | J | LA | LB | LD | LE | (LL) | LW | M | MM | N | NC | NE | NH | NT |
|----------|-----|------|------|------|------|----|-------|-----------|-----|-------|-----|----|------|-----|----|-----------|----|------|------|----|-----|
| MY2HT16G | 80 | 9.5 | 5.4 | 8.5 | 17 | 28 | 80 | M4 x 0.7 | 70 | 87.4 | 5.5 | 5 | 40 | 120 | 9 | M5 x 0.8 | 20 | 14 | 27 | 3 | 4.7 |
| MY2HT25G | 105 | 14 | 8.6 | 10.7 | 19.5 | 37 | 110.8 | M6 x 1 | 100 | 124.7 | 9 | 6 | 49.6 | 176 | 12 | M8 x 1.25 | 25 | 21.3 | 35.5 | 4 | 6.5 |
| MY2HT40G | 165 | 17.5 | 10.8 | 15.5 | 31.5 | 58 | 180 | M8 x 1.25 | 158 | 148.3 | 11 | 8 | 75 | 229 | 16 | M10 x 1.5 | 40 | 32.4 | 56.5 | 5 | 9 |

| Model | NV | NW | NX | P | PA | PB | PC | PD | PE | PF | PG | PH | PI | PP | Q | QQ | QW | R | RR | RW | SS | TT |
|----------|-----|-------|------|----------|-----|-----|-----|------|-----|----|------|------|------|-----|-----|------|-----|----|-----|-----|------|------|
| MY2HT16G | 4.5 | 85.2 | 7.3 | M5 x 0.8 | 44 | 80 | 4 | 23 | 1 | 10 | 10 | 10.2 | 41 | 5.3 | 140 | 16.4 | 66 | 5 | 5.3 | 69 | 9.7 | 12.5 |
| MY2HT25G | 6.6 | 124.8 | 10.5 | 1/8 | 63 | 110 | 9.4 | 29.2 | 3.4 | 12 | 12.5 | 13 | 57.6 | 8 | 185 | 20.4 | 98 | 8 | 8.5 | 100 | 14 | 19.3 |
| MY2HT40G | 9 | 150.1 | 14 | 1/4 | 113 | 132 | 8.5 | 36 | 0.5 | 20 | 20 | 18.5 | 72 | 16 | 290 | 25.5 | 110 | 12 | 11 | 116 | 21.5 | 35.4 |

| Model | U | UU | VV | X | XX | Y | Z |
|----------|---|-----|------|----|----|----|-----|
| MY2HT16G | 5 | 3 | 10.5 | 7 | 12 | 5 | 160 |
| MY2HT25G | 6 | 4.4 | 15.3 | 9 | 14 | 8 | 210 |
| MY2HT40G | 8 | 2 | 29 | 12 | 23 | 12 | 330 |

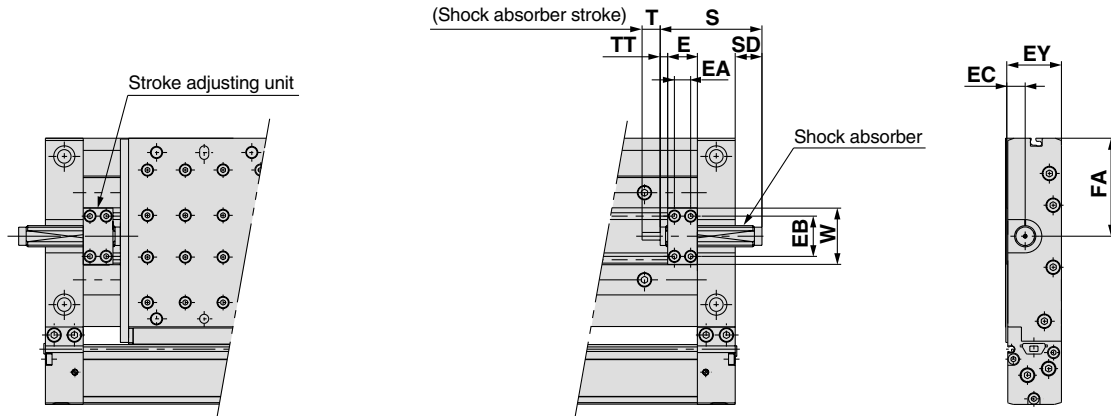
"P" indicates cylinder supply ports. * The plug for "P" MY2HT16G is a hexagon socket head plug.

Mechanically Jointed Rodless Cylinder High Precision Guide Type Series MY2H/2HT

Stroke adjusting unit

Low load shock absorber

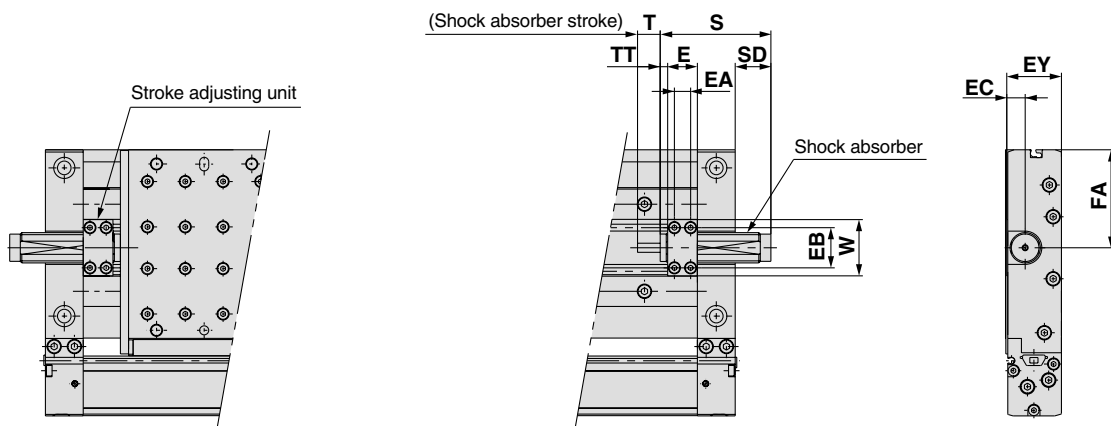
MY2HT Bore size G — Stroke L



| Applicable cylinder | E | EA | EB | EC | EY | FA | S | SD | T | TT | W | Shock absorber model |
|---------------------|------|------|------|------|------|------|------|------|----|-----------------|------|----------------------|
| MY2HT16 | 14.4 | 7 | 21 | 8 | 27 | 46.5 | 46.7 | 6.7 | 7 | 5.6 (MAX. 11.2) | 28.6 | RB1007 |
| MY2HT25 | 19.7 | 10.7 | 26.6 | 16.2 | 36.2 | 64.8 | 67.3 | 17.7 | 12 | 4.9 (MAX. 16.4) | 37.2 | RB1412 |
| MY2HT40 | 29.1 | 15.1 | 37 | 17.2 | 57 | 74.5 | 73.2 | — | 15 | 5.9 (MAX. 21.9) | 51.6 | RB2015 |

High load shock absorber

MY2HT Bore size G — Stroke H



| Applicable cylinder | E | EA | EB | EC | EY | FA | S | SD | T | TT | W | Shock absorber model |
|---------------------|------|------|------|------|------|------|------|------|----|-----------------|------|----------------------|
| MY2HT16 | 14.4 | 7 | 21 | 8 | 27 | 46.5 | 67.3 | 27.3 | 12 | 5.6 (MAX. 11.2) | 28.6 | RB1412 |
| MY2HT25 | 19.7 | 10.7 | 26.6 | 11.2 | 36.2 | 64.8 | 73.2 | 23.6 | 15 | 4.9 (MAX. 16.4) | 37.2 | RB2015 |
| MY2HT40 | 29.1 | 15.1 | 37 | 17.2 | 57 | 74.5 | 99 | 24 | 25 | 5.9 (MAX. 21.9) | 51.6 | RB2725 |

MX

MTS

MY

CY

MG

CX

D-

-X

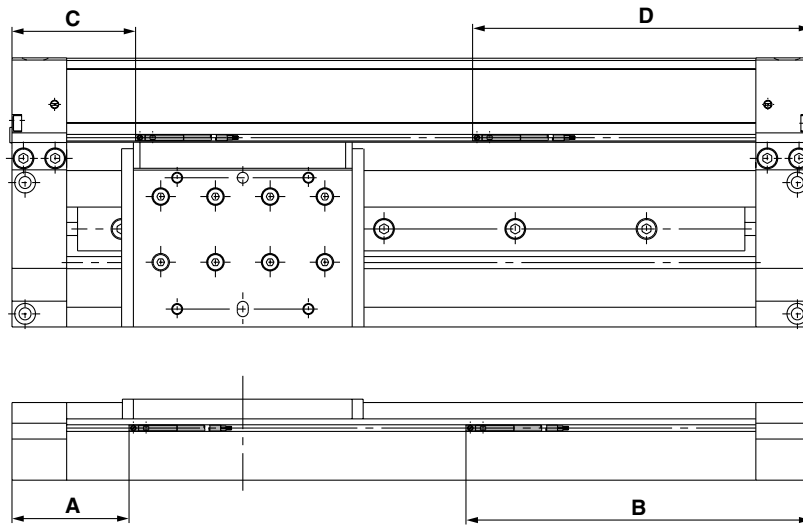
20-

Data

Series MY2

Proper Auto Switch Mounting Position (Detection at stroke end)

Note) The operating range is a standard including hysteresis, and is not guaranteed. There may be large variations depending on the surrounding environment (variations on the order of $\pm 30\%$).



Series MY2C

| D-M9, D-M9□V (mm) | | | |
|-------------------|----|-----|-----------------|
| Bore size | A | B | Operating range |
| 16 | 58 | 102 | 3.0 |
| 25 | 58 | 152 | 8.0 |
| 40 | 89 | 241 | 6.5 |

| (mm) | | | |
|-----------|------|-------|-----------------|
| Bore size | C | D | Operating range |
| 16 | 31 | 129 | 3.4 |
| 25 | 61 | 149 | 3.5 |
| 40 | 94.2 | 235.8 | 5.0 |

Series MY2H

| D-M9, D-M9□V (mm) | | | |
|-------------------|----|-----|-----------------|
| Bore size | A | B | Operating range |
| 16 | 58 | 102 | 3.5 |
| 25 | 58 | 152 | 9.0 |
| 40 | 89 | 241 | 7.0 |

| (mm) | | | |
|-----------|------|-------|-----------------|
| Bore size | C | D | Operating range |
| 16 | 31 | 129 | 3.5 |
| 25 | 61 | 149 | 4.0 |
| 40 | 94.2 | 235.8 | |

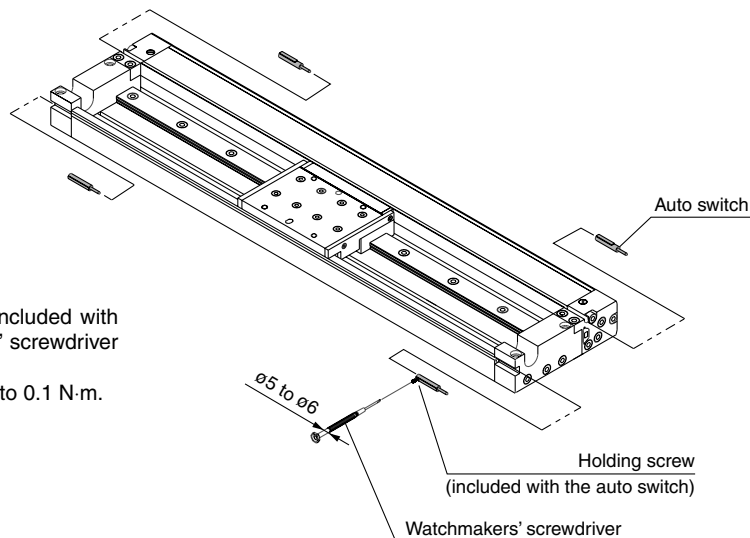
Series MY2HT

| D-M9, D-M9□V (mm) | | | |
|-------------------|----|-----|-----------------|
| Bore size | A | B | Operating range |
| 16 | 58 | 102 | 3.5 |
| 25 | 58 | 152 | 11.0 |
| 40 | 89 | 241 | 7.5 |

| (mm) | | | |
|-----------|------|-------|-----------------|
| Bore size | C | D | Operating range |
| 16 | 31 | 129 | 4.0 |
| 25 | 61 | 149 | 3.5 |
| 40 | 94.2 | 235.8 | 3.0 |

Mounting of Auto Switch

When mounting an auto switch, insert it into the cylinder's switch groove from the direction shown in the drawing to the right. After placing it in the mounting position, use a flat head watchmakers' screwdriver to tighten the mounting screw which is included.



Note) When tightening the holding screw (included with the auto switch), use a watchmakers' screwdriver with a handle 5 to 6 mm in diameter. The tightening torque should be 0.05 to 0.1 N·m.

Series MY2

Made to Order Specifications:

Please contact with SMC for further information on specifications, dimensions and delivery.

Made to Order Combinations

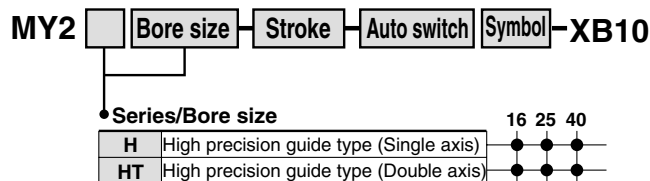
| | | Intermediate stroke XB10 | Long stroke XB11 | Helical insert threads X168 | Holder mounting bracket X416/X417 | Copper-free 20- |
|-------|---|-----------------------------|---------------------|-----------------------------------|---|--------------------|
| MY2C | Cam follower guide type | Standardized | ● | ● | ● | ● |
| MY2H | High precision guide type (Single axis) | ● | ● | ● | ● | ● |
| MY2HT | High precision guide type (Double axis) | ● | ● | ● | ● | ● |

- MX
- MTS
- MY
- CY
- MG
- CX
- D-
- X
- 20-
- Data

1 Intermediate Stroke Symbol **-XB10**

Intermediate strokes are available within the standard stroke range. The stroke can be set in 1 mm increments.

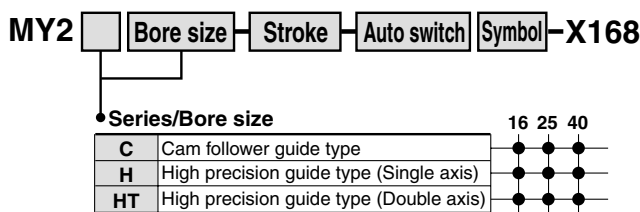
■ Stroke range: 51 to 599 mm



(Example) MY2H40G-599L-A93-XB10

3 Helical Insert Thread Specifications Symbol **-X168**

The mounting threads of the slider are changed to helical insert threads. The thread size is the same as standard.

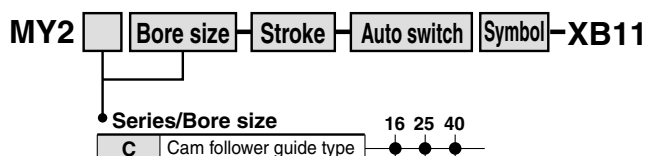


(Example) MY2H40G-300L-A93-X168

2 Long Stroke Symbol **-XB11**

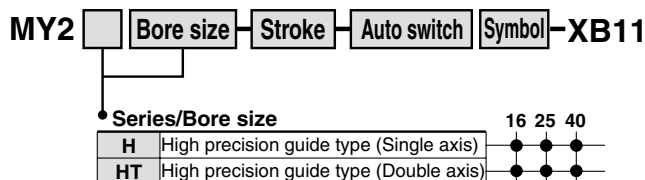
Available with long strokes exceeding the standard strokes. The stroke can be set in 1 mm increments.

■ Stroke range: 2001 to 5000 mm (2001 to 3000 mm for ø16)



(Example) MY2C40G-4999L-A93-XB11

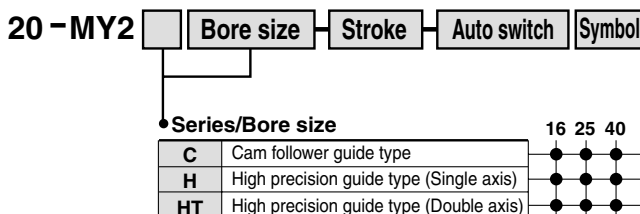
■ Stroke range: 601 to 1500 mm (601 to 1000 mm for ø16)



(Example) MY2H40G-999L-A93-XB11

4 Copper-free Symbol **20-**

For copper-free applications



Series MY2

5 Holder Mounting Bracket ①, ② -X416/X417

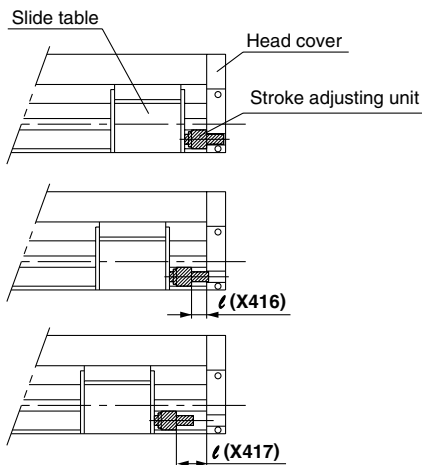
Holder mounting brackets are used to fasten the stroke adjusting unit at an intermediate stroke position.

Holder mounting bracket ① -X416 Holder mounting bracket ② -X417

Fine stroke adjustment range

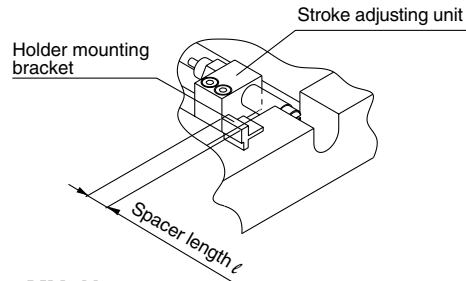
(Treated as a special order when exceeding the adjustment ranges shown below.) Unit: mm

| Bore size (mm) | -X416 (one side) | | -X417 (one side) | |
|----------------|----------------------|------------------|----------------------|------------------|
| | Spacer length ℓ | Adjustment range | Spacer length ℓ | Adjustment range |
| 16 | 5.6 | -5.6 to -11.2 | 11.2 | -11.2 to -16.8 |
| 25 | 11.5 | -11.5 to -23 | 23 | -23 to -34.5 |
| 40 | 16 | -16 to -32 | 32 | -32 to -48 |

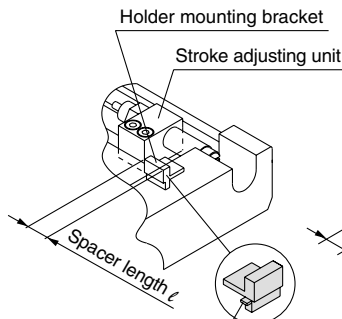


Holder Mounting Bracket Illustration

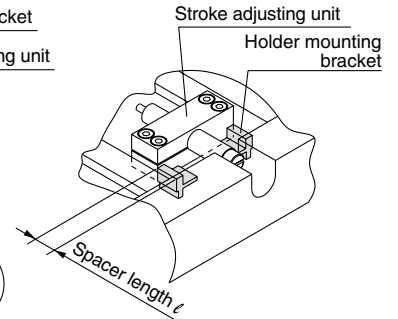
MY2C



MY2H



MY2HT



MY2 Bore size - 300 L - X416

Combination symbol

Refer to the table below for applicable symbols.

Holder mounting bracket

Refer to the table below for applicable symbols.

Stroke adjusting unit

Refer to the table below for applicable symbols.

Stroke

(Note) Indicates the stroke prior to mounting the stroke adjusting unit.

Series/Bore size

| | | | | |
|-----------|---|---|---|---|
| C | Cam follower guide type | ● | ● | ● |
| H | High precision guide type (Single axis) | ● | ● | ● |
| HT | High precision guide type (Double axis) | ● | ● | ● |

| Stroke adjusting unit | Holder mounting bracket | Suffix | Mounting pcs. | | Combination description | |
|-----------------------|-------------------------|--------|---------------|---|---------------------------------------|---------------------------------------|
| | | | X416 | X417 | | |
| L, H, LS, HS | X416 | Nil | 1 | — | X416 on one side | |
| | | W | 2 | — | X416 on both sides (one on each side) | |
| Z | | 1 | 1 | X416 on one side, X417 on the other side | | |
| L | | 1 | — | X416 on L unit side | | |
| H | | 1 | — | X416 on H unit side | | |
| LH | | 1 | 1 | X416 on L unit side, X417 on the other side | | |
| LH | | 1 | 1 | X416 on H unit side, X417 on the other side | | |
| L, H, LS, HS | | X417 | Nil | — | 1 | X417 on one side |
| L, H | | | W | — | 2 | X417 on both sides (one on each side) |
| LH | | | L | — | 1 | X417 on L unit side |
| LH | H | | — | 1 | X417 on H unit side | |

(Note) For LS and HS, the stroke adjusting unit is mounted on one side only.

Series MY2

Made to Order Specifications:

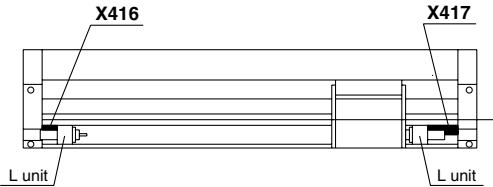
Please contact with SMC for further information on specifications, dimensions and delivery.

5 Holder Mounting Bracket..... ①, ②

-X416/X417

Example

- L units with one each of X416 and X417
MY2H25G-300L-X416Z



- L and H units, where X417 is mounted on L unit only and nothing on H unit
MY2H25G-300LH-X417L



How to order single pieces of stroke adjusting unit and holder mounting bracket

MY2H-A16L
MY2HT-A16L

-X417

• **Combination symbol**

| | |
|-----|---|
| Nil | Stroke adjusting unit + Holder mounting bracket |
| N | Holder mounting bracket only |

• **Holder mounting bracket**

| | |
|------|---------------------------|
| X416 | Holder mounting bracket 1 |
| X417 | Holder mounting bracket 2 |

- **Stroke adjusting unit model**

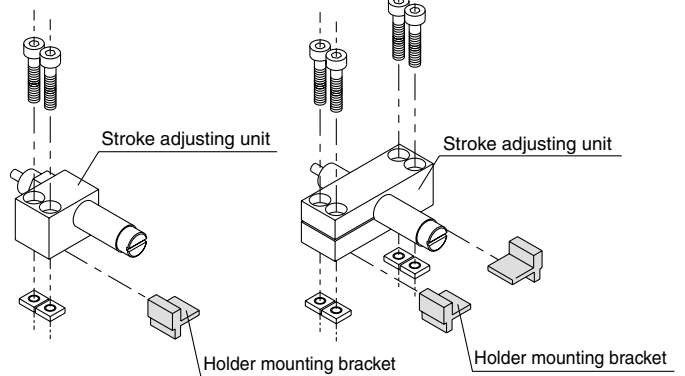
Note) Refer to "Option" table on pages 8-13-16 and 8-13-23.

Example

- **Stroke adjusting unit with holder mounting bracket**
MY2H-A25L-X416 (L unit for MY2H25 and X416 bracket)
- **Holder mounting bracket only**
MY2H-A25L-X416N (MY2H25 and X416 bracket for L unit)

MY2C, MY2H

MY2HT



Note) For MY2H, the parts are packed together when shipped.

MX□

MTS

MY□

CY□

MG□

CX□

D-

-X

20-

Data