

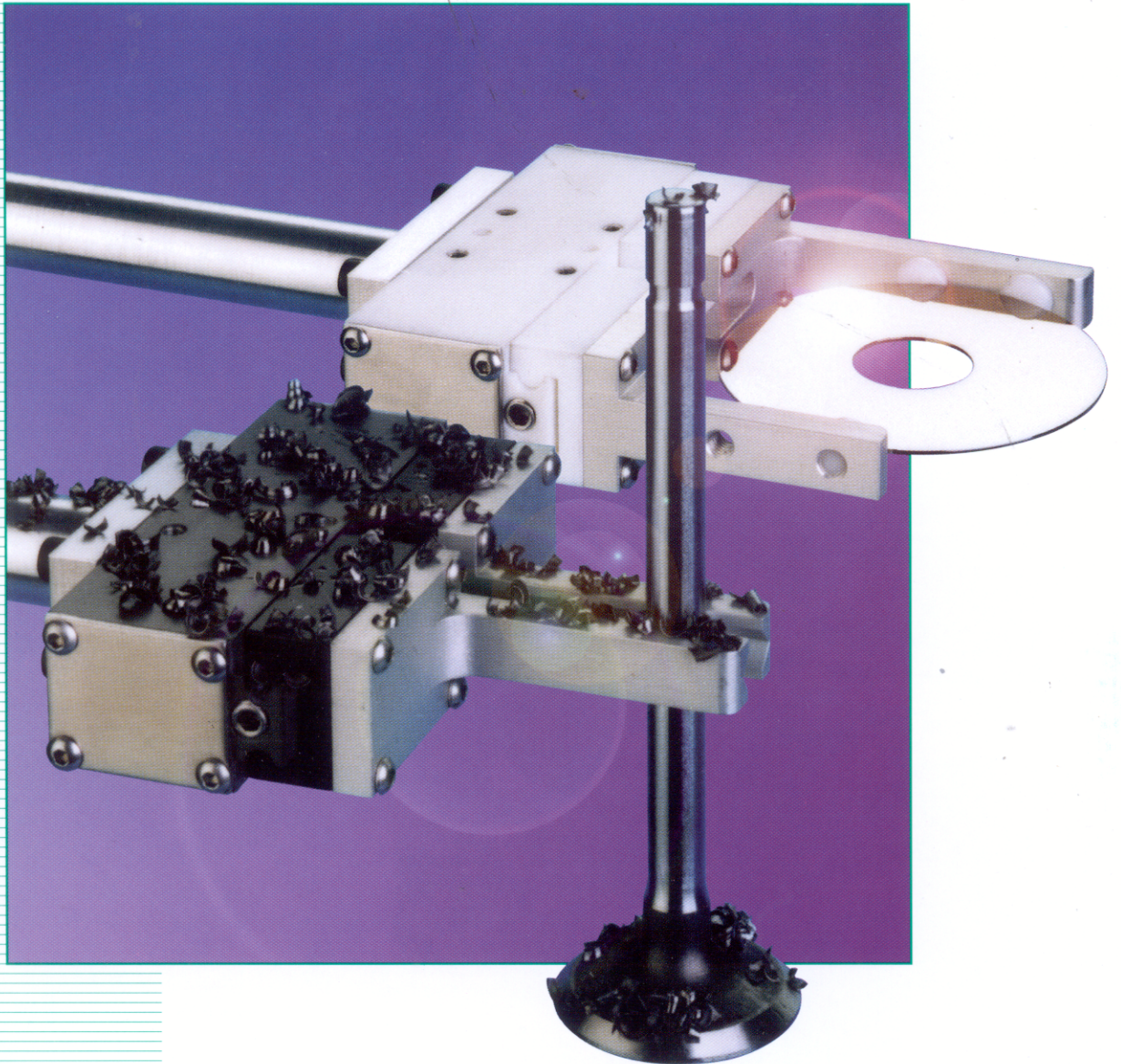


ZM002

Parallel Opening/Closing Type Gripper

MAGNUM[®] Series

2 Finger
130N, 450N



Compact gripper with double helix synchronization
Ultra accurate centering
PET construction for class one clean rooms
Aluminum construction for harsh environments
Auto switch ready

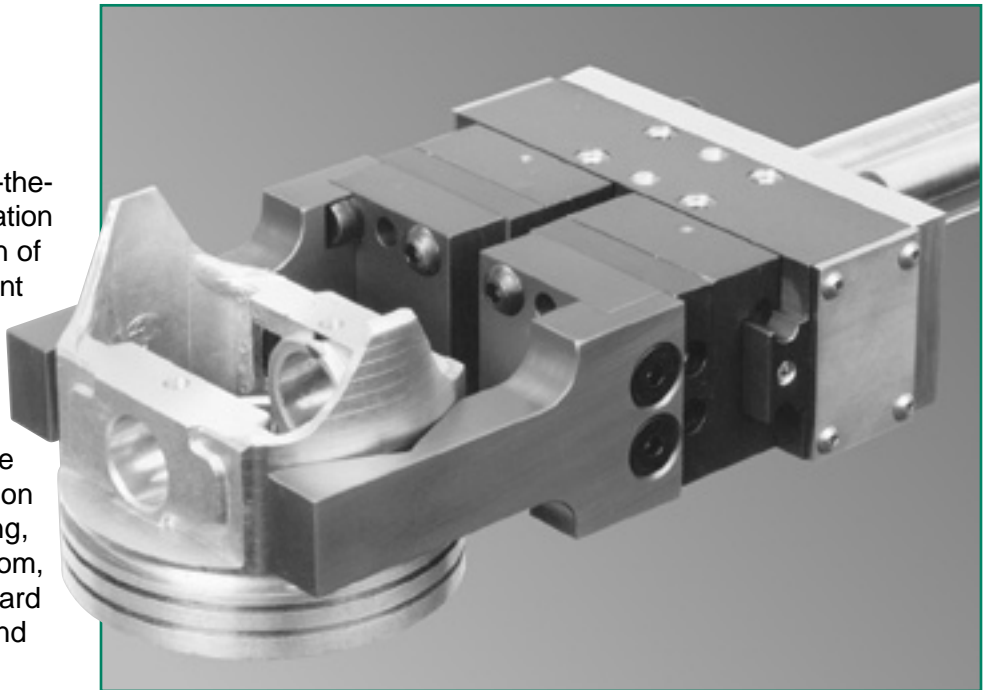
Parallel Opening/Closing Type Gripper

MAGNUM[®] Series

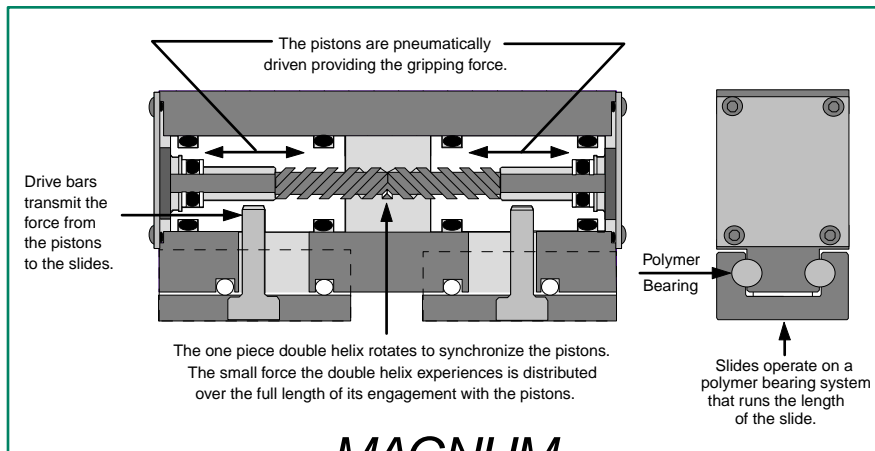
2 Finger 130N, 450N

Does It All

MAGNUM grippers are universally applicable "out-of-the-box". The use of third-generation technology and the selection of super tough, corrosive resistant materials allows the MAGNUM to efficiently serve day-to-day as well as tough, nearly impossible applications. Examples of the range of MAGNUM application environments include welding, grinding, machining, clean room, epitaxial wafer fabrication, hard disk fabrication, D.I. water and food processing.



Patented Synchronous Technology – Extended Life



The synchronous MAGNUM utilizes U.S. patent numbers 4,591,199; 5,657,973 and 5,755,475. The force and synchronizing double helix are independent systems. The double helix works only to center the part to ± 0.025 mm (± 0.0010 "). All of the gripping force is provided by two pistons that are driven pneumatically. The independence of the force and synchronization systems provides precision over the typical 10,000,000+ cycle life of the unit. In non-abusive applications the technology may deliver 20,000,000 or more cycles.

Parallel Opening/Closing Type Gripper

MAGNUM[®] Series

2 Finger 130N, 450N

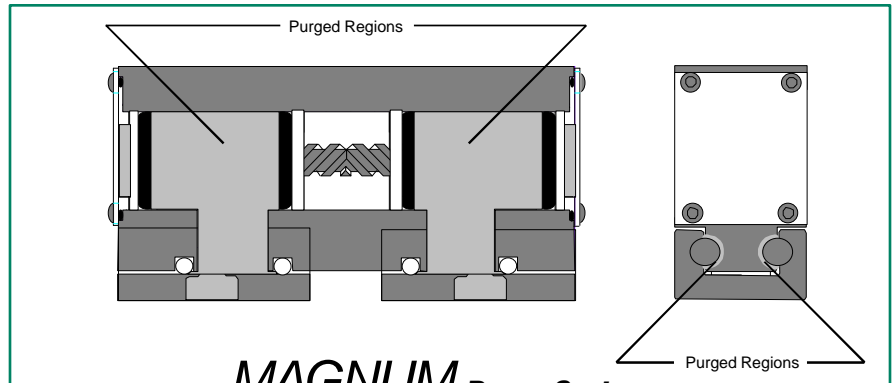
Double Sealed for Superior Integrity

The MAGNUM mechanism is double sealed to assure that the mechanism is isolated from the environment. In clean rooms and food processing this ensures environmental integrity. In harsh environments the double seals protect the MAGNUM from contamination that could lead to failure.

Clean and Dirty Purge System

Another patented (U.S. 5,755,475) feature of the MAGNUM family is a dual usage purge system (patent pending) that is part of every gripper.

The purge system facilitates use in up to Class One clean rooms (**An independent lab report is available**) and very dirty environments.



MAGNUM Purge System

Clean Rooms

In clean rooms the purge system is evacuated. Any contaminants from the pneumatic system that pass the seals of the gripper are eliminated from the environment.

Very Dirty Environments

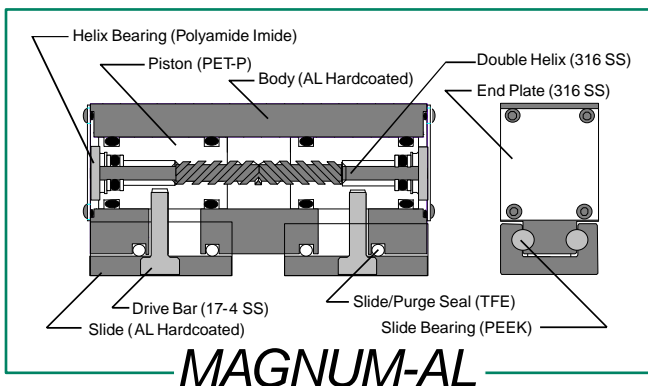
In very dirty environments the purge system is pressurized. Any debris that attempts to make its way under the slide bearings is cleared away by the pressure at the purge port.

The Ultimate Materials Force/Weight >200

All materials of the MAGNUM gripper are designed to eliminate maintenance and assure that the gripper functions in harsh environments.

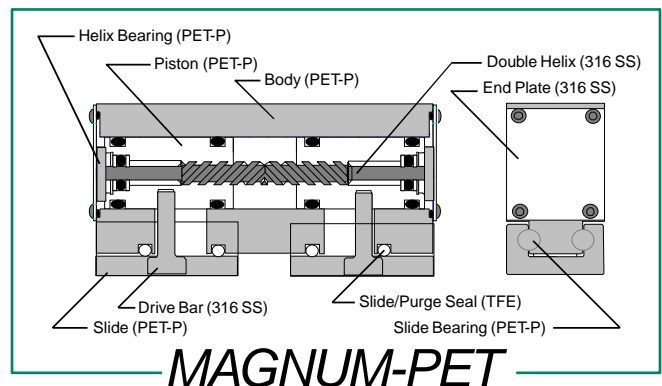
There are two material versions of the MAGNUM gripper: The MAGNUM-AL and the MAGNUM-PET. Each was developed to extend the out-of-the-box

applicability of the MAGNUM technology. The design and material selection allow the MAGNUM to provide Force/Weight ratios in excess of 200.



MAGNUM-AL

The "AL" version of the MAGNUM is intended for use in very dirty and explosive environments. All of the materials are chosen to be corrosion resistant as well as tough.



MAGNUM-PET

The PET unit is de-ionized (D.I.) water tolerant for use in hard disk and epitaxial fabrication. All materials used in the "PET" version of the MAGNUM comply with FDA requirements for food handling.

Parallel Opening/Closing Type Gripper

MAGNUM[®] Series

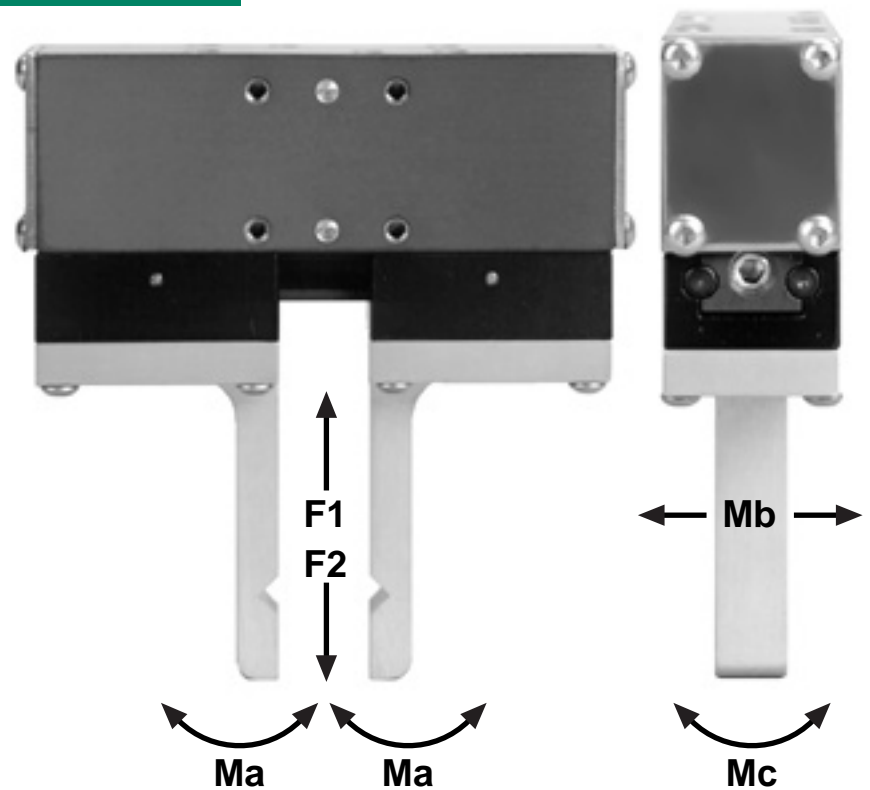
2 Finger 130N, 450N

Torque and Force Unmatched

The MAGNUM system uses a linear bearing concept. However, to minimize weight and size, advanced polymers are utilized rather than ball bearing rails. The torque and force capabilities of the MAGNUM family are maintained over the life of the gripper due to the length of the bearing surface over which the loads are distributed.

Lifetime Lubrication

The universal application of the MAGNUM grippers is made possible with the use of a lifetime lubricant. This allows the use of “dry air” and compliance with new and proposed regulations that forbid the use of lubricants in air lines. With an FDA rating of H1, this lifetime lubricant is also people and food “friendly”.



| MODEL | Ma : Nm (in-lbs.) | Mb : Nm (in-lbs.) | Mc : Nm (in-lbs.) | F1 : kg (lbs.) | F2 : kg (lbs.) |
|----------------|----------------------|----------------------|----------------------|-------------------|-------------------|
| MAGNUM-AL-130 | 24 (212) | 20 (177) | 16 (141) | 25 (55) | 20 (44) |
| MAGNUM-PET-130 | 10 (88) | 10 (88) | 10 (88) | 20 (44) | 15 (33) |
| MAGNUM-450-26 | 100 (840) | 80 (700) | 60 (530) | 56 (123) | 68 (150) |

Parallel Opening/Closing Type Gripper

MAGNUM[®] Series

2 Finger 130N, 450N

Gripper Ordering Information

Note: All grippers and seals are lubricated for life. All hardware is stainless steel. The standard lifetime lubricant is FDA rated H1 for food contact. All PET units are clean room ready and AL units are harsh environment ready via the use of the purge port system.

| Order Number | Body | Force, Each Jaw | Stroke |
|-------------------|----------|-----------------|--------------|
| MAGNUM-AL-130-13 | Aluminum | 130N (29lbs.) | 13mm (.512") |
| MAGNUM-AL-130-26 | Aluminum | 130N (29lbs.) | 26mm (1.02") |
| MAGNUM-PET-130-13 | PET | 130N (29lbs.) | 13mm (.512") |
| MAGNUM-PET-130-26 | PET | 130N (29lbs.) | 26mm (1.02") |
| MAGNUM-AL-450-26 | Aluminum | 450N (100lbs.) | 26mm (1.02") |

Gripper Accessory Kit Ordering Information

Note: Each kit includes a sensor and/or hardware to sense one position. Two kits are needed to handle both open and close.

| Accessory Kit (Field Installable) | Description | Applicable Models |
|-----------------------------------|--------------------------------|-------------------|
| M-KIT-IND-SOUR | Inductive-LED, DC Sourcing-PNP | All Models |
| M-KIT-IND-SINK | Inductive-LED, DC Sinking-NPN | All Models |
| M-KIT-REED | Reed-LED, MOV Protection | All Models |
| M-KIT-HALL-SINK | Hall Effect, DC Sinking-NPN | All Models |
| M-KIT-HWO | Hardware, Mounts any of above | All Models |
| M-KIT-HWO-450-12mm | Hardware, Mounts 12mm prox. | Model 450-26 Only |
| M-KIT-U-Harsh-4mm | 4mm Tubing | All Models |
| M-KIT-U-Harsh-6mm | 6mm Tubing | All Models |
| M-KIT-AFS-450-26 | Fail Safe, Active | Model 450-26 Only |

The right to change designs and specifications without notice is reserved. All data and dimensions in catalogs have been thoroughly checked for accuracy; however, responsibility for possible errors or omissions is not assumed. A one-year limited warranty is provided for this product by ZAYTRAN, Inc. Please view this limited warranty at: www.grippers.com/warranty.htm

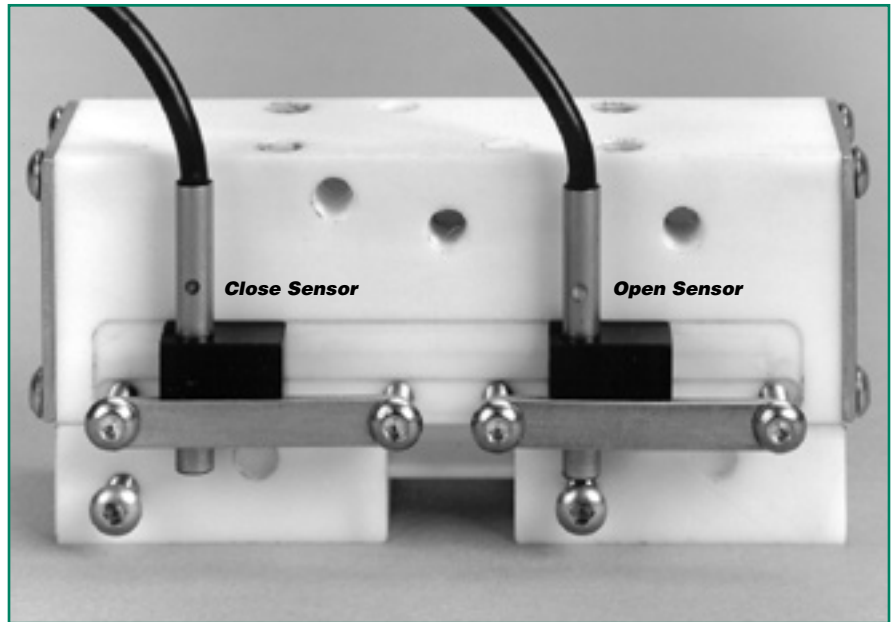
Parallel Opening/Closing Type Gripper

MAGNUM[®] Series

2 Finger 130N, 450N

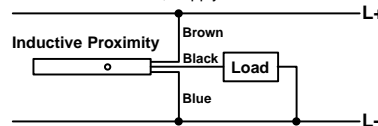
Sensor System

The complete range of sensors are available as part of the MAGNUM system. All kits shown at right work on all models (130 & 450). To order the mounting hardware only for the types of sensors shown use #M-Kit-HWO. To order mounting hardware for a 12mm proximity on the model 450 use #M-KIT-HWO-450-12mm.



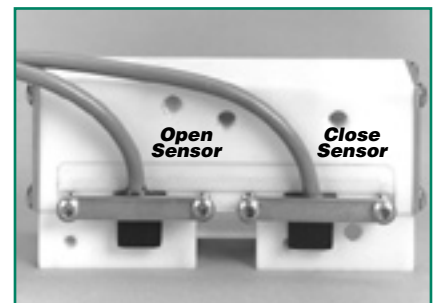
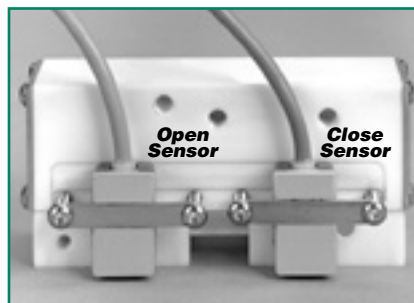
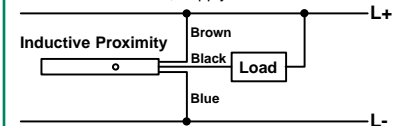
Inductive Proximity Sensor Kit, 4mm DC-Sourcing, PNP, 2M Cable

Kit #M-Kit-Ind-Sour adds 10.6mm
10-30 VDC, 100 mA Max. Current & Inrush
Status Indicator: LED, Supply Current <9.5 mA



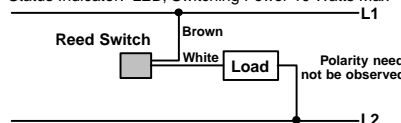
Inductive Proximity Sensor Kit, 4mm DC-Sinking, NPN, 2M Cable

Kit #M-Kit-Ind-Sink adds 10.6mm
10-30 VDC, 100 mA Max. Current & Inrush
Status Indicator: LED, Supply Current <9.5 mA



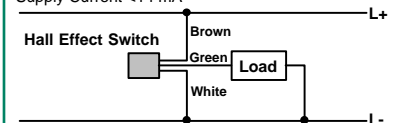
Reed Switch Sensor Kit SPST Normally Open, 9' Cable

Kit #M-Kit-Reed adds 11.9mm
10-120 VDC/VAC, 0.5 Amp Max. Current, MOV Protection
Status Indicator: LED, Switching Power 10 Watts Max



Hall Effect Sensor Kit DC-Sinking, NPN, 9' Cable

Kit #M-Kit-Hall-Sink adds 7.3mm
6-24 VDC, 20 mA Max. Current
Supply Current <14 mA



Parallel Opening/Closing Type Gripper

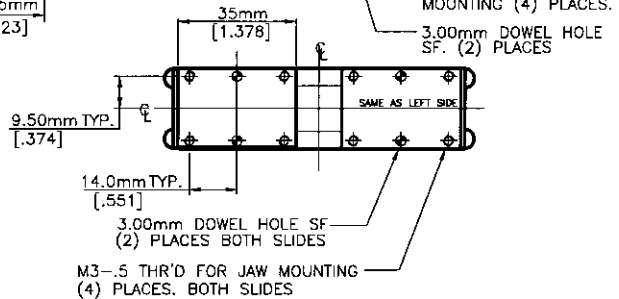
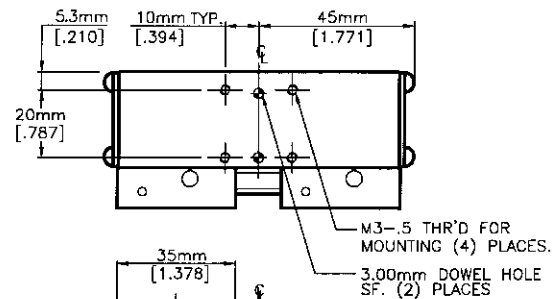
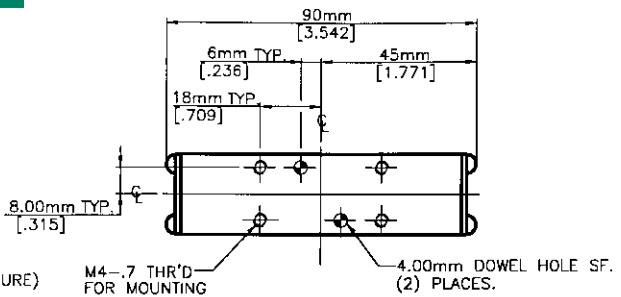
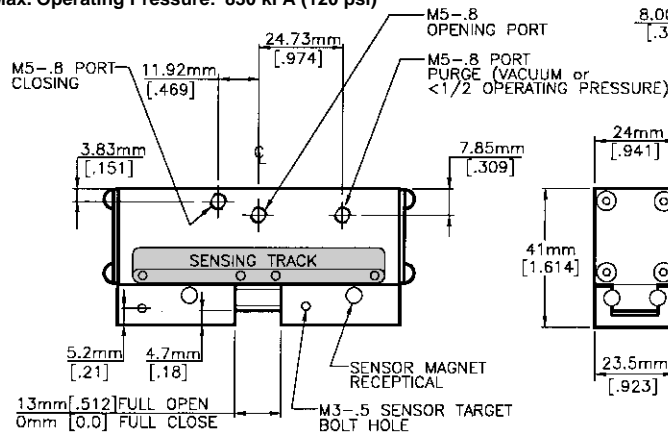
MAGNUM[®] Series

2 Finger 130N, 450N

MAGNUM-(AL or PET)-130-13

Gripping Force, Open & Close, Each Jaw

| | |
|--------------------------|--|
| @ 690 kPa (100 psi): | 130N (29 lbs.) |
| Stroke: | 13.0 mm (.512") |
| Weight PET: | 127g (0.28 lbs.) |
| Weight AL: | 188g (0.42 lbs.) |
| Displacement: | 6.1 cm ³ (0.373 in ³) |
| Max. Operating Pressure: | 830 kPa (120 psi) |



NOTE: All jaw and gripper mounting holes are a minimum of one diameter deep on MAGNUM-AL units, one and one half diameters deep on MAGNUM-PET units. MAGNUM-AL jaw and mounting holes have SS coil inserts. MAGNUM-PET maximum torques: .8 Nm [7 in-lb] for 3mm fasteners .9 Nm [8 in-lb] for 4mm fasteners

Parallel Opening/Closing Type Gripper

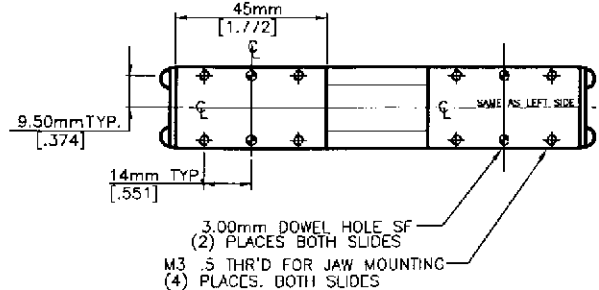
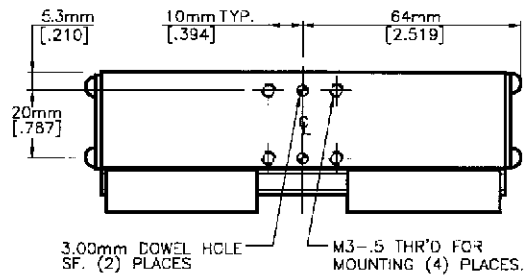
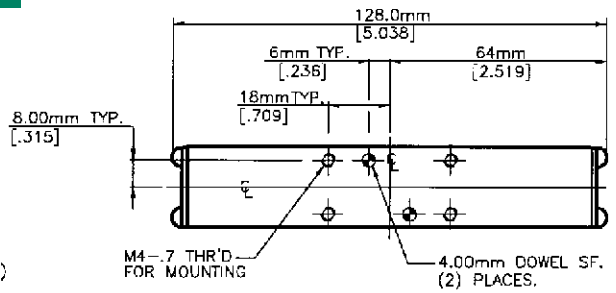
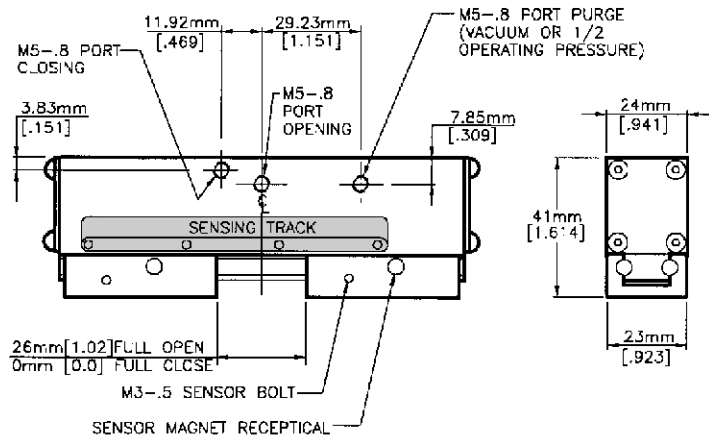
MAGNUM[®] Series

2 Finger 130N, 450N

MAGNUM-(AL or PET)-130-26

Gripping Force, Open & Close, Each Jaw

| | |
|--------------------------|---|
| @ 690 kPa (100 psi): | 130N (29 lbs.) |
| Stroke: | 26.0 mm (1.02") |
| Weight PET: | 170g (0.38 lbs.) |
| Weight AL: | 252g (0.56 lbs.) |
| Displacement: | 12.2 cm ³ (0.746 in ³) |
| Max. Operating Pressure: | 830 kPa (120 psi) |



NOTE: All jaw and gripper mounting holes are a minimum of one diameter deep on MAGNUM-AL units, one and one half diameters deep on MAGNUM-PET units. MAGNUM-AL jaw and mounting holes have SS coil inserts. MAGNUM-PET maximum torques: .8 Nm [7 in-lb] for 3mm fasteners .9 Nm [8 in-lb] for 4mm fasteners

Parallel Opening/Closing Type Gripper

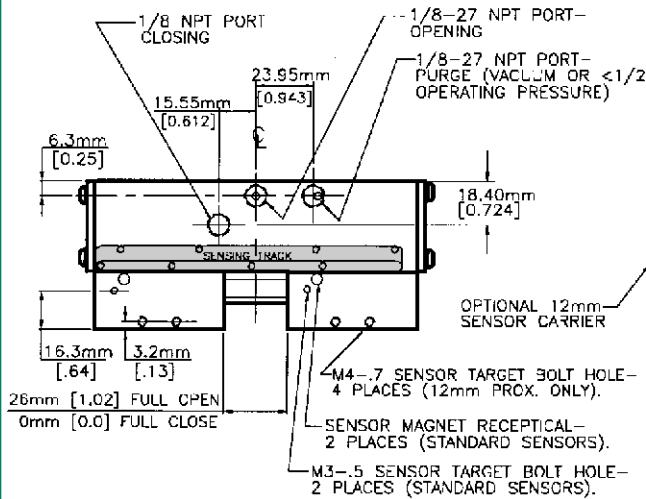
MAGNUM[®] Series

2 Finger 130N, 450N

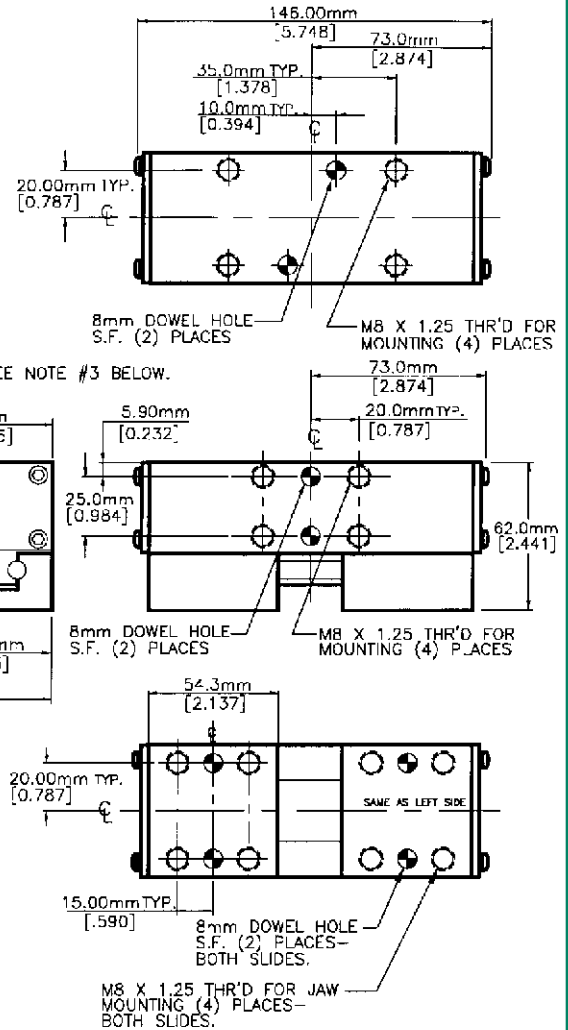
MAGNUM-AL-450-26

Gripping Force, Open & Close, Each Jaw

| | |
|--------------------------|--|
| @ 690 kPa (100 psi): | 450N (100 lbs.) |
| Stroke: | 26.0 mm (1.02") |
| Weight: | 1.09kg (2.39 lbs.) |
| Displacement: | 18.7 cm ³ (1.14 in ³) |
| Max. Operating Pressure: | 830 kPa (120 psi) |



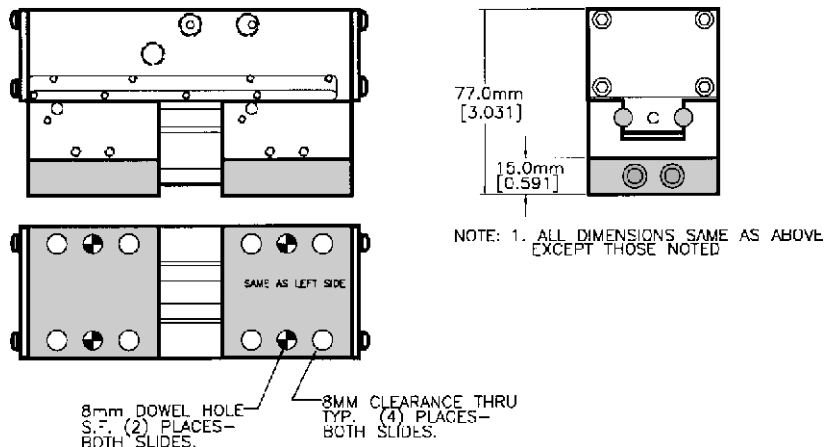
- NOTE:
1. ALL JAW AND GRIPPER MOUNTING HOLES ARE A MINIMUM OF ONE DIAMETER DEEP.
 2. ALL MAGNUM-450 JAW AND MOUNTING HOLES HAVE STAINLESS STEEL COIL INSERTS.
 3. WHEN USING CERTAIN 12mm PROXIMITY SENSORS, SENSOR MAY EXTEND PAST THE MOUNTING SURFACE.



Active Fail Safe Accessory M-Kit-AFS-450-26

| | |
|--|--------------------|
| Closing Force @ Full Open: | 111N (25 lbs.) |
| Closing Force @ Full Close: | 67N (15 lbs.) |
| Weight: | 1.35kg (2.97 lbs.) |
| Min. Operating Pressure: | 415 kPa (60 psi) |
| Not intended for use as a single acting gripper. | |

The AFS accessory will assure that parts are not dropped should the pneumatic pressure fail. Jaws must be designed with "spring", or that encompass the part. Some movement of the jaws will occur as pressure fails.



Global Manufacturing, Distribution and Service

U.S. Branch Offices

SMC Pneumatics Inc. (Atlanta)
1440 Lakes Parkway, Suite 600
Lawrenceville, GA 30043
Tel: (770) 624-1940
FAX: (770) 624-1943

SMC Pneumatics Inc. (Austin)
2324-D Ridgpoint Drive
Austin, TX 78754
Tel: (512) 926-2646
FAX: (512) 926-7055

SMC Pneumatics Inc. (Boston)
Zero Centennial Drive
Peabody, MA 01960
Tel: (978) 326-3600
FAX: (978) 326-3700

SMC Pneumatics Inc. (Charlotte)
5029-B West W.T. Harris Blvd.
Charlotte, NC 28269
Tel: (704) 597-9292
FAX: (704) 596-9561

SMC Pneumatics Inc. (Chicago)
27725 Diehl Road
Warrenville, IL 60555
Tel: (630) 393-0080
FAX: (630) 393-0084

SMC Pneumatics Inc. (Cincinnati)
4598 Olympic Blvd.
Erlanger, KY 41018
Tel: (606) 647-5600
FAX: (606) 647-5609

SMC Pneumatics Inc. (Cleveland)
2305 East Aurora Road
Twinsburg, OH 44087
Tel: (330) 963-2727
FAX: (330) 963-2730

SMC Pneumatics Inc. (Columbus)
3687 Corporate Drive
Columbus, OH 43231
Tel: (614) 895-9765
FAX: (614) 895-9780

SMC Pneumatics Inc. (Dallas)
12801 N. Stemmons Frwy, Suite 815
Dallas, TX 75234
Tel: (972) 406-0082
FAX: (972) 406-9904

SMC Pneumatics Inc. (Detroit)
44345 Macomb Industrial Dr.
Clinton Township, MI 48036
Tel: (810) 463-2300
FAX: (810) 463-2344

SMC Pneumatics Inc. (Houston)
9001 Jameel, Suite 180
Houston, TX 77040
Tel: (713) 460-0762
FAX: (713) 460-1510

SMC Pneumatics Inc. (Indianapolis)
3011 N. Franklin Rd.
Indianapolis, IN 46226
Tel: (317) 899-4743
FAX: (317) 898-4808

SMC Pneumatics Inc. (Los Angeles)
14191 Myford Road
Tustin, CA 92780
Tel: (714) 669-1701
FAX: (714) 669-1715

SMC Pneumatics Inc. (Milwaukee)
16850 W. Victor Road
New Berlin, WI 53151
Tel: (414) 827-0080
FAX: (414) 827-0092

SMC Pneumatics Inc. (Minneapolis)
990 Lone Oak Road, Suite 162
Eagan, MN 55121
Tel: (651) 688-3490
FAX: (612) 688-9013

SMC Pneumatics Inc. (Nashville)
5000 Linbar Drive, Suite 297
Nashville, TN 37211
Tel: (615) 331-0020
FAX: (615) 331-9950

SMC Pneumatics Inc. (Newark)
3434 US Hwy. 22 West, Suite 110
Somerville, NJ 08876
Tel: (908) 253-3241
FAX: (908) 253-3452

SMC Pneumatics Inc. (Phoenix)
2001 W. Melinda Lane
Phoenix, AZ 85027
Tel: (602) 492-0908
FAX: (602) 492-9493

SMC Pneumatics Inc. (Portland)
14107 N.E. Airport Way
Portland, OR 97230
Tel: (503) 252-9299
FAX: (503) 252-9253

SMC Pneumatics Inc. (Richmond)
5377 Glen Alden Drive
Richmond, VA 23231
Tel: (804) 222-2762
FAX: (804) 222-5221

SMC Pneumatics Inc. (Rochester)
245 Summit Point Drive
Henrietta, NY 14467
Tel: (716) 321-1300
FAX: (716) 321-1865

SMC Pneumatics Inc. (San Francisco)
85 Nicholson Lane
San Jose, CA 95134
Tel: (408) 943-9600
FAX: (408) 943-9111

SMC Pneumatics Inc. (St. Louis)
4130 Rider Trail North
Earth City, MO 63045
Tel: (314) 209-0080
FAX: (314) 209-0085

SMC Pneumatics Inc. (Tampa)
8507-H Benjamin Road
Tampa, FL 33634
Tel: (813) 243-8350
FAX: (813) 243-8621

SMC Pneumatics Inc. (Tulsa)
10203 A East 61st Street
Tulsa, OK 74146
Tel: (918) 252-7820
FAX: (918) 252-9511

Worldwide Authorized MAGNUM Subsidiaries

Australia
SMC Pneumatics (Australia) Pty. Ltd.
18 Hudson Avenue, P.O. Box 581,
Castle Hill, N.S.W. Australia 2154
Tel: (02) 354 8222
Fax: (02) 634 7764

Canada
SMC Pneumatics (Canada) Ltd.
6768 Financial Drive
Mississauga, Ontario
L5N 7J6
TEL: (905) 812-0400
Fax: (905) 812-8686

New Zealand
SMC Pneumatics (New Zealand) Ltd.
8c Sylvia Road, P.O. Box 62226
Mount Wellington, Auckland, New Zealand
Tel: (02) 573 0900
Fax: (09) 573 0905

United Kingdom
SMC Pneumatics (UK) Ltd
Vincent Avenue, Crownhill
Milton Keynes MK8 0AN
Tel: 01908 563888
Fax: 01908 5611825

For a direct connection to your local SMC sales office call:
1(800) SMC-SMC1 1(800) 762-7621

For Repair and Technical Support call ZAYTRAN:
Tel: (440) 324-2814 Fax: (440) 324-3552

 **SMC**[®] SMC Pneumatics Inc.
U.S. Headquarters
3011 N. Franklin Rd.
Indianapolis, IN 46226
Tel: 317.899.4440
Fax: 317.899.3102
<http://www.smcusa.com>