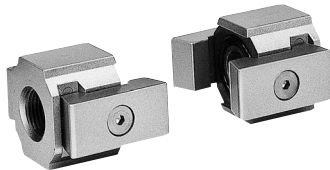


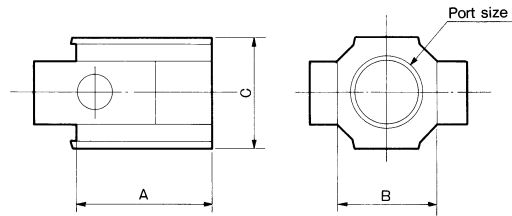
## Piping Adaptor

M5x0.8, 1/8•1/4•3/8•1/2•3/4•1

Allows for ease of installation and maintenance.



E30-02



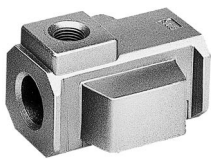
Model	Port size	A	B	C	Applicable model
E10-M5	M5x0.8	.63 (16)	.55 (14)	.69 (17.5)	<b>NAC1000•NAW1000</b> <b>NAF1000•NAR1000•NAL1000</b>
E20-N01	1/8	.91 (23)	.87 (22)	.87 (22)	<b>NAC2000</b>
E20-N02	1/4				<b>NAF2000•NAR2000•NAW2000</b>
E20-N03	3/8				<b>NAL2000•NAFM2000•NAFD2000</b>
E30-N02	1/4	1.02 (26)	1.14 (29)	1.35 (34.2)	<b>NAC2500•NAC3000</b> <b>NAF3000•NAR3000•NAW3000</b>
E30-N03	3/8				
E30-N04	1/2	1.57 (40)	1.14 (29)	1.35 (34.2)	<b>NAL3000•NAFM3000•NAFD3000</b>
E40-N02	1/4	1.30 (33)	1.38 (35)	1.66 (42.2)	<b>NAC4000</b>
E40-N03	3/8				<b>NAF4000•NAR4000•NAW4000</b>
E40-N04	1/2				
E40-N06	3/4	1.97 (50)	1.38 (35)	1.66 (42.2)	<b>NAL4000•NAFM4000•NAFD4000</b>
E50-N06	3/4	1.42 (36)	1.73 (44)	1.82 (46.2)	<b>NAC4000-N06•NAC4040-N06</b> <b>NAF400-N06</b>
E60-N06	3/4	1.57 (40)	2.13 (54)	2.17 (55.2)	<b>NAC5000•NAC5500•NAC6000</b>
E60-N10	1				<b>NAF5000•NAR5000•NAL5000</b> <b>NAF6000•NAR6000•NAL6000</b>

Inch (mm)

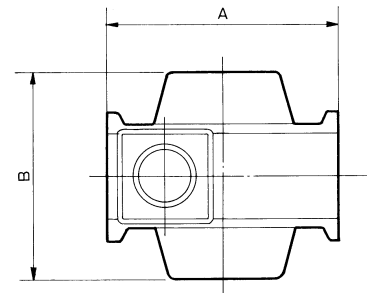
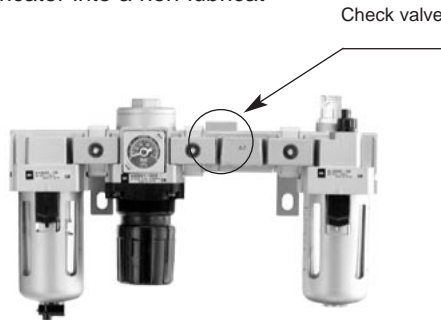
\*When piping adaptor with bracket is required, please order as follows.  
Example: L-type bracket: E30L-N02  
T-type bracket: E30T-N02

## Check Valve

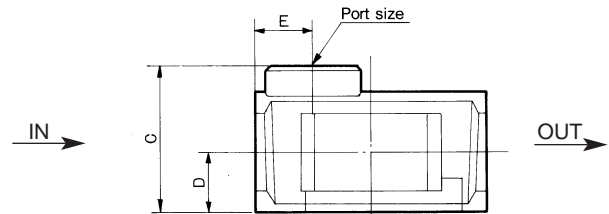
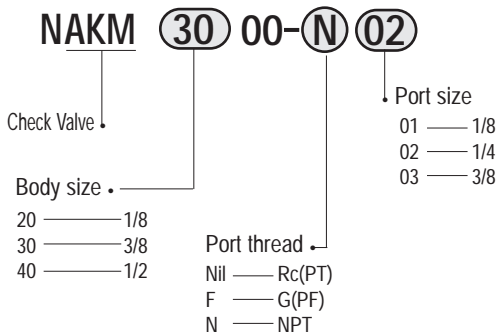
The check valve spacer is designed to prevent back flow of lubricated air from a lubricator into a non-lubricated line.



NAKM3000



### How To Order



Model	Port size	A	B	C	D	E	Applicable model
NAKM2000	1/8•1/4	1.57 (40)	1.57 (40)	1.10 (28)	.43 (11)	.43 (11)	<b>NAC2000•NAC2010</b>
NAKM3000	1/8•1/4	2.09 (53)	1.89 (48)	1.34 (34)	.55 (14)	.51 (13)	<b>NAC2500•NAC2510</b> <b>NAC3000•NAC3010</b>
NAKM4000	1/4•3/8	2.76 (70)	2.13 (54)	1.65 (42)	.71 (18)	.59 (15)	<b>NAC4000•NAC4010</b>