

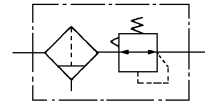
Mist Separator/Regulator

NAWM2000, 3000, 4000



- Combination Mist Separator/Regulator that provides 0.3µm filtration.
- Combination of the Mist Separator and Regulator saves space.
- Modular design connects with other SMC air preparation equipment.

ANSI Symbol



NAWM4000-N04



NAWM2000-N02-C

Specifications

Model	NAWM2000	NAWM3000	NAWM4000
Port size NPT	1/8 • 1/4	1/4 • 3/8	1/4 • 3/8 • 1/2
Proof pressure psig (MPa)	220 (1.5)		
Max. operating pressure psig (MPa)	150 (1.0)		
Regulating range psig (MPa)	7 ~ 120 (0.05 ~ 0.85)		
Gauge connecting port	1/8 NPT	1/8 NPT	1/4 NPT
Ambient & media temperature	23° ~ 140° F (-5 ~ 60° C)		
Filtration	0.3µm		
Flow capacity SCFM*	5.3	11.7	29
Bowl material	Polycarbonate		
Construction/Regulator	Relieving style		
Weight lbs. (kgf)	.97 (0.44)	1.3 (0.59)	2.76 (1.25)
Bowl guard-STD	●	●	●

* Supply Pressure = 70 psig



NAWM3000-N03BG



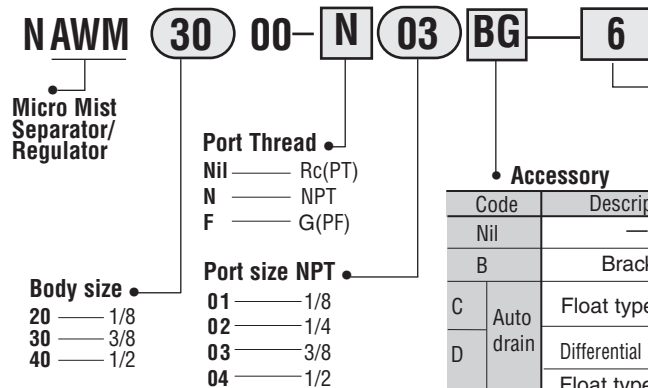
NAWM2000-N02BG-C

Accessories (Optional)

Name	Part No.		
	NAWM2000	NAWM3000	NAWM4000
Bracket	B220	B320	B420
Pressure gauge	K40A-MP1.0-N01M	K40A-MP1.0-N01M	K50A-MP1.0-N02M
Float Auto drain*	N.O.	NAD43	NAD44
	N.C.	NAD53	NAD54
Differential pressure auto drain	NAD62-C	—	—

* Min. operating pressure: N.O.–15 psig, N.C.– 22 psig.

How To Order



Optional specifications

- Nil — None
- 1* — 3-30psig (0.02 ~ 0.2MPa) setting
- 2 — Metal bowl
- 4* — 3-30psig (0.02 ~ 0.4MPa) setting
- 6 — Nylon bowl
- 8 — Metal bowl with level gauge (only NAWM3000•NAWM4000)
- C — With bowl guard (Only NAWM2000)
- J — Drain Guide 1/4 Pipe Thread
- N — Non-relieving
- R — IN-OUT reversal
- W — Drain Cock with Barb Fitting for Nylon tube (ø6mm OD/ø4mm ID)

Accessory

Code	Description	Applicable model	
Nil	—	—	
B	Bracket	NAWM2000-NAWM4000	
C	Auto drain	Float type (N.C.)	NAWM3000-NAWM4000
		Differential Pressure	NAWM2000
D	Auto drain	Float type (N.O.)	NAWM3000-NAWM4000
		Pressure Gauge	NAWM2000-NAWM4000

When specifying more than one option, please list numerically, then alphabetically.
*Not a maximum setting. Option 1 is more precise in the range of 3-30 psig. Option 4 is more precise in the range of 3-60 psig.

- ▼ Combination
- No Combination
- Refer to "How to Order"

Accessories and Combinations

Accessories	Suffix	D	D	C	1	2	4	6	8	C	J	N	R	W	Applicable Model		
															NAWD2000	NAWD3000	NAWD4000
Differential pressure auto drain	D				▼	▼	▼	▼	●	●	▼	▼	▼	▼	▼	▼	▼
Float auto drain (N.O)	D				▼	▼	▼	▼	●		▼	▼	▼	▼	▼	▼	▼
Float auto drain (N.C)	C				▼	▼	▼	▼	●		▼	▼	▼	▼	▼	▼	▼
3 ~ 30 psi (0.02 ~ 0.2 MPa)	-1	▼	▼	▼		▼		▼	●	●	●	▼	▼	●	▼	▼	▼
Metal bowl	-2	▼	▼	▼	▼	▼	▼	▼		●	●	▼	▼	▼	▼	▼	▼
3 ~ 60 psi (0.02 ~ 0.4 MPa)	-4	▼	▼	▼	▼	▼	▼	▼	●	●	●	▼	▼	●	▼	▼	▼
Nylon bowl	-6	▼	▼	▼	▼	▼	▼	▼		●	●	▼	▼	●	▼	▼	▼
Metal bowl with level gauge	-8		▼	▼	▼	▼	▼	▼		●	●	▼	▼	▼	▼	▼	▼
With bowl guard	-C	▼			▼	▼	▼	▼				▼	▼	▼	▼	▼	▼
Drain guide (1/4)	-J				▼	▼	▼	▼	●		▼	▼	▼	▼	▼	▼	▼
Non-relieving	-N	▼	▼	▼	▼	▼	▼	▼	●	●	●	▼	▼	●	▼	▼	▼
IN-OUT reversal (Right - Left)	-R	▼	▼	▼	▼	▼	▼	▼	●	●	●	▼	▼	●	▼	▼	▼
With barb fitting	-W				▼	▼	▼	▼				▼	▼	▼	▼	▼	▼

Setting

- ❶ The adjustment knob is a locking type. Pull the knob away from the body until the orange band is visible. Adjust as necessary and push the knob back into its locked position to prevent accidental setting change.



- ❷ Clockwise rotation of the knob results in a pressure increase and vice-versa.
- ❸ Check supply pressure before adjusting pressure.

Precautions

<Installation>

- ❶ Air flush piping before installation.
- ❷ Use of the piping adaptors will ease installation.

<Atmosphere>

Polycarbonate bowls may be damaged and possibly fail if exposed to synthetic oils, thinner solvents, trichlorethylene, kerosene and other aromatic hydrocarbons. If used in above atmosphere, please use a metal bowl.

<Auto Drain>

Float type (Normally open)

- ❶ Drain line should be 5/16 in. (8mm) or more and should be less than 16.5 ft. (5m). Be sure not to have any upward turns in the drain line which would prevent drainage.
- ❷ Unsuitable for flow below 3.5 scfm(100Nℓ/min).
- ❸ Min. operating pressure 15 psig (0.1 MPa).

Float type (Normally closed)

- ❶ Suitable for a compressor with capacity lower than 0.75kw.
- ❷ Min. operating pressure 22 psig (0.15 MPa).
- ❸ Drain piping should be 5/32 in. (4mm) or greater and also less than 16.5 ft. (5m) in length.
- ❹ Install vertically.

Differential type

- ❶ Min. operating pressure 15 psig (0.1 MPa).
- ❷ Soft nylon tube of more than 3/32 in. (2.5mm) is recommended for drain piping. The overall length should be less than 16.5 ft. (5m). Be sure not to have any upward turns in the piping.
- ❸ Install vertically.

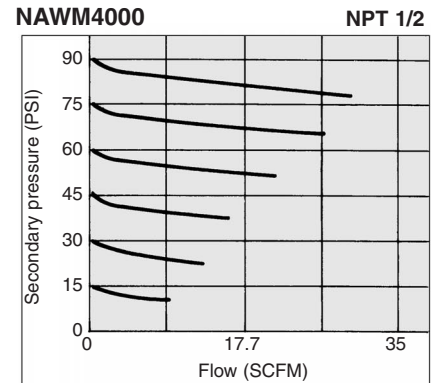
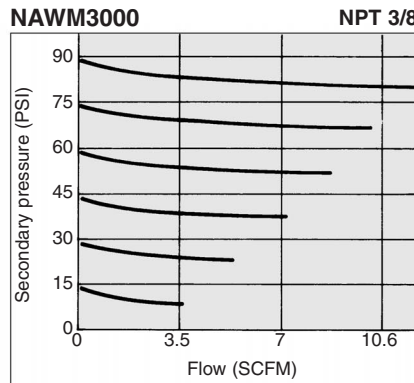
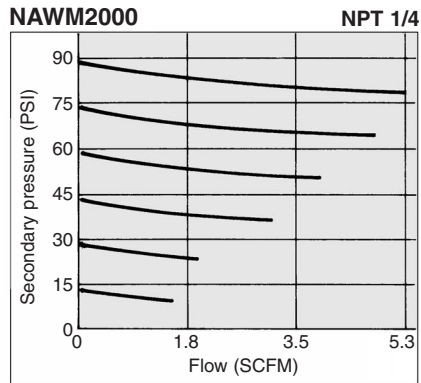
Maintenance

Filter element to be changed after 1 year of when a pressure drop of 15 psi (0.1 MPa) is reached.

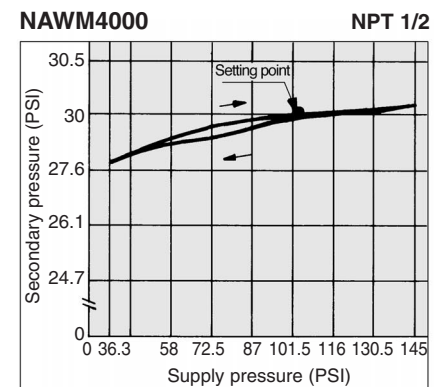
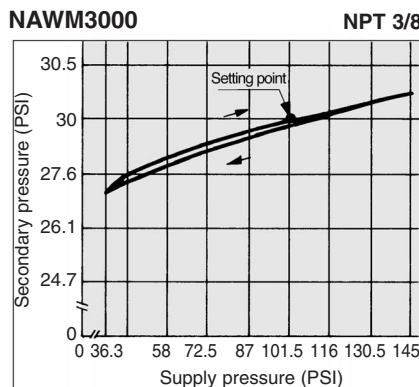
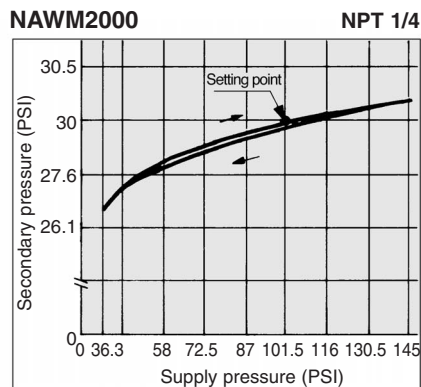
Mist Separator/Regulator

NAWM2000, 3000, 4000

Conditions: Supply pressure - 100 PSI

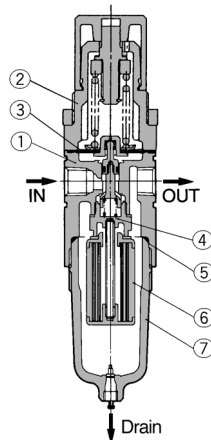


Conditions—100psi Supply Pressure, 30psi Set Pressure, .71SCFM Flow Rate

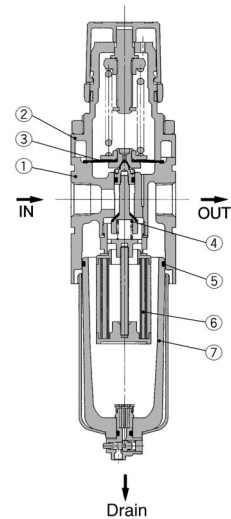


Construction/Parts List

NAWM2000



NAWM3000•4000



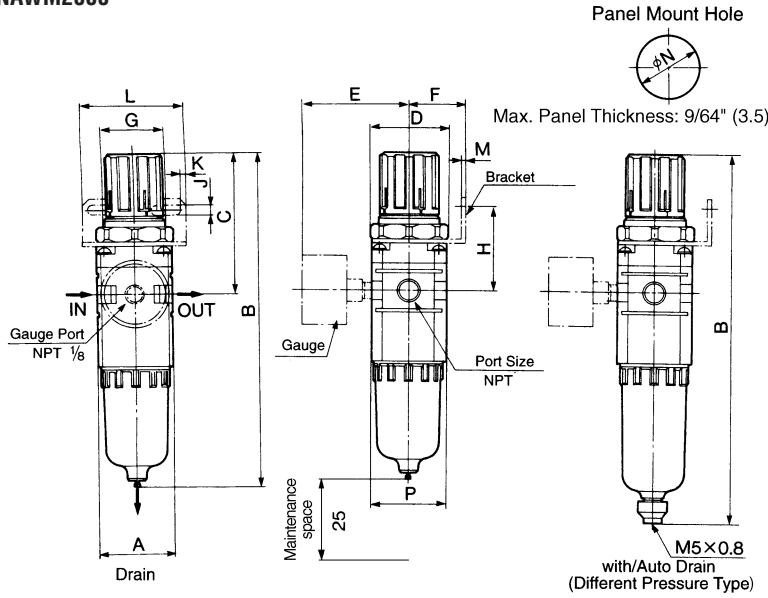
Main Parts

No.	Name	Material			Note
		NAWM2000	NAWM3000	NAWM4000	
①	Body	Zinc Die Cast	Aluminum Die Cast		Platinum silver painting
②	Bonnet	Polyacetal		Aluminum Die Cast	Black painting

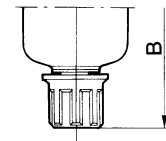
Component Parts List

No.	Parts Name	Material	Part No.		
			NAWM2000	NAWM3000	NAWM4000
③	Diaphragm ass'y	NBR	1349161A	131515A	131614A
④	Valve Guide	ZDC	131426	131565	131665
⑤	Bowl O-ring	NBR	11297	111512	111636
⑥	Element Ass'y	-	630611	630617	630623
⑦	Bowl and Guard Ass'y	Polycarbonate/SPC	NC200F-C	NC300F	NC400F

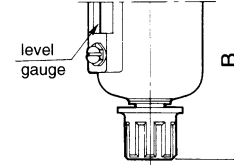
NAWM2000



with metal bowl

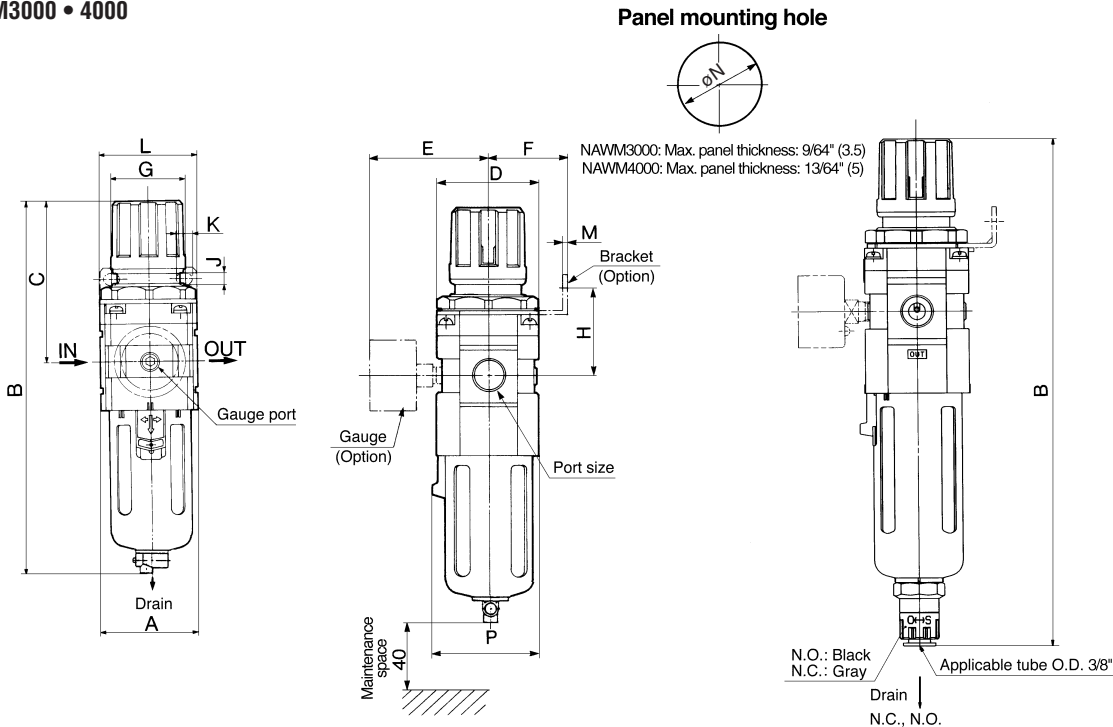


metal bowl with level gauge



Model	Metal bowl	Metal bowl with level gauge
	B	B
NAWM2000	54.71 (179.5)	—
NAWM3000	71.78 (235.5)	77.87 (255.5)
NAWM4000	87.47 (287)	93.57 (307)

NAWM3000 • 4000



With float type auto drain

Model	Port Size NPT	A	B	C	D	E	With Bracket							N	P	With Auto Drain	
							F	G	H	J	K	L	M			Float	Differential Pressure
							B	B									
NAWM2000	1/8 • 1/4	1.57 (40)	7.07 (179.5)	3.07 (78)	1.69 (43)	2.28 (58)	1.18 (30)	1.34 (34)	1.73 (44)	.21 (5.4)	.61 (15.4)	2.17 (55)	.09 (2.3)	1.32 (33.5)	1.57 (40)	—	7.93 (201.5)
NAWM3000	1/4 • 3/8	2.09 (53)	8.76 (222.5)	3.64 (92.5)	2.09 (53)	2.44 (62)	1.61 (41)	1.57 (40)	1.81 (46)	.26 (6.5)	.31 (8.0)	2.09 (53)	.09 (2.3)	1.67 (42.5)	2.20 (56)	10.37 (263.5)	—
NAWM4000	1/4 • 3/8 • 1/2	2.76 (70)	10.79 (274)	4.41 (112)	2.76 (70)	2.76 (70)	1.97 (50)	1.97 (50)	2.13 (54)	.33 (8.5)	.41 (10.5)	2.76 (70)	.09 (2.3)	2.07 (52.5)	2.87 (73)	12.40 (315)	—