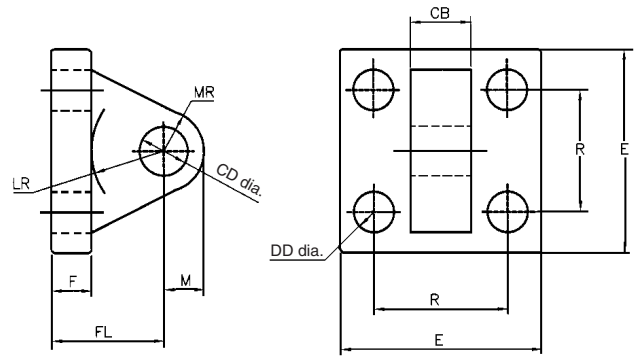


Series NCA1

Accessory Bracket Dimensions

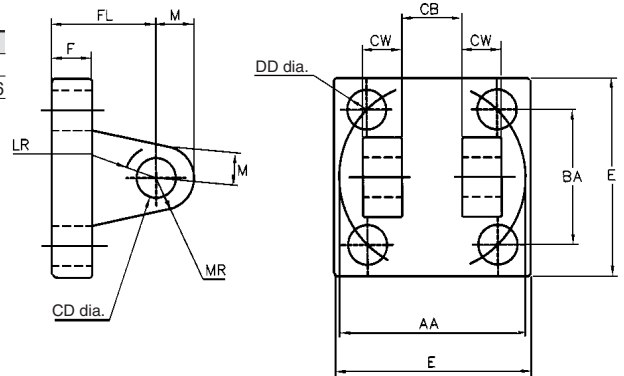
Eye Bracket

Part no.	CB	CD	DD	E	F	FL	LR	M	MR	R
NCA1-P150	3/4	1/2	13/32	2 1/2	3/8	1 1/8	3/4	1/2	9/16	1.63
NCA1-P325	1 1/4	3/4	17/32	3 1/2	5/8	1 7/8	1 1/4	3/4	7/8	2.56



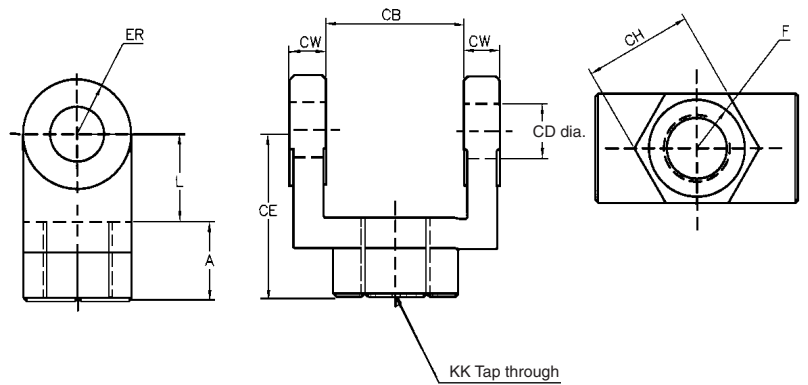
Clevis Bracket

Part no.	AA	BA	CB	CD	CW	DD	E	F	FL	LR	M	MR
NCA1-CB150	2.3	1 5/8	0.785	1/2	1/2	3/8 -24	2 1/2	3/8	1 1/8	1/2	1/2	9/16
NCA1-CB325	3.6	2 9/16	1.265	3/4	5/8	1/2 -20	3 1/2	5/8	1 7/8	1 1/16	3/4	1 1/16



Rod Clevis

Part no.	CB	CD	CE	CH	CW	F	L	A	KK	ER
NY-150	0.765	0.5	1 1/2	1	1/2	1	3/4	3/4	7/16-20	1/2
NY-325	1.265	0.75	2 3/8	1 3/8	5/8	1 1/4	1 1/4	1 1/8	3/4-16	3/4



Order to Match Rod Thread

Rod Eye

Part no.	A	CA	CB	CD	ER	KK
NI-150	3/4	1 1/2	3/4	1/2	5/8	7/16 20
NI-325	1 1/8	2 1/16	1 1/4	3/4	7/8	3/4 -16

Pivot Pin

Part no.	CD	CL
NCA1-150	1/2	1 7/8
NCA1-325	3/4	2 5/8

Pivot Pin

Part no.	CD ₁	CD ₂	CL	CP
NCDP-150	.500 ⁰ _{-.002}	.106	2.28	1.94
NCDP-325	.750 ⁰ _{-.002}	.140	3.10	2.72

Note) Cotter pins are included.

