



New Addition to the NCM Series: 7/16" & 9/16" Bore Sizes Now Available as Standard



- Stainless Steel Polished Tube
- Stainless Steel Piston Rod
- Anodized Covers
- Wrench Flats on Rod Covers

Specifications

Specifications

Bore size (in)	044 (7/16")	056 (9/16")
Fluid	Air	
Maximum operating pressure	250 PSI/1.7 MPa	
Minimum operating pressure	8 PSI/0.06 MPa	
Ambient and fluid temperature	40 to 140°F/5 to 60 °F	
Piston speed	No bumper: 2 to 20 in/sec (50 to 500 mm/sec) Rubber bumper: 2 to 30 in/sec (50 to 750 mm/sec)	
Rubber bumper	Option	
Lubrication	Not required (Pre-lubricated at Factory)	
Mounting	B, C, E	

Weight

(lbs)

Bore size (inch)	Base weight by mounting type					Add'l weight per inch stroke B, C, E	Add'l weight for magnet	Add'l weight for cushion
	B	C	E	R	W			
044 (7/16")	0.059	0.076	0.076	N/A	N/A	0.019	0.008	0.008
056 (9/16")	0.080	0.091	0.091	N/A	N/A	0.026	0.008	0.008

Standard Stroke

(inch)

Mounting	Standard stroke	Max. stroke as standard	Long stroke X142US
Front nose (B)	1/2, 1, 2, 3, 4, 5, 6	12	40
Double end (E)	1/2, 1, 2, 3, 4, 5, 6	32	40
Rear pivot (C)	1/2, 1, 2, 3, 4, 5, 6	12	

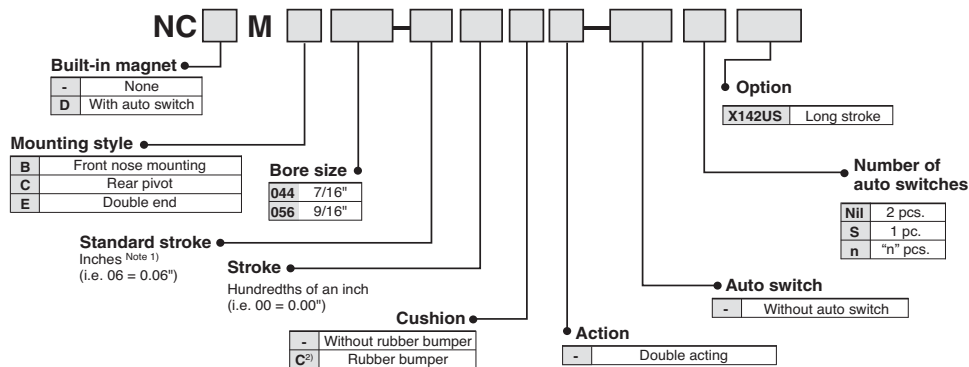
Note) Minimum stroke for mounting auto switches:
0.6 inch for 2 switches, 0.4 inch for one switch.

Theoretical Output

lbf

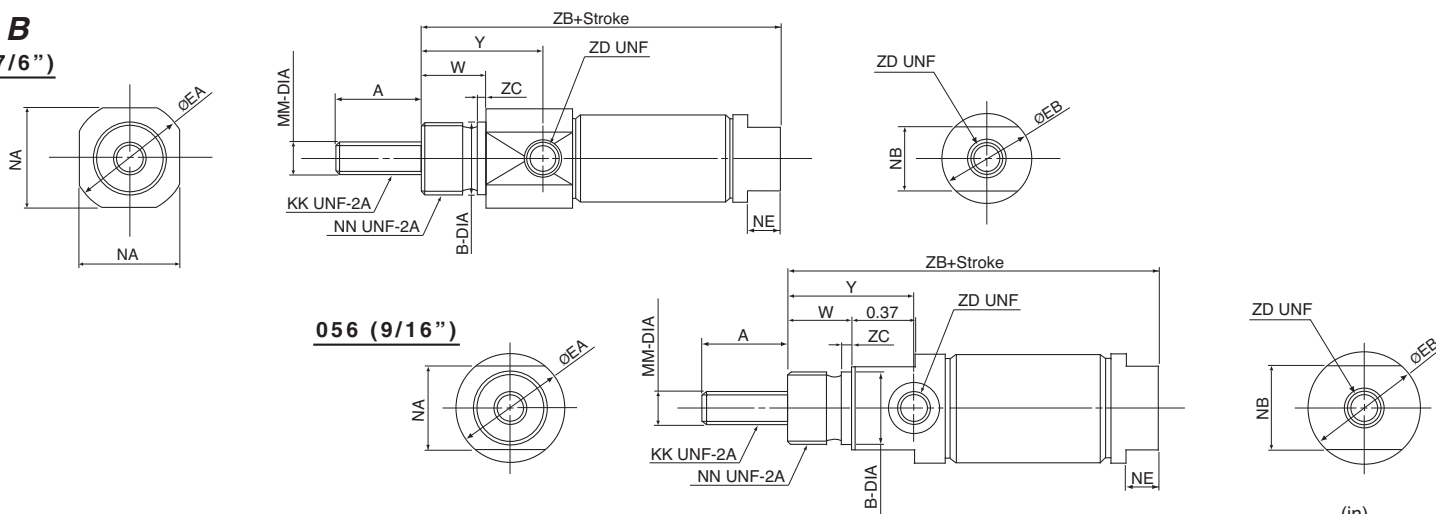
Bore size (inch)	Rod Diameter (inch)	Operating Direction	Effective Area (sq. inch)	Operating pressure (PSI)					
				25	50	75	100	125	150
044 (7/16")	0.197	OUT	0.152	3.8	7.6	11.4	15.2	19.0	22.8
		IN	0.122	3.0	6.1	9.1	12.2	15.2	18.2
056 (9/16")	0.197	OUT	0.246	6.2	12.3	18.5	24.6	30.8	36.9
		IN	0.216	5.4	10.8	16.2	21.6	27.0	32.4

How to Order



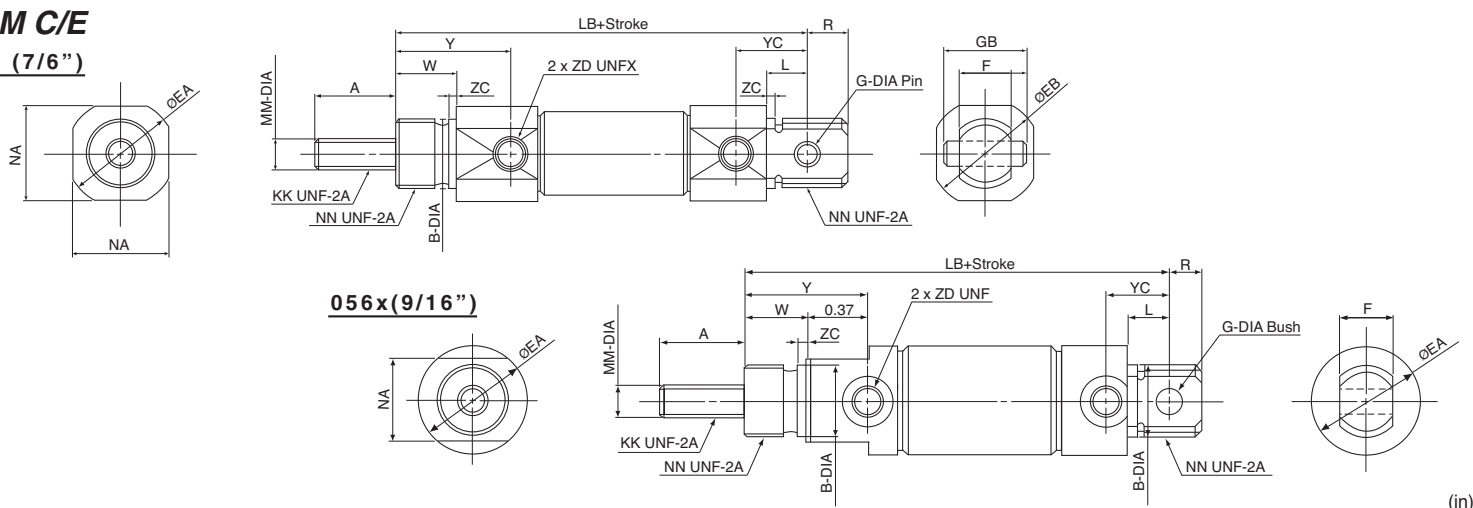
Note 1) See specifications for standard and maximum stroke lengths.
Note 2) Cushion affects cylinder overall length of some models. Refer to dimensional data.

NCM B 044 (7/16")



Bore size (in)	A	B	EA	EB	KK	MM	NA	NB	NE	NN	W	Y	ZC	ZD	ZB	W/Cushion
044 (7/16")	0.50	0.437	0.669	0.520	No. 10-32	0.197	0.59	0.38	0.19	7/16 - 20	0.38	0.72	0.05	No. 10-32	2.11	0.187
056 (9/16")	0.50	0.437	0.654	-	No. 10-32	0.197	0.50	-	0.19	7/16 - 20	0.38	0.72	0.06	No. 10-32	2.19	0.125

NCM C/E 044 (7/16")



Bore size (in)	A	B	EA	EB	F	G	GB	KK	L	MM	NA	NN	R	W	Y	YC	ZC	ZD	LB	W/Cushion
044 (7/16")	0.50	0.437	0.669	0.520	0.31	0.156	0.50	No. 10-32	0.25	0.197	0.59	7/16 - 20	0.25	0.38	0.72	0.44	0.05	No. 10-32	2.56	0.187
056 (9/16")	0.50	0.437	0.654	-	0.31	0.157	-	No. 10-32	0.25	0.197	0.50	7/16 - 20	0.19	0.38	0.72	0.38	0.06	No. 10-32	2.56	0.125



SMC Corporation of America
3011 N. Franklin Road
Indianapolis IN 46226
(800) 762-7621 (SMC.SMC-1)
www.smcusa.com

SMC Pneumatics (Canada) Ltd.
6768 Financial Drive Mississauga
Ontario L5N 7J6 Canada
(905) 812-0400
www.smc Pneumatics.ca

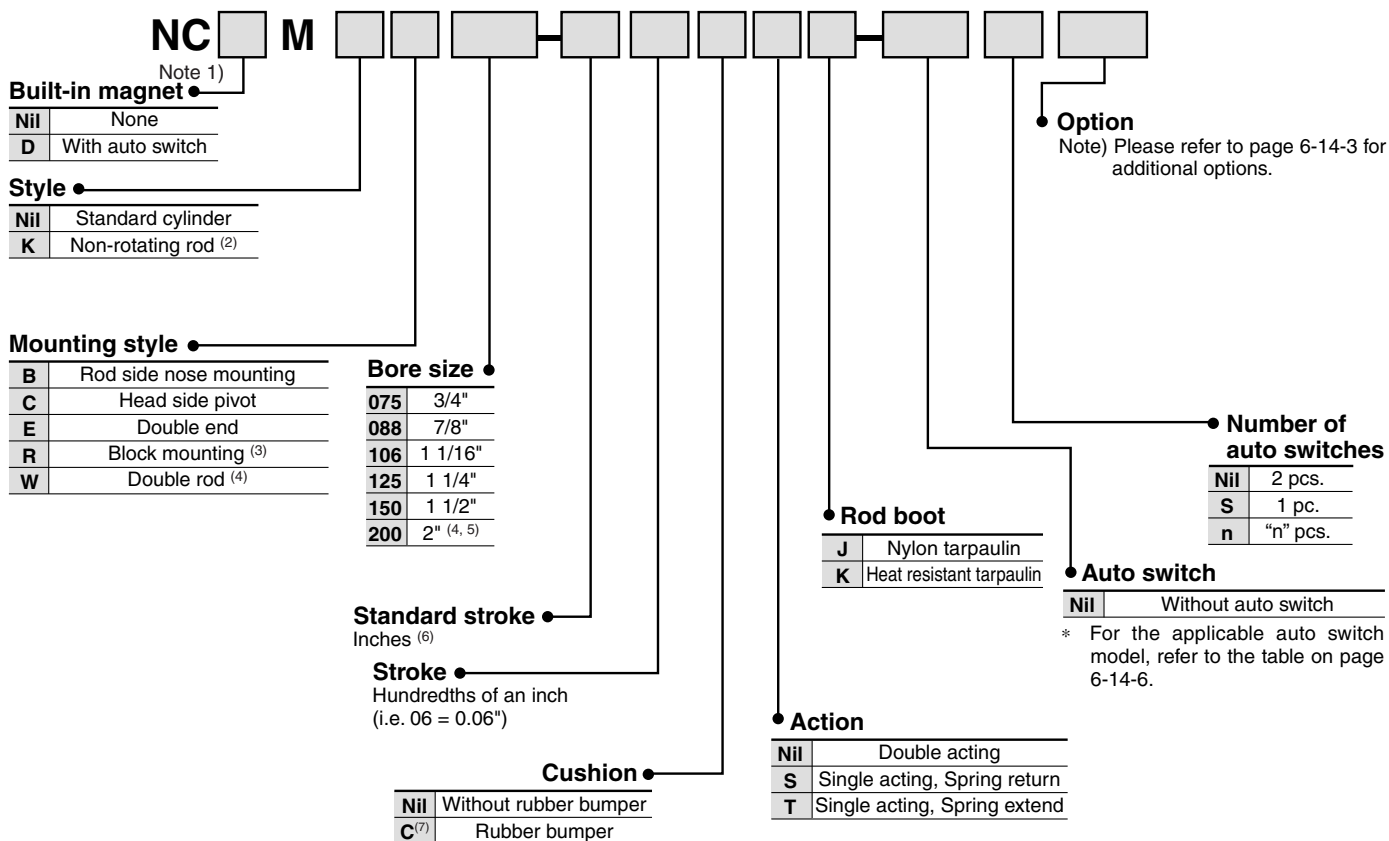
© 2007 SMC Corporation of America. All Rights Reserved.

All reasonable efforts to ensure the accuracy of the information detailed in this catalog were made at the time of publishing. However, SMC can in no way warrant the information herein contained as specifications are subject to change without notice.

Air Cylinder: Standard/Non-rotating Rod Double Acting/Single Acting, Single Rod/Double Rod Series **NCM**

Inch size: $\varnothing 3/4"$, $\varnothing 7/8"$, $\varnothing 1\ 1/16"$, $\varnothing 1\ 1/4"$, $\varnothing 1\ 1/2"$, $\varnothing 2"$

How to Order



Note 1) Not available with block mount (R).

Note 2) Not available with spring extend (T), double rod (W), block mount (R), rod boot, or $\varnothing 2"$.

Note 3) Not offered in $\varnothing 7/8"$, $\varnothing 1\ 1/4"$, or $\varnothing 2"$ or with rod boot.

Note 4) Double acting only.

Note 5) Not available as standard with C, R mount, with rod boot.

Note 6) See specifications for standard and maximum stroke lengths.

Note 7) Rubber cushions are offered at no additional cost on $\varnothing 7/8"$ and $\varnothing 1\ 1/4"$. They are options on the other bore sizes. The "C" after the bore size must be included in either case. Cushion affects cylinder overall length of some models. Refer to dimensional data.

Auto Switch Specifications/Option Compatibility

Applicable Auto Switch/Refer to page 6-16-1 for further information on auto switches.

Type	Special function	Electrical entry	Indicator light	Wiring (Output)	Load voltage		Auto switch model	Lead wire length (m)*				Pre-wire connector	Applicable load		
					DC	AC		0.5 (Nil)	3 (L)	5 (Z)	None (N)				
Reed switch	—	Grommet	Yes	2-wire	24 V	12 V	100 V	C73	●	●	●	—	—	—	Relay, PLC
			No			5 V, 12 V	100 V or less	C80	●	●	—	—	IC circuit		
			Yes			—	—	B53	●	●	●	—			
			No			12 V	100 V, 200 V 200 V or less	B54 B64	●	●	●	—	—		
		Connector	Yes			—	—	C73C	●	●	●	●		—	—
			No			5 V, 12 V	24 V or less	C80C	●	●	●	●	—	IC circuit	
Diagnostic indication (2-color indication)	Grommet	Yes	—	—	B59W	●	●	—	—	—	—	—	—	—	
Solid state switch	—	Grommet	—	—	24 V	5 V, 12 V	—	H7A1	●	●	○	—	○	—	IC circuit
								H7A2	●	●	○	—	○		
	Connector	—	—	—	2-wire	12 V	—	H7B	●	●	○	—	○	—	—
								H7C	●	●	●	●	—		
	Diagnostic indication (2-color indication)	Grommet	Yes	—	—	5 V, 12 V	—	H7NW	●	●	○	—	○	—	IC circuit
								H7PW	●	●	○	—	○		
								H7BW	●	●	○	—	○		
								H7BA	—	●	○	—	○		
	Water resistant (2-color indication)	Grommet	—	—	2-wire	12 V	—	G59	●	●	○	—	○	—	—
								K59	●	●	○	—	○		
With diagnostic output (2-color indication)	Grommet	—	—	—	5 V, 12 V	—	H7NF	●	●	○	—	○	—	IC circuit	
							K59	●	●	○	—	○			
—	Grommet	—	—	—	12 V	—	H7NF	●	●	○	—	○	—	—	
							K59	●	●	○	—	○			

* Lead wire length symbols: 0.5 m Nil (Example) C73C
 3 m L (Example) C73CL
 5 m Z (Example) C73CZ
 None N (Example) C73CN

* Solid state switches marked with "○" are produced upon receipt of order.

• For details about auto switches with pre-wire connector, refer to page 6-16-60.

Option Compatibility

	Description	Note	NCM - Standard	NCDM	NCMW	NCMK	NCM-*J	NCM-*K	S	T	C	XB6	XB7	XB9	XC6
NCM	Standard		—												
NCDM	Auto switch capable		○	—											
NCMW	Double rod		○	○	—										
NCMK	Non-rotating	1	○	○	S	—									
NCM-*J	Nylon rod boot	1	○	○	S	S	—								
NCM-*K	Neoprone rod boot	1	○	○	S	S	N	—							
S	Spring return	1	○	○	S	S	S	S	—						
T	Spring extend	1	○	○	S	S	S	S	N	—					
C	Rubber bumper	2	○	○	○	S	S	O	N	O	—				
XB6	Heat resistant	1	○	S	O	N	S	S	O	N	N	—			
XB7	Cold resistant	1	○	S	O	N	S	S	O	N	N	N	—		
XB9	Low speed	1	○	○	S	N	S	S	N	N	O	N	N	—	
XC6	Stainless steel rod	3, 4	○	○	○	○	○	○	N	O	O	O	O	O	—
B	Rod side nose mounting		○	○	○	○	○	○	○	○	○	○	○	○	○
C	Head side pivot mounting	1	○	○	N	○	○	○	○	○	○	○	○	○	○
E	Double end mounting		○	○	N	○	○	○	○	○	○	○	○	○	○
R	Block mounting	1, 5, 6	○	○	S	S	N	N	O	O	O	S	S	O	O

○ Combination available to order
 S Available with special request
 N Not available

Note 1) This table is not applicable for ø200.
 Note 2) Rubber cushion no additional charge on ø088 and ø125.
 Note 3) Stainless steel rod standard on ø075 and ø088. Use XC6 option to get stainless steel rod nut.
 Note 4) Non-rotating rod is stainless steel. Use XC6 option to get stainless steel rod nut.
 Note 5) Block mount not available in ø088 and ø125.
 Note 6) Block, Auto switch capable, S and T only available as special.

CJ1

CJP

CJ2

CM2

CG1

MB

MB1

CA2

CS1

C76

C85

C95

CP95

NCM

NCA

D-

-X

20-

Data

Series NCM

Specifications: Double Acting, Single Rod/Double Rod

Specifications

Bore size (in)	075 (3/4")	088 (7/8")	106 (1 1/16")	125 (1 1/4")	150 (1 1/2")	200 (2")
Fluid	Air					
Maximum operating pressure	250 PSI/1.7 MPa					
Minimum operating pressure	8 PSI/0.06 MPa					
Ambient and fluid temperature	40 to 140°F/5 to 60 °F					
Piston speed	No bumper: 2 to 20 in/sec (50 to 500 mm/sec) Rubber bumper: 2 to 30 in/sec (50 to 750 mm/sec)					
Rubber bumper	Option (No additional charge on 7/8" and 1 1/4" bore)					
Lubrication	Not required (Pre-lubricated at Factory)					
Mounting	B, C, E, R					

Note) R mount available on ø3/4", ø1 1/16", and ø1 1/2" only.

Standard Stroke

(in)

Mounting	Standard stroke	Max. stroke as standard	Long stroke
Rod side nose (B)	1/2, 1, 2, 3, 4, 5, 6	12	40
Double end (E)	1/2, 1, 2, 3, 4, 5, 6	32	40
Head side pivot (C)	7, 8, 10, 12		
Double rod (W)	1/2, 1, 2, 3, 4, 5, 6	12	20
Block mount (R)	1/2, 1, 1 1/2, 2, 3, 4, 5, 6	12	40

Note) Minimum stroke for mounting auto switches: 0.6 inch for 2 switches, 0.4 inch for one switch.

Specifications: Double Acting, Single Rod, Non-rotating Rod

Specifications

Bore size (in)	075 (3/4")	088 (7/8")	106 (1 1/16")	125 (1 1/4")	150 (1 1/2")
Fluid	Air				
Maximum operating pressure	250 PSI/1.7 MPa				
Minimum operating pressure	8 PSI/0.06 MPa				
Ambient and fluid temperature	40 to 140°F/5 to 60 °F				
Piston speed	2 to 20 in/sec/50 to 500 mm/sec				
Rod material	Stainless steel 304 (JIS)				
Rubber bumper	Option (No additional charge on 7/8" and 1 1/4" bore)				
Non-rotating accuracy	±2.0°		± 1.4°		
Maximum allowable torque	0.04 ft·Lbf (0.06 N·m)	0.09 ft·Lbf (0.13 N·m)	0.12 ft·Lbf (0.16 N·m)		

Standard Stroke

(in)

Mounting	Standard stroke	Max. stroke as standard	Long stroke
Rod side nose (B)	1/2, 1, 2, 3, 4, 5, 6	12	40
Double end (E)	1/2, 1, 2, 3, 4, 5, 6	32	40
Head side pivot (C)	7, 8, 10, 12		

Note 1) Minimum stroke for mounting auto switches: 0.6 inch for 2 switches, 0.4 inch for one switch.

Note 2) Spring return up to 18" available as special request

Series NCM

Specifications: Rod Boot

Rod Boot Material

Symbol	Material	Maximum ambient temperature
J	Nylon tarpaulin	140°F (60°C)
K	Heat resistant tarpaulin	230°F (110°C)*

* Maximum ambient temperature is for the rod boot only.

Maximum Stroke

Bore size (in)	Maximum stroke
3/4, 7/8, 1 1/16	12 STD.—16 Max.
1 1/4, 1 1/2, 2	12 STD.—26 Max.

Parts No. of Auto Switch Mounting Band

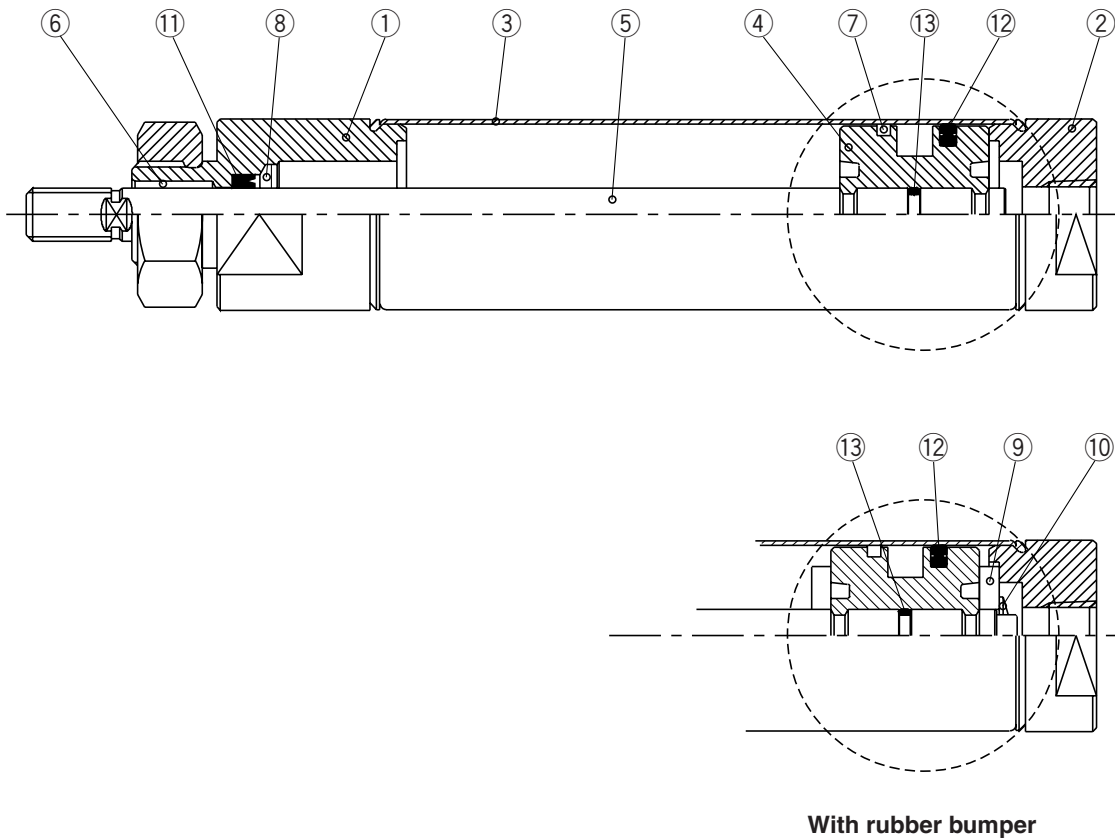
Auto switch part number	Bore size				
	075	088	106	125	150
D-G59, D-B54, D-B64, D-K59, D-B53	NBA-075	NBA-088	NBA-106	NBA-125	NBA-150
D-C73 D-H7A1	NBM2-075	NBM2-088	NBM2-106	NBM2-125	NBM2-150

Minimum Stroke for Auto Switches Mounting (NCDM)

(in)

Auto switch model	Number of switches				1
	2		n		
	On different surfaces	On the same surfaces	On different surfaces	On the same surfaces	
D-C7 D-C8	0.6	2.3	$0.6 + 1.8\left(\frac{n-2}{2}\right)$ (n = 2, 4, 6...)	$2.3 + 1.8(n - 2)$	0.4
D-H7□ D-H7□W D-H7BAL D-H7NF	0.6	2.3			0.4
D-C73C C-C80C D-H7C	0.6	3.1	$0.6 + 2\left(\frac{n-2}{2}\right)$ (n = 2, 4, 6...)	$3.1 + 2(n - 2)$	0.4
D-H7LF	0.8	2.8	$0.8 + 2\left(\frac{n-2}{2}\right)$ (n = 2, 4, 6...)	$2.8 + 2(n - 2)$	0.4
D-B5 D-B6	0.6	2.7	$0.6 + 2\left(\frac{n-2}{2}\right)$ (n = 2, 4, 6...)	$2.7 + 2.2(n - 2)$	0.4
D-B59W	0.8	2.9	$0.8 + 2\left(\frac{n-2}{2}\right)$ (n = 2, 4, 6...)	$2.9 + 2.2(n - 2)$	0.6
D-G59 D-K59	0.6	2.8	$0.6 + 2\left(\frac{n-2}{2}\right)$ (n = 2, 4, 6...)	$2.8 + 2(n - 2)$	0.4

Construction: Double Acting, Single Rod



Component Parts

No.	Description	Material	Note
①	Rod cover	Aluminum alloy	Clear anodized
②	Head cover	Aluminum alloy	Clear anodized
③	Cylinder tube	Stainless steel	Stainless steel 304
④	Piston	Aluminum alloy	Chromated
⑤	Piston rod	3/4", 7/8"	Stainless steel
		1 1/16", 1 1/2", 1 1/4", 2"	Carbon steel
⑥	Bushing	Sintered BR	—
⑦	Wear ring	Phenolic resin	—
⑧	Snap ring	Spring steel	—
⑨	Rubber bumper	Urethane	—
⑩	Snap ring	Spring steel	—
⑪	Rod seal	NBR	—
⑫	Piston seal	NBR	—
⑬	Piston gasket	NBR	—

CJ1

CJP

CJ2

CM2

CG1

MB

MB1

CA2

CS1

C76

C85

C95

CP95

NCM

NCA

D-

-X

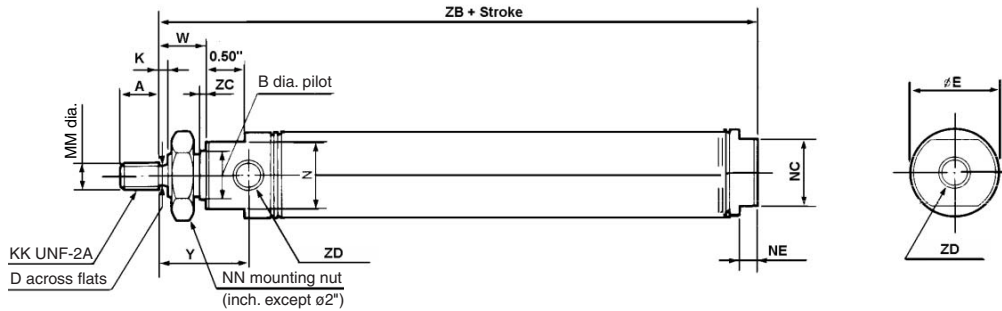
20-

Data

Series NCM

Dimensions: Double Acting, Single Rod

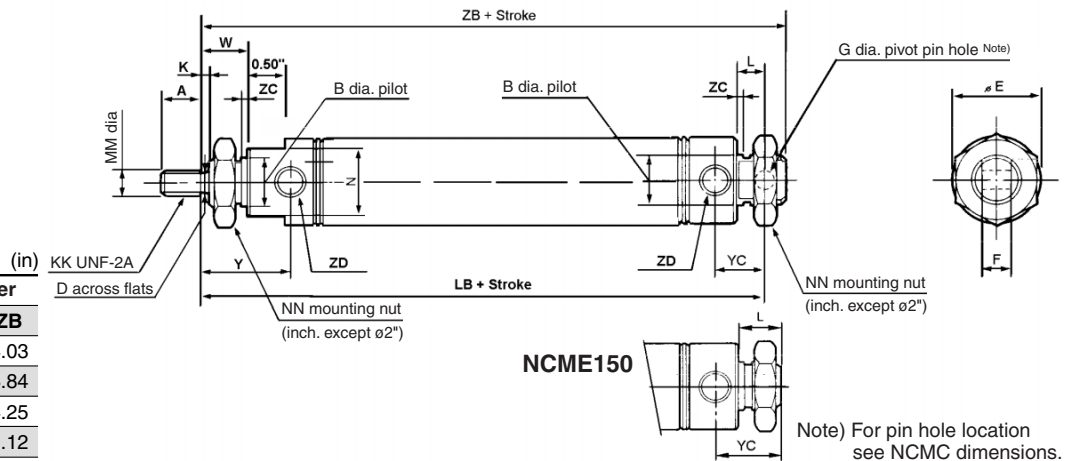
Double acting, single rod
Rod side nose mounting: NC(D)MB



(in)

Bore size (in)	MM	KK	A	B	D	E	K	N	NC	NE	NN	W	Y	ZC	ZD	ZB No bumper	ZB Bumper
075 (3/4")	0.250	1/4-28	0.50	0.624	—	0.86	—	0.75	0.62	0.12	5/8-18	0.50	0.95	0.09	1/8 NPTF	2.97	2.97
088 (7/8")	0.250	1/4-28	0.50	0.624	—	0.93	—	0.75	0.75	0.18	5/8-18	0.50	0.95	0.09	1/8 NPTF	2.69	2.94
106 (1 1/16")	0.312	5/16-24	0.50	0.624	0.25	1.12	0.12	0.88	0.88	0.24	5/8-18	0.62	1.17	0.09	1/8 NPTF	3.25	3.38
125 (1 1/4")	0.437	7/16-20	0.75	0.749	0.38	1.32	0.25	1.06	1.06	0.25	3/4-16	0.88	1.62	0.09	1/8 NPTF	3.75	4.00
150 (1 1/2")	0.437	7/16-20	0.75	0.749	0.38	1.56	0.25	1.25	1.25	0.25	3/4-16	0.88	1.50	0.09	1/8 NPTF	3.69	3.82
200 (2")	0.625	1/2-20	0.88	1.374	0.50	2.06	0.38	1.75	1.75	0.31	1 1/4-12	1.19	1.19	0.12	1/4 NPTF	4.69	4.95

Double acting, single rod
Double end mounting: NC(D)ME



Bore (in)	No bumper		Bumper	
	LB	ZB	LB	ZB
075 (3/4")	3.75	4.03	3.75	4.03
088 (7/8")	3.31	3.59	3.56	3.84
106 (1 1/16")	3.84	4.12	3.97	4.25
125 (1 1/4")	4.47	4.87	4.72	5.12
150 (1 1/2")	—	4.5	—	4.63
200 (2")	5.62	6.06	5.88	6.32

NCME150

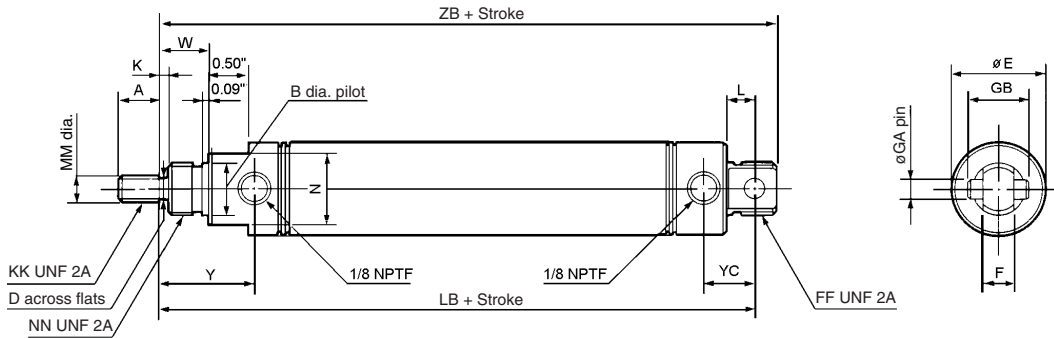
Note) For pin hole location see NCMC dimensions.

(in)

Bore size (in)	MM	KK	A	B	D	E	F	G	K	L	N	NN	W	Y	YC	ZC	ZD
075 (3/4")	0.250	1/4-28	0.50	0.624	—	0.86	0.38	0.251	—	0.34	0.75	5/8-18	0.50	0.95	0.62	0.09	1/8 NPTF
088 (7/8")	0.250	1/4-28	0.50	0.624	—	0.93	0.38	0.251	—	0.34	0.75	5/8-18	0.50	0.95	0.62	0.09	1/8 NPTF
106 (1 1/16")	0.312	5/16-24	0.50	0.624	0.25	1.12	0.38	0.251	0.12	0.34	0.88	5/8-18	0.62	1.17	0.62	0.09	1/8 NPTF
125 (1 1/4")	0.437	7/16-20	0.75	0.749	0.38	1.32	0.50	0.251	0.25	0.41	1.06	3/4-16	0.88	1.62	0.78	0.09	1/8 NPTF
150 (1 1/2")	0.437	7/16-20	0.75	0.749	0.38	1.56	—	—	0.25	0.63	1.25	3/4-16	0.88	1.50	0.91	0.09	1/8 NPTF
200 (2")	0.625	1/2-20	0.88	1.374	0.50	2.06	0.75	0.375	0.38	0.56	1.75	1 1/4-12	1.19	1.91	1.03	0.12	1/4 NPTF

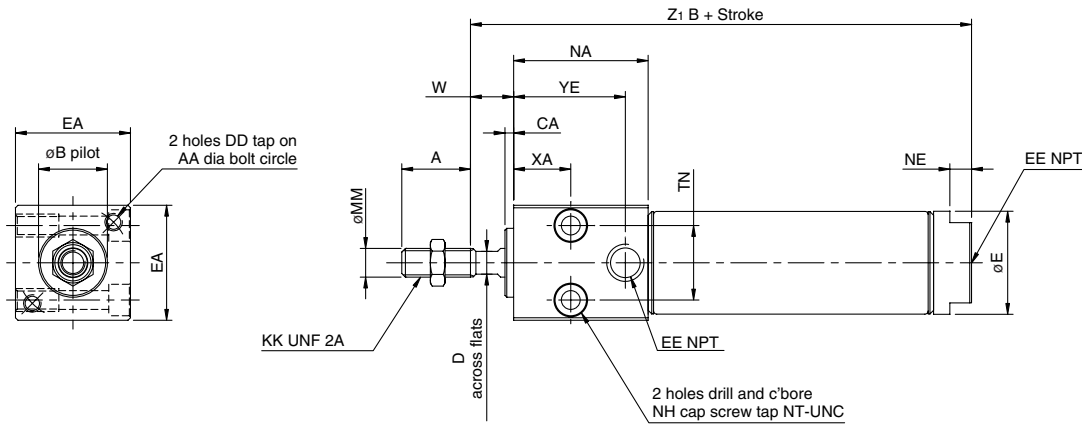
Dimensions: Double Acting, Single Rod

Double acting, single rod Head side pivot mounting: NC(D)MC



Bore size (in)	MM	KK	A	B	D	E	F	FF	GA	GB	K	L	N	NN	W	Y	YC	No bumper		Bumper	
																		LB	ZB	LB	ZB
075 (3/4")	0.250	1/4-28	0.50	0.624	—	0.86	0.38	5/8-18	0.250	0.75	—	0.34	0.75	5/8-18	0.50	0.95	0.62	3.75	4.03	3.75	4.03
088 (7/8")	0.250	1/4-28	0.50	0.624	—	0.93	0.38	5/8-18	0.250	0.75	—	0.34	0.75	5/8-18	0.50	0.95	0.62	3.31	3.59	3.56	3.84
106 (1 1/16")	0.312	5/16-24	0.50	0.624	0.25	1.12	0.38	5/8-18	0.250	0.75	0.12	0.34	0.88	5/8-18	0.62	1.17	0.62	3.84	4.12	3.97	4.25
125 (1 1/4")	0.437	7/16-20	0.75	0.749	0.38	1.32	0.50	5/8-18	0.250	0.75	0.25	0.41	1.06	3/4-16	0.88	1.62	0.78	4.47	4.87	4.72	5.12
150 (1 1/2")	0.437	7/16-20	0.75	0.749	0.38	1.56	0.62	—	0.375	1.00	0.25	0.50	1.25	3/4-16	0.88	1.50	0.78	4.38	4.75	4.51	4.88

Double acting, single rod Block mounting: NC(D)MR



Bore size (in)	MM	KK	A	AA	B	CA	D	DD	E	EA	EE	NA	NE	NH	NT	TN	WF	YE	XA
106 (1 1/16")	0.312	3/16-24	0.75	1.25	0.750	0.093	0.25	10-32 UNF	1.12	1.25	1/8	1.47	0.24	10-32 UNF	1/4-20	0.81	0.47	1.22	0.62
150 (1 1/2")	0.437	7/16-20	1.25	1.75	1.00	0.125	0.38	1/4-20 NUC	1.56	1.75	1/4	1.93	0.25	1/4-20 NUC	5/16-18	1.12	0.38	1.57	0.88

Block Mounting Type

Bore	ZB1		ZB2		ZB3		ZC1		ZC2	
	No bumper	With bumper	No bumper	With bumper	No bumper	With bumper	No bumper	With bumper	No bumper	With bumper
075 (3/4")	3.22	3.22	2.66	2.66	2.35	2.35	1.69	1.69	2.69	2.69
106 (1 1/16")	3.75	3.88	3.38	3.51	2.93	3.06	1.81	1.94	2.81	2.94
150 (1 1/2")	4.19	4.32	3.69	3.82	3.69	3.82	2.00	2.13	3.00	3.13

Note) Length not affected by addition of magnet

CJ1

CJP

CJ2

CM2

CG1

MB

MB1

CA2

CS1

C76

C85

C95

CP95

NCM

NCA

D-

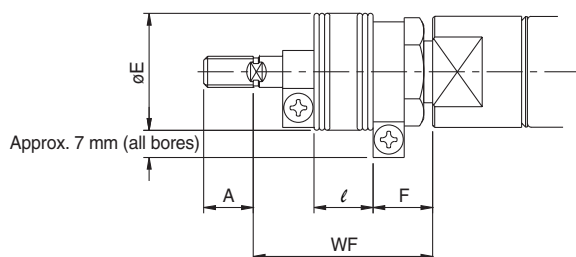
-X

20-

Data

Series NCM

Dimensions: Rod Boot



(in)

Bore size (in)	A	ϕe	f	Wf										
				0 to 2	2.1 to 4	4.1 to 6	6.1 to 8	8.1 to 10	8.1 to 10	12.1 to 14	14.1 to 16	16.1 to 20	20.1 to 24	24.1 to 28
075 (3/4")	0.50	1.18	0.51	1.81	2.31	2.81	3.31	3.81	4.31	4.81	5.31	—	—	—
088 (7/8")	0.50	1.18	0.51	1.81	2.31	2.81	3.31	3.81	4.31	4.81	5.31	—	—	—
106 (1 1/16")	0.50	1.18	0.51	1.81	2.31	2.81	3.31	3.81	4.31	4.81	5.31	—	—	—
125 (1 1/4")	0.75	1.38	0.55	1.94	2.44	2.94	3.44	3.94	4.44	4.94	5.44	6.44	7.44	8.44
150 (1 1/2")	0.75	1.38	0.55	1.94	2.44	2.94	3.44	3.94	4.44	4.94	5.44	6.44	7.44	8.44

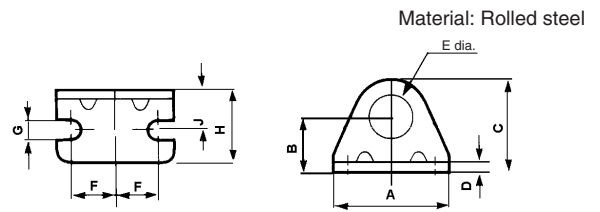
(in)

Bore size (in)	l										
	0 to 2	2.1 to 4	4.1 to 6	6.1 to 8	8.1 to 10	8.1 to 10	12.1 to 14	14.1 to 16	16.1 to 20	20.1 to 24	24.1 to 28
075 (3/4")	0.50	1.00	1.50	2.00	2.50	3.00	3.50	4.00	—	—	—
088 (7/8")	0.50	1.00	1.50	2.00	2.50	3.00	3.50	4.00	—	—	—
106 (1 1/16")	0.50	1.00	1.50	2.00	2.50	3.00	3.50	4.00	—	—	—
125 (1 1/4")	0.50	1.00	1.50	2.00	2.50	3.00	3.50	4.00	5.00	6.00	7.00
150 (1 1/2")	0.50	1.00	1.50	2.00	2.50	3.00	3.50	4.00	5.00	6.00	7.00

Series NCM

Mounting Bracket Accessory

Foot bracket

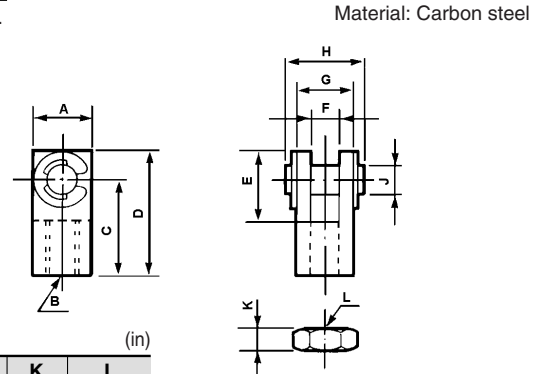


(in)

Part no.	Applicable bore	A	B	C	D	E	F	G	H	J
NCM-L075*	3/4", 7/8", 1 1/16"	1.89	0.81	1.36	0.12	0.63	0.75	0.27	0.98	0.56
NCM-L150	1 1/4", 1 1/2"	2.52	1.00	1.75	0.12	0.75	0.94	0.27	1.50	0.75
NCMK-L150	1 1/4", 1 1/2"	2.52	1.00	1.75	0.12	0.88	0.94	0.27	1.50	0.75
NCM-L200	2"	3.126	1.5	2.5	0.25	1.38	1.13	0.34	1.63	1.00

Note) NCM-L075 will not fit NCM*075*S (Single Acting). For this option use: NCM075-19-51046.
(F dimension=0.51")

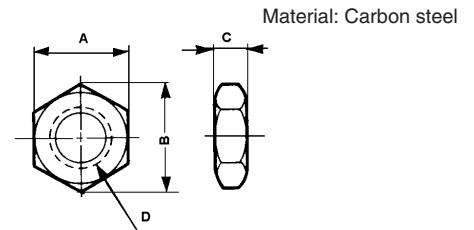
Rod clevis



(in)

Part no.	Applicable bore	A	B	C	D	E	F	G	H	J	K	L
NY-075	3/4", 7/8"	0.51	1/4-28	0.94	1.18	0.69	0.25	0.51	0.71	0.25	0.16	1/4-28
NY-106	1 1/16"	0.51	5/16-24	0.94	1.18	0.69	0.25	0.51	0.71	0.25	0.19	5/16-24
NY-125	1 1/4", 1 1/2"	0.75	7/16-20	1.31	1.69	0.94	0.38	0.75	1.02	0.38	0.25	7/16-20
NY-G050	2"	0.75	1/2-20	1.32	1.69	0.94	0.38	0.75	1.02	0.38	0.31	1/2-20

Jam nut (Rod thread)



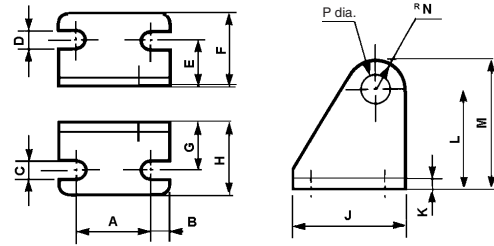
(in)

Part no.	Applicable bore	A	B	C	D
JM-025	3/4", 7/8"	0.44	0.51	0.16	1/4-28 UNF
JM-03	1 1/16"	0.50	0.50	0.19	5/16-24 UNF
JM-045	1 1/4", 1 1/2"	0.69	0.79	0.26	7/16-20 UNF
JM-04	1 1/4", 1 1/2" (Non-rotating)	0.56	0.65	0.23	3/8-24 UNF
JM-05	2"	0.75	0.87	0.32	1/2-20 UNF

Mounting Bracket Accessory

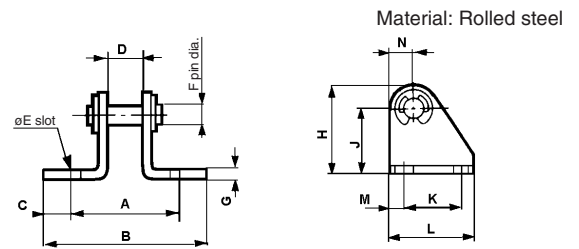
Material: Rolled steel

Pivot bracket (Head side pivot): NCMC



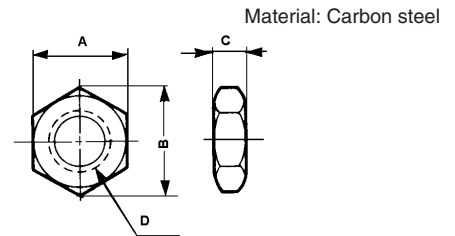
Part no.	Applicable bore	A	B	C	D	E	F	G	H	J	K	L	M	N	ϕP
NCM-PC075	3/4", 7/8", 1 1/16", 1 1/4"	0.75	0.18	0.27	0.27	0.44	0.79	0.44	0.79	1.101	0.12	0.88	1.18	0.31	0.255
NCM-PC150	1 1/2"	1	0.25	0.27	0.27	0.62	0.98	0.62	0.98	0.50	0.12	1.38	1.75	0.38	0.38

Pivot bracket (End mount): NCME



Part no.	Applicable bore	A	B	C	D	ϕE slot	F	G	H	J	K	L	M	N
NCM-PE075	3/4", 7/8", 1 1/16"	1.25	1.95	0.35	0.38	0.27	0.25	0.12	1.18	0.88	0.75	1.10	0.18	0.31
NCM-PE125	1 1/4", 1 1/2"	1.38	2.08	0.35	0.50	0.27	0.25	0.12	1.18	0.88	0.75	1.10	0.18	0.31
NCG-PC050	2"	2.12	3.00	0.44	0.75	0.27	0.38	0.24	1.75	1.38	1.00	1.50	0.25	0.37

Mounting nut (Nose mount thread)



Part no.	Applicable bore	A	B	C	D
JM-08	3/4", 7/8", 1 1/16"	0.94	1.08	0.38	5/8-18 UNF
JM-10	1 1/4", 1 1/2"	1.12	1.30	0.42	3/4-16 UNF
JM-14	2"	1.61	1.86	0.43	1 1/4 -12 UNF

CJ1

CJP

CJ2

CM2

CG1

MB

MB1

CA2

CS1

C76

C85

C95

CP95

NCM

NCA

D-

-X

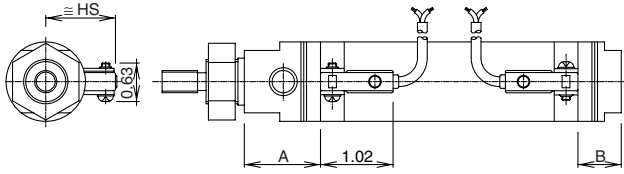
20-

Data

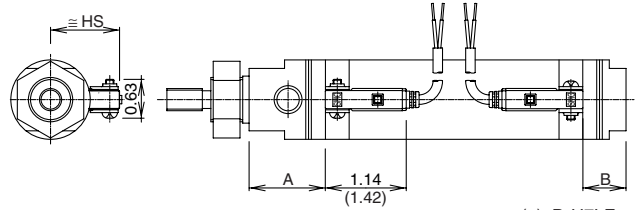
Series NCM

Double Acting/Single Rod/Band Mounting Auto Switch Mounting Position and Mounting Height

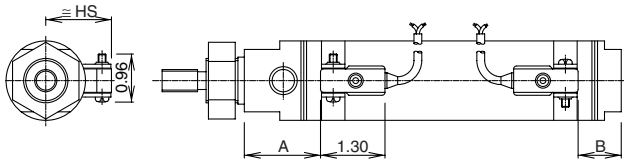
D-C7/C8



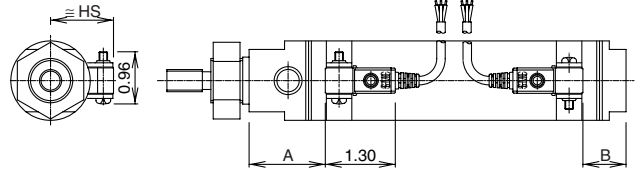
D-H7□/H7□W/H7□F/H7BAL□



D-B5/B6/B59W

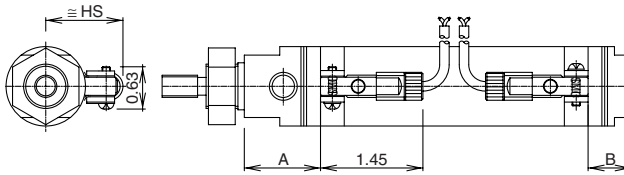


D-G59/K59

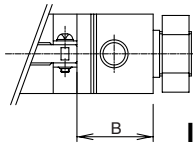
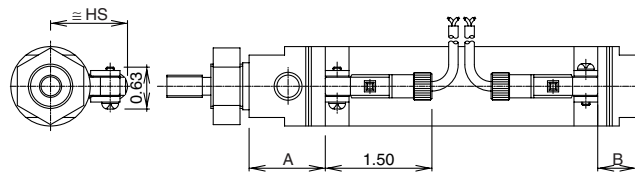


* () : D-H7LF

D-C73C/C80C



D-H7C



In case of NCDMC, NCDME

Auto Switch Mounting Position (NCDMB) (in)

Auto switch model	D-B5 D-B6		D-C7□ D-C80 D-C73C D-C80C		D-B59W		D-H7□ D-H7C D-H7□W D-H7BAL D-H7NF		D-H7LF		D-G59 D-K59	
	A	B	A	B	A	B	A	B	A	B	A	B
075 (3/4")	0.88	0.37	1.12	0.60	1.00	0.48	1.08	0.56	1.02	0.50	0.94	0.42
088 (7/8")	0.72	0.25	0.96	0.49	0.84	0.37	0.92	0.45	0.86	0.39	0.78	0.31
106 (1 1/16")	0.94	0.46	1.18	0.70	1.06	0.58	1.14	0.66	1.08	0.60	1.00	0.52
125 (1 1/4")	1.17	0.46	1.41	0.69	1.29	0.57	1.37	0.65	1.31	0.59	1.23	0.51
150 (1 1/2")	1.07	0.50	1.31	0.74	1.19	0.61	1.27	0.70	1.21	0.64	1.13	0.56
200 (2")	1.52	0.77	1.75	1.01	1.63	0.88	1.72	0.97	1.66	0.91	1.58	0.83

Auto Switch Mounting Position (NCDMC, NCDME) (in)

Auto switch model	D-B5 D-B6		D-C7□ D-C80 D-C73C D-C80C		D-B59W		D-H7□ D-H7C D-H7□W D-H7BAL D-H7NF		D-H7LF		D-G59 D-K59	
	A	B	A	B	A	B	A	B	A	B	A	B
075 (3/4")	0.88	0.80	1.12	1.03	1.00	0.91	1.08	1.00	1.02	0.94	0.94	0.86
088 (7/8")	0.72	0.53	0.96	0.76	0.84	0.64	0.92	0.72	0.86	0.66	0.78	0.59
106 (1 1/16")	0.94	0.70	1.18	0.94	1.06	0.81	1.14	0.90	1.08	0.84	1.00	0.76
125 (1 1/4")	1.17	0.79	1.41	1.02	1.29	0.90	1.37	0.98	1.31	0.92	1.23	0.85
150 (1 1/2")	1.07	0.70	1.31	0.93	1.19	0.81	1.27	0.89	1.21	0.83	1.13	0.75
200 (2")	1.52	1.14	1.75	1.38	1.63	1.25	1.72	1.34	1.66	1.28	1.58	1.20

Auto Switch Mounting Position (NCDMB-*C) (in)

Auto switch model	D-B5 D-B6		D-C7□ D-C80 D-C73C D-C80C		D-B59W		D-H7□ D-H7C D-H7□W D-H7BAL D-H7NF		D-H7LF		D-G59 D-K59	
	A	B	A	B	A	B	A	B	A	B	A	B
075 (3/4")	0.92	0.35	1.16	0.58	1.03	0.46	1.12	0.54	1.06	0.48	0.98	0.40
088 (7/8")	0.85	0.38	1.09	0.62	0.97	0.50	1.05	0.58	0.99	0.52	0.91	0.44
106 (1 1/16")	1.07	0.59	1.31	0.83	1.19	0.71	1.27	0.79	1.21	0.73	1.13	0.65
125 (1 1/4")	1.30	0.59	1.54	0.82	1.42	0.70	1.50	0.78	1.44	0.72	1.36	0.64
150 (1 1/2")	1.20	0.63	1.44	0.87	1.32	0.74	1.40	0.83	1.34	0.77	1.26	0.69
200 (2")	1.65	0.90	1.88	1.14	1.76	1.01	1.85	1.10	1.79	1.04	1.71	0.96

Auto Switch Mounting Position (NCDMC-*C, NCDME-*C) (in)

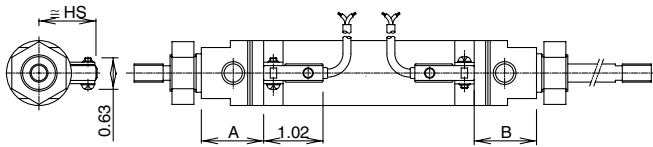
Auto switch model	D-B5 D-B6		D-C7□ D-C80 D-C73C D-C80C		D-B59W		D-H7□ D-H7C D-H7□W D-H7BAL D-H7NF		D-H7LF		D-G59 D-K59	
	A	B	A	B	A	B	A	B	A	B	A	B
075 (3/4")	0.92	0.78	1.16	1.01	1.03	0.89	1.12	0.98	1.06	0.92	0.98	0.84
088 (7/8")	0.85	0.66	1.09	0.89	0.97	0.77	1.05	0.85	0.99	0.79	0.91	0.72
106 (1 1/16")	1.07	0.83	1.31	1.07	1.19	0.94	1.27	1.03	1.21	0.97	1.13	0.89
125 (1 1/4")	1.30	0.92	1.54	1.15	1.42	1.03	1.50	1.11	1.44	1.05	1.36	0.98
150 (1 1/2")	1.20	0.83	1.44	1.06	1.32	0.94	1.40	1.02	1.34	0.96	1.26	0.88
200 (2")	1.65	1.27	1.88	1.51	1.76	1.38	1.85	1.47	1.79	1.41	1.71	1.33

Mounting Height (NCDM) (in)

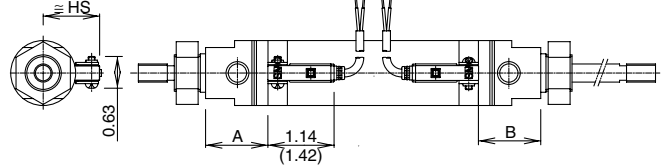
Auto switch model	D-B5 D-B6 D-B59W D-H7C D-G59 D-K59		D-C7□ D-C80 D-H7□ D-H7□W D-H7BAL D-H7□F		C-C73C D-C80C	
	≅ HS		≅ HS		≅ HS	
075 (3/4")	0.98		0.87		0.96	
088 (7/8")	1.04		0.93		1.02	
106 (1 1/16")	1.14		0.98		1.12	
125 (1 1/4")	1.24		1.08		1.22	
150 (1 1/2")	1.36		1.20		1.34	
200 (2")	1.61		1.46		1.59	

Double Acting/Single Rod/Band Mounting Auto Switch Mounting Position and Mounting Height

D-C7/C8

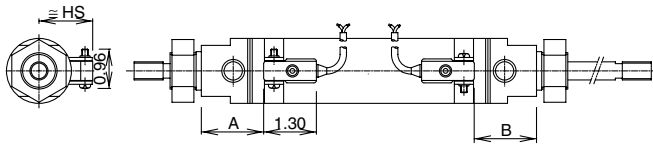


D-H7□/H7□W/H7□F/H7BAL□

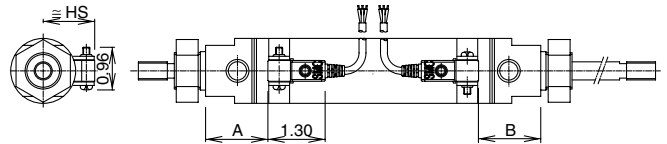


* () : D-H7LF

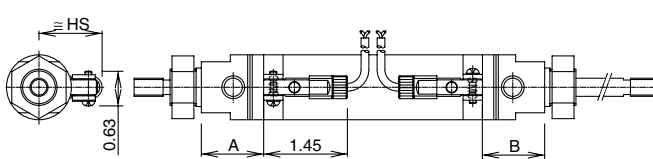
D-B5/B6/B59W



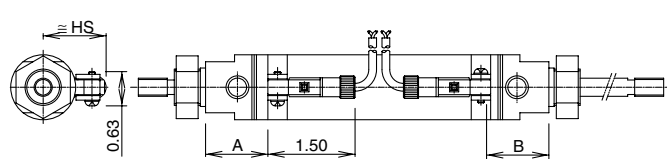
D-G59/K59



D-C73C/C80C



D-H7C



Auto Switch Mounting Position (NCDMW) (in)

Auto switch model	D-B5 D-B6		D-C7□ D-C80 D-C73C D-C80C		D-B59W		D-H7□ D-H7C D-H7□W D-H7BAL D-H7NF		D-H7LF		D-G59 D-K59	
	A	B	A	B	A	B	A	B	A	B	A	B
075 (3/4")	0.88	0.89	1.12	1.13	1.00	1.00	1.08	1.09	1.02	1.03	0.94	0.95
088 (7/8")	0.72	0.72	0.96	0.95	0.84	0.83	0.92	0.91	0.86	0.85	0.78	0.77
106 (1 1/16")	0.94	0.95	1.18	1.18	1.06	1.06	1.14	1.14	1.08	1.09	1.00	1.01
125 (1 1/4")	1.17	1.14	1.41	1.38	1.29	1.26	1.37	1.34	1.31	1.28	1.23	1.20
150 (1 1/2")	1.07	1.07	1.31	1.31	1.19	1.18	1.27	1.27	1.21	1.21	1.13	1.13
200 (2")	1.52	1.45	1.75	1.69	1.63	1.57	1.72	1.65	1.66	1.59	1.58	1.51

Auto Switch Mounting Position (NCDMW-*C) (in)

Auto switch model	D-B5 D-B6		D-C7□ D-C80 D-C73C D-C80C		D-B59W		D-H7□ D-H7C D-H7□W D-H7BAL D-H7NF		D-H7LF		D-G59 D-K59	
	A	B	A	B	A	B	A	B	A	B	A	B
075 (3/4")	0.92	0.87	1.16	1.11	1.03	0.98	1.12	1.07	1.06	1.01	0.98	0.93
088 (7/8")	0.85	0.85	1.09	1.08	0.97	0.96	1.05	1.04	0.99	0.98	0.91	0.90
106 (1 1/16")	1.07	1.08	1.31	1.31	1.19	1.19	1.27	1.27	1.21	1.22	1.13	1.14
125 (1 1/4")	1.30	1.27	1.54	1.51	1.42	1.39	1.50	1.47	1.44	1.41	1.36	1.33
150 (1 1/2")	1.20	1.20	1.44	1.44	1.32	1.31	1.40	1.40	1.34	1.34	1.26	1.26
200 (2")	1.65	1.58	1.88	1.82	1.76	1.70	1.85	1.78	1.79	1.72	1.71	1.64

Mounting Height (NCDM) (in)

Auto switch model	D-B5 D-B6 D-B59W D-H7C D-G59 D-K59		D-C7□ D-C80 D-H7□ D-H7□W D-H7BAL D-H7□F		C-C73C D-C80C	
	≅ HS		≅ HS		≅ HS	
075 (3/4")	0.98		0.87		0.96	
088 (7/8")	1.04		0.93		1.02	
106 (1 1/16")	1.14		0.98		1.12	
125 (1 1/4")	1.24		1.08		1.22	
150 (1 1/2")	1.36		1.20		1.34	
200 (2")	1.61		1.46		1.59	

CJ1

CJP

CJ2

CM2

CG1

MB

MB1

CA2

CS1

C76

C85

C95

CP95

NCM

NCA

D-

-X

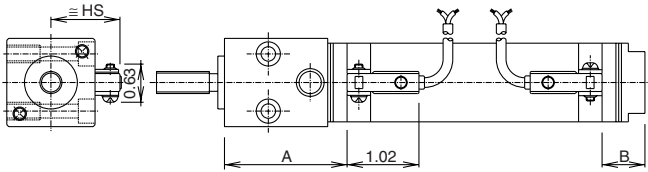
20-

Data

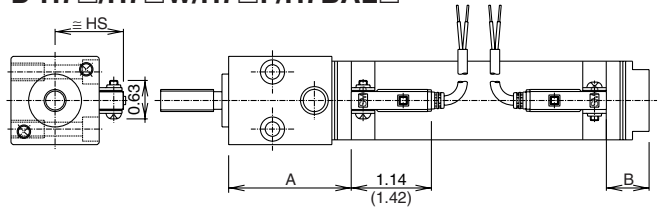
Series NCM

Double Acting/Single Rod/Band Mounting Auto Switch Mounting Position and Mounting Height

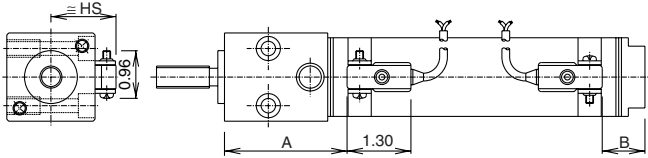
D-C7/C8



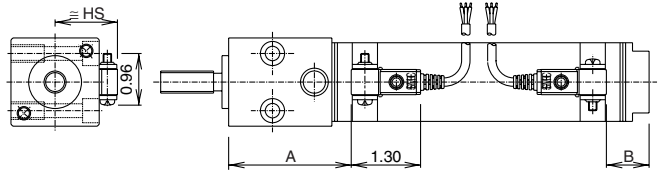
D-H7□/H7□W/H7□F/H7BAL□



D-B5/B6/B59W

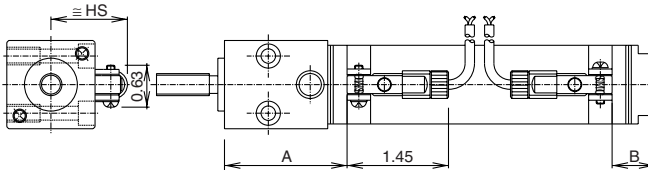


D-G59/K59

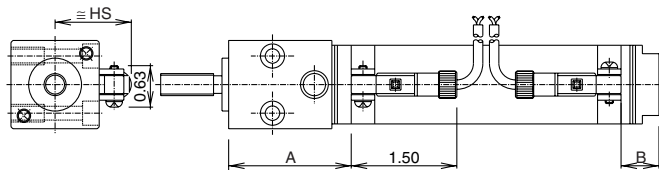


* (): D-H7LF

D-C73C/C80C



D-H7C



Auto Switch Mounting Position (NCDMR) (in)

Auto switch model	D-B5 D-B6		D-C7□ D-C80 D-C73C D-C80C		D-B59W		D-H7□ D-H7C D-H7□W D-H7BAL D-H7NF		D-H7LF		D-G59 D-K59	
	A	B	A	B	A	B	A	B	A	B	A	B
075 (3/4")	1.30	0.37	1.54	0.60	1.42	0.48	1.50	0.56	1.44	0.50	1.36	0.42
106 (1 1/16")	1.61	0.46	1.85	0.70	1.72	0.58	1.81	0.66	1.75	0.60	1.67	0.52
150 (1 1/2")	2.10	0.50	2.33	0.74	2.21	0.61	2.29	0.70	2.24	0.64	2.16	0.56

Auto Switch Mounting Position (NCDMR-*C) (in)

Auto switch model	D-B5 D-B6		D-C7□ D-C80 D-C73C D-C80C		D-B59W		D-H7□ D-H7C D-H7□W D-H7BAL D-H7NF		D-H7LF		D-G59 D-K59	
	A	B	A	B	A	B	A	B	A	B	A	B
075 (3/4")	1.30	0.37	1.54	0.60	1.42	0.48	1.50	0.56	1.44	0.50	1.36	0.42
106 (1 1/16")	1.61	0.46	1.85	0.70	1.72	0.58	1.81	0.66	1.75	0.60	1.67	0.52
150 (1 1/2")	2.10	0.50	2.33	0.74	2.21	0.61	2.29	0.70	2.24	0.64	2.16	0.56

Mounting Height (NCDM) (in)

Auto switch model	D-B5 D-B6 D-B59W D-H7C D-G59 D-K59		D-C7□ D-C80 D-H7□ D-H7□W D-H7BAL D-H7□F		C-C73C D-C80C	
	≅ HS		≅ HS		≅ HS	
075 (3/4")	0.98		0.87		0.96	
088 (7/8")	1.04		0.93		1.02	
106 (1 1/16")	1.14		0.98		1.12	
125 (1 1/4")	1.24		1.08		1.22	
150 (1 1/2")	1.36		1.20		1.34	
200 (2")	1.61		1.46		1.59	