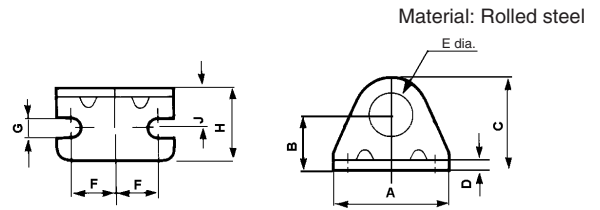


Series NCM

Mounting Bracket Accessory

Foot bracket

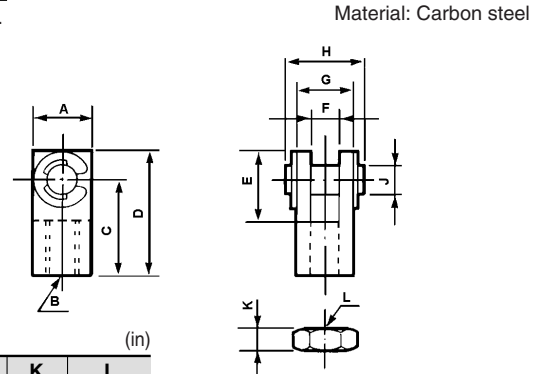


(in)

Part no.	Applicable bore	A	B	C	D	E	F	G	H	J
NCM-L075*	3/4", 7/8", 1 1/16"	1.89	0.81	1.36	0.12	0.63	0.75	0.27	0.98	0.56
NCM-L150	1 1/4", 1 1/2"	2.52	1.00	1.75	0.12	0.75	0.94	0.27	1.50	0.75
NCMK-L150	1 1/4", 1 1/2"	2.52	1.00	1.75	0.12	0.88	0.94	0.27	1.50	0.75
NCM-L200	2"	3.126	1.5	2.5	0.25	1.38	1.13	0.34	1.63	1.00

Note) NCM-L075 will not fit NCM*075*S (Single Acting). For this option use: NCM075-19-51046.
(F dimension=0.51")

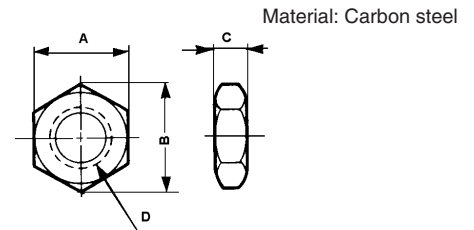
Rod clevis



(in)

Part no.	Applicable bore	A	B	C	D	E	F	G	H	J	K	L
NY-075	3/4", 7/8"	0.51	1/4-28	0.94	1.18	0.69	0.25	0.51	0.71	0.25	0.16	1/4-28
NY-106	1 1/16"	0.51	5/16-24	0.94	1.18	0.69	0.25	0.51	0.71	0.25	0.19	5/16-24
NY-125	1 1/4", 1 1/2"	0.75	7/16-20	1.31	1.69	0.94	0.38	0.75	1.02	0.38	0.25	7/16-20
NY-G050	2"	0.75	1/2-20	1.32	1.69	0.94	0.38	0.75	1.02	0.38	0.31	1/2-20

Jam nut (Rod thread)



(in)

Part no.	Applicable bore	A	B	C	D
JM-025	3/4", 7/8"	0.44	0.51	0.16	1/4-28 UNF
JM-03	1 1/16"	0.50	0.50	0.19	5/16-24 UNF
JM-045	1 1/4", 1 1/2"	0.69	0.79	0.26	7/16-20 UNF
JM-04	1 1/4", 1 1/2" (Non-rotating)	0.56	0.65	0.23	3/8-24 UNF
JM-05	2"	0.75	0.87	0.32	1/2-20 UNF