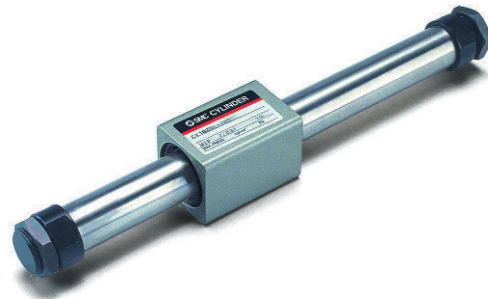


## SERIES NCY2 RODLESS CYLINDER

- ✓ Bore sizes: 6, 10, 15, 25, 32, 40mm
- ✓ Mounting Space reduced by half
- ✓ Basic or Guided Designs
- ✓ High Load Capability
- ✓ Long Stroke Availability
- ✓ No leakage, long life
- ✓ Shock Absorbers (Optional) in Guided Slider Type



**TECHNICAL SPECIFICATIONS**  
BASIC TYPE NCY2B

**MADE IN CANADA**

**MADE IN USA**

Media	Air
Test Pressure	1MPa / 152 PSI
Max Operating Pressure	ø6 & 10: 0.6MPa / 85 PSI ; ø15-40: 0.7MPa / 101PSI
Min Operating Pressure	0.18MPa / 26 PSI
Ambient & Fluid Temperature	-10 ~ 60°C / 14 ~ 140°F
Piston Speed	50~400mm/s / 2 ~ 16 in/sec
Cushion	Rubber Cushion at both ends
Lubrication	Not Required
Stroke Tolerance (mm)	0 ~ 9.9st: $^{+0.394}$ , 10 ~ 39.4st: $^{+0.55}$ , 39.5st ~ : $^{+0.7}$
Mounting Nut	Standardized for Basic Type only (2 pieces)

**RETAINING FORCE (LBF)**

1 Kg = 2.2 lbs  
1N = 0.101972kgf

Magnetic Holding Power	ø6	ø10	ø15	ø25	ø32	ø40
H Type	4.85	13.33	33.95	89.70	145.50	227.94

**HOW TO ORDER**  
NCY2B RODLESS CYLINDER

**NCY2 B** ○ ○ — ○ ○ — ○

**TYPE**  
B .....Basic

**BORE (MM)**  
6 .....1/4"  
10 .....3/8"  
15 .....5/8"  
25 .....1"  
32 .....1 1/4"  
40 .....1 1/2"

**MAGNETIC HOLDING POWER**  
H .....Heavy Duty

**OPTIONS**  
X116 ....Air Hydro  
XB13 ....Low Speed

**STROKE 1/100TH OF AN INCH**

**STROKE (INCH)**

**WEIGHT LIMITATIONS OF MOUNTING FITTINGS**

Model	Maximum Weight (N)
NCY2B6H	2
NCY2B10H	4
NCY2B15•	10
NCY2B25•	12
NCY2B32•	15
NCY2B40•	20

If the weight of your mounting fittings exceed the above limits, please contact your local SMC Sales Office.

The NCY2 series does not allow direct mounting of the load. The load must be guided by other means. The mounting fittings for the load should be designed to meet the weight limits shown in this table.

**ACCESSORIES**  
NCY2 RODLESS CYLINDER

**Note:** Avoid using an intermediate stop to prevent the Magnetic Piston from de-coupling

Bore Size	Standard Stroke (inch)	Maximum Stroke (inch)
ø6	2, 3, 4, 5, 6, 8, 10	12
ø10	2, 3, 4, 5, 6, 8, 10	20
ø15	5, 10, 15, 20, 25, 30	40
ø25	5, 10, 15, 20, 25, 30, 40	80
ø32	5, 10, 15, 20, 25, 30, 40	80
ø40	5, 10, 15, 20, 25, 30, 40	80

**SEAL KITS**  
ø6 ....CY2B6-PS  
ø10 ....CY2B10-PS  
ø15 ....CY2B15-PS  
ø25 ....CY2B25-PS  
ø32 ....CY2B32-PS  
ø40 ....CY2B40-PS

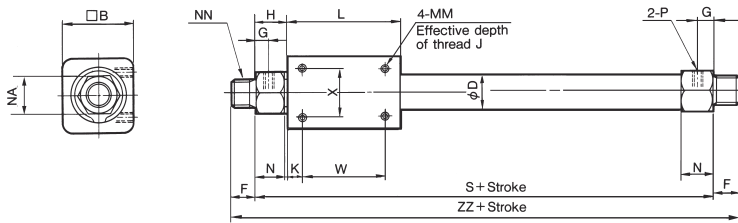
**NON-GUIDED MOUNTING NUT**  
NSNJ-015 (ø6/10/15)  
NSN-03 (ø25/32)  
NSN-04 (ø40)

SEE INSIDE FRONT COVER FOR  
DETAILS OF YOUR LOCAL SALES OFFICE



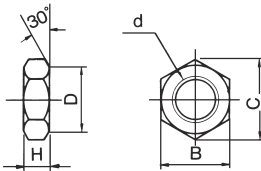
FOR FURTHER TECHNICAL  
DETAILS ON THIS  
PRODUCT, REQUEST  
CATALOG REFERENCE  
N330

DIMENSIONS  
 NCY2B6•10•15



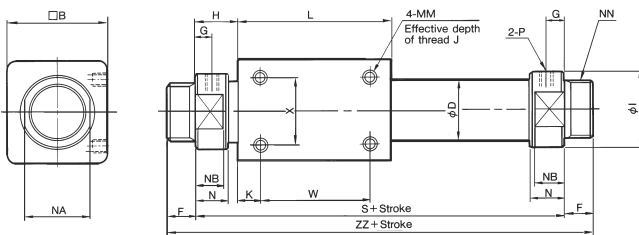
Model	Stroke Range	øD	□B	F	G	H	K	L	N	NA	MM	J	NN	P	S	W	X	ZZ
NCY2B6	~12 inch	0.30	0.67	0.37	0.20	0.56	0.19	1.38	0.41	0.55	No 5-40UNC	0.16	3/8-24 UNF	No 10-32 UNF	2.50	1.00	0.39	3.24
NCY2B10	~20 inch	0.47	0.98	0.37	0.20	0.50	0.19	1.50	0.44	0.55	No 5-40UNC	0.18	3/8-24 UNF	No 10-32 UNF	2.50	1.13	0.63	3.24
NCY2B15	~40 inch	0.67	1.38	0.37	0.22	0.50	0.37	2.24	0.43	0.67	No 8-32 UNC	0.24	3/8-24 UNF	No 10-32 UNF	3.25	1.50	0.75	3.99

DIMENSIONS  
 MOUNTING NUT



Part No	Applicable Bore Size	d	B	C	D	H
NSNJ-015	ø6, ø10, ø15	3/8-24 UNF	0.55	0.64	0.55	0.12
NSN-03	ø25, ø32	1-12 UNF	1.26	1.57	1.22	0.31
NSN-04	ø40	1 1/4-12 UNF	1.61	1.86	1.54	0.43

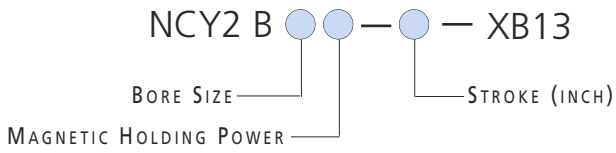
DIMENSIONS  
 NCY2B25•32•40



Model	Stroke Range	øD	□B	F	G	H	øI	K	L	N	NA	NB	MM	J	NN	P	S	W	X	ZZ
NCY2B25	~80 inch	1.09	1.81	0.50	0.31	0.81	1.34	0.38	2.76	0.59	1.18	0.51	No 10-32UNC	0.31	1-12 UNF	NPT 1/8	4.38	2.00	1.25	5.38
NCY2B32	~80 inch	1.38	2.36	0.63	0.35	0.87	1.58	0.51	3.15	0.67	1.42	0.59	1/4-28 UNC	0.31	1-12 UNF	NPT 1/8	4.88	2.13	1.63	6.14
NCY2B40	~80 inch	1.69	2.76	0.63	0.43	1.13	1.97	0.56	3.62	0.81	1.81	0.75	1/4-28 UNC	0.39	1 1/4-12 UNF	NPT 1/4	5.88	2.50	1.63	7.14

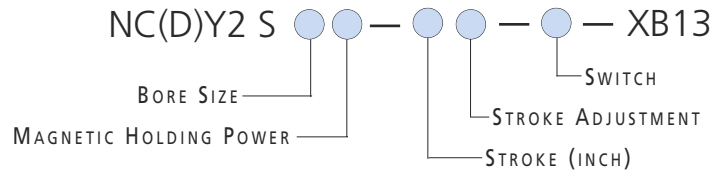
**HOW TO ORDER**  
**SERIES NCY2**

BASIC TYPE - LOW SPEED RODLESS CYLINDER - OPTION



**HOW TO ORDER**  
**SERIES NCY2**

SLIDER TYPE - LOW SPEED RODLESS CYLINDER - OPTION



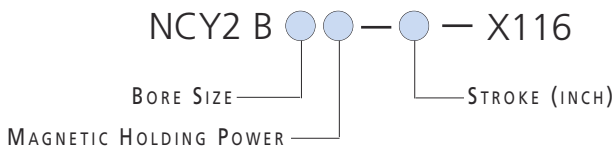
**TECHNICAL SPECIFICATIONS**

BASIC TYPE - XB13 OPTION SERIES NCY2

Type	Basic Type / Slider Type
Bore Size (mm)	ø6 ~ ø40
Fluid	Air
Piston Speed	7 ~ 50mm/s

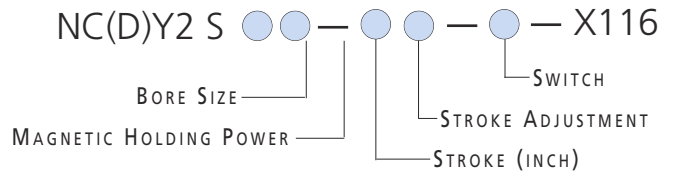
**HOW TO ORDER**  
**SERIES NCY2**

BASIC TYPE - AIR HYDRO RODLESS CYLINDER - OPTION



**HOW TO ORDER**  
**SERIES NCY2**

SLIDER TYPE - AIR HYDRO RODLESS CYLINDER - OPTION



**TECHNICAL SPECIFICATIONS**

BASIC TYPE - X116 OPTION SERIES NCY2

Type	Basic Type / Slider Type
Bore Size (mm)	ø25 ~ ø40
Fluid	Hydraulic Fluid
Piston Speed	15 ~ 300mm/s

Model	HT	P	Restriction Diameter
NCY2S25	20	Rc(PT)1	7.5
NCY2S32	24		
NCY2S40	25	Rc(PT)1/4	10

See Technical Drawing in CAT:330



FOR FURTHER TECHNICAL  
DETAILS ON THIS  
PRODUCT, REQUEST  
CATALOG REFERENCE  
N330