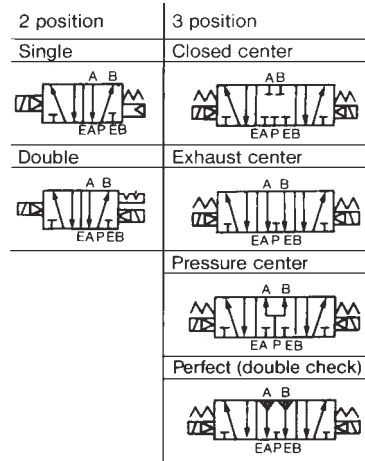


MODEL NVFS4000

Position	Number Of Solenoid	Type Plug-In	Port Size (NPTF)	Cv Factor	Response Time (ms)
2 Position	Single	NVFS4100	3/8	3.3	40 or less
			1/2	6	
	Double	NVFS4200	3/8	3.3	15 or less
			1/2	3.6	
3 Position	Closed Center	NVFS4300	3/8	2.8	50 or less
			1/2	3	
	Exhaust Center	NVFS4400	3/8	2.8	50 or less
			1/2	3	
	Pressure Center	NVFS4500	3/8	3.2	50 or less
			1/2	3.4	
	Perfect (Double Check)	NVFS4600	3/8	1.7	55 or less
1/2			1.8		

SYMBOLS



TECHNICAL SPECIFICATIONS STANDARD

Fluid		Air and Inert Gas	
Valve	Max Operating Pressure		150 PSI (1MPa)
	Min Operating Pressure	2 Position	15 PSI (0.1MPa)
		3 Position	22 PSI (0.15MPa)
	Ambient & Fluid Temperature		Note 1) 14~140°F (-10~60°C)
	Lubrication		Note 2) Not Required
	Pilot Operator Manual Override		Non Locking Push Type (Flush)
	Protection Construction		Dust Proof
Electrical	Rated Voltage	AC	110VAC50/60Hz, 220V50/60Hz, 24V50/60Hz
		DC	12V, 24V
	Allowable Voltage Range		-15 ~ 10% Rated Voltage
	Coil Insulation		Class B or Equivalent
	Apparent Power AC (Power Consumption)	InRush	5.0VA/60Hz, 5.6VA/50Hz
		Holding	2.3VA(1.5W)/60Hz, 3.4VA(2.1W)/50Hz
	Power Consumption DC		1.8W
Electrical Entry	Plug In	Conduit Terminal (Base Access)	

Note 1) Use Dry Air at Low Temperature
 Note 2) Use Turbine Oil No 1 (ISOVG32), if lubricated

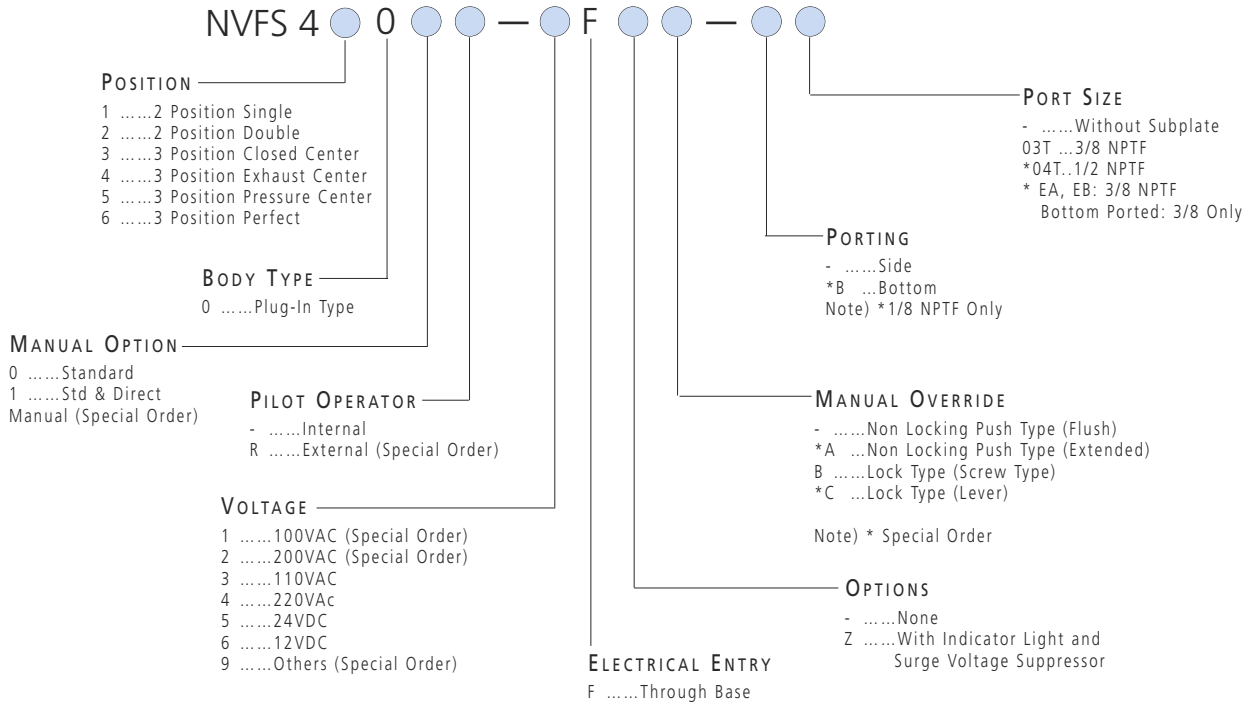
TECHNICAL SPECIFICATIONS OPTIONAL

Pilot Type		External Pilot Type
Manual Override	Main Valve	Direct Manual Override Type
	Pilot Operator	Non Locking Push Type (Extended), Lock Type (Tool), Lock Type (Lever)
Voltage	AC	100V50/60Hz, 200V50/60Hz
	DC	6V, 48V, 100V
Porting		Bottom Ported Subplate
Option		W/Indicator Light & Surge Voltage Suppressor



FOR FURTHER TECHNICAL DETAILS ON THIS PRODUCT, REQUEST CATALOG REFERENCE N233

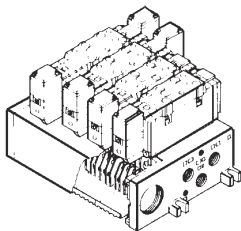
**HOW TO
ORDER
NVFS4000**



**HOW TO
ORDER
MANIFOLD**

Plug-in Type: With Terminal Block

● Lead wires of solenoid valve are connected with the terminals on upper surface of terminal block, corresponding lead wires from power source can be wired at the bottom of terminal block.



NVV5FS4-01T-061-03T

Series NVFS4000
Manifold valve

Plug-in type
With terminal block

Stations

02	2 stations
⋮	⋮
10	10 stations

● Port size

Suffix	P, EA, EB	A, B
03T	1/2 NPTF	3/8 NPTF
04T	1/2 NPTF	1/2 NPTF

* Bottom ported 3/8NPTF only.

● Symbol

Suffix	Port specifications		Porting specifications (A,B)
	P	EA, EB	
1	Common	Common	Side
* 2	Common	Common	*Bottom
	Mixed		

* Special order.

SEE INSIDE FRONT COVER FOR
DETAILS OF YOUR LOCAL SALES OFFICE



FOR FURTHER TECHNICAL
DETAILS ON THIS
PRODUCT, REQUEST
CATALOG REFERENCE
N233

HOW TO
ORDER

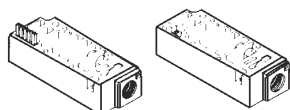
MANIFOLD / OPTION PARTS ASSEMBLY

Manifold / Option Parts

SUP Relocation spacer

An individual SUP spacer on manifold block can form individual P port for the valve.

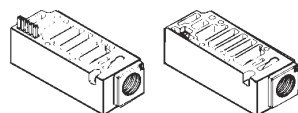
Body type	Plug-in type
Part No.	NVVFS4000-P-03T-1



EXH Relocation spacer

An individual EXH spacer on manifold block can form individual R port for the valve.

Body type	Plug-in type
Part No.	NVVFS4000-R-04T-1



SUP gallery block disc

When supplying manifold with more than one pressure, insert block disc in between stations subjected to different pressures.

Body type	Plug-in type
Part No.	AXT634-10A



SUP block disc

EXH gallery block disc

When valve exhaust affects the other stations on the circuit or when the reverse pressure valve is used on a standard manifold, insert EXH block disc(s) in between stations to separate valve exhaust.

Body type	Plug-in type
Parts No.	AXT634-11A

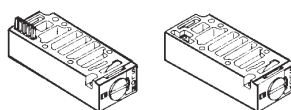


EXH block disc

Interface speed control

Needle valve on the manifold block can control cylinder speed by throttling exhaust.

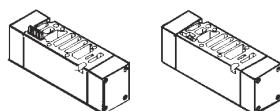
Body type	Plug-in type
Part No.	NVVFS4000-20A-1



Double Check "Perfect" spacer

The concurrent use of perfect spacer with built-in double check valve can stop the cylinder at mid-position and hold for extended time without being affected by normal air leakage across the spool seals.

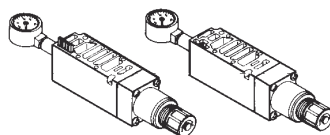
Body type	Plug-in type
Part No.	NVVFS4000-22A-1



Interface regulator

Spacer type regulating valve on manifold block can regulate the pressure to the valve. With std. gauge.

Body type	Plug-in type
Pressure Regulation P	NARBF4000-NO-P-1
Pressure Regulation A	NARBF4000-NO-A-1
Pressure Regulation B	NARBF4000-NO-B-1



Blank plate : VVFS4000-10A

When disassembling valve for maintenance purposes or when spare manifold stations are required, install Blank plate on the manifold block.

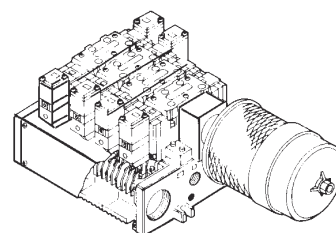
Body type	Plug-in type
Part No.	VVFS4000-10A

Manifold Options

With exhaust cleaner unit

Plug-in type

- Valve exhaust noise damping: 35db or more.
- Oil mist collection: Rate of collection 99.9% or more.
- Piping process reduced.

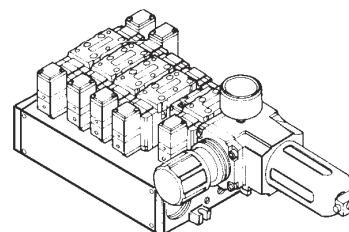


For more information,
refer to catalog N233

With Control Unit

Plug-in type

- Filter/Regulator, Pressure Switch, and Air shutoff valve all combine to form one unit.
- Piping work eliminated.



For more information,
refer to catalog N233



FOR FURTHER TECHNICAL
DETAILS ON THIS
PRODUCT, REQUEST
CATALOG REFERENCE
N233