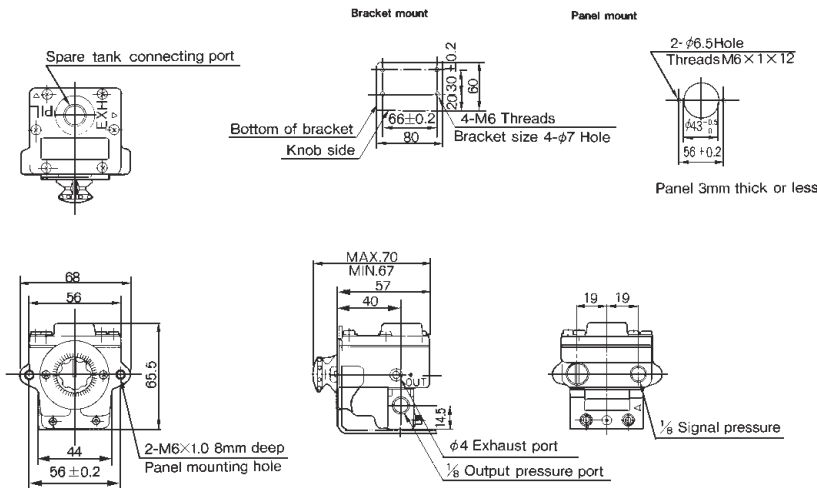


TIME DELAY VALVE SERIES (N)VR2110

A combination of adjustable orifice and fixed flow allows transmission of a pneumatic signal after a fixed time period.



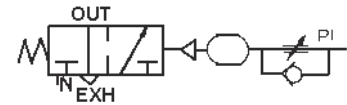
DIMENSIONS TIME DELAY VALVE



TECHNICAL SPECIFICATIONS

Supply Pressure	0 ~ 1MPa / 0 ~ 145 PSI
Signal Pressure	0.25 ~ 0.8MPa / 32 ~ 116PSI
Time Delay	0.5 ~ 60 Sec
Effective Orifice (Cv Factor)	2.5mm ² (0.14)
Port Size	1/8 PT / NPT

SYMBOLS



HOW TO ORDER

TIME DELAY VALVE

NVR2110-N01 (1/8 NPT)
VR2110-01 (1/8 PT)

SHUTTLE VALVE SERIES (N)VR1210, (N)VR1220

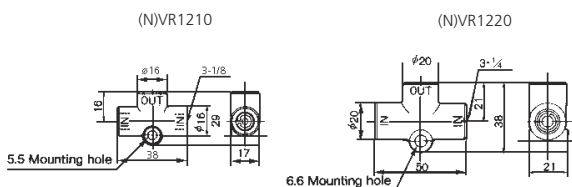
3 ported Check Valve with one output and 2 pneumatic signal input ports



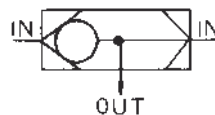
TECHNICAL SPECIFICATIONS

Series	(N)VR1210-01	(N)VR1220-02
Max Operating Pressure	1MPa / 145 PSI	
Min Operating Pressure	0.05MPa / 8 PSI	
Effective Orifice (Cv Factor)	7mm ² (0.38)	15mm ² (0.81)
Port Size	1/8 PT / NPT	1/4 PT / NPT

DIMENSIONS SHUTTLE VALVE



SYMBOLS



HOW TO ORDER

SHUTTLE VALVE

NVR1210-N01 (1/8 NPT)
NVR1220-N02 (1/4 NPT)
VR1210-01 (1/8 PT)
VR1220-02 (1/4 PT)

SEE INSIDE FRONT COVER FOR
DETAILS OF YOUR LOCAL SALES OFFICE



FOR FURTHER TECHNICAL
DETAILS ON THIS
PRODUCT REQUEST
CATALOG REFERENCE
E104