

### 3/2 PILOT OPERATED SOLENOID/SPRING VALVE 10-32NOM

- ✓ N/O or N/C Option
- ✓ 10-32Nom Body Ported or Sub Base Manifold Mounted
- ✓ Cv 0.2 ~ 0.25
- ✓ Optional Lamp and Surge Voltage Suppressor
- ✎ Solenoid Coils are integral and must not be removed
- ✎ These valves are supplied without leads which must be ordered separately (see Accessories Section).

TECHNICAL SPECIFICATIONS

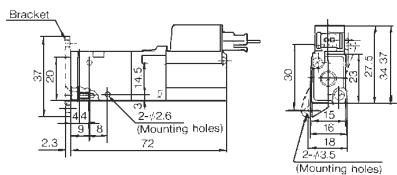
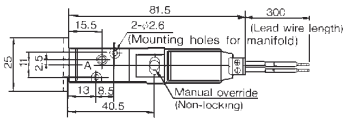
Fluid	Air and Inert Gases
Operating Pressure Range	20 ~ 100PSI (1.5-7kgf/cm <sup>2</sup> )
Ambient and Fluid Temperature	Max 50°C / 122°F
Response Time	20ms or less
Max Operating Frequency	50 Cycles per Second
Manual Override	Non-Locking Push Type
Pilot Exhaust	Individual, Common
Lubrication	Not Required; If Lubrication is provided, use SMC Lubricant
Enclosure	Dust Proof

SOLENOID SPECIFICATIONS

Electrical Entry	Grommet (G), Plug Connector (MN)	
Voltages	AC	24V, 110V, 240V
	DC	12V, 24V
Allowable voltage	-15~+10% of rated voltage	
Coil insulation	Class E or equivalent	
Temperature rise	45°C or less / 113°F or less	
Power consumption DC	1.8W/2.1W (W/LED)	
Apparent power AC	Inrush	4.5VA/50Hz, 4.2VA/60Hz
	Holding	3.5VA/50Hz, 3VA/60Hz
Surge voltage suppressor	DC: Diode, AC: ZNR	
Indicator light	DC: LED (Red), AC: Neon lamp	

DIMENSIONS

SERIES (N)VZ300 BODY PORTED M PLUG TYPE



Observe Operating Pressure Ranges - see Technical Specifications for details

Model		Type of Actuation	Effective Orifice mm <sup>2</sup> /(Cv factor)
Body Ported Type	(N)VZ312	NC	3.6 (0.2)
	(N)VZ322	NO	
Base Mounted Type (with Subplate)	(N)VZ314	NC	4.5 (0.25)
	(N)VZ324	NO	

SYMBOLS

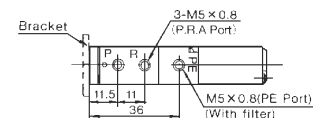
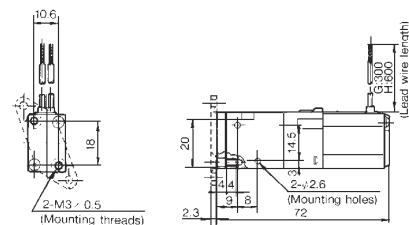
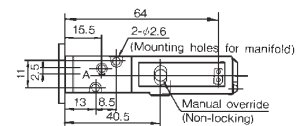


(N)VZ312

(N)VZ322

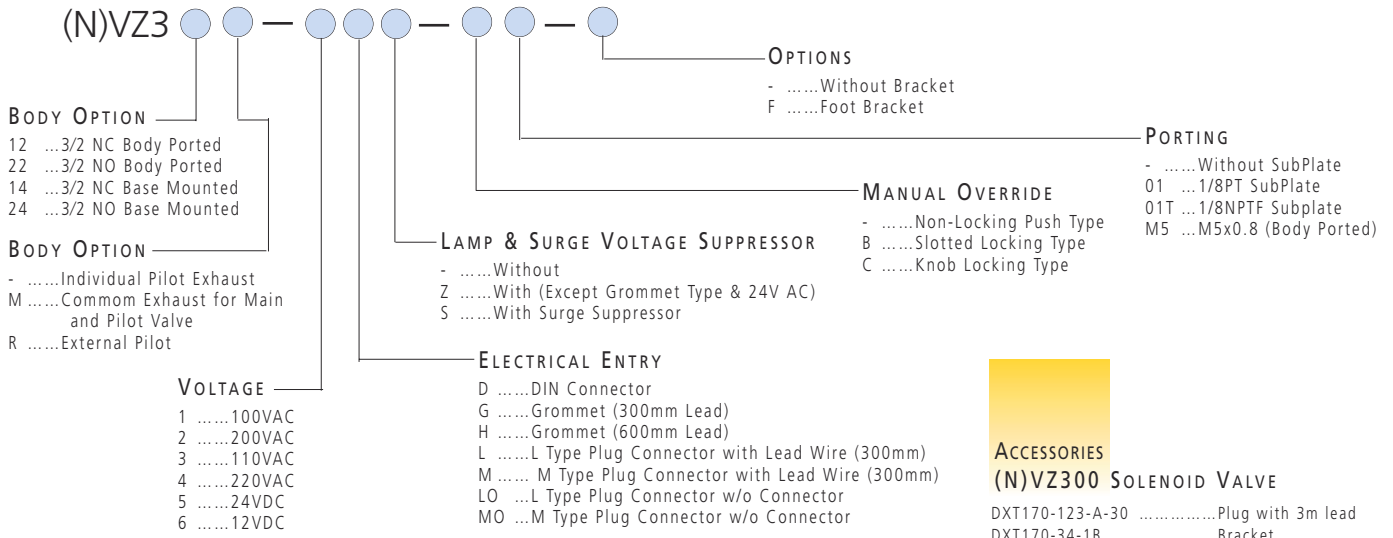
DIMENSIONS

SERIES (N)VZ300 BODY PORTED GROMMET TYPE



How To ORDER SEE NEXT PAGE

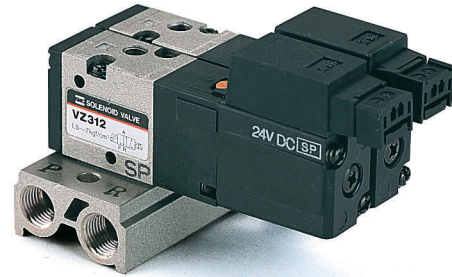
## HOW TO ORDER (N)VZ300 SOLENOID VALVE



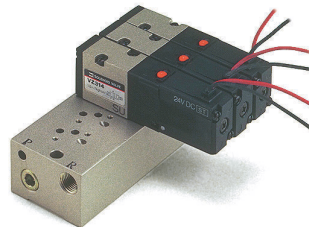
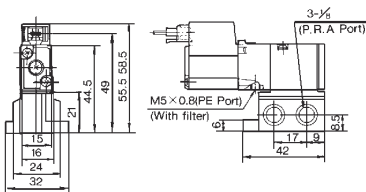
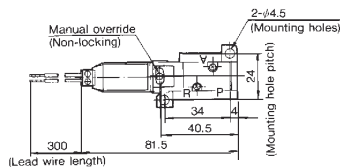
## SERIES (N)VZ300 MANIFOLDS

**A** Single Sub-base and 3 different Manifold Designs.

- (i) Side Entry Single Sub-base for use with the Base Mounted Valve (Type 40).
- (ii) 2-10 Station Type 20 Mmanifold for use with the Body Ported Valve (Type 20).
- (iii) 2-10 Station Type 40 Side Entry Manifold for use with the Base Mounted Valve (Type 40).
- (iv) 2 - 10 Station Type 40 Bottom Entry Manifold for use with the Base Mounted Valve (Type 40).



## DIMENSIONS SINGLE SUB-BASE SIDE PORTED M TYPE PLUG CONNECTOR



SEE INSIDE FRONT COVER FOR  
DETAILS OF YOUR LOCAL SALES OFFICE



FOR FURTHER TECHNICAL  
DETAILS ON THIS  
PRODUCT, REQUEST  
CATALOG REFERENCE  
E120