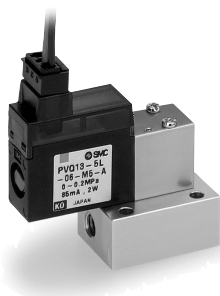


Compact Proportional Solenoid Valve Series *PVQ10*

How to Order

Base mounted

PVQ 13-5 L □ 03-M5-A



Valve type

13 N.C.

Voltage

5	24 VDC
6	12 VDC

Electrical entry

L	L plug connector	
M	M plug connector	

With / Without lead wire

Nil	With lead wire
O	Without lead wire

Body / Seal material

Symbol	Body	Seal
A	C36	FKM
H	Stainless steel	

Port size

Nil	Without sub-plate (with mounting screw M1.7 x 17L, 2 pcs.)	
M5	With sub-plate M5 x 0.8	

Orifice size

Symbol	Orifice dia.	Max. operating pressure
03	0.3 mm \varnothing	0.7 MPa
04	0.4 mm \varnothing	0.45 MPa
06	0.6 mm \varnothing	0.2 MPa
08	0.8 mm \varnothing	0.1 MPa

Specifications

Standard specifications	Valve construction	Direct operated poppet	
	Fluid	Air, Inert gas	
	Seal material	FKM	
	Body material	C36, Stainless steel	
	Fluid temperature	0 to +50°C	
	Ambient temperature	0 to +50°C	
	Action	N.C. (Normally closed)	
	Mounting orientation	Unrestricted	
	Port size	M5	
	Coil specifications	Power supply	24 VDC
Coil current		0 to 85 mA	0 to 170 mA
Power consumption		0 to 2 W	
Coil insulation		Class B	

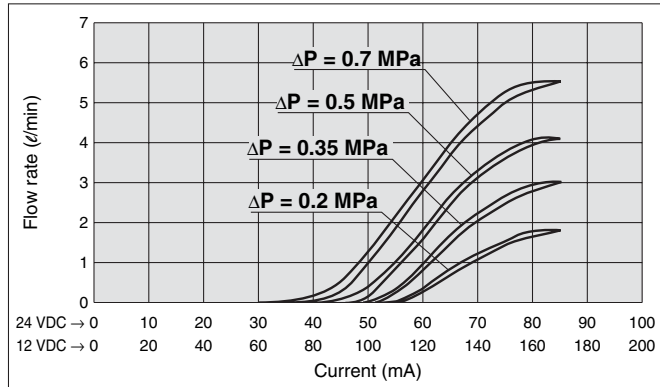
Characteristic specifications	Orifice diameter (mm \varnothing)	0.3	0.4	0.6	0.8
	Max. operating pressure differential (MPa) ^{Note 1)}	0.7	0.45	0.2	0.1
	Max. operating pressure (MPa)	1 MPa			
	Min. operating pressure (MPa) (Vacuum) ^{Note 2)}	0 (0.1 Pa.abs)			
	Flow rate (l/min) (at max. operating pressure differential)	0 to 5	0 to 6		0 to 5
	Hysteresis (at max. operating pressure differential)	10% or less			
	Repeatability (at max. operating pressure differential)	3% or less			
	Start-up current (at max. operating pressure differential)	50% or less			

Note 1) Maximum operating pressure differential indicates pressure differential (difference between inlet and outlet pressure) which can be allowed for operation with the valve closed or open. If the pressure differential exceeds the max. operating pressure differential of orifice, the valve may leak

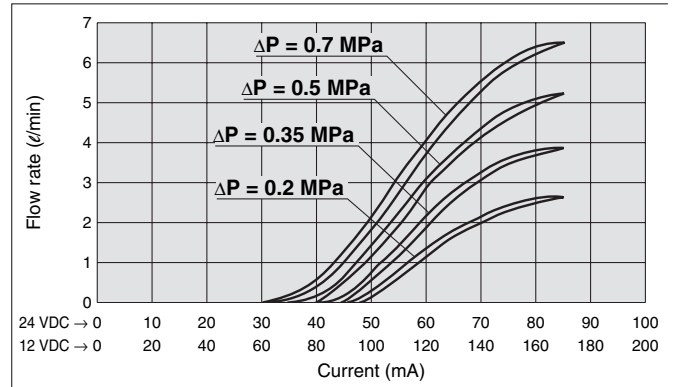
Note 2) For vacuum application, max. operating pressure range is 0 Pa.abs to max. operating pressure differential. A(?) port is applicable for vacuum pressure

Flow Characteristics

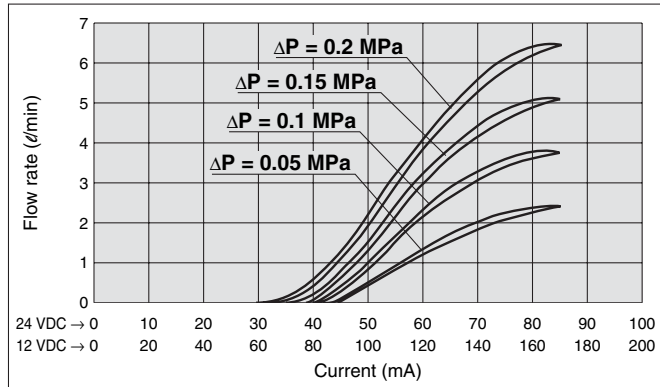
PVQ10 (ø0.3)



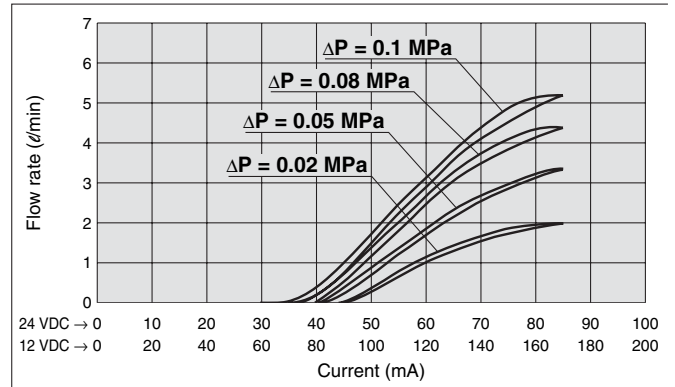
PVQ10 (ø0.4)



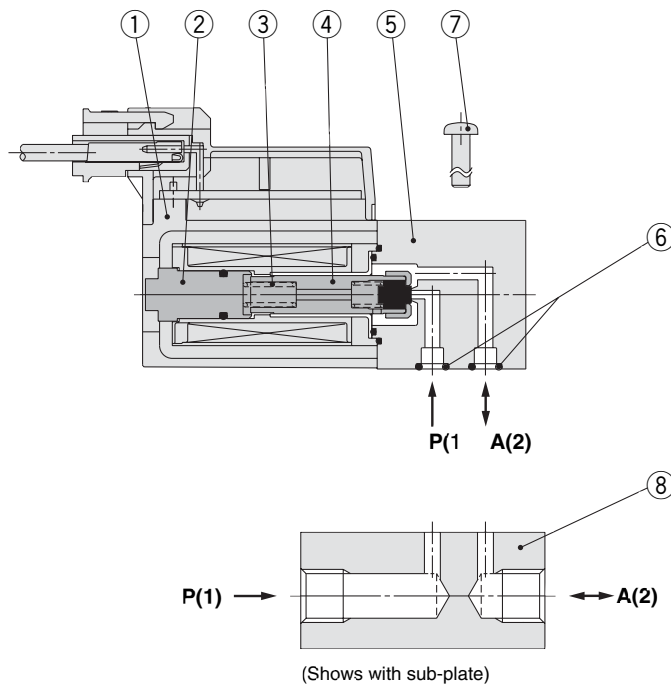
PVQ10 (ø0.6)



PVQ10 (ø0.8)



Construction



Component Parts

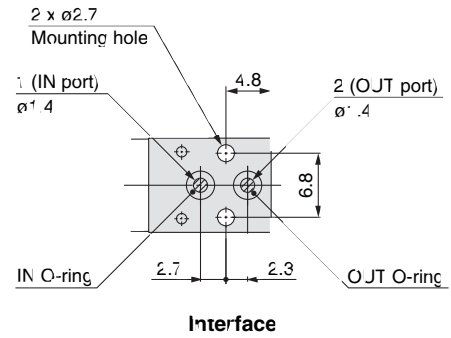
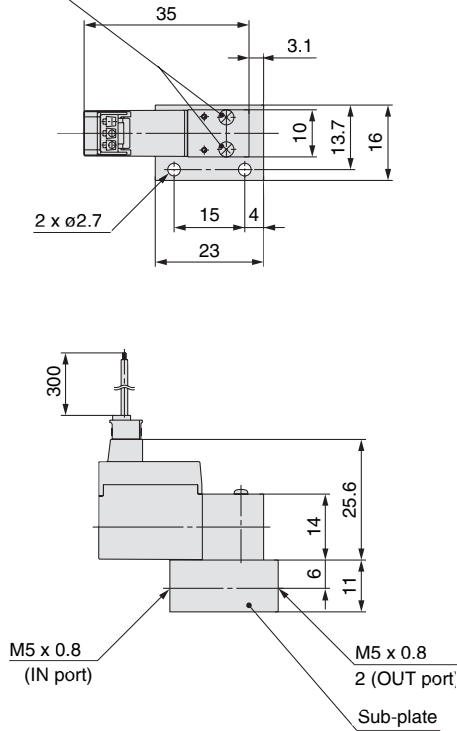
No.	Description	Material	Note
1	Solenoid coil assembly	—	
2	Core	Stainless steel	
3	Return spring	Stainless steel	
4	Armature assembly	Stainless steel, Aluminum, FKM	
5	Body	C36	
6	O-ring	FKM	
7	Round head combination screw	Steel	M1.7 x 0.35 x 17L 2 pcs.
8	Sub-plate	C37	Part no. PVQ10-15-M5

Series PVQ10

Dimensions

L plug connector PVQ13-□L-□-M5

Round head combination screw



M plug connector PVQ13-□M-□-M5

Round head combination screw

