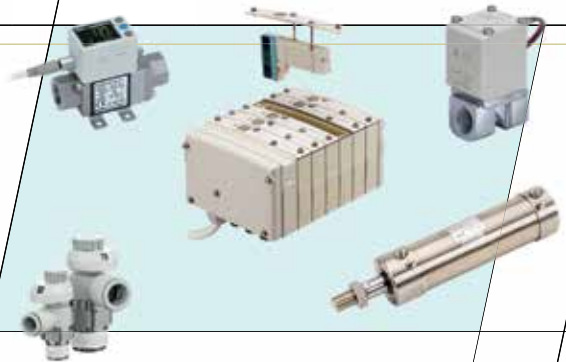




Powering Innovation in Packaging Solutions - with SMC



INDEX



Stainless Steel Products	1	Resin Products	5
Stainless Steel Cylinder – CJ5•S, CG5•S, CG5-X6011 (NFPA mount)		Chemical Resistant One-touch Fittings – KP	
Stainless Steel Cylinder with Hygienic Switch Rail – CG5		High Purity Fluoropolymer Fittings – LQ3	
Stainless Steel Clean Design Cylinder – CG5-X2977		VIPER™ High Purity Fluoropolymer Air Operated 2 and 3 Way Valves	
Stainless Steel Cylinder with ISO 6432 Dimensions – C85		High Purity Fluoropolymer Tubing – TL/TIL (FDA Compliance)	
Stainless Steel Cylinder – NCM-X6009		Soft Fluoropolymer Denatured PTFE Tubing – TD/TID (FDA Compliant)	6
Stainless Steel Speed Controller – ASG		General Grade PFA Fluoropolymer Tubing – TLM/TILM (FDA Compliant)	
Stainless Steel 316 One-touch Fittings – KQG2		Polyethylene Tubing – PEAPP (FDA Compliance)	
Stainless Steel 316 Insert Fittings – KFG2	2	Fluoropolymer Tubing (FEP) – TH/TIH	
Stainless Steel 316 Miniature Fittings – MS		Polyurethane Tubing – TU/TIUB	
Stainless Steel Quick Connect S Couplers – KKA		Nylon Tubing – T/TIA	7
Compact Guided Cylinder / Stainless Steel Parts – MGP-XC6 (A/B)		Fieldbus Systems	7
Stainless Steel Filter/Regulator – AW30-X2207		Serial Transmission – EX250, EX260, EX500, EX600, EX600-W	
Hygienic	3	Smart Valve Interface – UIUSP-XXX-DUO02979	
Hygienic Design Cylinders – HYB, HYQ, HYC, HYG		Pressure Regulator & Electric Vacuum Regulator -UIUSP-DUQ00833	8
NAMUR Mount Hygienic 3/5 Port Solenoid Valve – VFN-X36		Static Electricity Removal Equipment	8
Hygienic Design & IP69K Valve Manifold – SY5000-X500		Ionizer Bar Type – IZS	
Other Cylinders	3	Ionizer Nozzle Type – IZN10	
Standard Cylinder – CQ2Z (Including Rear Clevis Type)		Hand Held Electrostatic Meter – IZH10	
Heavy Duty Stopper Cylinder – RS2H		Ionizer Fan Type – IZF10	
Parallel Style Air Gripper MHZ2	4	Instrumentation	9
Parallel Style Air Gripper: Wide Type – MHL2		Digital Pressure Switch – ISE/ZSE10	
Low Profile Air Gripper – MHF2		Digital Pressure Switch, IO-Link compatible – ISE-20	
Related Products	4	Digital Pressure Switch – ISE/ZSE40A	
Electroless Nickel Plated (Brass Parts) Fittings – KQB2		Digital Pressure Switch – ISE70, ISE75, ISE75H	
Epoxy Coated Air Preparation – AC Series		Digital Pressure Switch – ISE/ZSE80	
Epoxy Coated Water Separator – AMG-X229	5	Digital Flow Switch for Water – PF3W	10
Modular Style F.R.L. Combination – AC-A Series		Digital Flow Switch for Air– PFM	
		Electromagnetic Flow Switch for Water – LFE	





Solenoid Valve	10	Air Preparation	16
5 Port Solenoid Valve – SY3000/5000		Thermo-Chiller – HRS	
5 Port Solenoid Valve – VQC1000/2000/4000	11	Thermo-Chiller – HRZ	
5 Port Solenoid Valve – SV1000/2000/3000/4000		Air Preparation – “Smart” FRL	17
3 Port Conveyor Valve – VFD		Filtration – AFF	
High Frequency Valve – VQJ01		Energy Saving Precision Regulator – IR	
High Frequency Valve – SX10		Membrane Air Dryer – IDG	18
Direct Operated 2 Port Solenoid Valve – VXN	12	Refrigerated Air Dryer – IDFB	
Direct Operated 2 Port Solenoid Valve – VX2		Diagnostic Products	18
Stand-By Valve – SBV		Automatic Leak Detection – ALDS	
Air Saving Valve – ASQ/ASR		Manual Leak Detection – MLDS	
Vacuum	12	Data Logger	19
Multistage Vacuum Ejector – ZL112/212		Air Management System - AirMaS™ Technology	
Vacuum Ejector – ZH	13	Safety Related	19
Vacuum Ejector In-line Type – ZU		ISO 13849-1 Compliant Safety Shut-off, Exhaust Valve – VG342	
Vacuum Saving Valve – ZP2V		Pilot operated check valves with direct monitoring – XT34-303	
Vacuum Pad with Integrated Ejector – ZHP		Safety Zone Valve, Manifold – SY	
Space Saving Vacuum Ejector/Pump System – ZB		Air Cylinder with Built-in Magnet and End Lock – CA2	20
Vacuum Pad – ZP3	14	Speed Control Valve with Pilot Operated Check Valve	
Vacuum Manifold – ZK2		Other Products	20
Large Blow and Vacuum Flow – ZH-X185		Reverse Pulse Jet Valve – JSXFA	
Non-Contact Suction Lift – XT661		Flow Control with Digital Indicator – AS-FS	
Energy Saving Ejector – ZM□□□-X298		Air Blow Gun – VMG	
Specialty Cylinders	15		
Electric Actuator – LES, LEF, LEJ, LEL, LEY, LEYG, LEP, LEH, LER			
Clean Series Electrical Actuator – LEY			
Servo and Step Motor Controller – LECP6, JXC			
Cost Effective Multi Position Cylinder – MPC	16		



Stainless Steel

Stainless Steel Cylinder

Corrosion resistant



Series	Action	Bore size (mm)
CJ5-S	Double acting Single rod	10, 16
CG5-S		20, 25, 32, 40, 50, 63, 80, 100
CG5-X6011		40, 50, 63, 80, 100

Features	<ul style="list-style-type: none"> • External metal parts: Stainless steel 304 • Seal parts: NBR or FKM • Ambient and fluid temperature: <ul style="list-style-type: none"> 14 to 158°F (-10 to 70°C) (without auto switch) 14 to 140°F (-10 to 60°C) (with auto switch) • Pre-lubricated with food grade grease • Repairable • X6011 option available to support NFPA mountings • Built-in rod wiper to protect interior from contaminants 	
----------	---	--

Series	Action	Bore size (mm)
CJ5-X2977	Double acting Single rod	20, 25, 32, 40, 50, 63, 80, 100

Features	<ul style="list-style-type: none"> • Made for use in wet and aggressive environments. • Easy and efficient to clean and globally usable through the use of FDA and EU 1935/2004 compliant materials. • The cylinders of the CG5-X2977 series have a special scraper according to FDA and EU 1935/2004, preventing water penetration and meeting American and European food legislation requirements. • Perfectly suited for use in wet areas of food and beverage industry and in parts of the pharmaceuticals industry. 	
----------	--	--

Stainless Steel Cylinder with ISO 6432 Dimensions

Made to Order

Corrosion resistant

Hygienic



This cylinder is made in Italy.
Please contact SMC for all inquiries.

Series	Action	Bore size (mm)
C85	Double acting Single rod	16, 20, 25, 32, 40, 50
Features	Hygienic design for splash area	

Stainless Steel Cylinder

Corrosion resistant



Series	Action	Bore size (inch)
NCM-X6009	Double acting Single rod	3/4, 7/8, 1-1/16, 1-1/4, 1-1/2, 2

Features	<ul style="list-style-type: none"> • External metal parts: Stainless steel 304 • Seal parts: NBR or FKM • Ambient and fluid temperature: <ul style="list-style-type: none"> 14 to 158°F (-10 to 70°C) (without auto switch) 14 to 140°F (-10 to 60°C) (with auto switch) • Food grade grease available • Built-in rod wiper to protect interior from contaminants • Dimensionally interchangeable with standard NCM • Enhanced side load capability due to internal wear ring 	
----------	---	--

Stainless Steel Speed Controller

Corrosion resistant



Series	Applicable tubing O.D. (mm)	Connection thread (Metric)
ASG	4, 6, 8, 10, 12	M5, 1/8, 1/4, 3/8, 1/2

Features	<ul style="list-style-type: none"> • Metal parts: Stainless steel 316 (Internal seat ring SUS 303) • Seal parts: FKM • Ambient and fluid temperature: 23 to 140°F (-5 to 60°C) • Thread sealant standard 	
----------	--	--

Stainless Steel

Stainless Steel 316 One-touch Fittings

Corrosion resistant

Heat resistant



Series	Applicable tubing O.D.	Connection thread
KQG2	3.2, 4, 6, 8, 10, 12, 16 mm 1/8, 5/32, 1/4, 5/16, 3/8, 1/2 inch	Metric: M5, 1/8, 1/4, 3/8, 1/2 Inch: 10/32, 1/8, 1/4, 3/8, 1/2
Features	<ul style="list-style-type: none"> • Metal parts: Stainless steel 316 • Seal parts: FKM • Operating fluid temperature: 23 to 302°F (–5 to 150°C) • Grease-free • May be used with steam • Certified to meet current Food Sanitation Law standards 	

Stainless Steel 316 Insert Fittings

Corrosion resistant

Heat resistant



Series	Applicable tubing O.D.	Connection thread
KFG2	4, 6, 8, 10, 12, 16 mm 1/8, 5/32, 1/4, 5/16, 3/8, 1/2 inch	Metric & Inch: 1/8, 1/4, 3/8, 1/2
Features	<ul style="list-style-type: none"> • Metal parts: Stainless steel 316 • Operating fluid temperature: –85 to 500°F (–65 to 260°C) 23 to 302°F (–5 to 150°C) (for swivel elbow) • Grease-free • May be used with steam • Certified to meet current Food Sanitation Law standards 	

Stainless Steel 316 Miniature Fittings

Corrosion resistant



Series	Applicable tubing O.D. (mm)	Connection thread (Metric)
MS	3.2, 4, 6	M5, 1/8
Features	<ul style="list-style-type: none"> • Metal parts: Stainless steel 316 • Operating fluid temperature: 23 to 140°F (–5 to 60°C) • May be used with water 	

Stainless Steel Quick Connect S Couplers

Corrosion resistant

Heat resistant



Series	Connection thread (R, Rc)
KKA	1/8, 1/4, 3/8, 1/2, 3/4, 1, 1 1/4, 1 1/2
Features	<ul style="list-style-type: none"> • Metal parts: Stainless steel 304 • Seal parts: FKM • Operating fluid temperature: 23 to 302°F (–5 to 150°C) • Grease-free • Both plug and socket have integral check valve • May be used with water

Compact Guided Cylinder / Stainless Steel Parts

Corrosion resistant



Series	Action	Bore size (mm)
MGP-XC6 (A or B)	Double acting	12, 16, 20, 25, 32, 100
Features	<ul style="list-style-type: none"> • Material for steel parts and rods changed to stainless steel • See document 99-E478 for more details 	

Stainless Steel Filter/Regulator

Corrosion resistant

Hygienic



Series	AW30-X2207
Features	<ul style="list-style-type: none"> • Stainless steel body • Hygienic design • Operating pressure = 145 psi (1 MPa) on X2207 type and 60 psi (0.4 MPa) on X2592 type • 5 micron filtration rating • Consult SMC's Food & Packaging Industry Group for more details

Hygienic

Hygienic Design Cylinder

Hygienic



Type	Series	Action	Bore size (mm)
Round type	HYB	Double acting	20, 25, 32, 40, 50, 63, 80, 100
Basic type	HYQ*		20, 25, 32, 40, 50, 63
ISO standard type	HYC*		32, 40, 50, 63
With guide	HYG		20, 25, 32, 40, 50, 63
Features	<ul style="list-style-type: none">• Water resistant cylinders designed for easy cleaning• 5 times increase in service life, compared to other water resistant cylinders• Food grade grease available• Ambient and fluid temperature: 14 to 158°F (–10 to 70°C) (without auto switch) 14 to 140°F (–10 to 60°C) (with auto switch)• Seal material: NBR or FKM* Conform to ISO/VDMA standard		

NAMUR Mount Hygienic 3/5 Port Solenoid Valve

Hygienic



Series	Port size	Cv factor	Power consumption
VFN (-X36)	NPT1/4"	0.8	0.5 W
Features	<ul style="list-style-type: none"> • Corrosion resistant and IP67 • Ambient and fluid temperature: 14 to 140°F (–10 to 60°C) • 3-way solenoid valve configuration (for Single acting actuator) • 5-way solenoid valve configuration (for Double acting actuator) • Throttle plate available to precisely control flow • Available in AC and DC voltages 		

Hygienic Design & IP69K Valve Manifold

Heat resistant

Corrosion resistant



Series	SY5000-X500 (Cv = 0.7 – metal / 0.9 – rubber)
Features	<ul style="list-style-type: none"> • IP69K rated to withstand high-pressure and steam cleaning • Ability to install valves outside of protective panel and close to actuators for better control • No gap between stations / Easy to clean • Small, lightweight package • Corrosion resistant

Other Cylinders

Standard Cylinder

Improved Features

Mounting Option
Rear Clevis



Series	Action	Bore size (mm)
CQ2Z	Double acting	12, 16, 20, 25, 32, 40, 50, 63, 80, 100, 125, 140, 160, 180, 200
Features	<ul style="list-style-type: none"> • Able to mount compact auto switches on 4 surfaces (2 surfaces for 12mm and 25mm bore) • Less protrusion since auto switch mounting rail is not necessary • Lightweight due to compact size 	

Heavy Duty Stopper Cylinder

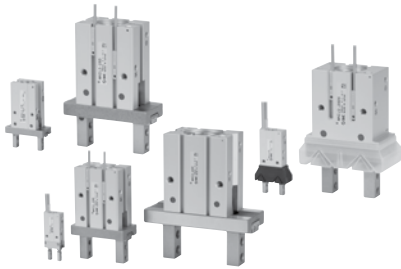
Heavy Duty



Series	Action	Bore size (mm)
RS2H	Double acting Double acting spring type Single acting/spring extend	50, 60, 80
Features	<ul style="list-style-type: none"> • Better handling and visibility of the lock mechanism (option) • Piping is available from 2 directions • The roller can be selected from two materials to suit the application (Resin, Carbon steel) 	

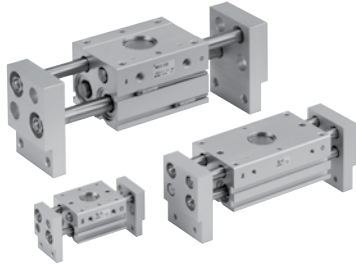
Other Cylinders

Parallel Style Air Gripper



Series	Action	Bore size (mm)
MHZ2	Double acting Single acting/Normally open and closed	6, 10, 16, 20, 25
Features	<ul style="list-style-type: none"> • Integral linear guide used of high rigidity and high precision • Accommodates diverse workpiece diameters with a single unit • Wide variety of types and broad size variations 	

Parallel Style Air Gripper: Wide Type



Series	Action	Bore size (mm)
MHL2	Double acting	10, 16, 20, 25
Features	<ul style="list-style-type: none"> • Built-in Dust -protection mechanism • Double-end type Oil-impregnated resin bearings with a metal backing are used of all shafts. • A large amount of gripping force is provided through the use of double piston mechanism, while maintaining a compact design. • Smaller auto switch mountable 	

Low Profile Air Gripper



Series	Action	Bore size (mm)
MHF2	Double acting	8, 10, 12, 16, 25, 20, 32
Features	<ul style="list-style-type: none"> • Height is approximately 1/3 the size of an equivalent MHZ2 • Stroke selection is available • High degree of mounting flexibility • Strong holding force 	

Related Products

Electroless Nickel Plated (Brass Parts) Fittings

Heat resistant

Corrosion resistant



Series	Application tubing O.D.	Connection thread
KQB2	Inch: ϕ 1/8, 5/32, 1/4, 5/16, 3/8, 1/2 Metric: ϕ 3.2, 4, 6, 8, 10, 12, 16 G: ϕ 4, 6, 8, 10, 12, 16	Inch: 1/8, 1/4, 3/8, 1/2 Metric: M5, 1/8, 1/4, 3/8, 1/2 G: 1/8, 1/4, 3/8, 1/2
Features	<ul style="list-style-type: none"> • All metal body • Operating fluid temperature: 23 to 302°F (–5 to 150°C) • Grease-free • May be used with water • Thread sealant standard 	

Epoxy Coated Air Preparation

Corrosion resistant



Features	<ul style="list-style-type: none"> • Stocking plan in place • Low cost corrosion resistant option • External surface of die-casted parts are coated • Hardware changed to stainless steel • See catalog NP146 for more details
----------	---

Related Products

Epoxy Coated Water Separator

Corrosion resistant



Series	Port size Metric, G, NPT	Ambient & fluid temperature
AMG	1/8, 1/4, 3/8, 1/2, 3/4, 1, 1-1/2, 2	40 to 140°F / 5 to 60°C
Features	<ul style="list-style-type: none"> Removes 99.9% of water droplets Element is resistant to clogging SMC one-touch fitting standard on auto drain connection Extremely low pressure drops Epoxy coating available (-X229 option) 	

Modular Style F.R.L. Combination



Series	Modular Style F.R.L. Combination – AC-A
Features	<ul style="list-style-type: none"> Improved corrosion resistance due to use of resin material Better visibility and safety from Double Layer Polycarbonate bowl Standard backflow function to release residual air pressure Easy maintenance and installation with new spacer Mounting dimensions are interchangeable with current AC

Resin Products

Chemical Resistant One-touch Fittings

Corrosion resistant



Series	Tubing O.D. (mm)	Connection thread (Metric)
KP	ø4, ø6, ø8, ø10, ø12	1/8, 1/4, 3/8, 1/2
Features	<ul style="list-style-type: none"> Metal parts: brass w/electroless nickel plating or stainless steel 304 Resin parts: Polypropylene Seal parts: EPDM Operating fluid temperature: -4 to 176°F (-20 to 80°C) May be used for vacuum Applicable fluids: Air, Water, Nitrogen 	

High Purity Fluoropolymer Fittings

Corrosion resistant



Series	Port size	Tubing O.D. (mm)	
		Metric size	Inch size
LQ3	1/8", 1/4", 3/8", 1/2", 3/4, 1"	ø3, ø4, ø6, ø10 ø12, ø19, ø25	1/8", 1/4", 3/8" 1/2" 3/4" 1"
Features	<ul style="list-style-type: none"> 22 configurations Operating temperature up to 392°F (200°C) Able to withstand pressure up to 500 psi (3.45 MPa) Hyperflare type provides 3X to 5X improved performance for temperature, pressure, side-load, and tensile load vs. standard flare 		

VIPER™ Air Operated 2 and 3 Way Valves

Space Saving

Corrosion resistant



Series	LVQ
Features	<ul style="list-style-type: none"> Material of construction high purity PFA Zero dead volume PTFE diaphragm construction ensures consistent and repeatable opening and closing Various types: manually operated, tube extension, back pressure tolerant

High Purity Fluoropolymer Tubing

Corrosion resistant

Heat resistant



Series	Tubing O.D.	
	Metric size	Inch size
TL/TIL	ø4 to ø19	ø1/8" to ø1"
Features	<ul style="list-style-type: none"> Maximum operating temperature: 500°F (260°C) Materials: Super PFA FDA compliant to 21 CFR 177-1550 	

Resin Products

Soft Fluoropolymer Denatured PTFE

Corrosion resistant

Heat resistant



FDA Compliance

Series	Tubing O.D.	
	Metric size	Inch size
TD/TID	ø4 to ø12	ø1/8" to ø1/2"
Features	<ul style="list-style-type: none"> Flexibility: Improved by approx. 20% compared to SMC series TL/TIL Passed the FDA elution test 177-1550 Material: Modified PTFE Maximum operating temperature: 500°F (260°C) Excellent chemical resistance 	

General Grade PFA Fluoropolymer Tubing

Heat resistant

Corrosion resistant



FDA Compliance

Series	Tubing O.D.		Color
	Metric size	Inch size	
TLM/TILM	ø2 to ø25	ø1/8" to ø1-1/4"	Translucent, Black, Red, Blue
Features	<ul style="list-style-type: none"> Maximum operating temperature: 500°F (260°C) Passed the FDA elution test 177-1550 Excellent chemical resistance 		

Polyethylene Tubing

Corrosion resistant



FDA Compliance

Series	Tubing O.D.	
	Metric size	Inch size
PEAPP	ø4, ø6, ø8, ø10, ø12, ø14, ø16	ø1/4, ø3/8, ø1/2, ø5/8
Features	<ul style="list-style-type: none"> FDA type 1, Class A, category 4 polyethylene (Complies with FDA 21 CFR 177.1520 for olefin polymers (par (c) 3.2a) Economical and lightweight Excellent environmental stress crack resistance Six colors Excellent resistance to solvents Chemically inert Resistant to sunlight and other forms of ultra-violet radiation (black only) Service temperature range: -50 to 140°F (-45 to 60°C) 	

Fluoropolymer Tubing

Corrosion resistant

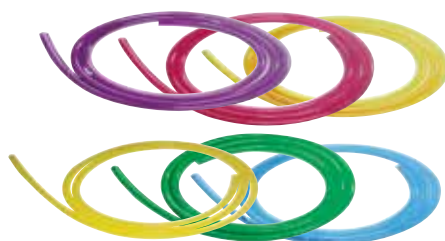
Heat resistant



Series	Tubing O.D.		Color
	Metric size	Inch size	
TH/THI	ø4, ø6, ø8, ø10, ø12	ø1/8, ø3/16, ø1/4 ø3/8, ø1/2, ø3/4	Translucent, Black, Red, Blue
Features	<ul style="list-style-type: none"> Material: FEP (Fluorinated Ethylene Propylene Resin) Maximum operating temperature: 392°F (200°C) Certified to meet current Food Sanitation Law standards See catalog ES50-22 for chemical resistance chart 		

Polyurethane Tubing

Corrosion resistant



Series	Tubing O.D.		Color
	Metric size	Inch size	
TU/TIUB	ø4, ø6, ø8, ø10, ø12	ø1/8, ø5/32, ø3/16, ø1/4 ø5/16, ø3/8, ø1/2	29 Color variations
Features	<ul style="list-style-type: none"> Made from polyether resin for better immunity to hydrolysis 5 standard stocked lengths Excellent flexibility High resistance to fungus and microorganism attacks 		

Resin Products

Nylon Tubing

Corrosion resistant



Series	Tubing O.D.		Color
	Metric size	Inch size (nominal)	
T/TIA	ø4, ø 6, ø8, ø10, ø12, ø16	ø1/8", ø3/16", ø1/4", ø3/8", ø1/2"	6 Color variations
Features	<ul style="list-style-type: none"> • Excellent low moisture absorption and dimensional stability characteristics • Broad chemical resistance 		

Fieldbus Systems

Serial Transmission

Labor Savings



Series	Enclosure	Communication protocol	Applicable valve
EX250	IP67	DeviceNet	SY3000/5000/7000 SV1000/2000/3000 VQC1000/2000/4000/5000 S0700
		Profibus-DP	
		CC-Link	
		Actuator Sensor interface (AS-I, ASI)	
		CAN Open	
		EtherNet/IP	
EX260	IP67	DeviceNet	SY3000/5000/7000 SV1000/2000/3000 VQC1000/2000/4000/5000 S0700
		Profinet	
		CC-Link	
		Profibus-DP	
		EtherCAT	
		EtherNet/IP	
Features	• Simple connection options • Maximum 32 inputs (EX250)/32 outputs • Rockwell Automation Encompass Partner		
EX500	IP65	DeviceNet	SV1000/2000/3000/4000
		Profibus-DP	VQC1000/2000/4000/5000
		CC-Link	S0700
		EtherNet/IP	SY3000/5000/7000
Features	• Valve unit manifold and input unit manifold can be connected around the GW unit • Compatible with various protocols by replacing the GW unit • 64 inputs/64 outputs		
EX600	IP67	CC-link V2	SV1000/2000/3000 VQC1000/2000/4000/5000 S0700 SY3000/5000/7000
		DeviceNet	
		Profibus-DP	
		EtherNet/IP	
		EtherCAT	
Features	• Self diagnosis function • Reduction in wiring time with SPEEDCON (Phoenix contact) • Digital & Analog Input/Output available • 9 input and output units may be connected in any order • Handheld terminal available for parameter setting and I/O monitor tool		
EX600-W	IP67	Profibus-DP	SV1000/2000/3000 VQC1000/2000/4000/5000 S0700
		EtherNet/IP	SY3000/5000/7000
Features	• Communication cables not required • Point-to-multipoint communication • Wiring material cost and installation work-hours can be reduced • Interchangeability is maintained between EX600 series SI units • Replacement of wireless and wired systems is possible		

IP65 and IP67

Smart Valve Interface

Modular Design

Diagnostic Feedback

Space Saving



IP67

Communication Protocol

	Protocol	Number of output	SI unit output polarity	Communication Connector
SEN1	EtherNet/IP	32	Negative common (PNP)	M12
SEN2			Positive common (NPN)	
SMB1	Modbus TCP (Contact SMC for information)	32	Negative common (PNP)	
SMB2			Positive common (NPN)	
Features	<div><div><ul style="list-style-type: none">• Configuration settings and diagnostics available through standard web browser• No dip switches to set</div><div><ul style="list-style-type: none">• Device Level Ring (DLR) able to sustain single failure in the ring and still continue to function• Field upgradable</div></div>			

Fieldbus Systems

E/P Pressure Regulator & Electric Vacuum Regulator w/Fieldbus Capability

Innovative Solution



I/O Link Compatible



IP65

UIUSP-DUQ00833	E/P Pressure Regulator
Features	<ul style="list-style-type: none"> • Daisy chain Power Over Ethernet • Built-in two port ethernet switch • 12 Bit resolution In/Out • Device Level Ring and Quick Connect (Ethernet/IP type) • Built in web server • Available in ITV1000, 2000 and 3000 sizes • Available with Modus TCP (contact SMC for information) • See flyer PDF248 for more details

Static Electricity Removal Equipment

Ionizer – Bar Type

Electrostatic removal



Series	Type	Ion generation method	Method of applying voltage	Ion balance
IZS	Bar type	Corona discharge type	Sensing DC, Pulse DC, DC	30 V or less
Features	<ul style="list-style-type: none"> • Quick discharge time • Measures the polarity of a discharged object, as well as the amount of charged electricity • Continuously emits ions in accordance with the polarity applied onto a workpiece • Built-in power supply so high voltage power supply cable is unnecessary 			

Ionizer – Nozzle Type

Electrostatic removal



Series	Type	Ion generation method	Method of applying voltage	Ion balance
IZN10	Nozzle	Corona discharge type	High frequency AC type	±10V
Features	<ul style="list-style-type: none"> • Point of use design for short range static elimination • Low air consumption • Quick discharge time • Electrode needle contamination detector • Built-in power supply so high voltage power supply cable is unnecessary • Mounted housing remains in place when a new unit is required 			

Handheld Electrostatic Meter

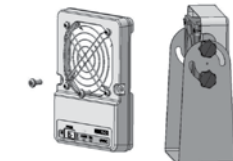
Troubleshooting Device



Series	IZH10
Features	<ul style="list-style-type: none"> • Lightweight, handheld device • AA battery powered • Can display current, max or min value • Measurement range ±20.0 kV • Accuracy of ±5% full scale

Ionizer – Fan Type

Electrostatic removal



Easy maintenance by simply removing the case to clean the electrodes

Series	IZF10
Features	<ul style="list-style-type: none"> • Compact design allows for enclosure mounting • Ion balance: ±15V • Discharge time: 2.5 sec • Detects dirt on the electrodes • Does not require a pneumatic air supply

Instrumentation

Digital Pressure Switch

Space Saving

Labor Savings



I/O Link Compatible

Series	Set pressure range (psi)	Mounting options
ISE20B	-15 to 152	Bracket, Panel
Features	<ul style="list-style-type: none"> • Improved Operability • Quick 3-step set up process • Compact and Lightweight 	

Digital Pressure Switch

Space Saving

Labor Savings



Series	Set pressure range (psi)	Mounting options
ISE/ZSE10	-15 to 152	Direct, Panel, Din Rail
Features	<ul style="list-style-type: none"> • Extremely low profile • Quick 3-step set up process • Settings of the master sensor can be copied to up to 10 slave sensors 	

Digital Pressure Switch

Labor Savings



IP65

Series	Rated pressure range (psi)	Mounting options
ISE/ZSE40A	0.00 to 14.69 (ZSE) -14.5 to 145 (ISE)	Bracket, panel mounting, One-touch fitting, direct/wall mounting, M8 or M12 connector
Features	<ul style="list-style-type: none"> • Meets RoHS, UL, CE and CSA Standards • Applicable media – Air, non-corrosive gas, Non-flammable gas • 2 switch outputs monitor air pressure for critical responses • Quick 3-step set up process • 4-position digital display allows easy reading of displayed values • Settings of the master sensor can be copied to up to 10 slave sensors 	

Digital Pressure Switch

High-pressure



IP67

Series	Rated pressure range (psi)	Proof pressure (psi)
ISE70 (Air)	0 to 145	2175
ISE75 (General fluids)	58 to 1450	4350
ISE75H (General fluids)	72 to 2175	6525
Features	<ul style="list-style-type: none"> • 2-color digital display • IP67 • Liquid compatible 	

Digital Pressure Switch

High-pressure



IP65

Series	Rated pressure range (psi)	Port size
ISE/ZSE80	-14.5 to 290	1/8, 1/4
Features	<ul style="list-style-type: none"> • Use for general fluids • 2-color digital display • Quick 3-step set up process • Stainless steel (metal parts) 	

Instrumentation

Digital Flow Switch for Water

Space Saving



Series	Fluid temperature range	Rated flow range (L/min)
PF3W	32 to 194°F (0 to 90°C)	0.5 to 4, 2 to 16, 5 to 40
Features	<ul style="list-style-type: none"> • Flow sensor, Flow Control Valve and Temperature Sensor integrated into one device • Display rotates for flexible installation • 3-color/2 screen display 	

Digital Flow Switch for Air

Space Saving

Labor Savings

PFMB series
with flow rate range
2 to 1000 L/m



Series	Flow rate range (L/min)	Piping variations
PFM	10, 25, 50, 100	One-touch fittings, female threads, straight piping or bottom piping
Features	<ul style="list-style-type: none"> • 2-color digital display • Repeatability: $\pm 1\%$ F.S. or less • Flow adjustment valve is integrated for reduced piping and space • Response time: Either 50 msec., 0.5 sec., 1 sec. or 2 sec. can be chosen 	

Electromagnetic Flow Switch for Water

Unique Solution



Series	Rated flow gal/min (L/min)	Piping
LFE	0.1 to 5.3 (0.5 to 20) 0.66 to 26.4 (2.5 to 100) 1.3 to 52.8 (5 to 200)	3/8 to 1
Features	<ul style="list-style-type: none"> • IP65 rated with M12 connector • Reverse flow can be detected • Repeatability $\pm 1.5\%$ full scale 	

Solenoid Valve

5 Port Solenoid Valve

Energy Savings

Long life



IP67 available

Series	Cv	Applicable cylinder size	Power consumption (W)
SY3000/5000	SY3000: 0.23 to 0.39	Up to 2-1/2" (63 mm)	0.35 W (standard)
	SY5000: 0.54 to 0.84		0.1 W (with power saving circuit)
Features	<ul style="list-style-type: none">• One valve series with many options• Plug in style with six manifold variations and 12 wiring configurations• Long life: 70 million cycles (rubber seal), 200 million cycles (metal seal)• Optional IP67 rated option available in 8 mounting configurations• Piping possible from top, side, bottom or mixed		

Solenoid Valve

5 Port Solenoid Valve

Energy Savings

Long life



IP67 available

Series	Cv (metal/rubber)	Applicable cylinder size	Power consumption
VQC1000	0.18/0.25	Up to 2" (50 mm)	1 W (standard) 0.5W (low voltage type)
VQC2000	0.60/0.80	Up to 3" (80 mm)	
VQC4000	1.7/2.0	Up to 5-1/2" (140mm)	
Features	• Six wiring options • Long life: 200 million cycles (VQC1000/2000), 100 million cycles (VQC4000) • Response time: 13ms (VQC1000), 20ms (VQC2000), 17ms (VQC4000) • Flexibility to add stations		

5 Port Solenoid Valve

Energy Savings

Long life



IP67 available

Series	Cv	Applicable cylinder size	Power consumption (W)
SV1000	0.24	Up to 1-1/2" (40mm)	0.6W (Standard) 0.65W (with light)
SV2000	0.46	Up to 2-1/2" (63mm)	
SV3000	0.91	Up to 4" (100mm)	
SV4000	1.3	Up to 5" (125mm)	
Features	• 4 position dual 3 port valves available to reduce length of manifold • Flexibility to add stations • Relay output module available for control of devices up to 110 VAC, 3A		

Solenoid Valve

3 Port Conveyor Valve

Unique Solution

Labor Saving



IP65

Series	Cv	Response time	Power consumption
VFD	0.1	ON: 14ms OFF: 5ms or less	0.62 W
Features	<ul style="list-style-type: none"> • 3-port direct operated poppet valve • 24 VDC or 110 VAC • Wide pressure range (0-72 psi) to handle pressure drops found on long conveyor lines using zero accumulation 		

High Frequency Valve

Fast Response



Ideal for
sorting applications

Series	VQJ01
Features	<ul style="list-style-type: none"> • Frequency of operation up to 1000 Hz (at 29 psi (0.2MPa)) • Expected life 1 billion cycles • Valve width 11 mm • Flow 4.2 scfm (120L/m), (at 58 psi (0.4 MPa)) • Available in body ported and base mounted manifold types up to 32 stations • Replaceable one-touch fitting assemblies • Response time/ON response 0.9 ±0.15ms

High Frequency Valve

Fast Response



Ideal for
sorting applications

Series	SX10
Features	<ul style="list-style-type: none"> • Frequency of operation up to 1000 Hz [at 36 psi (0.25MPa)] • Expected life up to 7 billion cycles • Valve width 9 mm • Flow 1.7 scfm (50 L/min), ±10% [at 36 psi (0.25MPa)] • Base mount and clip mount

Solenoid Valve

Direct Operated 2 Port Solenoid Valve

New Media Valve

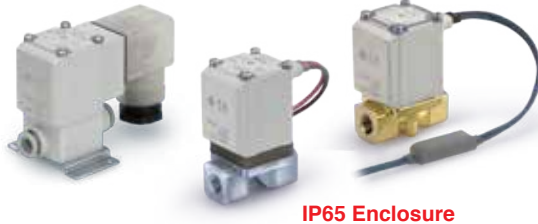


IP65 and NEMA 4X Enclosure

Series	VXN
Features	<ul style="list-style-type: none"> • For use with air, water, vacuum, and oil • 20% more flow compared to previous model • Compact and lightweight • Long life due to durable armature design • C37 (Brass) or stainless steel body options

Direct Operated 2 Port Solenoid Valve

New Media Valve



IP65 Enclosure

Series	VX2
Features	<ul style="list-style-type: none"> • Built-In Full Wave Rectifier which lowers heat, lowers power consumption and provides a quieter operation • Improved magnetic properties of the solenoid coil, flow, and pressure attributes resulting in less power to actuate • For use with vacuum, water, steam and oil applications: C37 (Brass) and SUS body types

Stand-By Valve

Energy Savings

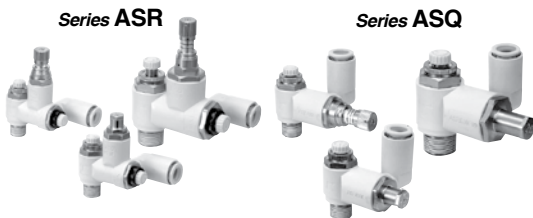
New Media Valve



Series	SBV
Operating Pressure Range	0.73 to 130 psi (0.005 to 0.9 MPa)
Stand-by Pressure Range	0.73 to 130 psi (0.005 to 0.9 MPa) [suggested 50 psi (0.35 MPa)]
Shut-off	Stand-by valve acts as a 2 port valve [(P out = 0 psi (0 MPa)]
Exhaust	Relieve the downstream pressure (optional)
Features	<p>By using the stand-by valve and a flowmeter (through its outputs alarm function), your machine can:</p> <ul style="list-style-type: none"> • Reduce the pressure directly • Operate as an automatic stand-by system (inputs of the machine are not needed)

Air Saving Valve

New Media Valve



Series ASR

Series ASQ

Series	ASR/ASQ
Features	<ul style="list-style-type: none"> • ASR = pressure valve with regulator, check valve, and controller • ASQ = flow control valve with quick supply, exhaust valve, and speed controller • Cut air consumption by operating the return stroke at reduced pressure • Offers easy piping • Set pressure can be fixed or variable

Vacuum

Multistage Ejector

Energy Savings



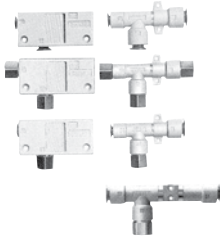
Series	ZL112/212
Features	<ul style="list-style-type: none"> • Suction flow rate increased 250% and air consumption reduced 20% with 3 stage diffuser construction (vs one stage type) • Series ZL212 has twice the flow rate of the ZL112 • Integration of vacuum gauge, vacuum digital switch, supply valve and break valve is possible

Vacuum

Vacuum Ejector

Energy Savings

Space Saving



Series	ZH
Features	<ul style="list-style-type: none"> • Compact and light weight • Box type (with built-in silencer) or body ported • Both One-touch and threaded connections can be combined on one ejector • Body can be mounted and secured

Vacuum Ejector In-line Type

Space Saving



Series	ZU
Features	<ul style="list-style-type: none"> • Space-saving ejector that can be installed in-line with the piping • Vacuum port supply port are located collinearly to facilitate piping • Lightweight construction achieved through the use of a resin body • Built-in one touch fittings (Suitable for copper-free and fluorine-free applications)

Vacuum Saving Valve

Energy Savings



Series	Thread size	Orifice size (mm)	Flow (scfm)
ZP2V	M5, M6, M8, R1/8, G1/8, NPT1/8	0.3 to 1.0	0.11 to 0.56
Features	When multiple vacuum pads are operated by one vacuum generator, and some are not holding the work piece, the reduction of vacuum pressure is restricted and the work piece can remain held by the rest of the pads.		

Vacuum Pad with Integrated Ejector

Energy Savings

Space Saving



Series	Max. Suction Flow	Max. Vacuum pressure (kPa)
ZHP	1.68 to 2.69 scfm	- 91 (-26.87 inHg)
Features	<ul style="list-style-type: none"> • Faster response time due to integrated vacuum ejector and pad • Energy efficient due to elimination of long hoses • "Lock plate construction" which makes pad replacement easy • Energy saving and high performance 2-stage ejector • Easy design and dimensioning due to integration of ejector and pad 	

Vacuum Ejector/Pump System

Energy Savings

Space Saving



Series	Nozzle size	Suction flow [L/m (ANR)]	Maximum no. of stations
ZB	ø0.3, 0.4, 0.5, 0.6	2, 3.5, 4.5, 7	12
Features	<ul style="list-style-type: none"> • Combines supply valve, release valve, vacuum break flow adjustment needle, suction filter and silencer • Easy one-touch operation to replace suction filter • Response time shortened by 28% compared to previous model • 21% increase in vacuum pressure capability compared to previous model • Quick response times (Valve = 5ms, vacuum breaking time = 14ms, vacuum response time = 28ms) 		

Vacuum

Vacuum Pad

Space Saving



Series	ZP3
Features	<ul style="list-style-type: none"> • Diameter size: ϕ1.5, 2, 3.5, 4, 6, 8, 10, 13, & 16 • Mounting styles: Male thread, female thread, barb fitting, One-touch fitting • More compact compared to previous model • Easy to mount • Easy part number identification

Vacuum Manifold

Energy Savings

Space Saving



Series	ZK2
Features	<ul style="list-style-type: none"> • Integrated vacuum ejector and vacuum pump system • 90% reduction in air consumption compared to previous model • When the vacuum pressure reaches the set value for suction, the digital vacuum switch with an energy saving function turns off the supply valve and the check valve keeps the vacuum. Then, when the vacuum pressure lowers to the set pressure for non-suction, the energy saving switch turns on the supply valves again, and keeps the vacuum to a certain level. • 58% weight reduction compared to previous model which make it ideal for EOA applications

Vacuum Flow

Unique solution



Series	ZH-X185
Features	<ul style="list-style-type: none"> • A discharge flow rate 4X the supply air can be generated • A suction flow rate 3X the supply air can be generated • Application examples: Blow away water droplets, vacuum away smoke during soldering, transfer fine particles away from work area

Non-Contact Suction Lift

Unique solution



Series	Outer body diameter (mm)	Operating pressure
XT661	ϕ 20, ϕ 40, ϕ 60, ϕ 80, ϕ 100	1.45 to 72 psi (0.01 to 0.5 MPa)
Features	<ul style="list-style-type: none"> • Generates lifting force with positive pressure so the workpiece is not touched • Application examples: <ul style="list-style-type: none"> Thin workpiece – Copper film, etc. Porous workpiece – Paper, Cardboard box, Lumber, etc. Workpiece with uneven and/or viscous surface 	

Energy Saving Ejector

Energy Savings



Series	ZM□□□-298
Features	<ul style="list-style-type: none"> • Monitors the vacuum level, and turns itself off when it doesn't need to operate • Ejector air consumption reduced by 90% (compared to conventional products)

Specialty Cylinder

Electric Actuator

Energy Savings

Space Saving



Series	Size	Stroke (mm)	Max. speed (mm/s)
LES	8, 16, 25	50 to 150	400
LEF	16, 25, 32, 40	100 to 2000	2000
LEJ	40, 63	200 to 3000	3000
LEL	25	100 to 1000	1000
LEY	16, 25, 32	30 to 500	500
LEYG	16, 25, 33	30 to 300	500
LEP	6, 10	25, 50, 75	350
LEH	10, 16, 20, 25, 32, 40	4 to 80	120 (open/close)
LER	10, 30, 50	Rotation angle 90°, 180°, 310° (LER10), 320°	420°/sec
Features	<ul style="list-style-type: none"> • Easy programming of controller for DC motors type • Fieldbus network gateways, including EtherNet/IP (DC controllers only) • Pulse input or positioning drivers with absolute encoder (AC motors only) • Compact and light weight • Power saving option • Long life: 10 million – 30 million depending on series • CE marked • Equipped with seal band to prevent foreign matter from entering (LEF) • Flexible mounting options • Drop prevention in case of power failure (LES, LEF, LEY, LEH) • High precision repeatability 		

Clean Series Electric Actuator

Energy Savings

Space Saving



Series	Stroke (mm)	Max. speed (mm/s)
LEY	0 to 800	up to 1000
Features	<ul style="list-style-type: none"> • Smooth surface - Washdown capable • Food compatible - can be used in the Food Industry • Forces: up to 430 Lbf (1910 N) • Repeatable positioning up to ± 0.02 mm 	

Servo and Step Motor Controller



Servo Motor Controller

Step Motor Controllers

Series	LECP6, JXC
Features	<ul style="list-style-type: none"> • Actual control • Specified force operation • Separated power supply • Return to origin • Alarm detection function • 64 step data • Area Output • Data input method • Easy mode and normal mode

Specialty Cylinder

Cost Effective Multi Position Cylinder

Labor Saving



IP65

Series	Size	Stroke	Speed
MPC	25, 40	25mm bore – 50mm stroke 40mm bore – 100mm stroke 40mm bore – 150mm stroke (Coming soon!)	25mm/sec
Features	<p>A pneumatic cylinder with integral position control needing only 0-10VDC or 4-20mA input signal. Position control is a continuous servo-loop, taking a feedback signal from the linear sensor. It will keep the target position by controlling pressure on the cylinder by way of opening and closing the solenoid valves. Unlike analog control for a servo valve, the solenoid valves mounted internally are a simple ON-OFF control. Cylinder speed is limited by the fixed orifice. There is no adjustment for acceleration or speed. If an external force stronger than the supply pressure is applied, the cylinder will return to the target position when the external force is removed. The cylinder has an output signal to give position feedback to a customer's controller, 1-5 V representing full stroke. Standard ball bushings protect against side load. Available with EtherNet/IP or Powerlink.</p>		

Air Preparation

Thermo-Chiller

Energy Efficient

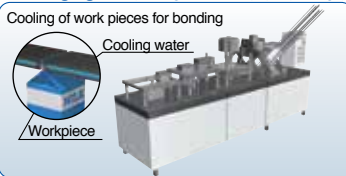


Series	HRS
Features	<ul style="list-style-type: none"> • UL/CE rated • Energy efficient design using hot gas bypass • Installation close to a wall on both sides is possible
Specifications	<ul style="list-style-type: none"> • Cooling capacity from 1200 watts to 14,500 watts • Temperature stability $\pm 0.1^{\circ}\text{C}$ • Serial communication (RS232/RS485) and contact I/O are standard • Global power, all HRS chillers are dual rated 50/60Hz

Thermo-Chiller



Packaging line (sealing of film and paper package)



Series	HRZ
Features	<ul style="list-style-type: none"> • Temperature stability $\pm 0.18^{\circ}\text{F}$ ($\pm 0.1^{\circ}\text{C}$) and temperature range from -4 to 194°F (-20 to $+90^{\circ}\text{C}$) • Double inverter type is also available, saving energy more effectively through use of a DC inverter compressor and an inverter pump • Conforms to UL

Air Preparation

Air Preparation - "Smart" FRL

Energy Savings



Corrosion resistant
epoxy coated option available!

Series	FRL	
Features	Smart FRL <ul style="list-style-type: none"> Standard AC series with pop-up indicator 	Smartest FRL <ul style="list-style-type: none"> Metal bowls protect against damage. Optional epoxy coated bowls for wash-down Digital differential pressure gauges to indicate when filter changes are required Regulator with digital pressure switch prevents over-pressurization by operators Combination quick-dump, soft start, lock out/tag out valve to remove pressure when machines are idle
	Smarter FRL <ul style="list-style-type: none"> Metal bowls protect against damage Regulator with digital pressure switch prevents over-pressurization by operators Differential pressure gauges ensure consistent air quality and warn you when filter changes are needed Combination quick-dump, soft start, lock out/tag out valve to remove pressure when machines are idle 	

Filtration

Unique solution



Series	AFF
Features	<ul style="list-style-type: none"> Particle, water, oil, and odor removal Particle – to 1 μm (99.9%) Water – 99% liquid removal Integral auto drains available Flow rate to 512 scfm

Precision Regulator

Energy Savings



Series	IR
Features	<ul style="list-style-type: none"> Air consumption is reduced with a new original structure High flow rate: Up to approx. twice (Compared to the current SMC Product) No fixed throttle in the new design Mounting is interchangeable with the current SMC model Exhaust (EXH) directions can be selected.

Air Preparation

Membrane Air Dryer

Energy Savings



Series	IDG
Features	<ul style="list-style-type: none"> Dew points as low as -76°F (-60°C) (atmospheric) No power required Modular connectivity with prefilter

Refrigerated Air Dryer

Long life



Series	IDFB
Features	<ul style="list-style-type: none"> Environmentally friendly R134a/R407C refrigerant Simple control system Stainless steel heat exchanger for long life cUL certified Pressure dew point to 37°F, flows to 400 SCFM 50Hz and CE marked units also available

Diagnostic Products

Automatic Leak Detection

Energy Savings



Series	ALDS
Features	<ul style="list-style-type: none"> Detects air leakages when they occur - even on a daily basis Confirms the exact value of the leak Provides maintenance personnel with a detailed report on where the leaks are located without the need to detect leaks in individual components Operate an automatic test cycle outside production to detect leakages Ability to integrate in the machine's software without the need for any external supervision system - scad, etc.

Manual Leak Detection

Energy Savings



Series	MLDS
Features	<ul style="list-style-type: none"> Portable air leakage measurement box Measures from 50 - 500 liters per minute IP67 case Rechargeable battery pack Contact SMC's Energy Saving Team for more details

Diagnostic Products

Data Logger

Energy Savings



Series	Data Logger
Features	<ul style="list-style-type: none"> Monitors pressure and flow characteristics from compressed air systems Software allows a detailed report of pressure/flow fluctuations throughout the system Can record 8 channels at once DataQ acquisition equipment packaged for rough service Contact SMC's Energy Saving Team for more details

Air Management System - AirMaS™ Technology

Energy Savings



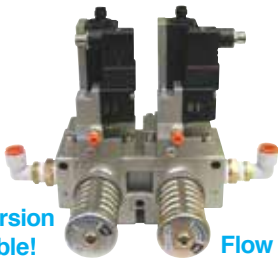
Series	Air Management System
Features	<ul style="list-style-type: none"> LOTO isolation (to OSHA standards) Point to use Filtration sized to suit minimum and maximum flow rate Flow monitoring Inlet pressure monitoring Slow start and dump valve Volume control system Process pressure monitoring

Safety Related

Category 3 & 4 Safety Shut-off and Exhaust Valve

Long Life

g[®] **AL** US



Smaller
Series VP version
now available!

Flow rate: 9 Cv

Series	VG342
Features	<ul style="list-style-type: none"> 3/4 NPT or metric ports 24VDC Operating Pressure: 36 to 101 psi External pilot for low operating pressures M12 connector for signal feedback Monitoring through certified safety switch Lifetime: 900,000 cycles EN ISO 13849-1

Pilot operated check valve with direct monitoring

New Product



Series	XT34-303
Features	<p>Pilot operated check valve with direct monitoring meeting safe stop Category 3 particularly with the vertical installation of actuators which are subject to heavy loads, pilot operated check valves should be screwed Directly into cylinder.</p>

Safety Zone Manifold



Series	Safety Zone Manifold
Features	<ul style="list-style-type: none"> Allows maintenance without disrupting production. <ul style="list-style-type: none"> Main valve position when the valve is OFF: Signal output Main valve position when the valve is ON: No signal output Can be used as an interlock signal M8/M12 connector available

Safety Related

Cylinder with Built-In Magnet and End Lock



C(D)BA2, Air Cylinder, Double Acting, Single Rod, End Lock

Series CBA2 End Lock version of the light weight tie rod air cylinder. End of stroke locking mechanism locks the cylinder in place in case of a loss of air. Locks can be ordered for the extend stroke, retract stroke or both. The CA2 is available in a large variety of options that will make them suitable for many different applications. A variety of auto switches are available for mounting, including compact switches and magnetic field resistant switches. The CA2 is available in 40, 50, 63, 80 and 100 bores sizes, and is RoHS compliant

Series	CBA2
Features	<ul style="list-style-type: none"> • CBA2, End lock cylinder • Bores: ø40, ø50, ø63, ø80, ø100 • Proof pressure: 1.5MPa • Cushion: interchangeable • Variety of mountings available • Auto switch capable

Speed Control Valve with Pilot Operated Check Valve



Series ASP is a speed controller with integrated pilot check valve, permitting control of cylinder speeds and temporary intermediate stops.

ASP is standard with electroless nickel plating on all brass parts and allows 360 degree freedom for tube mounting direction.

Series	ASP-X352
Features	<ul style="list-style-type: none"> • Pilot check speed control with residual pressure relief valve • One-touch connection for supply air only • Universal type with one-touch fitting • Uni-fit thread form

Other Products

Reverse Pulse Jet Valve



7 million cycle or more
(Conventional Ratio 10 times)



Service life is improved to 2-3X of competitor's valve due to integrated high strength elastomer diaphragm

Innovative Solution

Energy Savings

Series	JSXFA
Features	<ul style="list-style-type: none"> • Long Service Life • Compression Fitting Connection • Improved Flow Characteristics • High Output, Energy Saving

Speed Controller with Visual Indicator



Series	AS-FS
Features	<ul style="list-style-type: none"> • Numerical indication of flow rate adjustments visible in handle to reduce flow setting time and setting errors • Electroless nickel plating on metal parts is standard • Indicator window rotates 180° for 2 choices in viewing the numerical setting

Air Blow Gun

Energy Savings



Extension nozzle
Available in 100, 150, 300 and 600mm lengths

Series	VMG
Features	<ul style="list-style-type: none"> • Made of shock resistant resin • Uses 20% less energy than conventional air guns • Not affected by fluctuations in supply pressure • Maintains effective impact pressure at low inlet pressure

Global Manufacturing, Distribution and Service Network

Worldwide Subsidiaries

EUROPE

AUSTRIA SMC Pneumatik GmbH (Austria)	LATVIA SMC Pneumatics Latvia SIA
BELGIUM SMC Pneumatics N.V./S.A.	LITHUANIA UAB "SMC Pneumatics"
BULGARIA SMC Industrial Automation Bulgaria EOOD	NETHERLANDS SMC Pneumatics B.V.
CROATIA SMC Industrijska Automatika d.o.o.	NORWAY SMC Pneumatics Norway AS
CZECH REPUBLIC SMC Industrial Automation CZ s.r.o.	POLAND SMC Industrial Automation Polska Sp. z o.o.
DENMARK SMC Pneumatik A/S	ROMANIA SMC Romania S.r.l.
ESTONIA SMC Pneumatics Estonia	RUSSIA SMC Pneumatik LLC.
FINLAND SMC Pneumatics Finland OY	SLOVAKIA SMC Priemyselná Automatizácia, Spol s.r.o.
FRANCE SMC Pneumatique S.A.	SLOVENIA SMC Industrijska Avtomatika d.o.o.
GERMANY SMC Pneumatik GmbH	SPAIN / PORTUGAL SMC España, S.A.
GREECE SMC Hellas EPE	SWEDEN SMC Pneumatics Sweden AB
HUNGARY SMC Hungary Ipari Automatizálási Kft.	SWITZERLAND SMC Pneumatik AG
IRELAND SMC Pneumatics (Ireland) Ltd.	TURKEY SMC Pnömatik Sanayi Ticaret ve Servis A.Ş.
ITALY SMC Italia S.p.A.	UK SMC Pneumatics (U.K.) Ltd.
KAZAKHSTAN LLP "SMC Kazakhstan"	

ASIA / OCEANIA

AUSTRALIA SMC Pneumatics (Australia) Pty. Ltd.
CHINA SMC (China) Co., Ltd. SMC Pneumatics (Guangzhou) Ltd.
HONG KONG SMC Pneumatics (Hong Kong) Ltd.
INDIA SMC Pneumatics (India) Pvt. Ltd.
INDONESIA PT. SMC Pneumatics Indonesia
JAPAN SMC Corporation
MALAYSIA SMC Pneumatics (S.E.A.) Sdn. Bhd.
NEW ZEALAND SMC Pneumatics (N.Z.) Ltd.
PHILIPPINES Shoketsu SMC Corporation
SINGAPORE SMC Pneumatics (S.E.A.) Pte. Ltd.
SOUTH KOREA SMC Pneumatics Korea Co., Ltd.
TAIWAN SMC Pneumatics (Taiwan) Co., Ltd.
THAILAND SMC (Thailand) Ltd.
UNITED ARAB EMIRATES SMC Pneumatics Middle East FZE

VIETNAM SMC Pneumatics (VN) Co., Ltd
--

AFRICA

SOUTH AFRICA SMC Pneumatics (South Africa) Pty Ltd
--

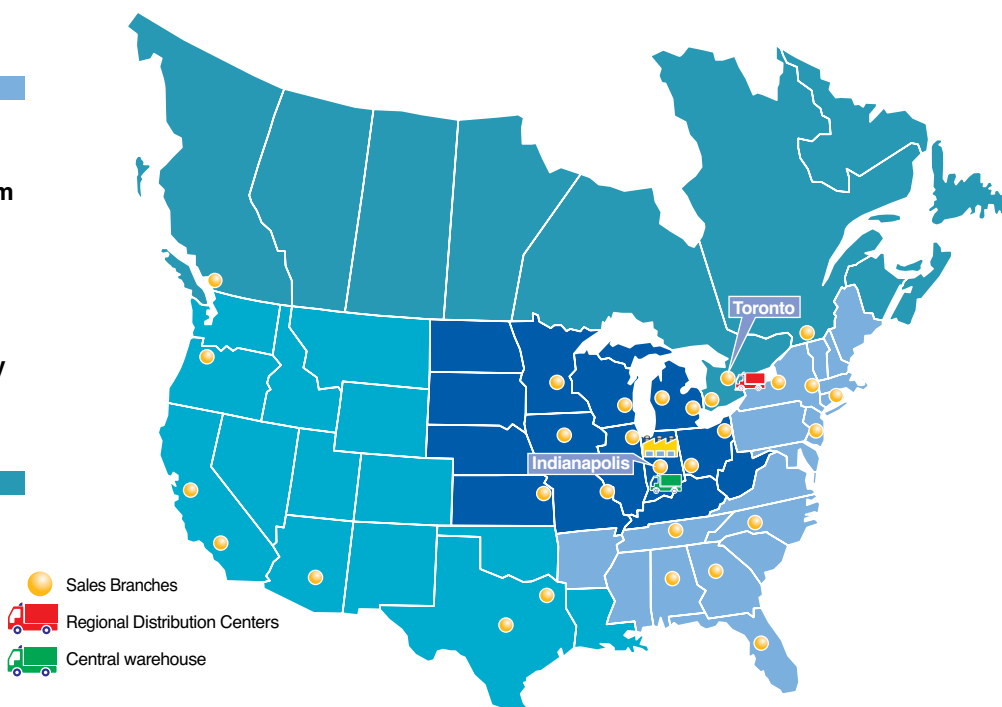
NORTH, CENTRAL & SOUTH AMERICA

ARGENTINA SMC Argentina S.A.
BOLIVIA SMC Pneumatics Bolivia S.R.L.
BRAZIL SMC Pneumáticos do Brasil Ltda.
CANADA SMC Pneumatics (Canada) Ltd.
CHILE SMC Pneumatics (Chile) S.A.
COLOMBIA SMC Colombia Sucursal de SMC Chile, S.A.
MEXICO SMC Corporation (Mexico) S.A. de C.V.
PERU SMC Corporation Peru S.A.C.
USA SMC Corporation of America
VENEZUELA SMC Neumatica Venezuela S.A.

U.S. & Canadian Sales Offices

WEST
Austin
Dallas
Los Angeles
Phoenix
Portland
San Jose
CENTRAL
Chicago
Cincinnati
Cleveland
Detroit
Des Moines
Grand Rapids
Indianapolis
Kansas City
Milwaukee
Minneapolis
St. Louis

EAST
Albany
Atlanta
Birmingham
Boston
Charlotte
Knoxville
Nashville
New Jersey
Rochester
Tampa
CANADA
Vancouver
Toronto
Windsor
Montreal



SMC Corporation of America
10100 SMC Blvd., Noblesville, IN 46060
www.smcusa.com

SMC Pneumatics (Canada) Ltd.
www.smcpcneumatics.ca

(800) SMC.SMC1 (762-7621)
e-mail: sales@smcusa.com
International inquiries: www.smcworld.com

