

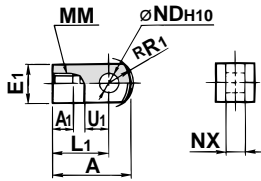
# Series RQ

## Accessories

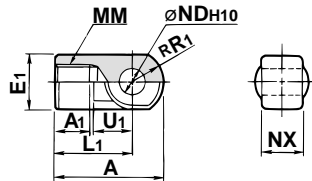
### Single Knuckle Joint

For I-G02, I-G03

For I-G04, I-G05



Material: Carbon steel

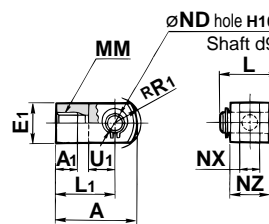


Material: Cast iron

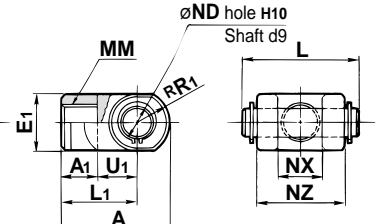
### Double Knuckle Joint

For Y-G02, Y-G03

For Y-G04, Y-G05



Material: Carbon steel



Material: Cast iron

| Part no. | Applicable bore size (mm) | A  | A1   | E1  | L1 | MM         | RR1  | U1   | ND                                | NX                                 |
|----------|---------------------------|----|------|-----|----|------------|------|------|-----------------------------------|------------------------------------|
| I-G02    | 20                        | 34 | 8.5  | □16 | 25 | M8 x 1.25  | 10.3 | 11.5 | 8 <sup>+0.058</sup> <sub>0</sub>  | 8 <sup>-0.2</sup> <sub>-0.4</sub>  |
| I-G03    | 25                        | 41 | 10.5 | □20 | 30 | M10 x 1.25 | 12.8 | 14   | 10 <sup>+0.058</sup> <sub>0</sub> | 10 <sup>-0.2</sup> <sub>-0.4</sub> |
| I-G04    | 32, 40                    | 42 | 14   | ∅22 | 30 | M14 x 1.5  | 12   | 14   | 10 <sup>+0.058</sup> <sub>0</sub> | 18 <sup>-0.3</sup> <sub>-0.5</sub> |
| I-G05    | 50, 63                    | 56 | 18   | ∅28 | 40 | M18 x 1.5  | 16   | 20   | 14 <sup>+0.070</sup> <sub>0</sub> | 22 <sup>-0.3</sup> <sub>-0.5</sub> |
| I-G08    | 80                        | 71 | 21   | ∅38 | 50 | M22 x 1.5  | 21   | 27   | 18 <sup>+0.070</sup> <sub>0</sub> | 28 <sup>-0.3</sup> <sub>-0.5</sub> |
| I-G10    | 100                       | 79 | 21   | ∅44 | 55 | M26 x 1.5  | 24   | 31   | 22 <sup>+0.084</sup> <sub>0</sub> | 32 <sup>-0.3</sup> <sub>-0.5</sub> |

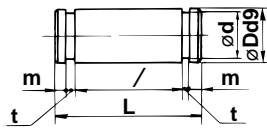
mm

| Part no. | Applicable bore size (mm) | A  | A1   | E1  | L1 | MM         | RR1  | U1   | ND                                | NX                                 | NZ | L    | Applicable pin no. |
|----------|---------------------------|----|------|-----|----|------------|------|------|-----------------------------------|------------------------------------|----|------|--------------------|
| Y-G02    | 20                        | 34 | 8.5  | □16 | 25 | M8 x 1.25  | 10.3 | 11.5 | 8 <sup>+0.058</sup> <sub>0</sub>  | 8 <sup>+0.4</sup> <sub>+0.2</sub>  | 16 | 21   | IY-G02             |
| Y-G03    | 25                        | 41 | 10.5 | □20 | 30 | M10 x 1.25 | 12.8 | 14   | 10 <sup>+0.058</sup> <sub>0</sub> | 10 <sup>+0.4</sup> <sub>+0.2</sub> | 20 | 25.6 | IY-G03             |
| Y-G04    | 32, 40                    | 42 | 16   | ∅22 | 30 | M14 x 1.5  | 12   | 14   | 10 <sup>+0.058</sup> <sub>0</sub> | 18 <sup>+0.5</sup> <sub>+0.3</sub> | 36 | 41.6 | IY-G04             |
| Y-G05    | 50, 63                    | 56 | 20   | ∅28 | 40 | M18 x 1.5  | 16   | 20   | 14 <sup>+0.070</sup> <sub>0</sub> | 22 <sup>+0.5</sup> <sub>+0.3</sub> | 44 | 50.6 | IY-G05             |
| Y-G08    | 80                        | 71 | 23   | ∅38 | 50 | M22 x 1.5  | 21   | 27   | 18 <sup>+0.070</sup> <sub>0</sub> | 28 <sup>+0.5</sup> <sub>+0.3</sub> | 56 | 64   | IY-G08             |
| Y-G10    | 100                       | 79 | 24   | ∅44 | 55 | M26 x 1.5  | 24   | 31   | 22 <sup>+0.084</sup> <sub>0</sub> | 32 <sup>+0.5</sup> <sub>+0.3</sub> | 64 | 72   | IY-G10             |

mm

\*Knuckle pin and snap ring are included.

### Knuckle Pin (common with double clevis pin)

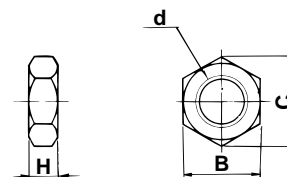


Material: Carbon steel

| Part no. | Applicable bore size (mm) | D                                      | L    | d    | /    | m    | t    | Snap ring          |
|----------|---------------------------|--|------|------|------|------|------|--------------------|
| IY-G02   | 20                        | 8 <sup>-0.040</sup> <sub>-0.076</sub>  | 21   | 7.6  | 16.2 | 1.5  | 0.9  | C8 type for pivot  |
| IY-G03   | 25                        | 10 <sup>-0.040</sup> <sub>-0.076</sub> | 25.6 | 9.6  | 20.2 | 1.55 | 1.15 | C10 type for pivot |
| IY-G04   | 32,40                     | 10 <sup>-0.040</sup> <sub>-0.076</sub> | 41.6 | 9.6  | 36.2 | 1.55 | 1.15 | C10 type for pivot |
| IY-G05   | 50,63                     | 14 <sup>-0.050</sup> <sub>-0.093</sub> | 50.6 | 13.4 | 44.2 | 2.05 | 1.15 | C14 type for pivot |
| IY-G08   | 80                        | 18 <sup>-0.050</sup> <sub>-0.093</sub> | 64   | 17   | 56.2 | 2.55 | 1.35 | C18 type for pivot |
| IY-G10   | 100                       | 22 <sup>-0.065</sup> <sub>-0.117</sub> | 72   | 21   | 64.2 | 2.55 | 1.35 | C22 type for pivot |

mm

### Rod End Nut



Material: Carbon steel

| Part no. | Applicable bore size (mm) | d          | H  | B  | C    |
|----------|---------------------------|------------|----|----|------|
| NT-02    | 20                        | M8 x 1.25  | 5  | 13 | 15.0 |
| NT-03    | 25                        | M10 x 1.25 | 6  | 17 | 19.6 |
| NT-04    | 32, 40                    | M14 x 1.5  | 8  | 22 | 25.4 |
| NT-05    | 50, 63                    | M18 x 1.5  | 11 | 27 | 31.2 |
| NT-08    | 80                        | M22 x 1.5  | 13 | 32 | 37.0 |
| NT-10    | 100                       | M26 x 1.5  | 16 | 41 | 47.3 |

mm