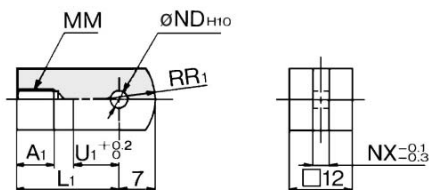


## Accessory Bracket Dimensions

### Single Knuckle Joint

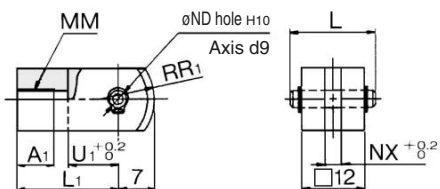


Material: Rolled steel

Part no.	Applicable bore (mm)	A <sub>1</sub>	L <sub>1</sub>	MM	ND <sup>H10</sup>	NX	R <sub>1</sub>	U <sub>1</sub>
I-J010B	10	8	21	M4 x 0.7	3.3 <sup>+0.048</sup> <sub>-0.060</sub>	3.1	8	9
I-J016B	16	8	25	M5 x 0.8	5.3 <sup>+0.048</sup> <sub>-0.060</sub>	6.4	12	14

### Double Knuckle Joint

\* Knuckle pin and set ring are shipped together.



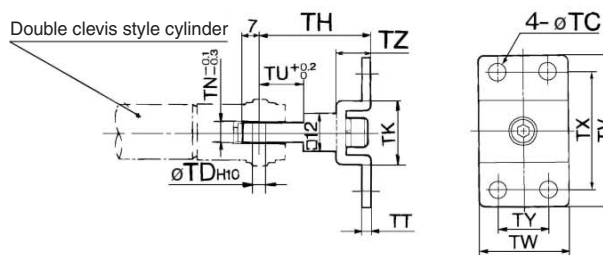
Material: Rolled steel

Part no.	Applicable bore (mm)	A <sub>1</sub>	L	L <sub>1</sub>	MM
Y-J010B	10	8	15.2	21	M4 x 0.7
Y-J016B	16	11	16.6	21	M5 x 0.8

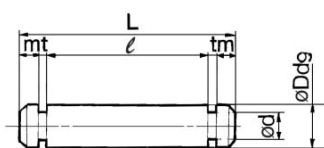
Part no.	ND <sub>d9</sub>	ND <sup>H10</sup>	NX	R <sub>1</sub>	U <sub>1</sub>
Y-J010B	3.3 <sup>-0.030</sup> <sub>-0.060</sub>	3.3 <sup>+0.048</sup> <sub>0</sub>	3.2	8	10
Y-J016B	5.3 <sup>-0.030</sup> <sub>-0.060</sub>	5.3 <sup>+0.048</sup> <sub>0</sub>	6.5	12	10

### T-bracket



Part no.	Applicable bore (mm)	TC	TD <sup>H10</sup>	TH	TK	TN	TT	TU	TV	TW	TX	TY	TZ
CJ-T010B	10	4.5	3.3 <sup>+0.048</sup> <sub>-0.060</sub>	29	18	3.1	2	9	40	22	32	12	8
CJ-T016B	16	5.5	5 <sup>+0.048</sup> <sub>-0.060</sub>	35	20	6.4	2.3	14	48	28	38	16	10

### Clevis Pin

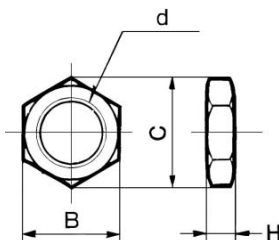


Material: Stainless steel

Part no.	Applicable bore (mm)	Dd <sub>9</sub>	d	L	ℓ	m	t	Applicable snap ring
CD-J010	10	3.3 <sup>-0.030</sup> <sub>-0.060</sub>	3	15.2	12.2	1.2	0.3	Type C 3.2
CD-Z015	16	5.3 <sup>-0.030</sup> <sub>-0.060</sub>	4.8	22.7	18.3	1.5	0.7	Type C 5
CD-JA010*	10	3.3 <sup>-0.030</sup> <sub>-0.060</sub>	3	18.2	15.2	1.2	0.3	Type C 3.2

\* For ø10 double clevis style, with air cushion and built-in speed controller.

### Mounting Nut

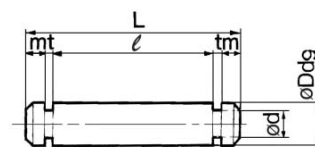


Material: Brass

Part no.	Applicable bore (mm)	B	C	d	H
SNJ-006B	6	8	9.2	M6 x 1.0	4
SNJ-010B	10	11	12.7	M8 x 1.0	4
SNJ-016B	16	14	16.2	M10 x 1.0	4
SNKJ-016B*	16	17	19.6	M12 x 1.0	4

\* For ø16 non-rotating type. (Use SNJ-016B for ø10 non-rotating type.)

### Knuckle Pin

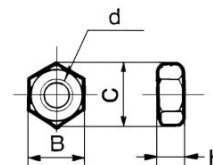


Material: Stainless steel

Part no.	Applicable bore (mm)	Dd <sub>9</sub>	d	L	ℓ	m	t	Applicable snap ring
CD-J010	10	3.3 <sup>-0.030</sup> <sub>-0.060</sub>	3	15.2	12.2	1.2	0.3	Type C 3.2
IY-J015	16	5.3 <sup>-0.030</sup> <sub>-0.060</sub>	4.8	16.6	12.2	1.5	0.7	Type C 5

\* For size ø10, clevis pin is diverted.

### Rod End Nut



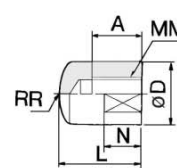
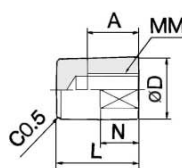
Material: Iron

Part no.	Applicable bore (mm)	B	C	d	H
NTJ-006A	6	5.5	6.4	M3 x 0.5	2.4
NTJ-010A	10	7	8.1	M4 x 0.7	3.2
NTJ-015A	16	8	9.2	M5 x 0.8	4

### Rod End Cap

Flat type/CJ-CF□□□

Round type/CJ-CR□□□



Material: Polyacetal

Part no.		Applicable bore (mm)	A	D	L	MM	N	R	W
Flat type	Round type								
CJ-CF006	CJ-CR006	6	6	8	11	M3 x 0.5	5	8	6
CJ-CF010	CJ-CR010	10	8	10	13	M4 x 0.7	6	10	8
CJ-CF016	CJ-CR016	16	10	12	15	M5 x 0.8	7	12	10

- CJ1
- CJP
- CJ2**
- CM2
- CG1
- MB
- MB1
- CA2
- CS1
- C76
- C85
- C95
- CP95
- NCM
- NCA
- D-
- X
- 20-
- Data