

! Contact our sales office for delivery dates and prices as this is a special model.

Specialized Product

Point to Group
P.G. information

Compact Plate Cylinder

MDUB□-X2732



Features

Compact

Overall length reduced by up to 22 mm and weight reduced by up to 13% compared with the current MU series

* Compact body: the mounting screw and piping port are one size smaller than the current product.

Overall length: Max. 22 mm shorter

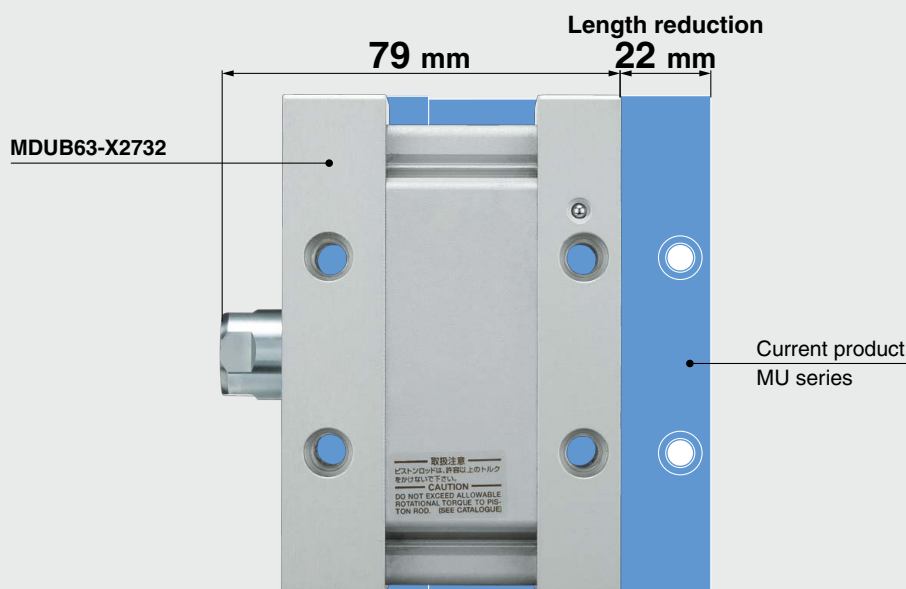
(Compared with the current MU series, 5 stroke) [mm]

Size	MDUB□-X2732	Current product MU	Length reduction
Equiv. ø50 piston area	78	97	19
Equiv. ø63 piston area	79	101	22

Weight: Max. 13% lighter

(Compared with the current MU series, 5 stroke) [kg]

Size	MDUB□-X2732	Current product MU	Reduction rate [%]
Equiv. ø50 piston area	0.70	0.78	10
Equiv. ø63 piston area	1.05	1.20	13



Specifications

Size	Equiv. ø50 piston area	Equiv. ø63 piston area
Action	Double acting	
Operating pressure range	0.05 to 0.5 MPa	
Proof pressure	0.7 MPa	
Speed	50 to 500 mm/sec	
Stroke [mm]	5, 10, 15, 20, 25, 30, 35, 40, 45, 50, 75, 100	
Stroke tolerance	+1.4/0 mm	
Ambient and operating air temperatures	-10 to 60°C (No freezing)	
Cushion	Rubber bumper	
Piping port	Rc1/8	
Allowable kinetic energy	0.53 J	0.93 J



Caution

To ensure the safest possible operation of this product, please be sure to thoroughly read the "Safety Instructions" in our "Best Pneumatics" catalog before use.

SMC Corporation 4-14-1, SOTO-KANDA, CHIYODA-KU, TOKYO 101-0021, JAPAN URL: <http://www.smcworld.com>

©2018 SMC Corporation All Rights Reserved



SP172X-015E
P: WU

How to Order

MDUB 50 - 50 MZ - M9BW □ - X2732

Built-in magnet for auto switch

Size

50	Equiv. ø50 piston area
63	Equiv. ø63 piston area

Cylinder stroke

50	5, 10, 15, 20, 25, 30,
63	35, 40, 45, 50, 75, 100

Rod end type
(Same as the standard type)

Number of auto switches
(Same as the standard type)

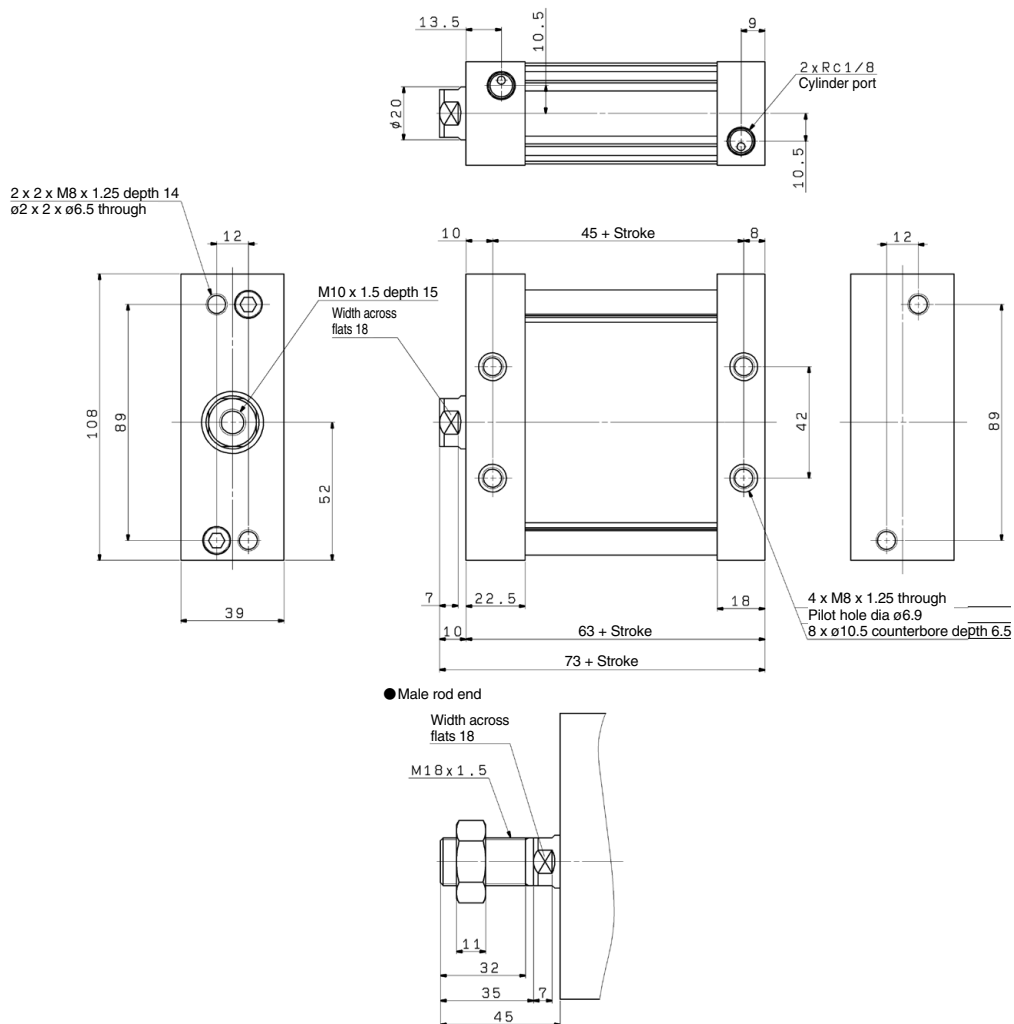
Auto switch
(Reed auto switches cannot be mounted.)
* Refer to Table 1 for minimum stroke for auto switch mounting.

Table 1. Minimum Stroke for Auto Switch Mounting

Number of auto switches mounted	D-M9□ D-M9□W D-M9□A	D-M9□V D-M9□WV D-M9□AV
1	20	5
2	20	5

Dimensions

MDUB50-□□Z-□-X2732



Dimensions

MDUB63-□□Z-□-X2732

