

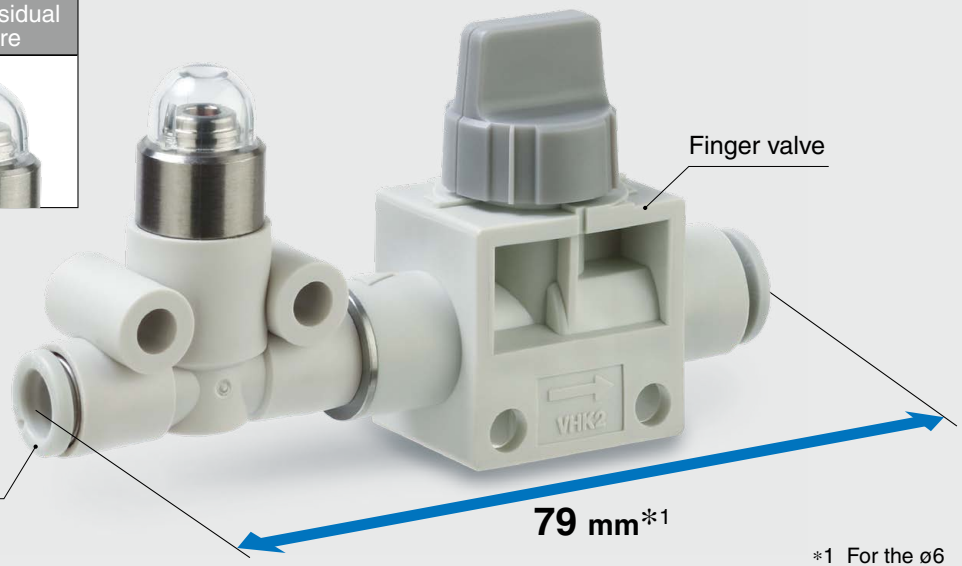
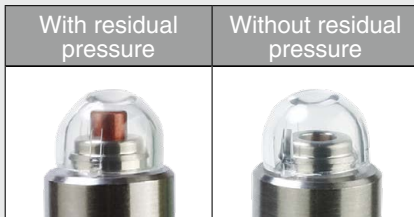
! Contact our sales office for delivery dates and prices as this is a special model.

Specialized Product **P.G.** Point to Group information

Finger Valve with Pneumatic Indicator

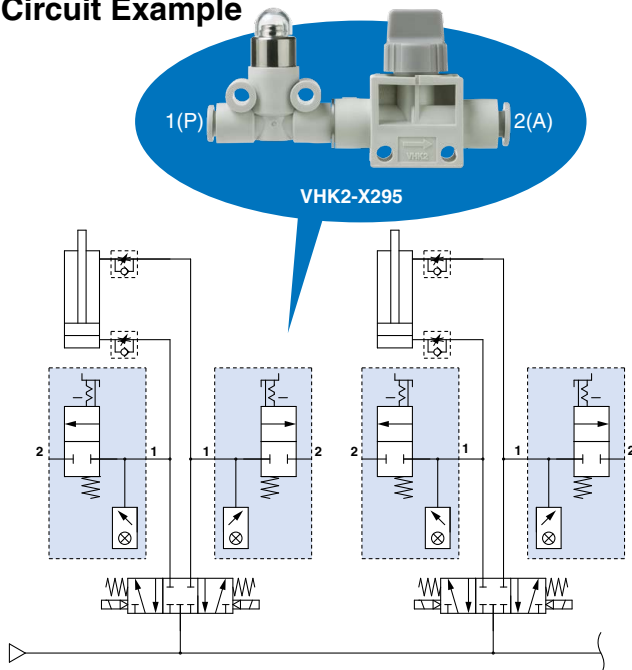
2-Port VHK2-X295

Features Integrated pneumatic indicator and finger valve
Space saving, Reduced piping labor
 Exhaust and visual confirmation of residual pressure between the valve and the cylinder is possible.



*1 For the ø6

Circuit Example



Pneumatic indicator XT69-38-□□

* Please contact SMC for details.



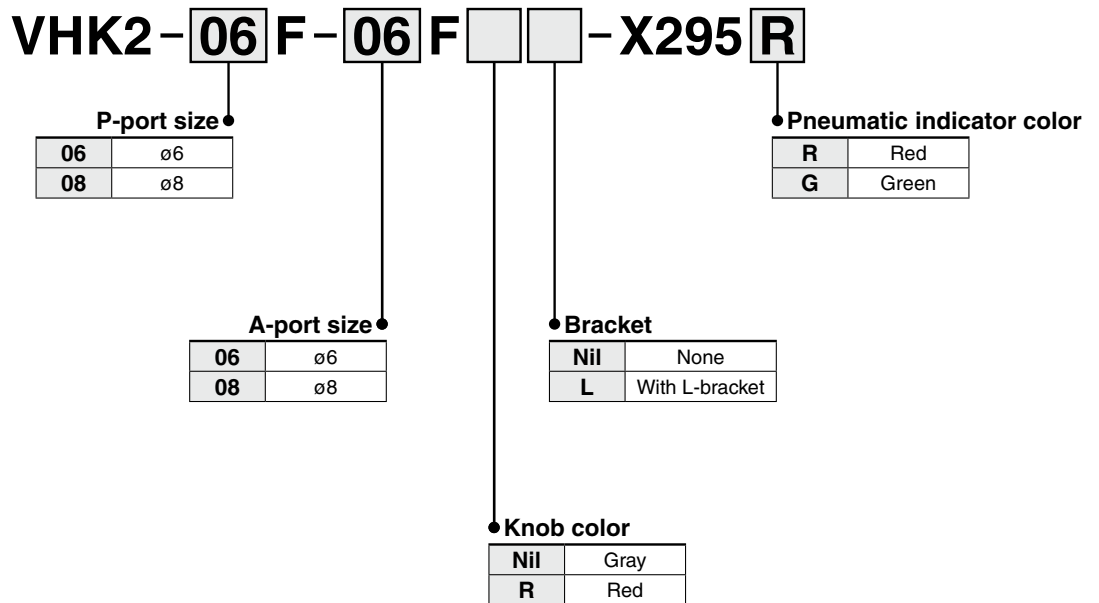
Caution To ensure the safest possible operation of this product, please be sure to thoroughly read the "Safety Instructions" in our "Best Pneumatics" catalog before use.

SMC Corporation 4-14-1, SOTO-KANDA, CHIYODA-KU, TOKYO 101-0021, JAPAN URL: <http://www.smcworld.com>
 ©2018 SMC Corporation All Rights Reserved



SP183X-002E
 P: WT

How to Order



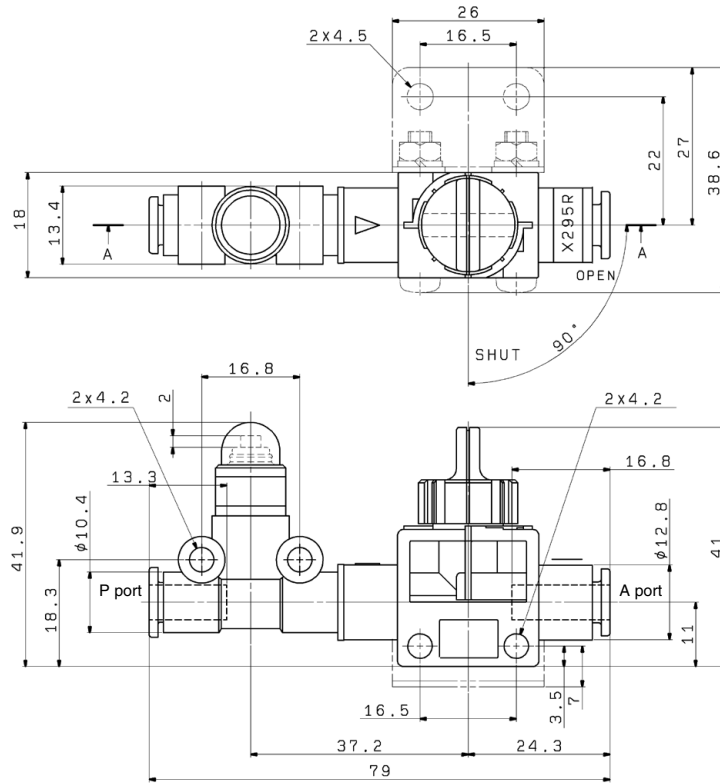
Specifications

Fluid	Air
Maximum operating pressure	0.8 MPa
Minimum operating pressure	0.05 MPa
Ambient and operating air temperatures	0 to 60°C

Dimensions

[mm]

VHK2-06F-06F-□□-X295□



VHK2-08F-08F-□□-X295□

