

# 4 Port Solenoid Valve Common Specifications

# Series SJ2000/3000



## Manifold Specifications

| Model  |                    | D-sub connector   | Flat ribbon cable   |   |  | Serial wiring        |                       | Individual wiring |             |
|--|--------------------|---|---|---|--|----------------------|-----------------------|-------------------|-------------|
|  |                    | Type 60F  | Type 60P  | Type 60PG<br>Type 60J<br>Type 60G   | Type 60PH  | Type 60S□<br>(EX180) | Type 60S6B<br>(EX510) | Type 60           |             |
| Manifold type  |                    | Plug-in, Connector type                                       |   |   |  |                      |                       |                   | Non-plug-in |
| 1(P: SUP), 3/5(E: EXH)   |                    | Common SUP, EXH   |   |   |  |                      |                       |                   |             |
| Valve stations   |                    | 2 to 24 stations  |   | 2 to 18 stations<br>(Type PG)<br>2 to 16 stations<br>(Type J, Type G)   | 2 to 8 stations  | 2 to 32 stations     | 2 to 16 stations      | 2 to 20 stations  |             |
| Applicable connector   |                    | D-sub connector<br>Conforming to<br>MIL-C-24308<br>JIS-X-5101 | Flat ribbon cable<br>connector<br>Socket: 26 pins<br>MIL type<br>with strain relief<br>Conforming to<br>MIL-C-83503 | Flat ribbon cable<br>connector<br>Socket: 20 pins<br>MIL type<br>with strain relief<br>Conforming to<br>MIL-C-83503 | Flat ribbon cable<br>connector<br>Socket: 10 pins<br>MIL type<br>with strain relief<br>Conforming to<br>MIL- C-83503 | —                    | —                     | —                 |             |
| Internal wiring  |                    | Non-polar, +COM   |   |   |  |                      |                       |                   |             |
| 4(A), 2(B) port<br>piping spec.  |                    | Location  | Valve   |   |  |                      |                       |                   |             |
|  |                    | Direction   | Horizontal, Upward, Downward (Using elbow fittings for upward or downward)  |   |  |                      |                       |                   |             |
| Port size  | 1(P), 3/5(E) port  |   | C6, C8, N7, N9 (Inch size elbow fitting is not available.)  |   |  |                      |                       |                   |             |
|  | 4(A), 2(B)<br>port | SJ2000  | C2, C4, N1, N3, M3  |   |  |                      |                       |                   |             |
|  |                    | SJ3000  | C2, C4, C6, N1, N3, N7, M5  |   |  |                      |                       |                   |             |
| Weight W (g)<br><div>n: Number of SUP/EXH blocks<br/>m: Weight of DIN rail</div> |                    | W = 51n + m + 133   |   |   |  |                      |                       |                   |             |

Note 1) When many valves are operated simultaneously, use B type (SUP/EXH both sides), applying pressure to the 1(P) ports on both sides and exhaust from the 3/5(E) ports on both sides.

Note 2) The weight W is the value for the D-sub connector manifold only with internal pilot, SUP/EXH block straight fittings specifications. To obtain the weight with solenoid valves attached, add the solenoid valve weights given on page 3 for the appropriate number of stations. Refer to page 61 for the weight of DIN rail. (Please contact SMC for the weight of external pilot specifications, elbow fittings.)

## Flow Characteristics

### SJ2000

| Port size      |                | Flow characteristics         |      |      |                              |      |      |
|----------------|----------------|------------------------------|------|------|------------------------------|------|------|
| 1(P)<br>3/5(E) | 4, 2<br>(A, B) | 1→2/4 (P→A/B)                |      |      | 4/2→3/5 (A/B→E)              |      |      |
|                |                | C [dm <sup>3</sup> /(s·bar)] | b    | Cv   | C [dm <sup>3</sup> /(s·bar)] | b    | Cv   |
| C8             | C2             | 0.13                         | 0.55 | 0.04 | 0.13                         | 0.50 | 0.04 |
|                | C4             | 0.33                         | 0.16 | 0.08 | 0.36                         | 0.13 | 0.08 |
|                | M3             | 0.18                         | 0.52 | 0.06 | 0.20                         | 0.29 | 0.06 |

### SJ3000

| Port size      |                | Flow characteristics         |      |      |                              |      |      |
|----------------|----------------|------------------------------|------|------|------------------------------|------|------|
| 1(P)<br>3/5(E) | 4, 2<br>(A, B) | 1→2/4 (P→A/B)                |      |      | 4/2→3/5 (A/B→E)              |      |      |
|                |                | C [dm <sup>3</sup> /(s·bar)] | b    | Cv   | C [dm <sup>3</sup> /(s·bar)] | b    | Cv   |
| C8             | C2             | 0.13                         | 0.56 | 0.04 | 0.14                         | 0.51 | 0.04 |
|                | C4             | 0.42                         | 0.17 | 0.11 | 0.45                         | 0.16 | 0.11 |
|                | C6             | 0.55                         | 0.10 | 0.12 | 0.56                         | 0.11 | 0.12 |
|                | M5             | 0.40                         | 0.28 | 0.11 | 0.45                         | 0.15 | 0.11 |

Note) The value is for manifold base with 5 stations and individually operated 2 position type.  
Please contact SMC for 4 position dual 3 port valves.

**Non-plug-in  
Individual Wiring Manifold**

***Series SJ2000/3000***

**P.52 Individual Wiring**



## Non-plug-in Individual Wiring

# Series SJ2000/3000



### How to Order

#### ● Individual wiring manifold

SS5J **3** - **60** - **05** **U**

#### Series

|          |                            |
|----------|----------------------------|
| <b>2</b> | SJ2000                     |
| <b>3</b> | SJ3000 (SJ2000/3000 mixed) |

#### Mixed mounting type

|            |                                       |
|------------|---------------------------------------|
| <b>Nil</b> | Standard <small>Note 1)</small>       |
| <b>M</b>   | Mixed mounting <small>Note 2)</small> |

Note 1) There is no need to enter anything when you operate either the SJ2000 or SJ3000 series alone.

Note 2) Enter "M" when the SJ2000 or SJ3000 series will be mounted on the same manifold base together.

#### Valve stations

| Symbol    | Stations    |
|-----------|-------------|
| <b>02</b> | 2 stations  |
| <b> </b>  | <b> </b>    |
| <b>20</b> | 20 stations |

#### DIN rail length specified

|            |                 |   |
|------------|-----------------|---|
| <b>Nil</b> | Standard length |   |
| <b>3</b>   | 3 stations      | Specify a longer rail than the standard length. |
| <b> </b>   | <b> </b>        | <b> </b>  |
| <b>20</b>  | 20 stations     |   |

\* Specify the valve stations not exceeding the maximum stations.

#### SUP/EXH block fitting spec.

|            |   |  |
|------------|---|--|
| <b>Nil</b> | Straight fitting<br>With external pilot spec.<br>X, PE port         |  |
| <b>L</b>   | Elbow fitting (Upward)<br>With external pilot spec.<br>X, PE port   |  |
| <b>B</b>   | Elbow fitting (Downward)<br>With external pilot spec.<br>X, PE port |  |

\* There is no need to enter anything when the SUP/EXH block mounting position "M" is selected.

#### Pilot spec.

|            |                                    |
|------------|------------------------------------|
| <b>Nil</b> | Internal pilot                     |
| <b>S</b>   | Internal pilot / Built-in silencer |
| <b>R</b>   | External pilot                     |
| <b>RS</b>  | External pilot / Built-in silencer |

\* There is no need to enter anything when the SUP/EXH block mounting position "M" is selected.

\* For built-in silencers, the 3/5(E) ports are plugged.

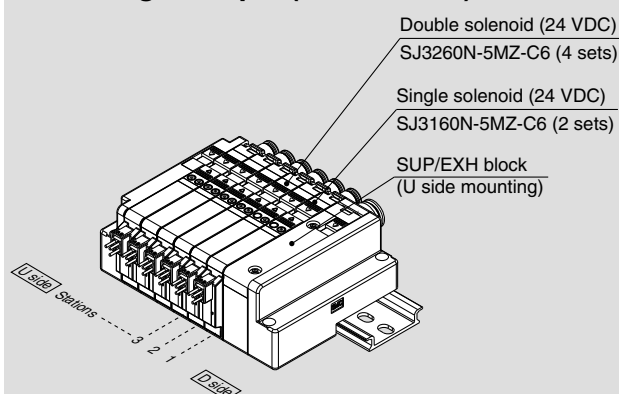
#### SUP/EXH block mounting position

|           |                               |
|-----------|-------------------------------|
| <b>U</b>  | U side (2 to 10 stations)     |
| <b>D</b>  | D side (2 to 10 stations)     |
| <b>B</b>  | Both sides (2 to 20 stations) |
| <b>M*</b> | Special specifications        |

\* Specify the required specifications (including port sizes other than ø8) by means of the manifold specification sheet.

### How to Order Valve Manifold Assembly

#### Ordering example (SS5J3-60-□)



SS5J3-60-06D ..... 1 set (Manifold part no.)  
 \* SJ3160N-5MZ-C6 ..... 2 sets (Single solenoid part no.)  
 \* SJ3260N-5MZ-C6 ..... 4 sets (Double solenoid part no.)

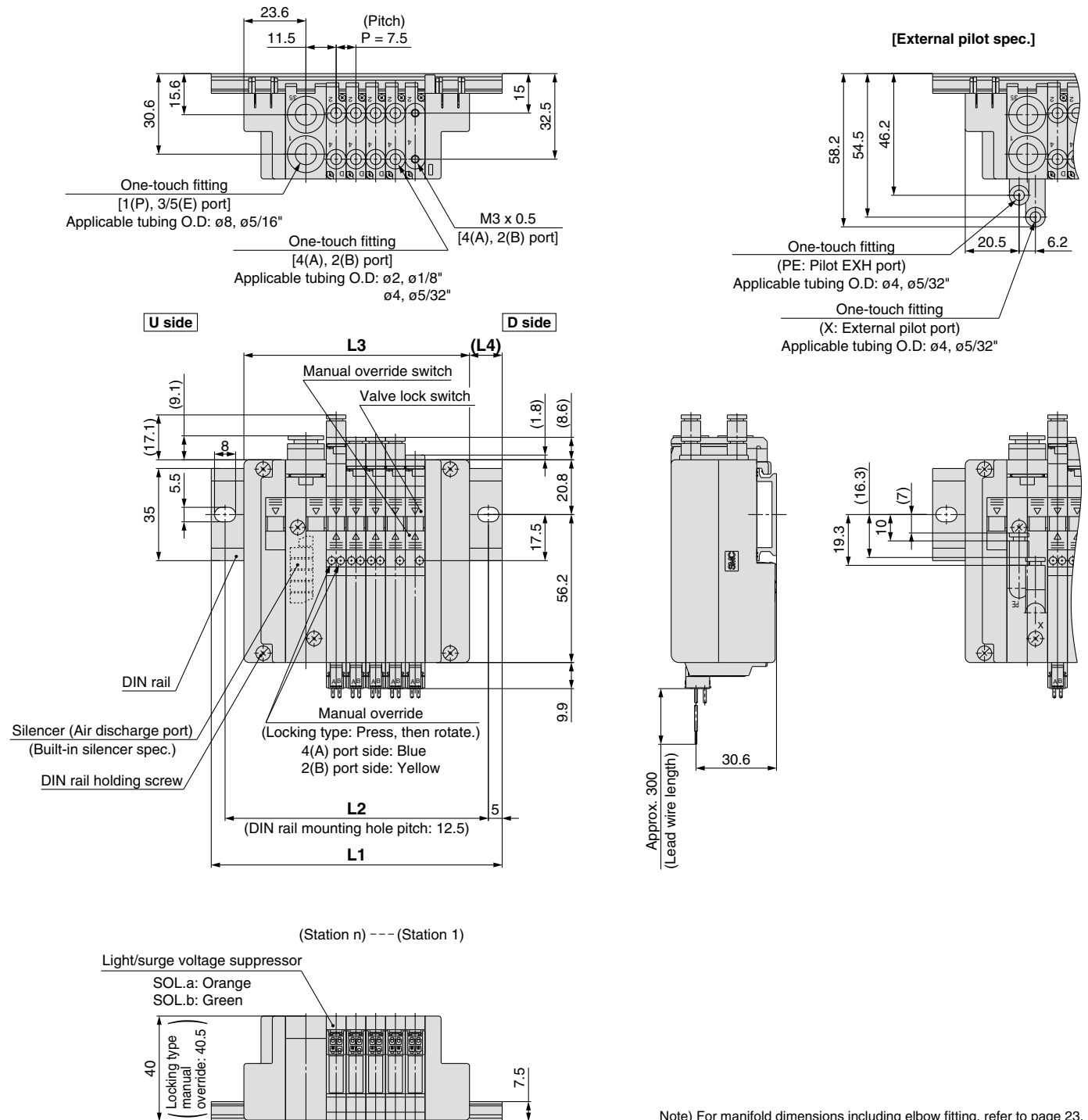
→ The asterisk denotes the symbol for assembly.  
 Prefix to the part no. of the solenoid valve, etc.

- The valve arrangement is numbered as the 1st station from D side.
- Indicate the valves to be attached below the manifold part number, in order starting from station 1 as shown in the drawing. In the case of complex arrangement, specify them in the manifold specification sheet.

# Series SJ2000/3000

## Dimensions

### SS5J2-60- Stations U (S, R, RS)



Note) For manifold dimensions including elbow fitting, refer to page 23.

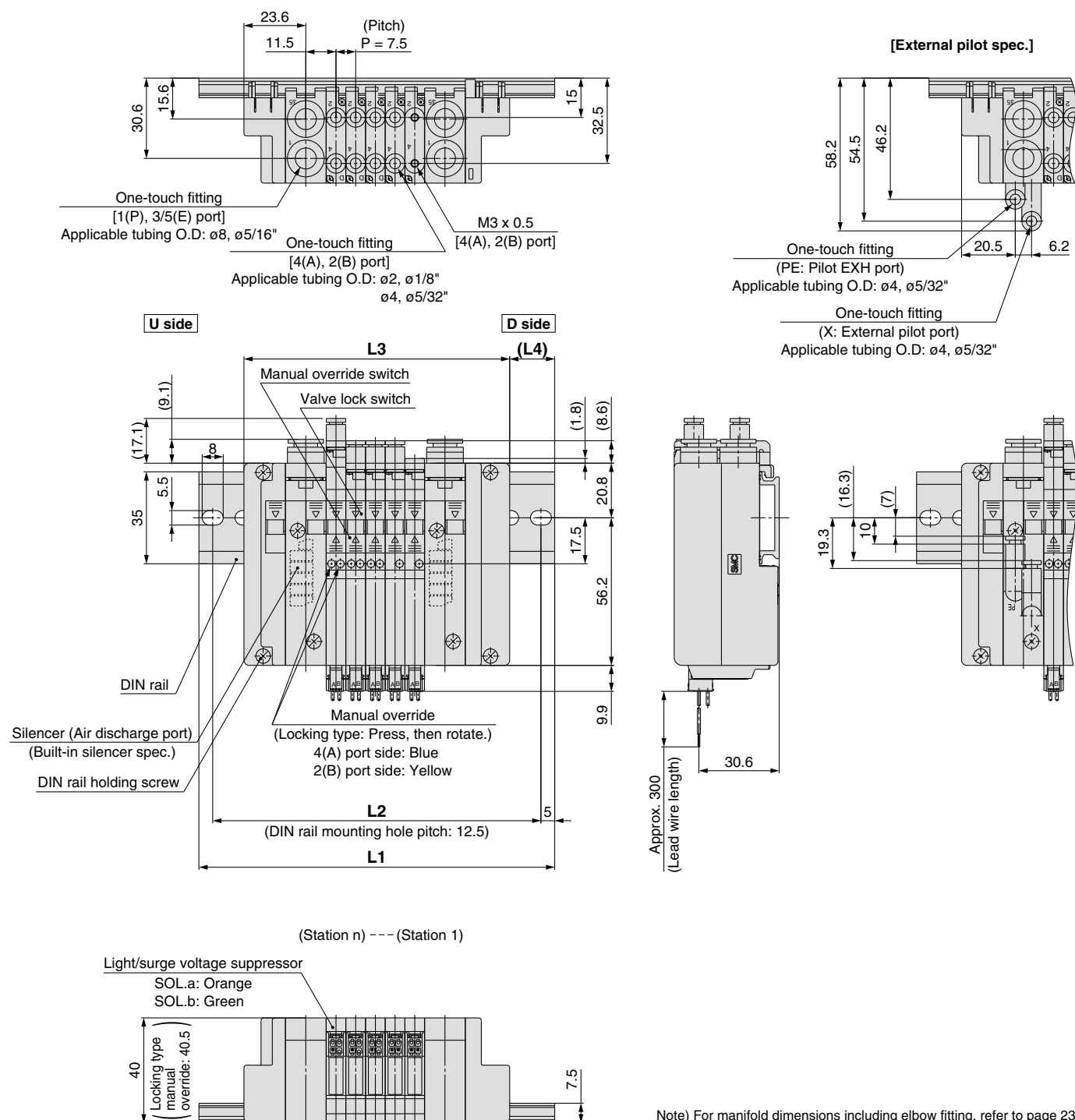
## L: Dimensions

n: Stations

| L \ n | 2    | 3    | 4     | 5     | 6     | 7     | 8     | 9     | 10    |
|-------|------|------|-------|-------|-------|-------|-------|-------|-------|
| L1    | 98   | 98   | 110.5 | 110.5 | 123   | 135.5 | 135.5 | 148   | 148   |
| L2    | 87.5 | 87.5 | 100   | 100   | 112.5 | 125   | 125   | 137.5 | 137.5 |
| L3    | 63.2 | 70.7 | 78.2  | 85.7  | 93.2  | 100.7 | 108.2 | 115.7 | 123.2 |
| L4    | 17.5 | 13.5 | 16    | 12.5  | 15    | 17.5  | 13.5  | 16    | 12.5  |

## Dimensions

### SS5J2-60- Stations B (S, R, RS)



Note) For manifold dimensions including elbow fitting, refer to page 23.

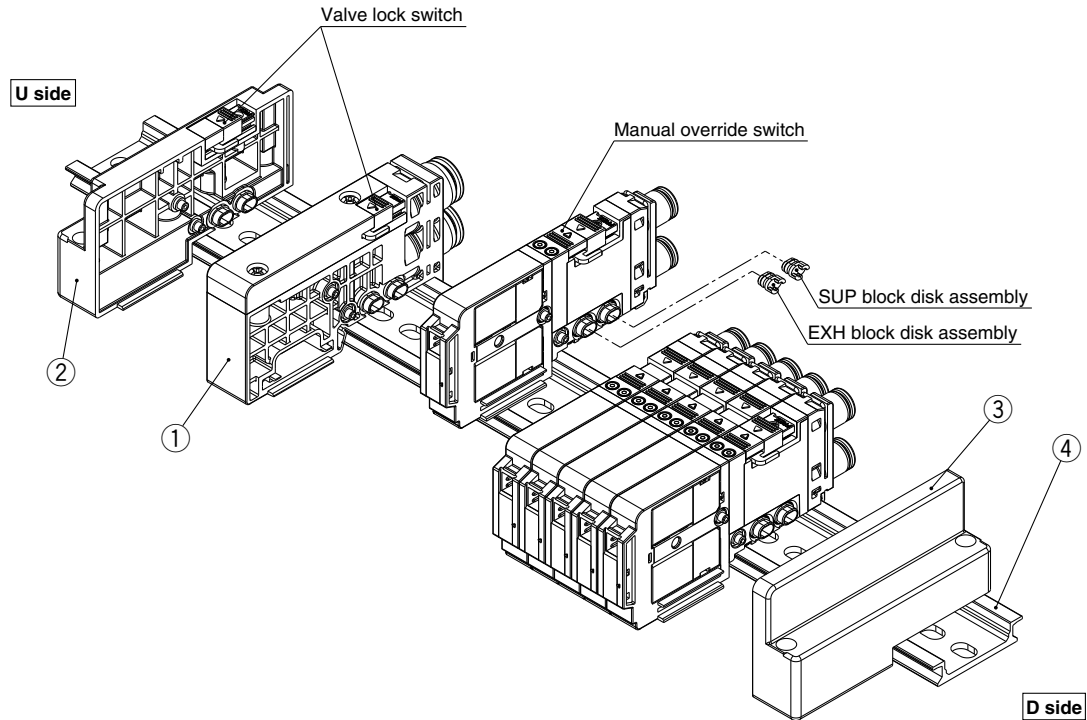
### L: Dimensions

|    |   | n: Stations |       |       |       |       |       |       |       |       |       |       |       |       |       |       |       |       |       |       |
|----|---|-------------|-------|-------|-------|-------|-------|-------|-------|-------|-------|-------|-------|-------|-------|-------|-------|-------|-------|-------|
| L  | n | 2           | 3     | 4     | 5     | 6     | 7     | 8     | 9     | 10    | 11    | 12    | 13    | 14    | 15    | 16    | 17    | 18    | 19    | 20    |
| L1 |   | 110.5       | 110.5 | 123   | 135.5 | 135.5 | 148   | 148   | 160.5 | 173   | 173   | 185.5 | 185.5 | 198   | 210.5 | 210.5 | 223   | 223   | 235.5 | 248   |
| L2 |   | 100         | 100   | 112.5 | 125   | 125   | 137.5 | 137.5 | 150   | 162.5 | 162.5 | 175   | 175   | 187.5 | 200   | 200   | 212.5 | 212.5 | 225   | 237.5 |
| L3 |   | 78.7        | 86.2  | 93.7  | 101.2 | 108.7 | 116.2 | 123.7 | 131.2 | 138.7 | 146.2 | 153.7 | 161.2 | 168.7 | 176.2 | 183.7 | 191.2 | 198.7 | 206.2 | 213.7 |
| L4 |   | 16          | 12    | 14.5  | 17    | 13.5  | 16    | 12    | 14.5  | 17    | 13.5  | 16    | 12    | 14.5  | 17    | 13.5  | 16    | 12    | 14.5  | 17    |

## Manifold Exploded View

### Type 60 (Non-plug-in) manifold

Note) Refer to page 50 for "How to Add Manifold Stations."



### Component Parts / Non-plug-in

| No. | Description            |  | Part no.   | Note  |
|-----|------------------------|--|--|---|
| 1   | SUP/EXH block assembly | Internal pilot   | SJ3000-50-5A-□□  | (Metric size)<br>C6: With ø6 one-touch fitting (straight)<br>C8: With ø8 one-touch fitting (straight)<br>L6: With ø6 one-touch fitting (elbow upward entry)<br>L8: With ø8 one-touch fitting (elbow upward entry)<br>B6: With ø6 one-touch fitting (elbow downward entry)<br>B8: With ø8 one-touch fitting (elbow downward entry) |
|     |                        | Internal pilot / Built-in silencer   | SJ3000-50-5AS-□□   |   |
|     |                        | External pilot   | SJ3000-50-5AR-□□<br>(X, PE port: Metric size ø4<br>Inch size ø5/32") |   |
|     |                        | External pilot / Built-in silencer   | SJ3000-50-5ARS-□□<br>(X port: Metric size ø4<br>Inch size ø5/32")    | (Inch size)<br>N7: With 1/4" one-touch fitting (straight)<br>N9: With 5/16" one-touch fitting (straight)  |
|     |                        | For different pressures, internal pilot <small>Note 1)</small>                       | SJ3000-50-6A-□□  |   |
|     |                        | For different pressures <small>Note 1)</small><br>Internal pilot / Built-in silencer | SJ3000-50-6AS-□□   |   |
| 2   | End block assembly     |  | SJ3000-53-1A   | For U side  |
| 3   | End block assembly     |  | SJ3000-53-2A   | For D side  |
| 4   | DIN rail               |  | VZ1000-11-1-□  | Refer to page 61.   |

Note 1) The valves cannot be operated only with the SUP/EXH block assembly for different pressure, select them in combination with the SUP/EXH block assembly for internal/ external pilot.

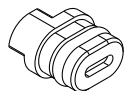
Note 2) Refer to page 60 about the SUP/EXH block disk assembly and method of handling of parts at different pressure.

# Series SJ2000/3000

## Manifold Options

### ■ SUP block disk assembly

By placing a SUP block disk in a manifold valve's pressure supply passage, two different high and low pressures can be supplied to one manifold. When supplying different pressures using the manifold of the internal pilot, fill out a manifold specification sheet to place an order for an SUP/EXH assembly for the internal pilot specifications and another SUP/EXH assembly for the different-pressure internal pilot specifications (Refer to Circuit Diagram 1).

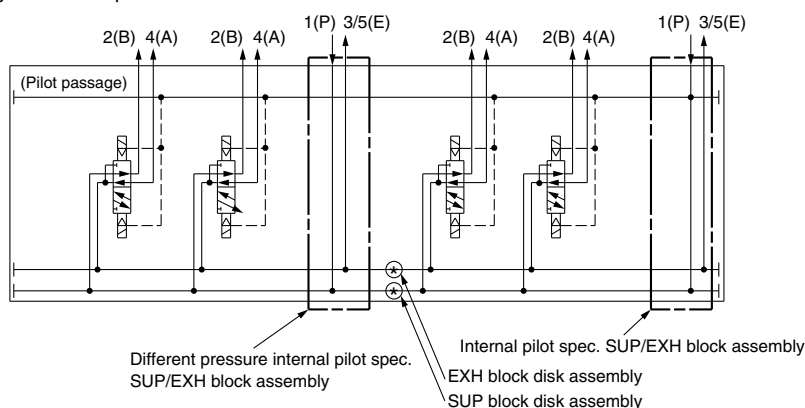


| Series | Part no.            |
|--------|---------------------|
| SJ2000 | <b>SJ3000-44-1A</b> |
| SJ3000 |                     |

### [Different pressure pneumatic circuit diagram]

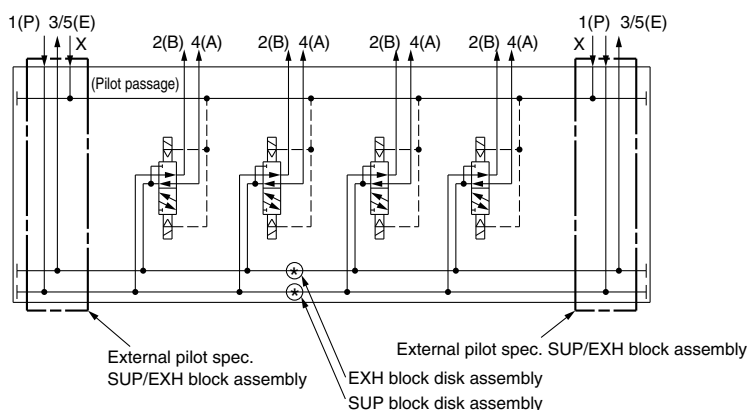
- The SJ series supplies air to the pilot port of each valve using a 1(P) port of the SUP/EXH block assembly. When using in situations such as where there are different pressures, combine SUP/EXH block assemblies for internal pilot, external pilot and different-pressure by referring to the circuit below.

#### 1. Different-pressure spec. using the internal pilot



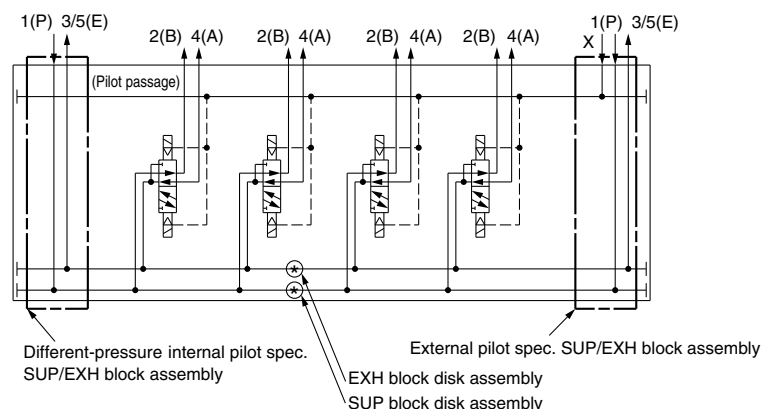
#### 2. Different-pressure spec. using the external pilot

(For using the SUP/EXH block assembly for external pilot)



#### 3. Different-pressure spec. using the external pilot

(For using the SUP/EXH block assembly for different-pressure internal pilot spec.)



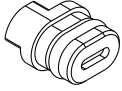
Note 1) When operating under the different-pressure spec., supply the higher pressure to the pilot passage.

Note 2) If there is a need to partition the pilot passage, consult SMC.

# 4 Port Solenoid Valve *Series SJ2000/3000*

## ■ EXH block disk assembly

By installing an EXH block disk in a manifold valve's exhaust passage, the valve's exhaust can be separated so that it will not affect other valves.



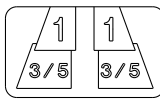
| Series | Part no.            |
|--------|---------------------|
| SJ2000 | <b>SJ3000-44-1A</b> |
| SJ3000 |                     |

## ■ Label for block disk

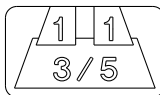
These labels are attached to manifolds in which SUP and EXH block disks have been installed, in order to identify the installed locations. (Three sheets each included.)

### SJ3000-155-1A

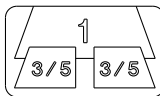
Label for  
SUP/EXH block disk



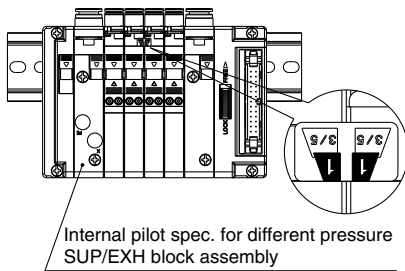
Label for  
SUP block disk



Label for  
EXH block disk

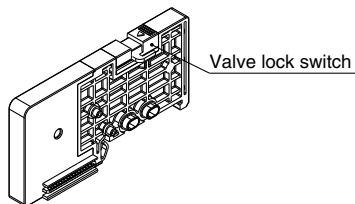


\* When a block disk is concurrently ordered by specifying on the manifold specification sheet, etc., a label will be stuck on the position where block disk is mounted.



## ■ Blanking block assembly

These are mounted when later addition of valves is planned, etc.

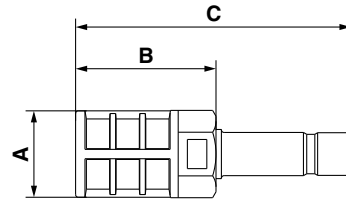


| Series | Part no.              | Note                 | Width  |
|--------|-----------------------|----------------------|--------|
| SJ2000 | <b>SJ3000-49-1A</b>   | Single wiring        | 7.5 mm |
| SJ3000 | <b>SJ3000-49-2A</b>   | Double wiring        |        |
| SJ3A6  | <b>SJ3000-49-2A-N</b> | Double wiring (Note) |        |

Note) Valve lock switch is not available for the SJ3A6.

## ■ Silencer with one-touch fitting

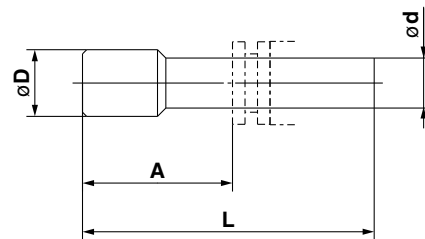
This silencer can be mounted on the manifolds' port 3/5 (E: Exhaust) with a single touch.



| Series                    | Model            | Effective area     | A   | B  | C  |
|---------------------------|------------------|--------------------|-----|----|----|
| For SJ2000<br>SJ3000 (ø8) | <b>AN203-KM8</b> | 14 mm <sup>2</sup> | ø16 | 26 | 51 |

## ■ Plug

These are inserted in unused cylinder ports and P, E ports.



## Dimensions

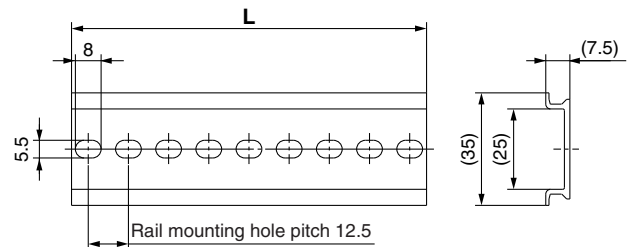
| Applicable fitting size<br>ød | Model          | A    | L    | D   |
|-------------------------------|----------------|------|------|-----|
| 2                             | <b>KJP-02</b>  | 8.2  | 17   | 3   |
| 4                             | <b>KQ2P-04</b> | 16   | 32   | 6   |
| 6                             | <b>KQ2P-06</b> | 18   | 35   | 8   |
| 8                             | <b>KQ2P-08</b> | 20.5 | 39   | 10  |
| 1/8"                          | <b>KQ2P-01</b> | 16   | 31.5 | 5   |
| 5/32"                         | <b>KQ2P-03</b> | 16   | 32   | 6   |
| 1/4"                          | <b>KQ2P-07</b> | 18   | 35   | 8.5 |
| 5/16"                         | <b>KQ2P-09</b> | 20.5 | 39   | 10  |

## ■ DIN rail

**VZ1000-11-1-**

● **L dimension**

\* Enter a number from the DIN rail dimension table shown below.



| No.         | 0    | 1     | 2    | 3     | 4    | 5     | 6    | 7     | 8    | 9     |
|-------------|------|-------|------|-------|------|-------|------|-------|------|-------|
| L dimension | 98   | 110.5 | 123  | 135.5 | 148  | 160.5 | 173  | 185.5 | 198  | 210.5 |
| Weight (g)  | 17.6 | 19.9  | 22.1 | 24.4  | 26.6 | 28.9  | 31.1 | 33.4  | 35.6 | 37.9  |

| No.         | 10   | 11    | 12   | 13    | 14   | 15    | 16   | 17    | 18   | 19    |
|-------------|------|-------|------|-------|------|-------|------|-------|------|-------|
| L dimension | 223  | 235.5 | 248  | 260.5 | 273  | 285.5 | 298  | 310.5 | 323  | 335.5 |
| Weight (g)  | 40.1 | 42.4  | 44.6 | 46.9  | 49.1 | 51.4  | 53.6 | 55.9  | 58.1 | 60.4  |

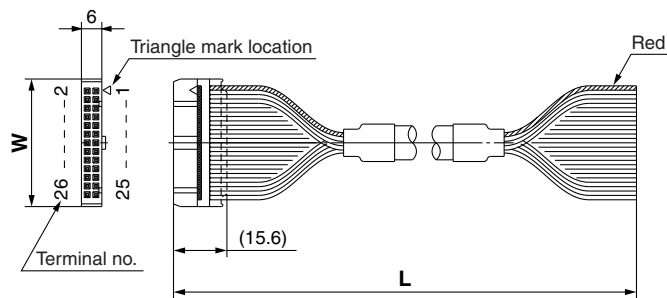
| No.         | 20   | 21    | 22   | 23    | 24   | 25    | 26   | 27    | 28   | 29    |
|-------------|------|-------|------|-------|------|-------|------|-------|------|-------|
| L dimension | 348  | 360.5 | 373  | 385.5 | 398  | 410.5 | 423  | 435.5 | 448  | 460.5 |
| Weight (g)  | 62.6 | 64.9  | 67.1 | 69.4  | 71.6 | 73.9  | 76.1 | 78.4  | 80.6 | 82.9  |



# Series SJ2000/3000

## ■ Flat ribbon cable assembly

AXT100-FC□<sup>1</sup><sub>2</sub><sup>3</sup>



### Flat Ribbon Cable Assembly

| Cable length (L)    | 10 pins       | 20 pins       | 26 pins       |
|---------------------|---------------|---------------|---------------|
| 1.5 m               | AXT100-FC10-1 | AXT100-FC20-1 | AXT100-FC26-1 |
| 3 m                 | AXT100-FC10-2 | AXT100-FC20-2 | AXT100-FC26-2 |
| 5 m                 | AXT100-FC10-3 | AXT100-FC20-3 | AXT100-FC26-3 |
| Connector width (W) | 17.2          | 30            | 37.5          |

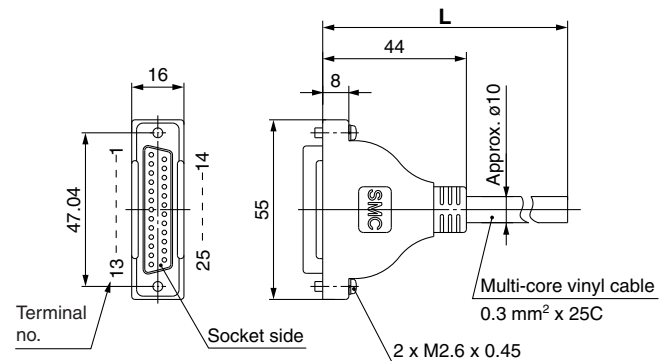
\* For other commercial connectors, use a type with strain relief that conforms to MIL-C-83503.

### Connector manufacturers:

- Hirose Electric Co., Ltd.
- Sumitomo 3M Limited
- Fujitsu Limited
- Japan Aviation Electronics Industry, Ltd.
- J.S.T. Mfg. Co., Ltd.

## ■ D-sub connector (25 pins)/Cable assembly

AXT100-DS25-<sup>015</sup><sub>030</sub><sup>050</sup>



### D-sub Connector Cable Assembly

#### Cable Color List of Each Terminal No.

| Terminal no. | Lead wire color | Dot marking |
|--------------|-----------------|-------------|
| 1            | Black           | None        |
| 2            | Brown           | None        |
| 3            | Red             | None        |
| 4            | Orange          | None        |
| 5            | Yellow          | None        |
| 6            | Pink            | None        |
| 7            | Blue            | None        |
| 8            | Purple          | White       |
| 9            | Gray            | Black       |
| 10           | White           | Black       |
| 11           | White           | Red         |
| 12           | Yellow          | Red         |
| 13           | Orange          | Red         |
| 14           | Yellow          | Black       |
| 15           | Pink            | Black       |
| 16           | Blue            | White       |
| 17           | Purple          | None        |
| 18           | Gray            | None        |
| 19           | Orange          | Black       |
| 20           | Red             | White       |
| 21           | Brown           | White       |
| 22           | Pink            | Red         |
| 23           | Gray            | Red         |
| 24           | Black           | White       |
| 25           | White           | None        |

### D-sub Connector Cable Assembly

| Cable length (L) | Assembly part no. | Note     |
|------------------|-------------------|----------|
| 1.5 m            | AXT100-DS25-015   | Cable 25 |
| 3 m              | AXT100-DS25-030   | cores x  |
| 5 m              | AXT100-DS25-050   | 24AWG    |

\* For other commercial connectors, use a 25 pins type with female connector conforming to MIL-C-24308.

### Electric Characteristics

| Item                                | Characteristics |
|-------------------------------------|-----------------|
| Conductor resistance<br>Ω/km, 20°C  | 65 or less      |
| Withstand pressure<br>V, 1 min, AC  | 1000            |
| Insulation resistance<br>MΩkm, 20°C | 5 or less       |

Note) The minimum bending radius for D-sub connector cables is 20 mm.

### Connector manufacturers:

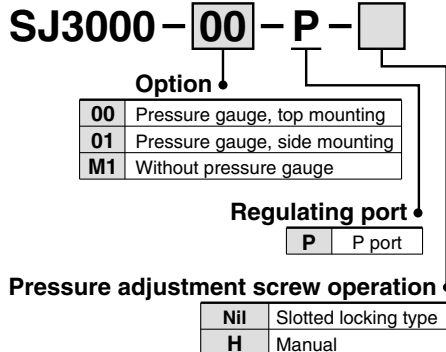
- Hirose Electric Co., Ltd.
- Fujitsu Limited
- Japan Aviation Electronics Industry, Ltd.
- J.S.T. Mfg. Co., Ltd.

# 4 Port Solenoid Valve *Series SJ2000/3000*

## ■ Regulator block

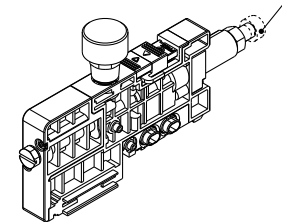
### How to Order Regulator Block

This is used to reduce the pressure supplied from the D side inside the manifold.  
All valves on the U side are depressurized from the regulator block.



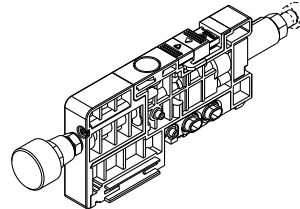
**SJ3000-00-P(-H)**

With manual operation of pressure adjustment screw



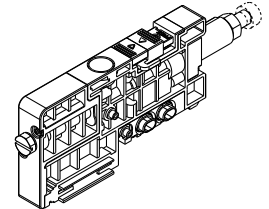
Pressure gauge, top mounting

**SJ3000-01-P(-H)**



Pressure gauge, side mounting

**SJ3000-M1-P(-H)**



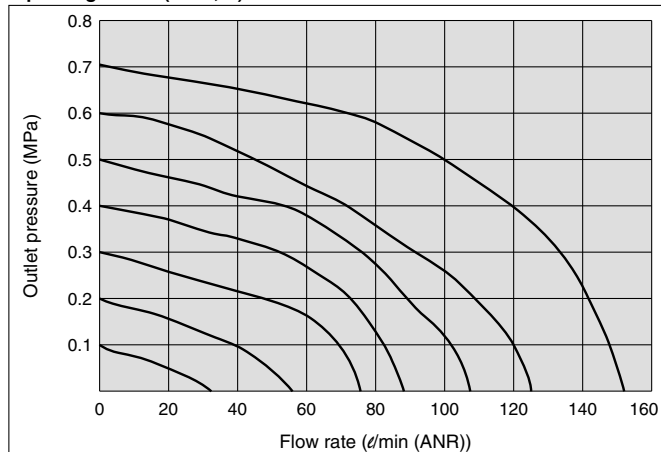
Without pressure gauge

Note) When ordering with a regulator block installed in the manifold, please order using the manifold specification sheet.

### Flow Characteristics (Conditions: Inlet pressure 0.7 MPa 2 position solenoid valve mounting)

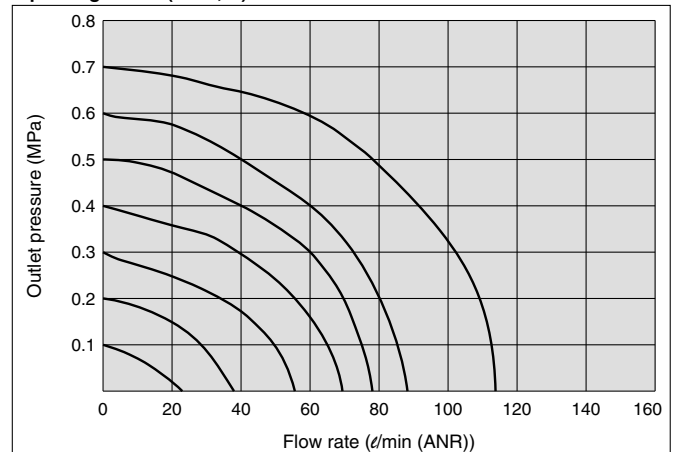
#### SJ3000

P port regulation (P→A, B)

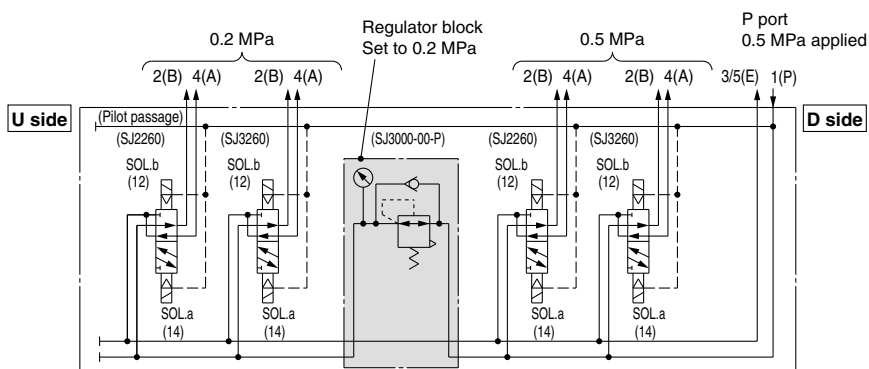


#### SJ2000

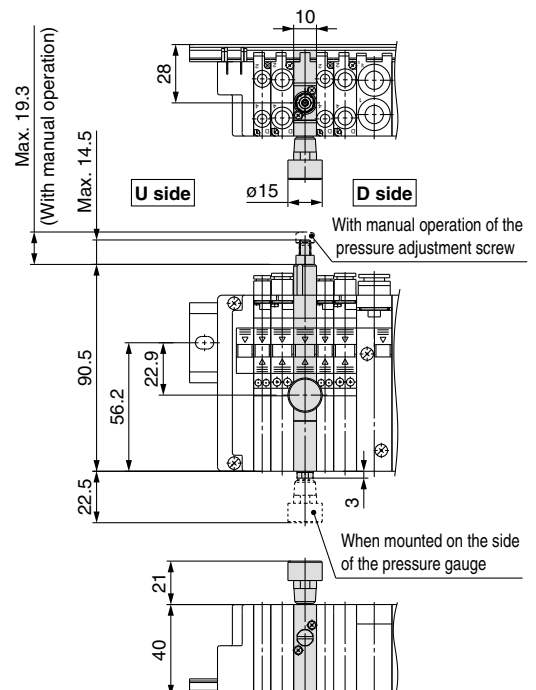
P port regulation (P→A, B)



### Pneumatic circuit (Regulator block mounting example)



Note) Reduces supply pressure from the D side of manifold.  
Supply pressure from the U side cannot be reduced.

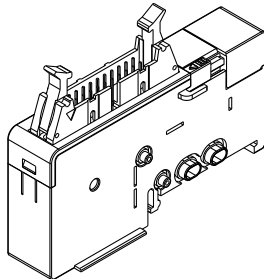


# Series SJ2000/3000

## Intermediate connector block assembly

This connector block can be used by inserting it into the middle of the manifold.

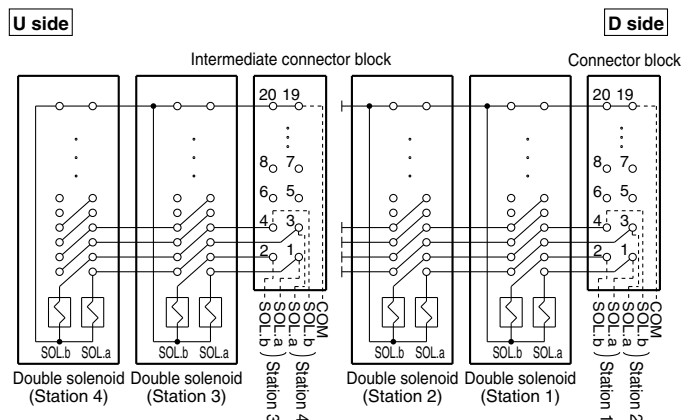
This can be used, for example, when you wish to separate electrical control of valves in the same manifold, or when the number of control points is insufficient.



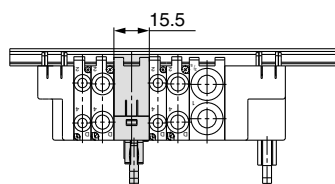
| Series | Part no.               | Note                                       |
|--------|------------------------|--|
| SJ2000 | <b>SJ3000-76-1A</b>    |  |
| SJ3000 | <b>SJ3000-76-2A-05</b> | With power supply terminal (for PC wiring) |

Note) When ordering with an intermediate connector block assembly installed in the manifold, please order using the manifold specification sheet.

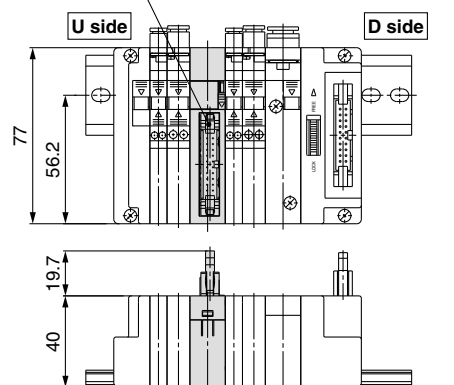
## Intermediate connector block assembly wiring example



\* Enables control of U side solenoid valves from the position where the intermediate connector block assembly is installed.



Applicable connector: 20 pin MIL type  
with strain relief  
(MIL-C-83503 compliant)



## Dual flow fitting (Set for SJ3000 series)

SJ3000-120-1A-C8

Port size

|    |        |
|----|--------|
| C8 | ø8     |
| N9 | ø5/16" |

This is a fitting for cylinder ports which enables simultaneous actuation and increase in flow rate of valves for 2 stations. This is a one-touch fitting with port sizes of ø8 and ø5/16".

\* When arranging mounted to the valve, arrange the valve part no. using the part no. without the one-touch fitting, and then add the part no. for the dual flow fitting. If the arrangement is complicated, please specify them by means of the manifold specification sheet.

## Example) Valve type (without one-touch fitting)

SJ3160-5CU-CO ..... 2 sets

\* SJ3000-120-1A-C8 ..... 1 set

