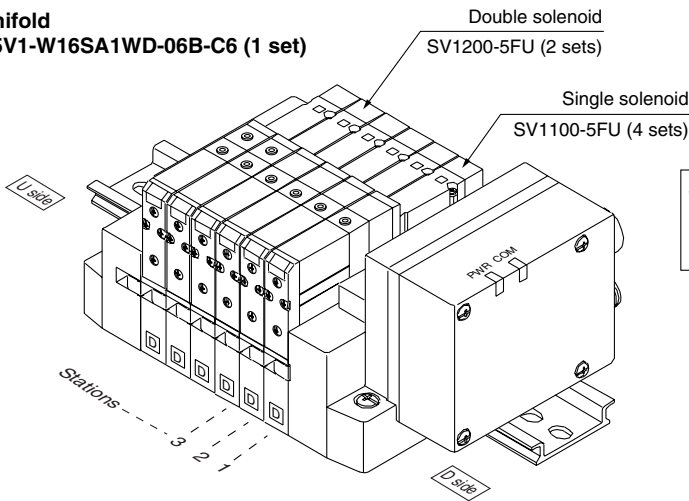


How to Order Valve Manifold Assembly

Ordering example (SV1000)

Manifold

SS5V1-W16SA1WD-06B-C6 (1 set)



SS5V1-W16SA1WD-06B-C6.....1 set (Manifold part no.)
 *SV1100-5FU.....4 sets (Single solenoid part no.)
 *SV1200-5FU.....2 sets (Double solenoid part no.)

SV

SZ

SY

SYJ

SX

How to Order Solenoid Valves

SV 1 1 0 0 [] [] — 5 F [] [] []

Series

1	SV1000
2	SV2000
3	SV3000
4	SV4000

Type of actuation

1	2 position single solenoid
2	2 position double solenoid
3	3 position closed center
4	3 position exhaust center
5	3 position pressure center
A	4 position dual 3 port valve: N.C./N.C.
B	4 position dual 3 port valve: N.O./N.O.
C	4 position dual 3 port valve: N.C./N.O.

* 4 position dual 3 port valves are applicable to Series SV1000 and SV2000 only.

Pilot type

Nil	Internal pilot
R	External pilot

* External pilot specifications is not available for 4 position dual 3 port valves.

Back pressure check valve

Nil	None
K	Built-in

* Built-in back pressure check valve type is applicable to series SV1000 only.

* Back pressure check valve is not available for 3 position closed center and 3 position pressure

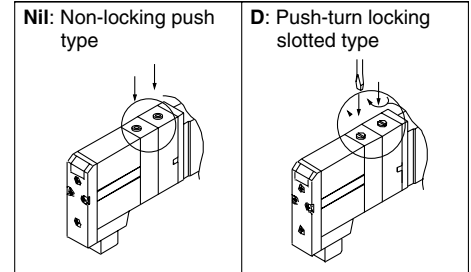
Refer to Precautions 2 on page 1-2-9.

Note)



Note) Available with manifold block for station additions. Refer to pages 1-2-89 and 1-2-93.

Manual override



Light/Surge voltage suppressor

U	With light/surge voltage suppressor
R	With surge voltage suppressor

Rated voltage

5	24 VDC
---	--------

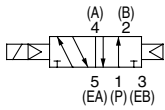
Series SV Solenoid Valve Specifications



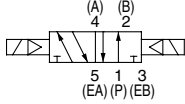
Made to Order Specifications
(For details, refer to page 1-2-108.)

JIS Symbol

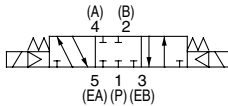
2 position single solenoid



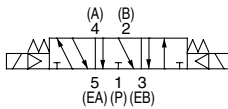
2 position double solenoid



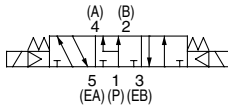
3 position closed center



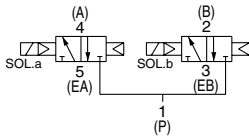
3 position exhaust center



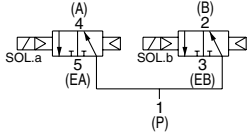
3 position pressure center



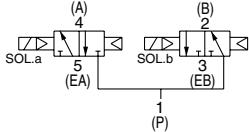
4 position dual 3 port valve: N.C./N.C.



4 position dual 3 port valve: N.O./N.O.



4 position dual 3 port valve: N.C./N.O.



Fluid	Air		
Internal pilot Operating pressure range (MPa)	2 position single	0.15 to 0.7	
	4 position dual 3 port valve	0.1 to 0.7	
	3 position	0.2 to 0.7	
External pilot Operating pressure range (MPa)	Operating pressure range	-100 kPa to 0.7	
	2 position single, double	0.25 to 0.7	
	3 position		
Ambient and fluid temperature (°C)	-10 to 50 (No freezing. Refer to page 1-7-4.)		
Max. operating frequency (Hz)	2 position single, double	5	
	4 position dual 3 port valve	3	
	3 position		
Manual override	Non-locking push type		
	Push-turn locking slotted type		
Pilot exhaust method	Internal pilot	Common exhaust type for main and pilot valve	
	External pilot	Pilot valve individual exhaust	
Lubrication	Not required		
Mounting orientation	Unrestricted		
Impact/Vibration resistance (ms ²)	150/30		
Enclosure	IP67 (Based on IEC529)		
Coil rated voltage	24 VDC, 12 VDC		
Allowable voltage fluctuation	±10% of rated voltage		
Power consumption	0.6 (With indicator light: 0.65)		
Surge voltage suppressor	Zener diode		
Indicator light	LED		

SV

SZ

SY

SYJ

SX



Note) Impact resistance: No malfunction occurred when it is tested with a drop tester in the axial direction and at the right angles to the main valve and armature in both energized and de-energized states every once for each condition. (Values at the initial period)

Vibration resistance: No malfunction occurred in a one-sweep test between 45 and 2000 Hz. Test was performed at both energized and de-energized states in the axial direction and at the right angles to the main valve and armature. (Values at the initial period)

Response Time

Type of actuation	Response time (ms) (at the pressure of 0.5 MPa)			
	SV1000	SV2000	SV3000	SV4000
2 position single	11 or less	25 or less	28 or less	40 or less
2 position double	10 or less	17 or less	26 or less	40 or less
3 position	18 or less	29 or less	32 or less	82 or less
4 position dual 3 port valve	15 or less	33 or less	—	—



Note) Based on dynamic performance test, JIS B 8375-1981.
(Coil temperature: 20°C, at rated voltage)

Weight

Series	Type of actuation	Weight (g)
SV1000	Single solenoid	66
	Double solenoid	71
	3 position	73
	4 position dual 3 port	71
SV2000	Single solenoid	74
	Double solenoid	78
	3 position	83
	4 position dual 3 port	78
SV3000	Single solenoid	99
	Double solenoid	102
	3 position	110
SV4000	Single solenoid	186
	Double solenoid	190
	3 position	211



Note) Weight of solenoid valve only.